



Canon Powershot SX500 IS Lens Replacement

Replacing the lens will fix any scratches on the lens or cracks on the lens.

Written By: Jody Wilkerson



INTRODUCTION

User will need spudger, plastic pry tools, and PH00 screwdriver.



TOOLS:

- [Phillips #00 Screwdriver](#) (1)
 - [iFixit Opening Tools](#) (1)
 - [Spudger](#) (1)
-

Step 1 — Battery



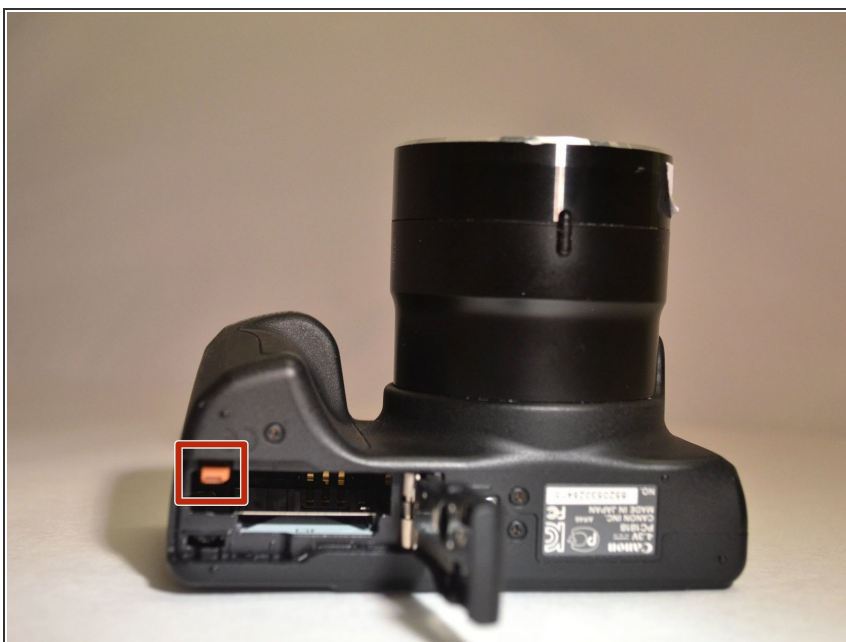
- Rotate the camera to expose the underside of the camera.

Step 2



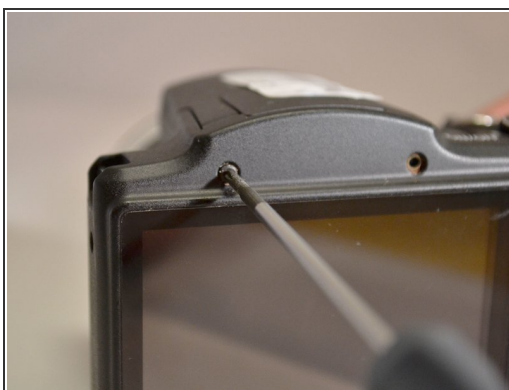
- Slide the rounded rectangle tab to the left to release the battery cover.

Step 3



- Push the small orange tab forward to release the battery (Battery is ready for removal).

Step 4 — Back Cover



- Using the Phillips 00 screwdriver, remove the two 4mm top screws above the LCD screen.

Step 5



- Using the Phillips 00 screwdriver, remove the two 4mm side screws to the left of the LCD screen.

Step 6



- Using the Phillips 00 screwdriver, remove the two 4mm side screws to the left of the LCD screen.

Step 7



- Using the Phillips 00 screwdriver, remove the three 4mm screws from the underside of the camera.

Step 8



- Using the plastic pry tool, remove the back cover from camera.

Step 9 — LCD Screen



- Using spudger, lift the tab on the connector and remove the orange ribbon from motherboard (LCD screen is separated from camera).

Step 10 — Lens



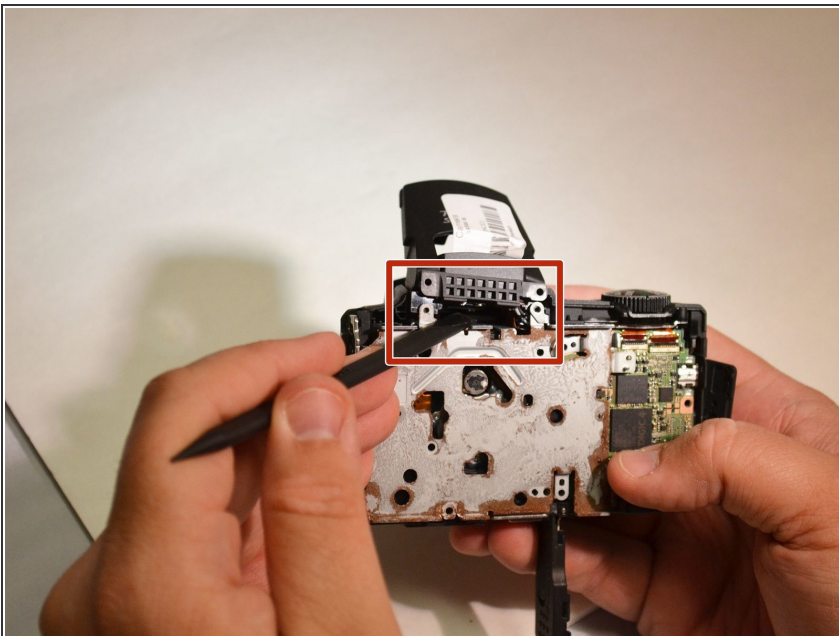
- Using the Phillips 00 screwdriver remove the seven 6mm screws from the housing plate of the LCD screen.

Step 11



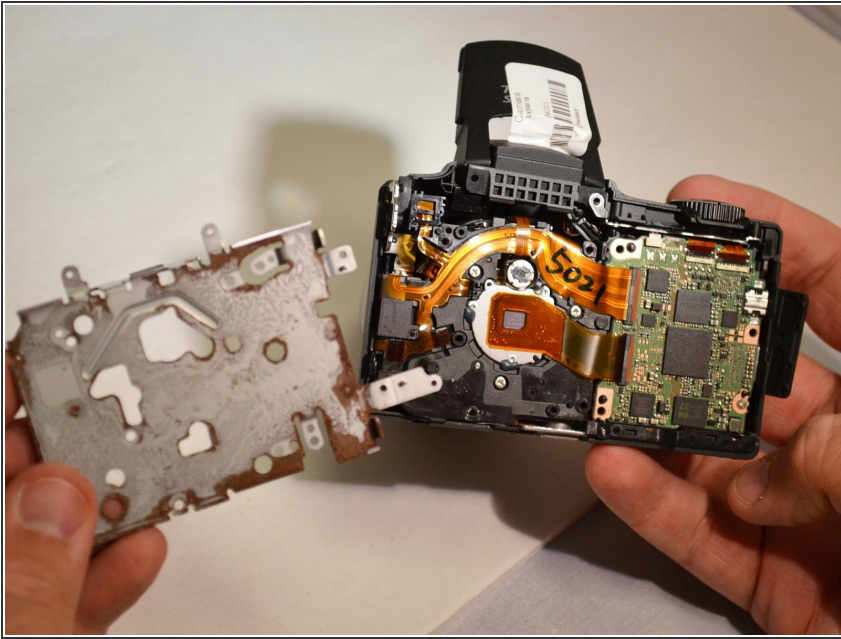
- Using the Phillips 00 screwdriver, remove the 4mm mounting screw from underneath the flash.

Step 12



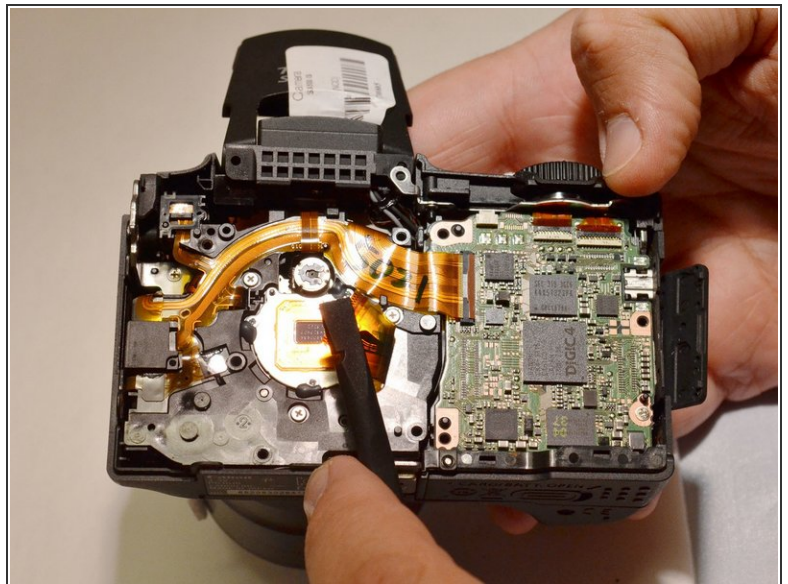
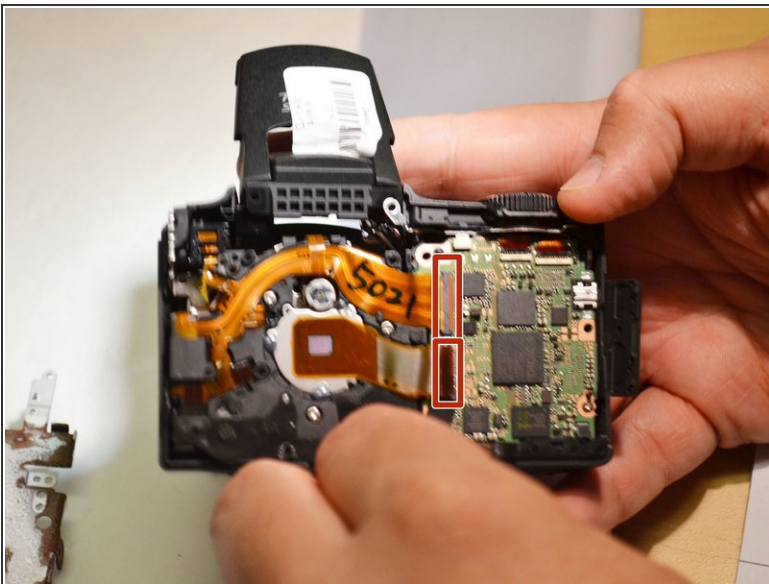
- Using the spudger, lift the flash unit away from the metal housing (Flash is lifted to allow more room for metal housing).

Step 13



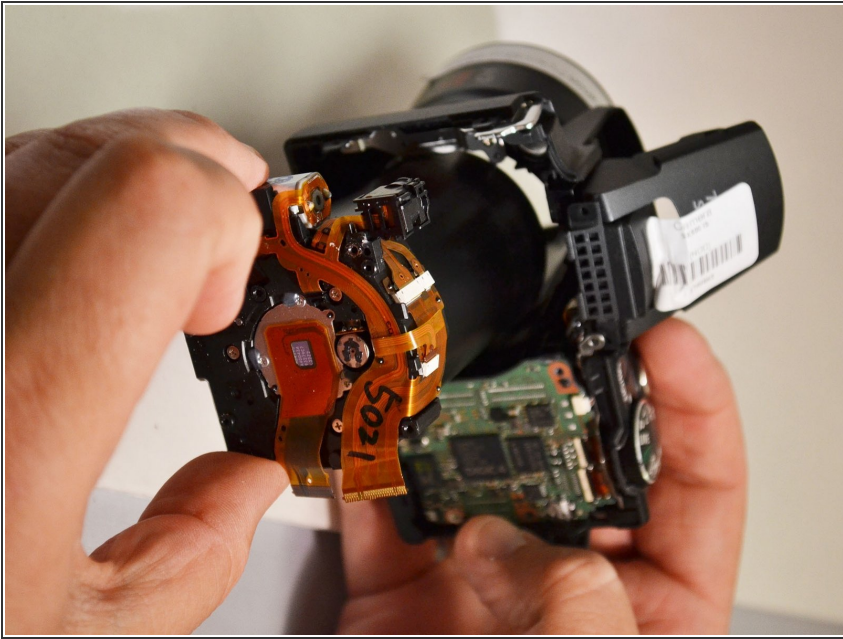
- Using the spudger, remove the metal housing (Metal housing is removed from camera).

Step 14



- Using the spudger, lift the tab on the ZIF connector and remove both orange ribbons connected to the green motherboard (Motherboard is lifted from camera).

Step 15



- Remove the lens from the lens shaft (Lens is removed from camera).

To reassemble your device, follow these instructions in reverse order.