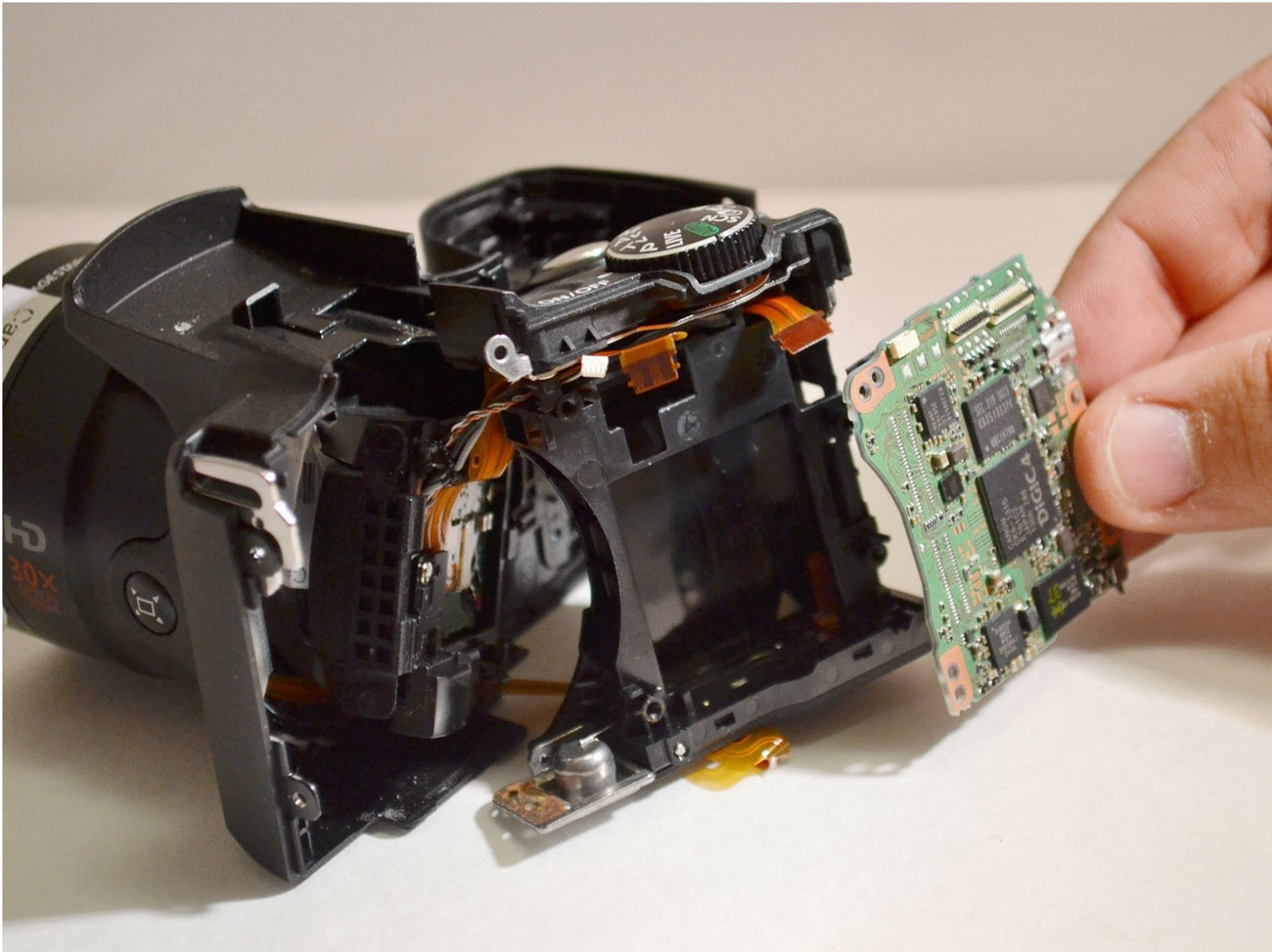




# Canon Powershot SX500 IS Motherboard Replacement

The motherboard replacement will fix any internal processing issues.

Written By: Jody Wilkerson



---

## INTRODUCTION

User will need spudger, plastic pry tool, and PH00 screwdriver.



### TOOLS:

- [Phillips #00 Screwdriver](#) (1)
  - [iFixit Opening Tools](#) (1)
  - [Spudger](#) (1)
-

## Step 1 — Battery



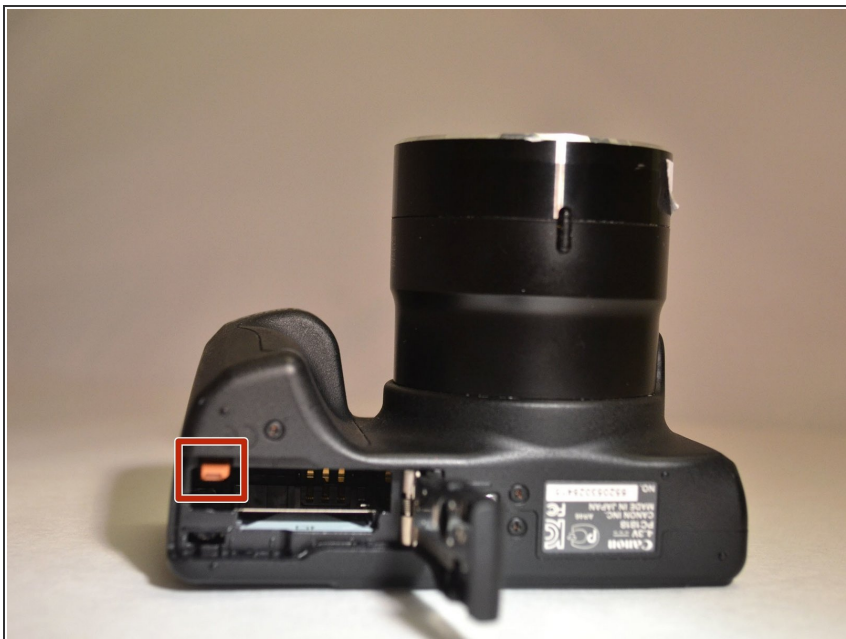
- Rotate the camera to expose the underside of the camera.

## Step 2



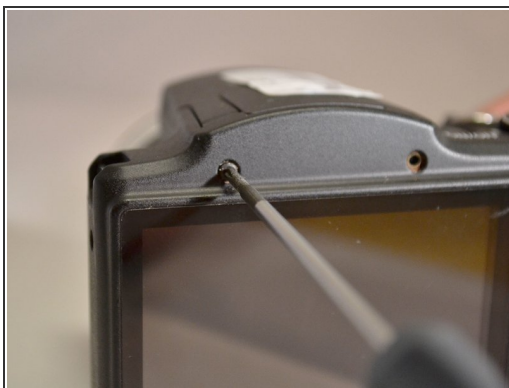
- Slide the rounded rectangle tab to the left to release the battery cover.

### Step 3



- Push the small orange tab forward to release the battery (Battery is ready for removal).

### Step 4 — Back Cover



- Using the Phillips 00 screwdriver, remove the two 4mm top screws above the LCD screen.

## Step 5



- Using the Phillips 00 screwdriver, remove the two 4mm side screws to the left of the LCD screen.

## Step 6



- Using the Phillips 00 screwdriver, remove the two 4mm side screws to the left of the LCD screen.

## Step 7



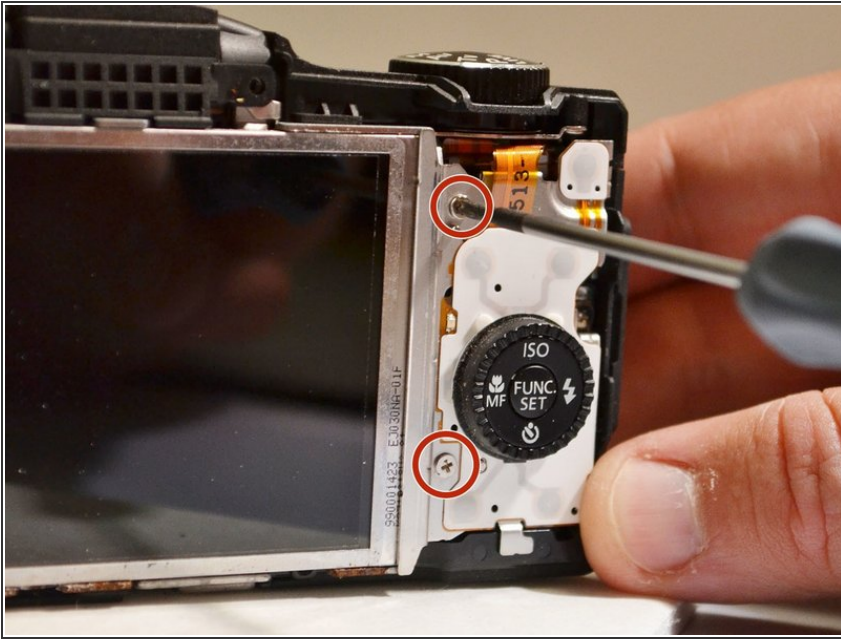
- Using the Phillips 00 screwdriver, remove the three 4mm screws from the underside of the camera.

## Step 8



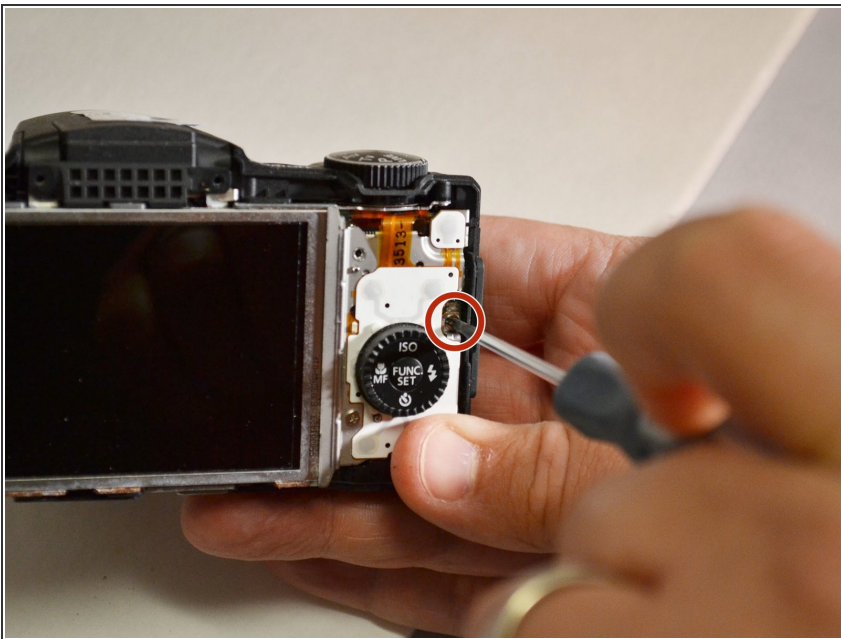
- Using the plastic pry tool, remove the back cover from camera.

## Step 9 — Control Dial



- Using the Phillips 00 screwdriver, remove the two 3mm screws closest to the right of the LCD screen.

## Step 10



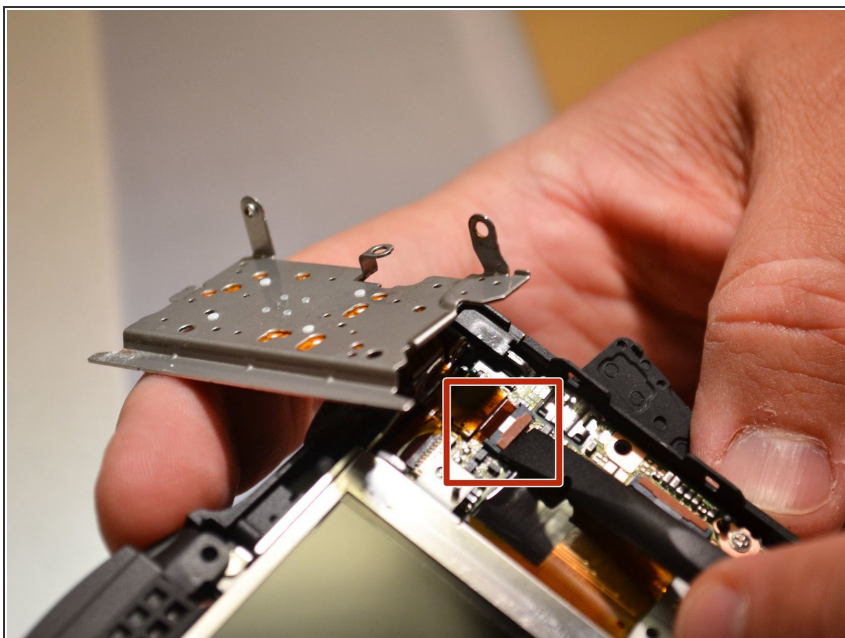
- Using the Phillips 00 screwdriver, remove the 4mm screw to the right of the control dial.

## Step 11



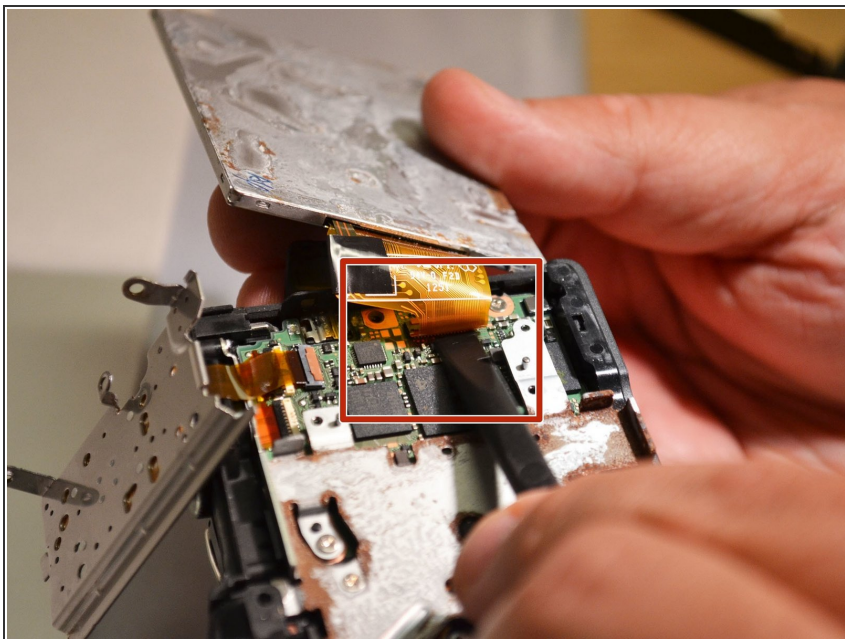
- Using the spudger, lift the control dial to the right of the LCD screen.

## Step 12



- Using the spudger, lift the connection tab and remove the control dial's orange ribbon from motherboard.

## Step 13 — LCD Screen



- Using spudger, lift the tab on the connector and remove the orange ribbon from motherboard (LCD screen is separated from camera).

## Step 14 — Lens



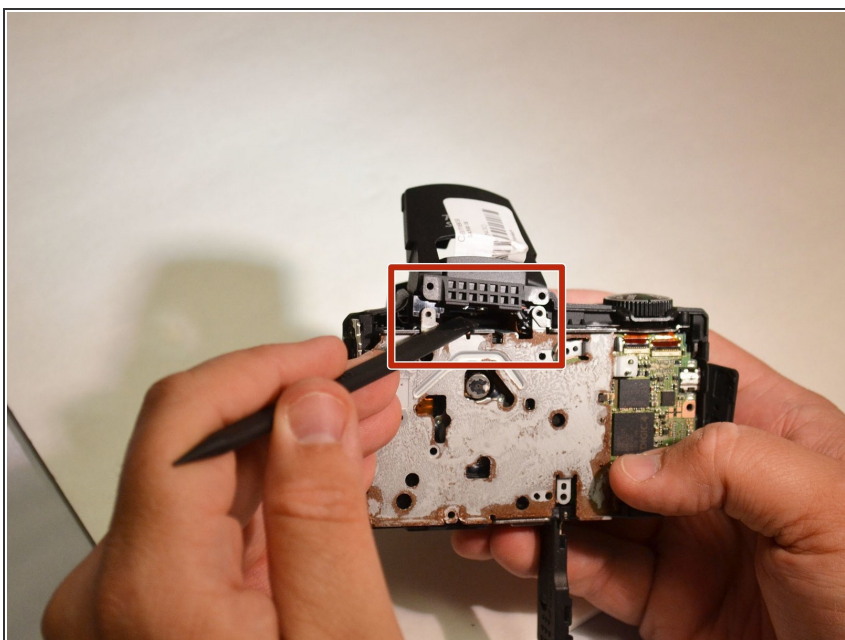
- Using the Phillips 00 screwdriver remove the seven 6mm screws from the housing plate of the LCD screen.

## Step 15



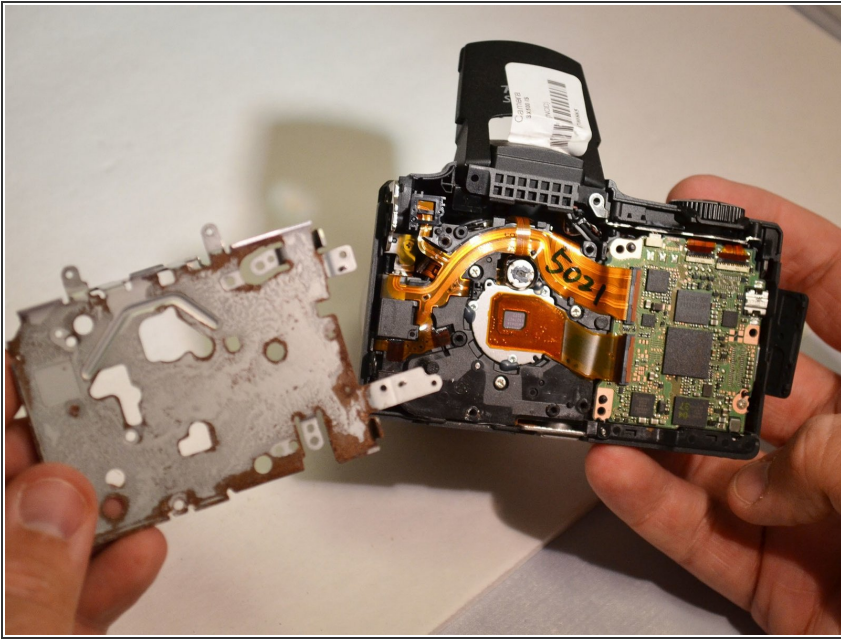
- Using the Phillips 00 screwdriver, remove the 4mm mounting screw from underneath the flash.

## Step 16



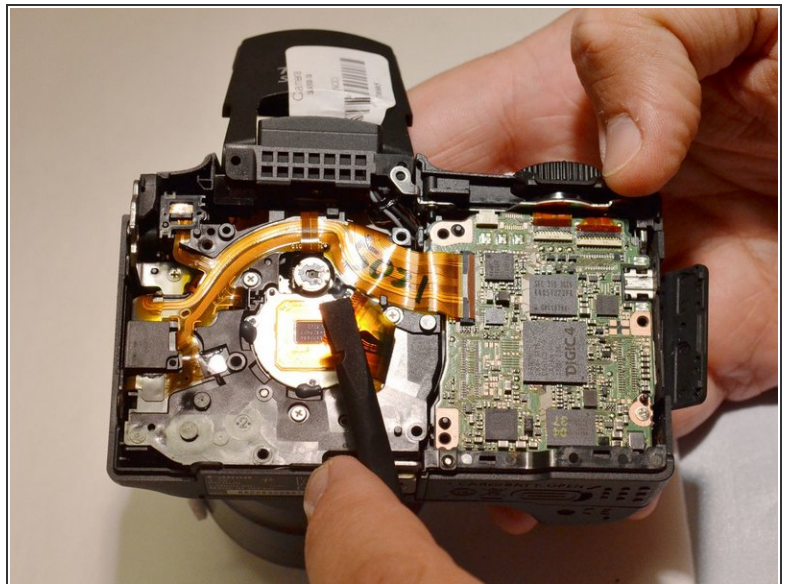
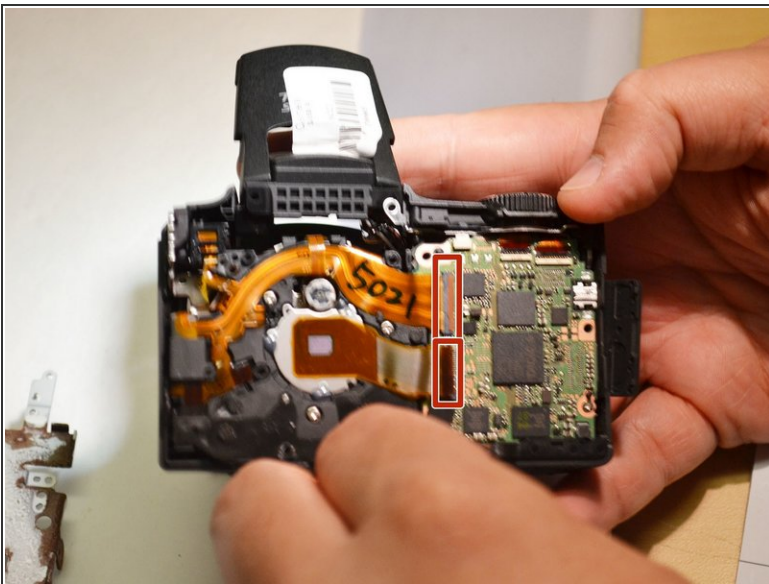
- Using the spudger, lift the flash unit away from the metal housing (Flash is lifted to allow more room for metal housing).

## Step 17



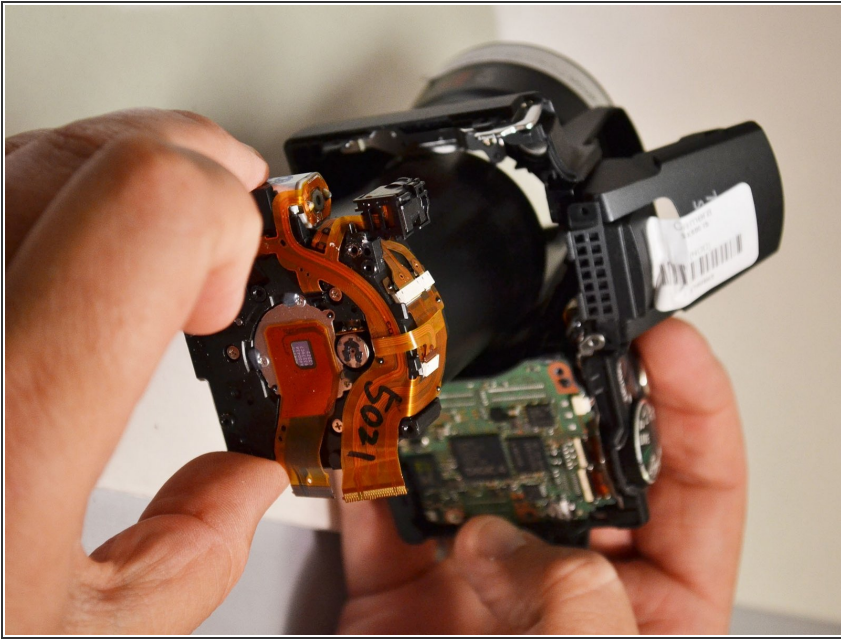
- Using the spudger, remove the metal housing (Metal housing is removed from camera).

## Step 18



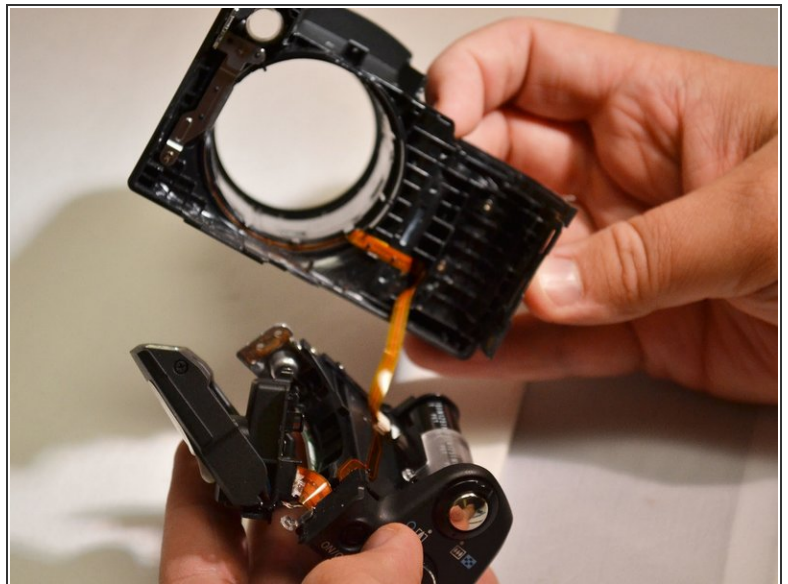
- Using the spudger, lift the tab on the ZIF connector and remove both orange ribbons connected to the green motherboard (Motherboard is lifted from camera).

## Step 19



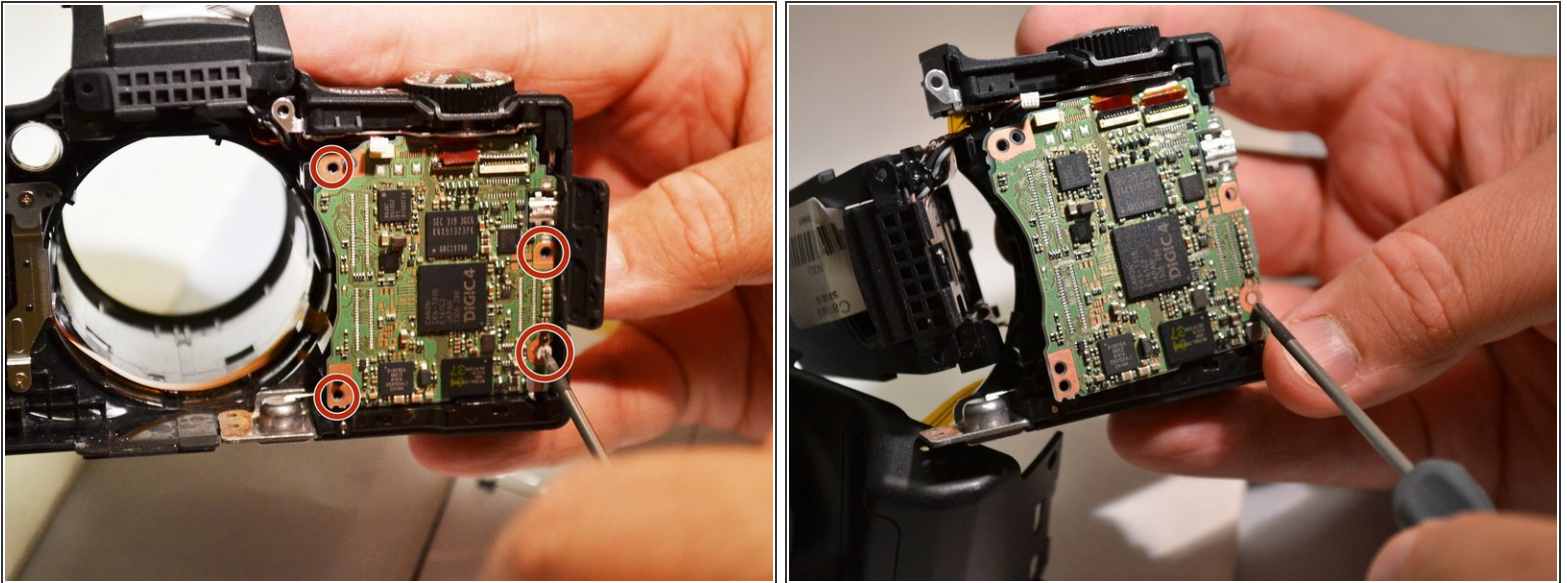
- Remove the lens from the lens shaft (Lens is removed from camera).

## Step 20 — Motherboard



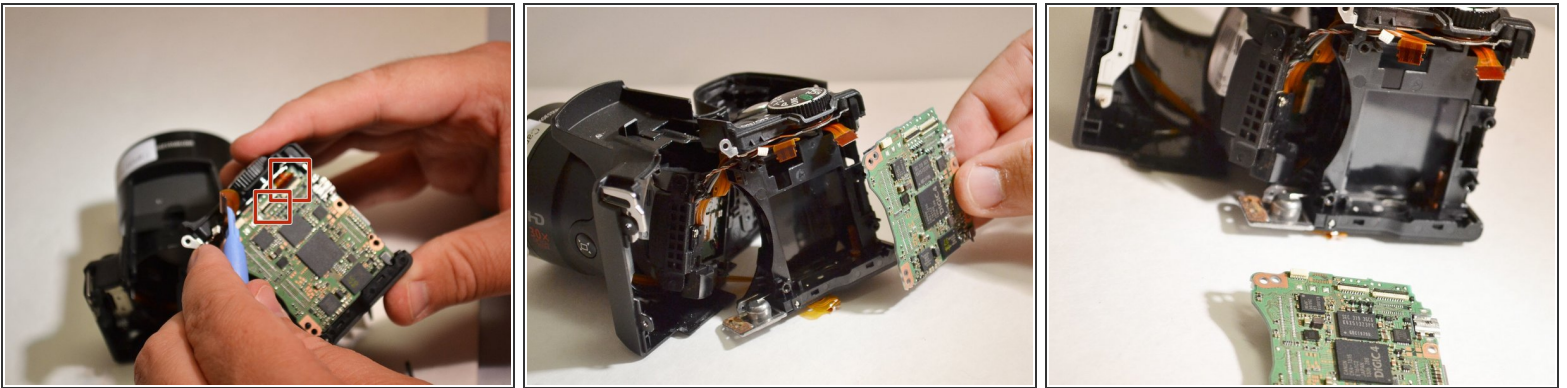
- Using the plastic pry tool, remove the motherboard and the flash unit from camera frame (Motherboard and flash unit are separated from camera).

## Step 21



- Using the Phillips 00 screwdriver, remove the 4mm screw from motherboard.

## Step 22



- Using the plastic opening tool, lift the tab on the connector and remove the two remaining orange ribbons from green motherboard (Motherboard is removed).

To reassemble your device, follow these instructions in reverse order.