



# Canon Rebel EOS SL1 PCB Replacemnent

In this guide we shall replace the main PCB on Canon's Rebel EOS SL1 Camera.

Written By: ivanram

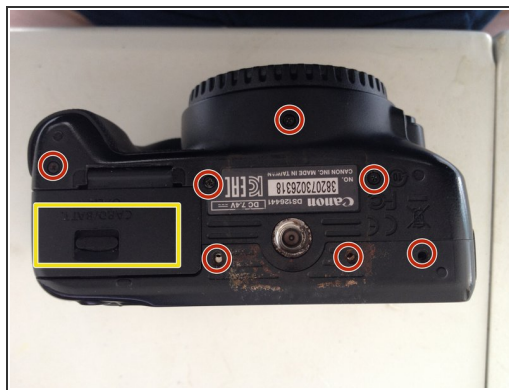


## Step 1 — Start



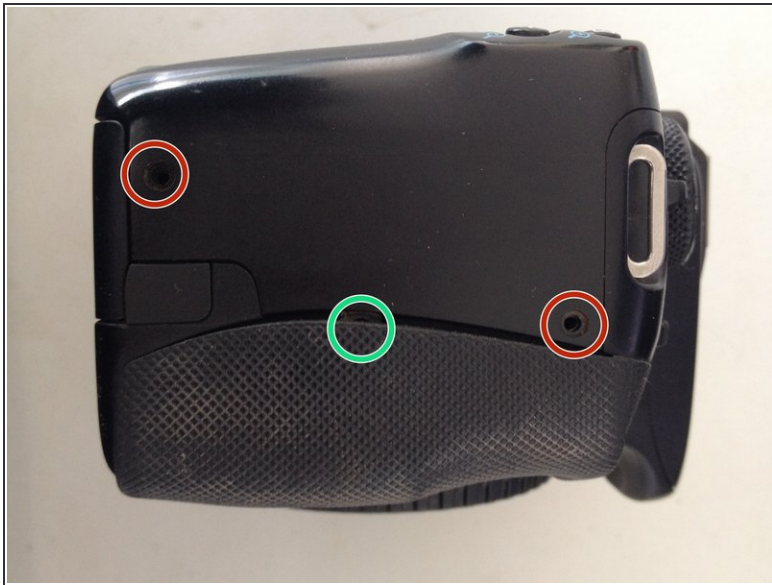
- To start the disassembly, you'll need your ESD-Safe tweezers, precision screwdriver and your anti-static band or gloves.

## Step 2



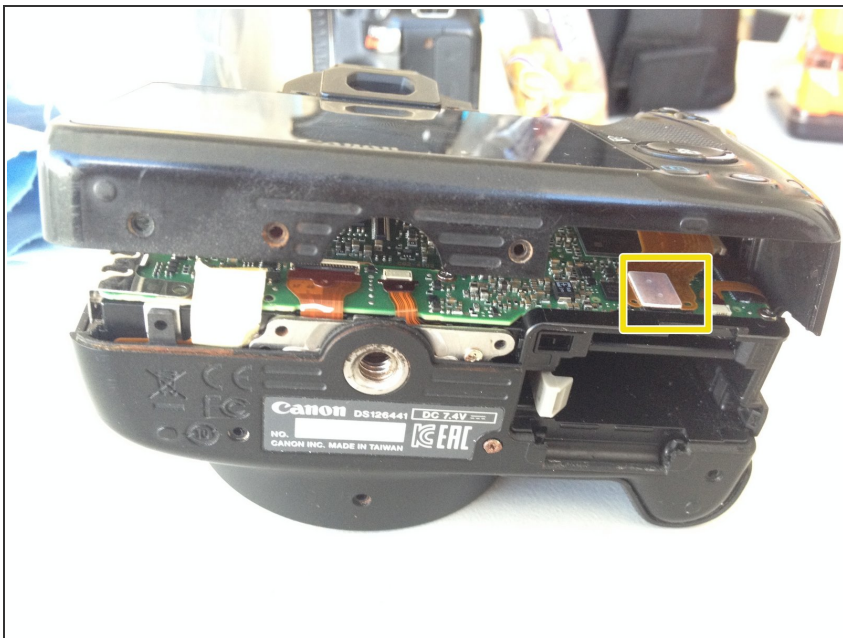
- Remove all of the screws that are circled in red. Take care to not damage them.

## Step 3



- After you have removed all of the encircled screws, carefully remove the back frame and LCD. Take care to not damage the attached flex cable.

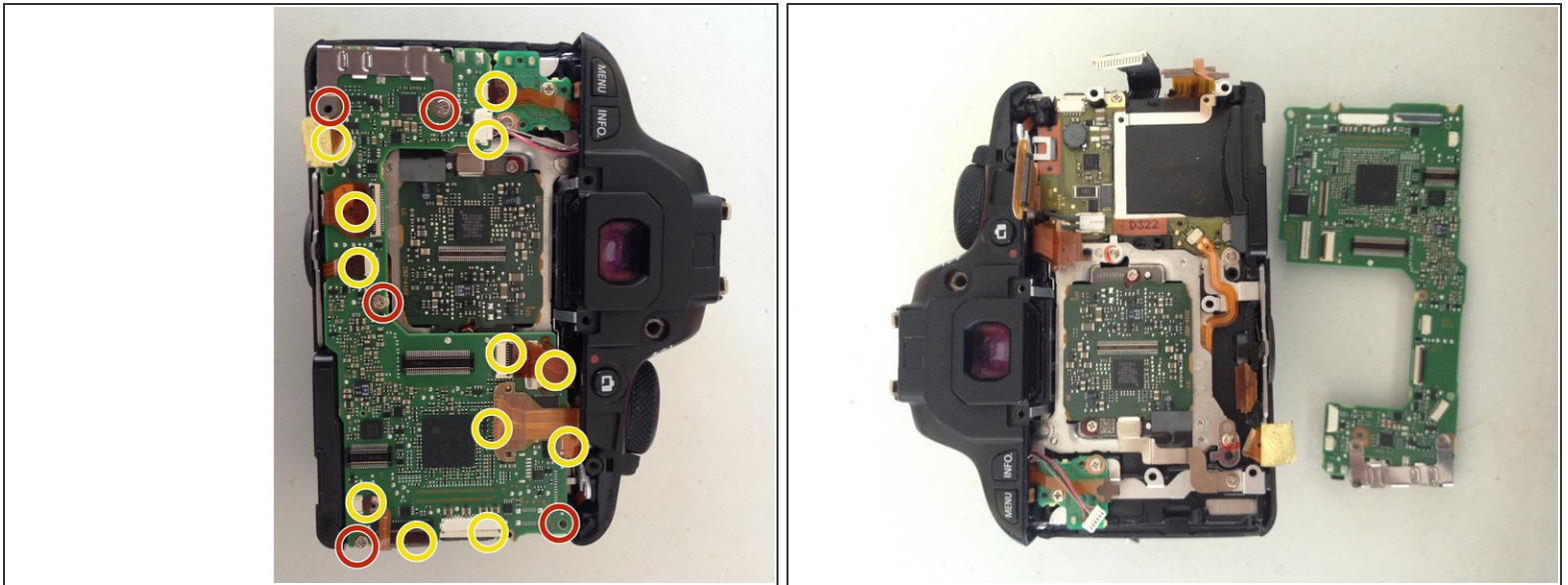
## Step 4



- With the help of your tweezers, carefully unclip the flex holding the LCD and back frame in place.



## Step 5



- Unclip all of the flex connectors and unscrew all the screws (yellow) holding the main PCB in place.
- Then unscrew the screws (red) holding the PCB onto the frame.

To reassemble your device, follow the above steps in reverse.