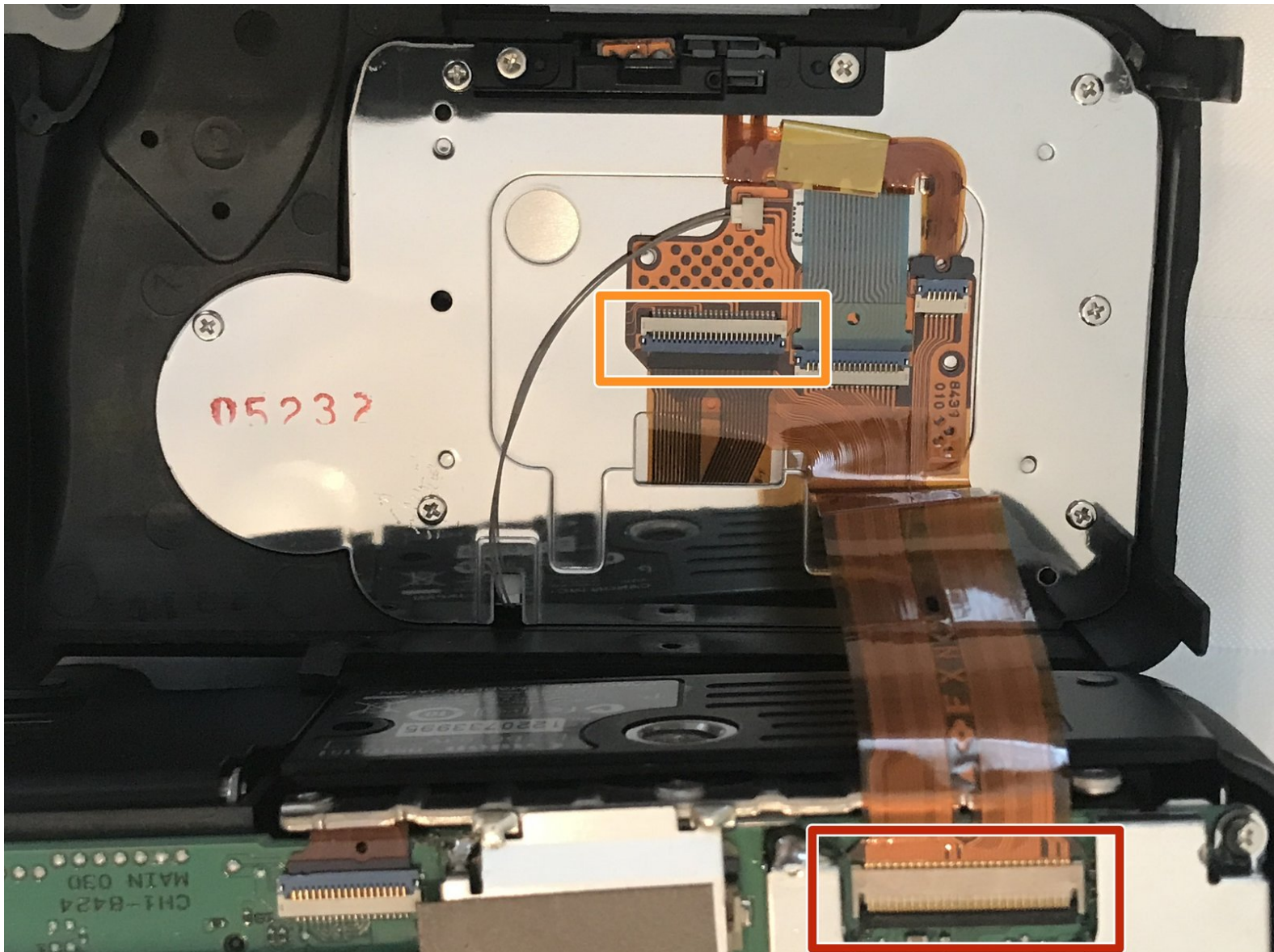




# Canon Rebel EOS XTi DSLR Camera LCD Screen Replacement Replacement

How to replace the LCD screen in a Canon EOS Rebel DSLR camera, XTi / 400D.

Written By: paynewilliam







## TOOLS:

- [iFixit Opening Tools](#) (1)
  - [64 Bit Driver Kit](#) (1)
  - [Spudger](#) (1)
-



## Step 1 — Battery



- Place the camera upside down, and position it to where the back of the camera is visible.

## Step 2



- Pull the orange tab to the right to release the primary battery.



### Step 3



- To remove the secondary battery, reposition the camera to where the display screen is facing upwards.
- Place your finger inside the empty battery compartment and pull away from the camera on the ridged battery tab.

### Step 4 — Memory Card



- Place the camera on its side with the soft touch grip facing up and the top of the camera facing right.



## Step 5



- Slide the memory card door in the direction of the arrow engraved on the camera.
- Once the door has slid open to its full position, lift up on the door.

## Step 6



- With the door open, push down the small black plunger next to the CF slot. The CF card will disengage from the slot and be ejected far enough that you can grasp it between thumb and forefinger and remove it from the slot.
- ⓘ The plunger will stay in its depressed position until a CF card is again inserted in the slot.



## Step 7 — Back Casing



- Remove the three black 4 mm JIS #0 screws on the bottom of the camera.

## Step 8



- Remove the two black 6 mm Phillips screws from the right side of the camera.



## Step 9



- Remove the two black 4 mm Phillips screws on each side of the camera under the strap hooks.

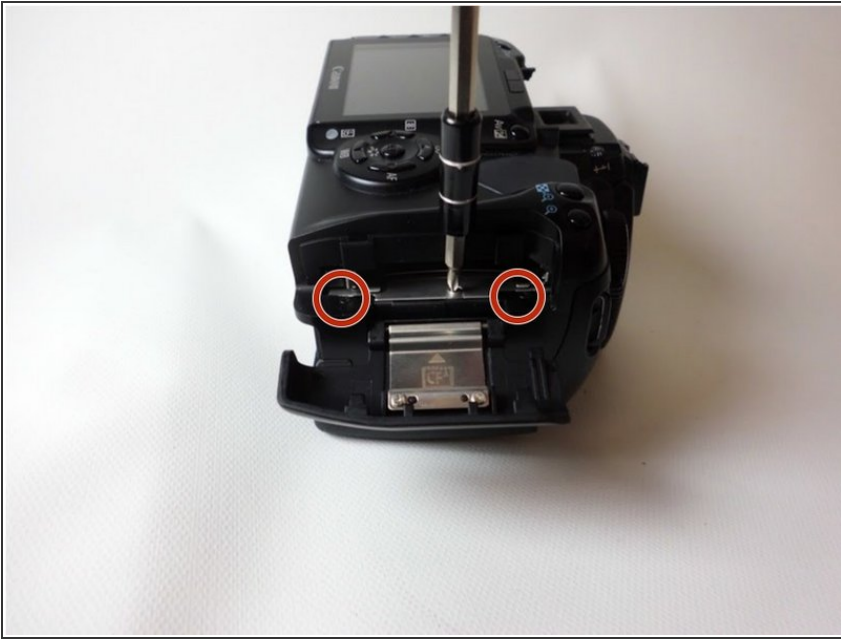
## Step 10



- Remove the two black 4 mm Phillips head screws on the side of the camera opposite to the hand grip.

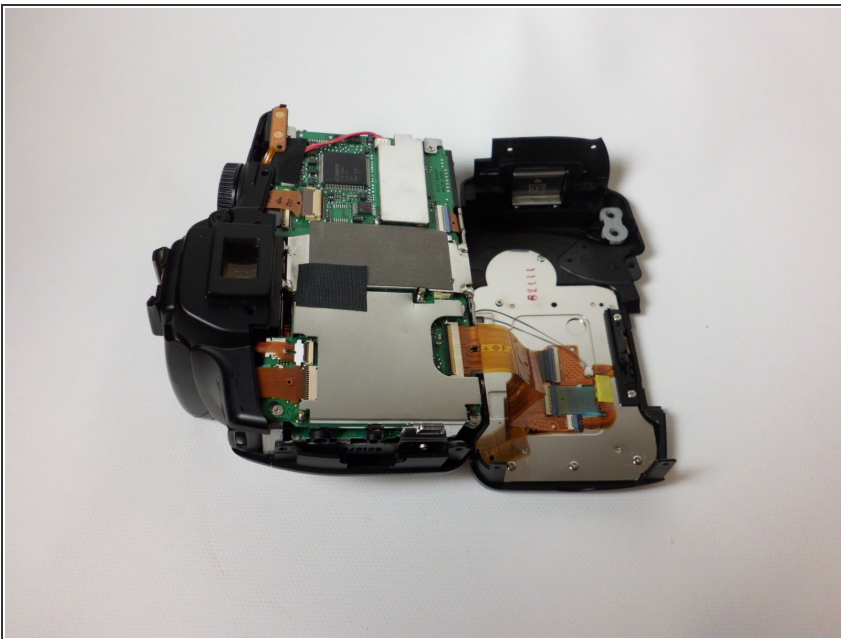


## Step 11



- Remove the three 1 mm Phillips #0 screws located in the memory card slot.
- ⓘ Two of these screws are black, and the third is silver.

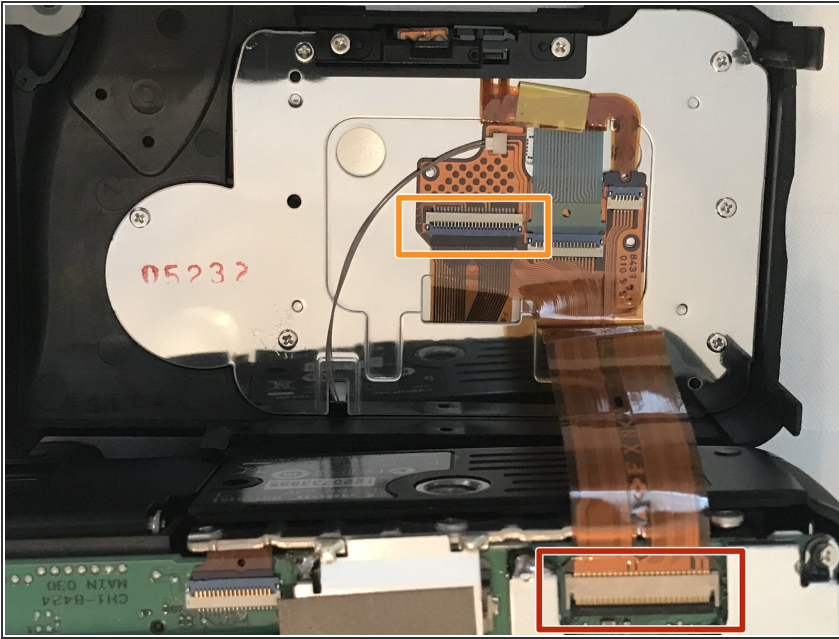
## Step 12



- Gently pry off the back casing.
- ⚠ Before completely removing the back casing, be sure to disconnect the single ribbon cable running from the motherboard to the LCD display.
- Use a spudger to lift the tab on the ribbon cable's ZIF connector.
- Gently pull the ribbon cable out of the connector.

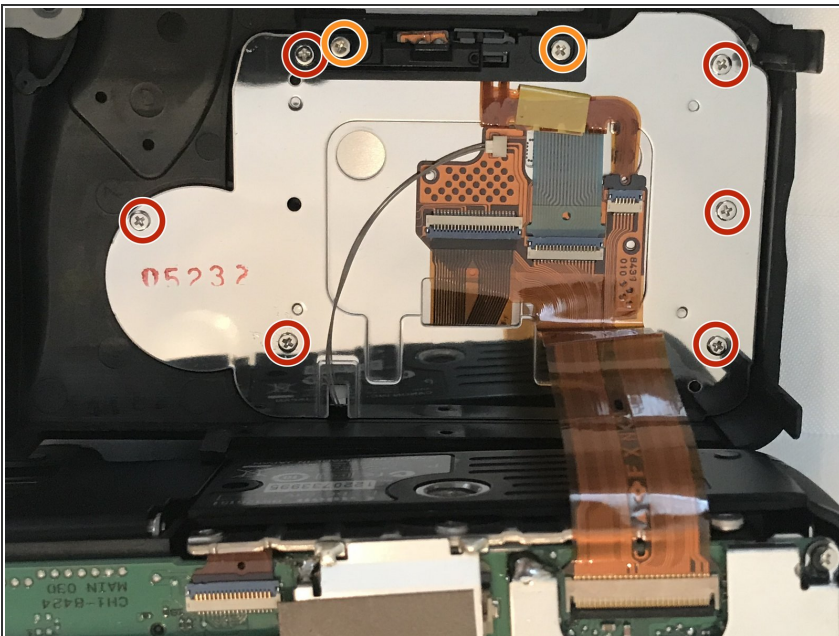


## Step 13 — Remove Ribbon Cables



- Remove the ribbon that connects the back housing to the camera logic board. Remove the cable by flipping the black part 90 degrees up away from circuit board. Pull the ribbon cable out carefully.
- Remove the screen ribbon cable from the connection. Follow the same procedure from the last step.

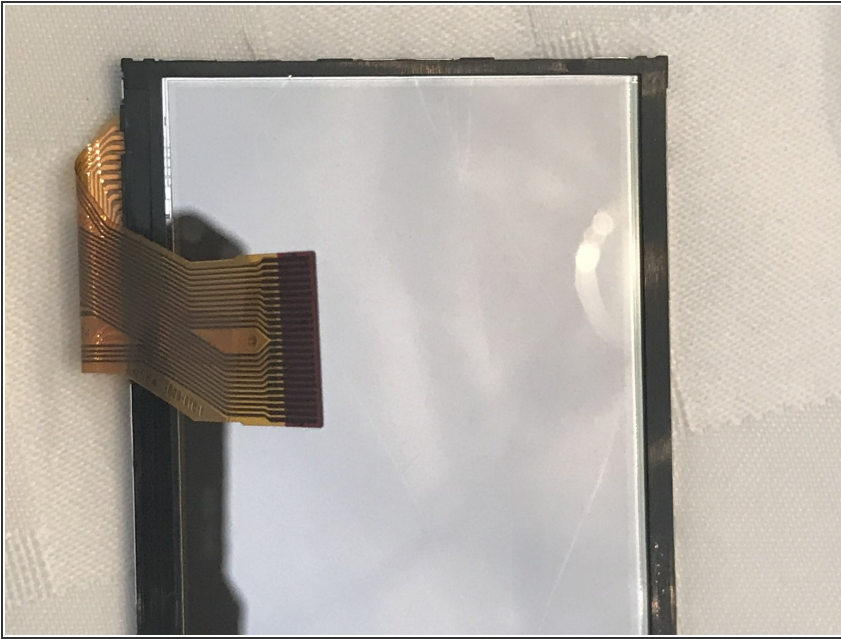
## Step 14 — Remove Screws from housing plate



- Remove 6 screws around the metal backing.
- Remove 2 screws by the plastic piece to remove proximity sensor

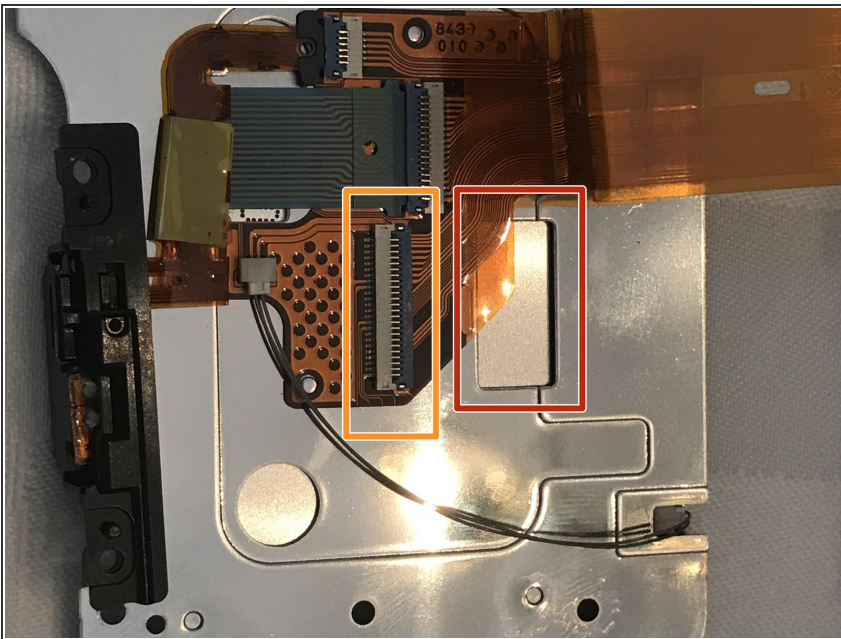


## Step 15 — Remove screen from plate.



- Carefully remove the old screen from the display board. There are 4 metal clips that hold the LCD screen to the backlight. Carefully bend them slightly outwards and the screen should come out. Pull the ribbon cable out with the screen.

## Step 16 — Thread and connect the new ribbon cable



- Carefully thread the ribbon cable from the replacement LCD screen through the hole in the metal casing. The ribbon cable from the screen has to go on top of the existing cable. You may need a spudger or toothpick to get the new cable on top.
- Connect the ribbon cable from the new screen to the connection socket.



To reassemble your device, follow these instructions in reverse order.