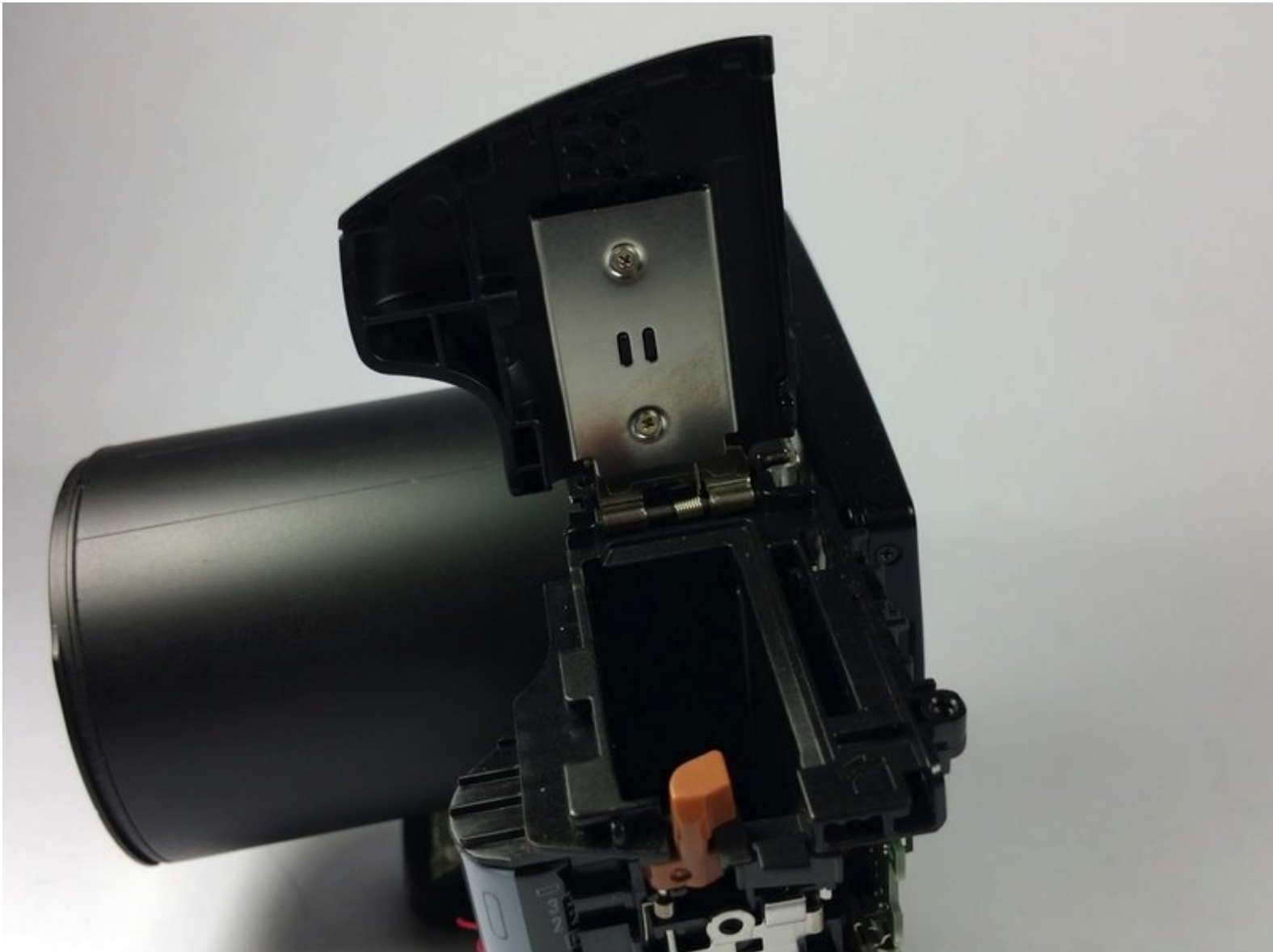




# Canon SX40 HS camera Battery Door Contact Replacement

Use this guide will assist you to replacing either the external battery compartment slide or the internal battery contact. These items could be cracked or damaged by dropping the camera.

Written By: John Bui





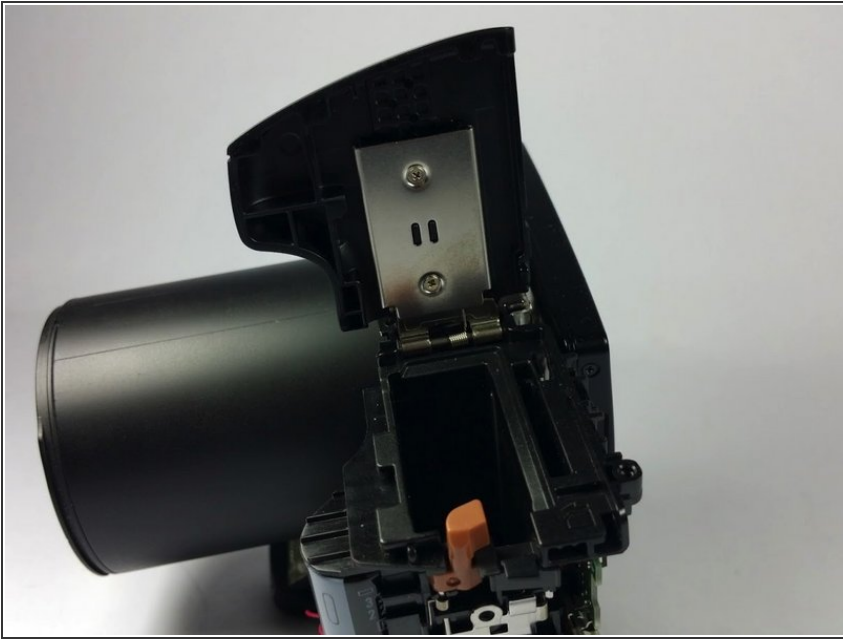


## TOOLS:

- [Phillips #00 Screwdriver](#) (1)
-

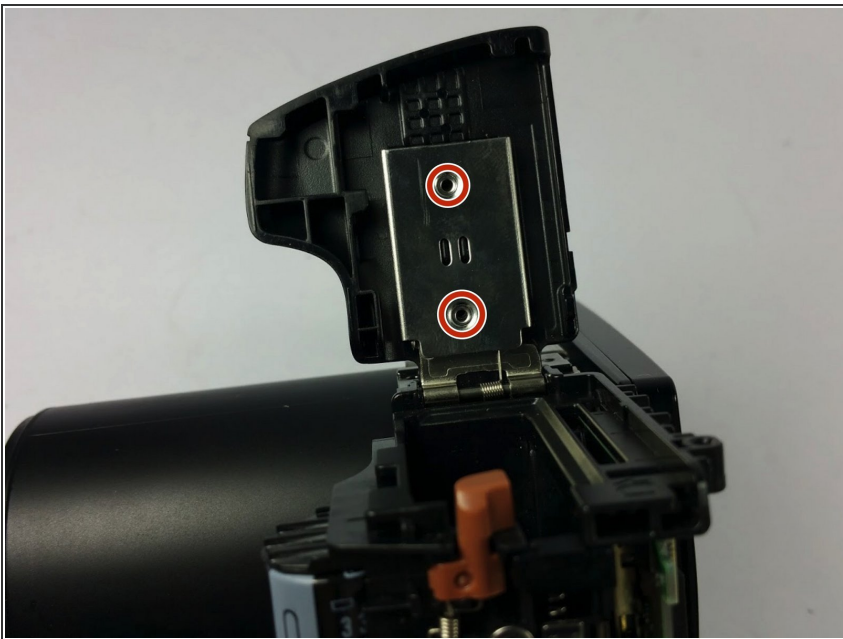


## Step 1 — Battery Door Contact



- Turn the camera to the bottom surface and open the battery compartment.

## Step 2



- Remove the two 2mm silver screws with a phillips #00 screwdriver.

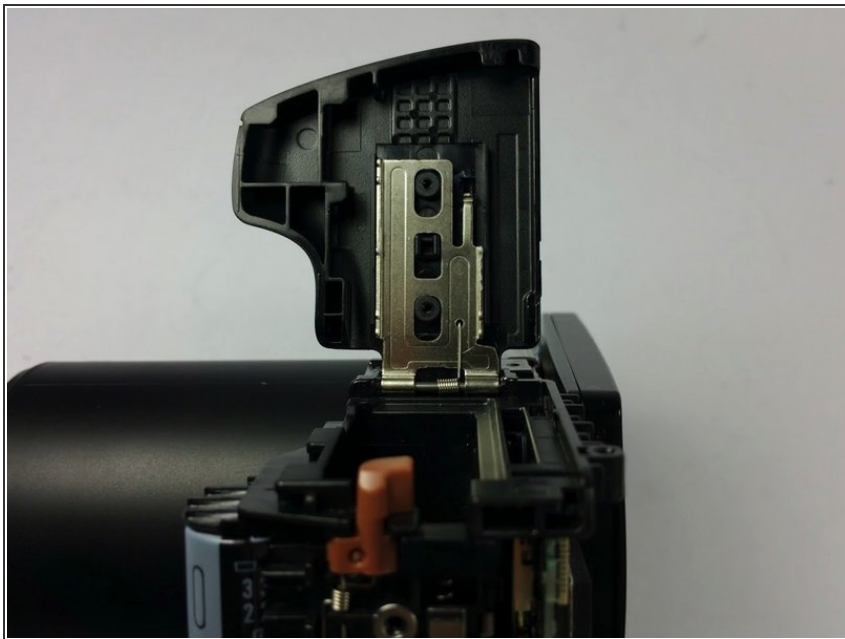


### Step 3



- Slide the battery contact away from the external piece from the battery compartment.

### Step 4



- Remove the external piece from the camera.



## Step 5



- Replace either the internal battery contact or external battery piece.

To reassemble your device, follow these instructions in reverse order.