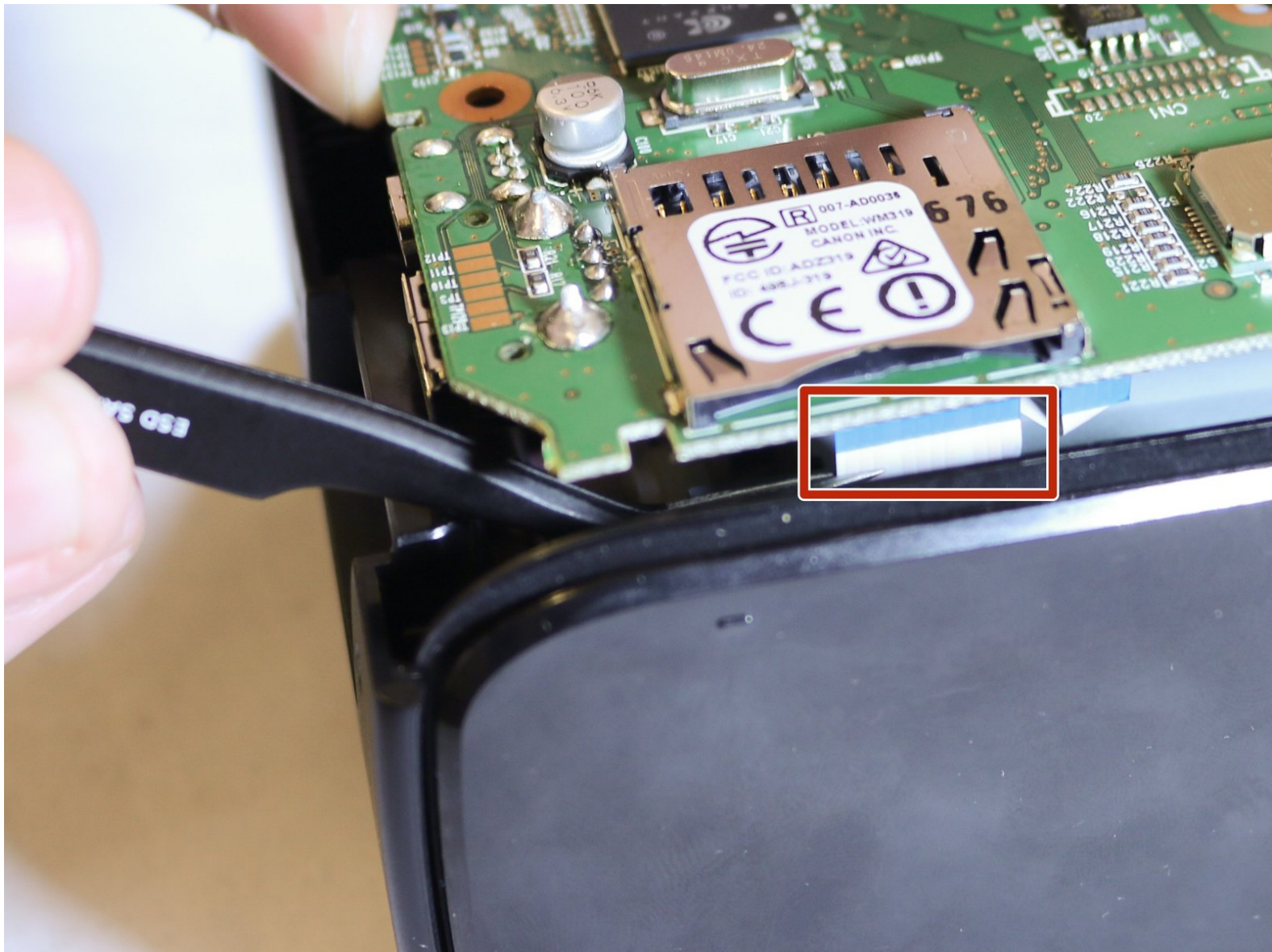




# Canon Selphy CP1200 Motherboard Replacement

This guide shows how to replace the motherboard for the Canon Selphy CP1200, and is required for other some other parts replacements.

Written By: W Sherer



## INTRODUCTION

This guide shows how to replace the motherboard of the Canon Selphy CP1200. This replacement may be done to replace a faulty motherboard in the event other components are working, and is a required step for replacing other components including the printing mechanism and cooling fan.

---

### TOOLS:

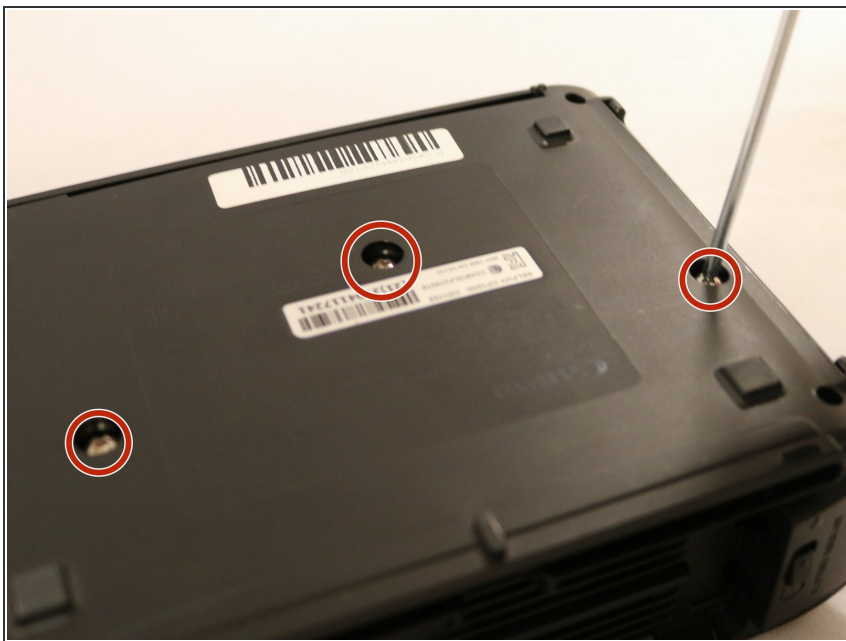
- [Phillips #000 Screwdriver](#) (1)
  - [Phillips #1 Screwdriver](#) (1)
  - [Tweezers](#) (1)
-

## Step 1 — LCD/Buttons



- Unscrew the four 6mm PH000 corner screws.
- ⓘ This will require a screwdriver with a long, narrow shaft.

## Step 2



- Unscrew the three 4mm PH1 screws on the bottom of the printer.



## Step 3



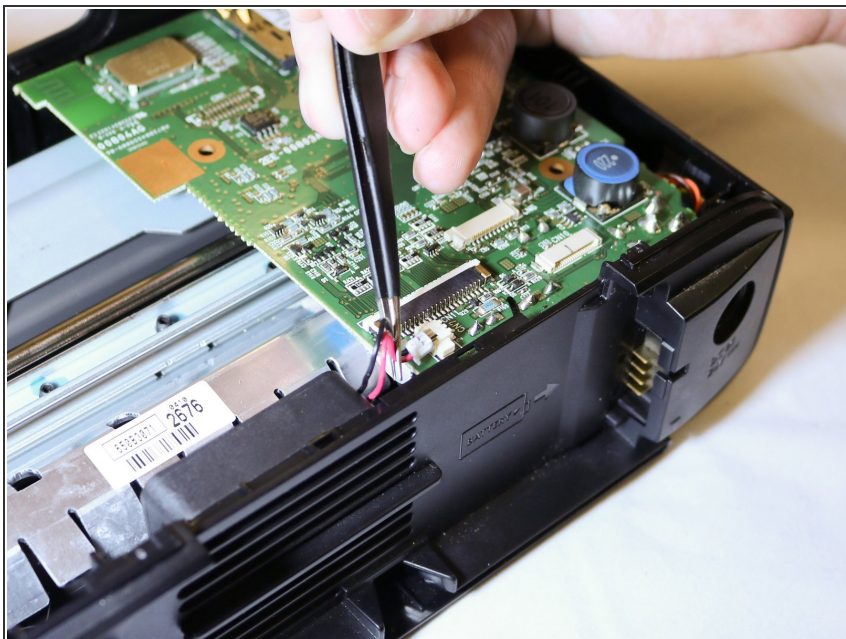
- Gently pry open the top of the case from either the front or back.
  - ⓘ A plastic opening tool may help.
- Be careful in lifting the top assembly as it is attached to the motherboard at this point.

## Step 4



- Keeping the top assembly elevated, detach the ribbon cables connecting the LCD and buttons to the motherboard from the motherboard.
  - ⓘ Tweezers may be useful given the limited space between the top assembly and motherboard.
- The top assembly, containing both the LCD and buttons, will now be completely free

## Step 5 — Motherboard



- Detach the fan cable from the motherboard.

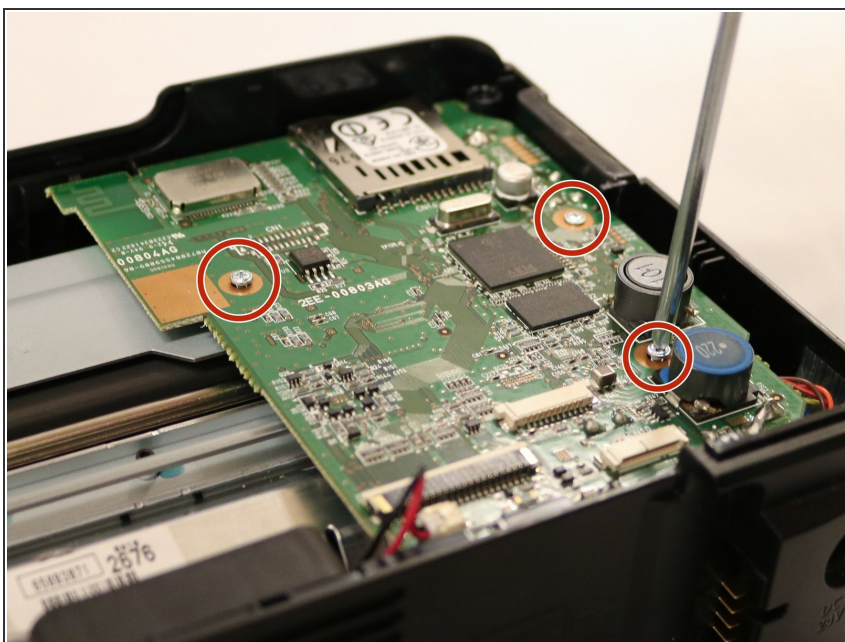
## Step 6



- Detach the ribbon cable leading to the DC in port and battery leads.
- ⓘ Tweezers may be useful.



## Step 7



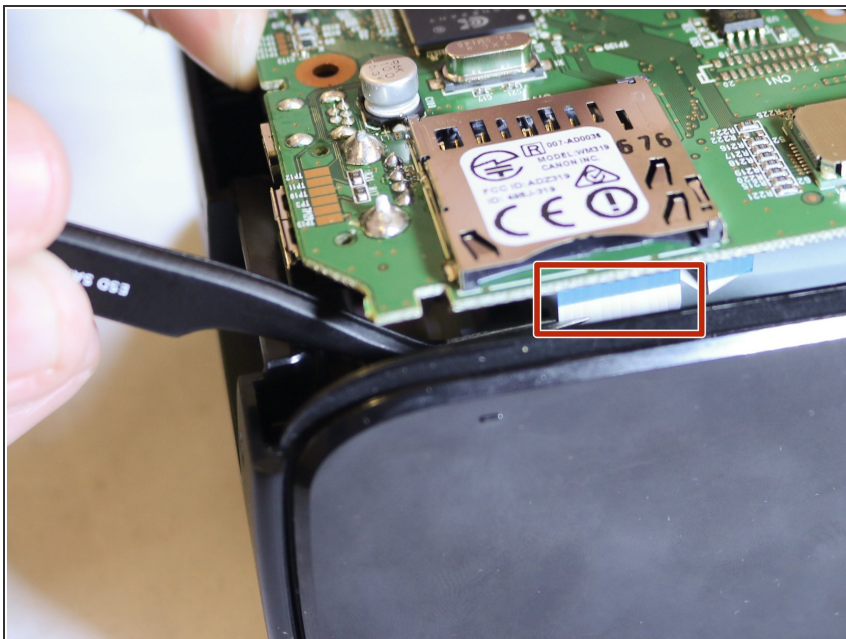
- Unscrew the three 3mm PH000 screws from the motherboard.

## Step 8



- Disconnect the bundled cables leading to the printing mechanism.

## Step 9



- Gently lift the motherboard and detach the ribbon cables leading to the print mechanism.
- ⓘ Tweezers may be useful due to the limited amount of space.

To reassemble your device, follow these instructions in reverse order.