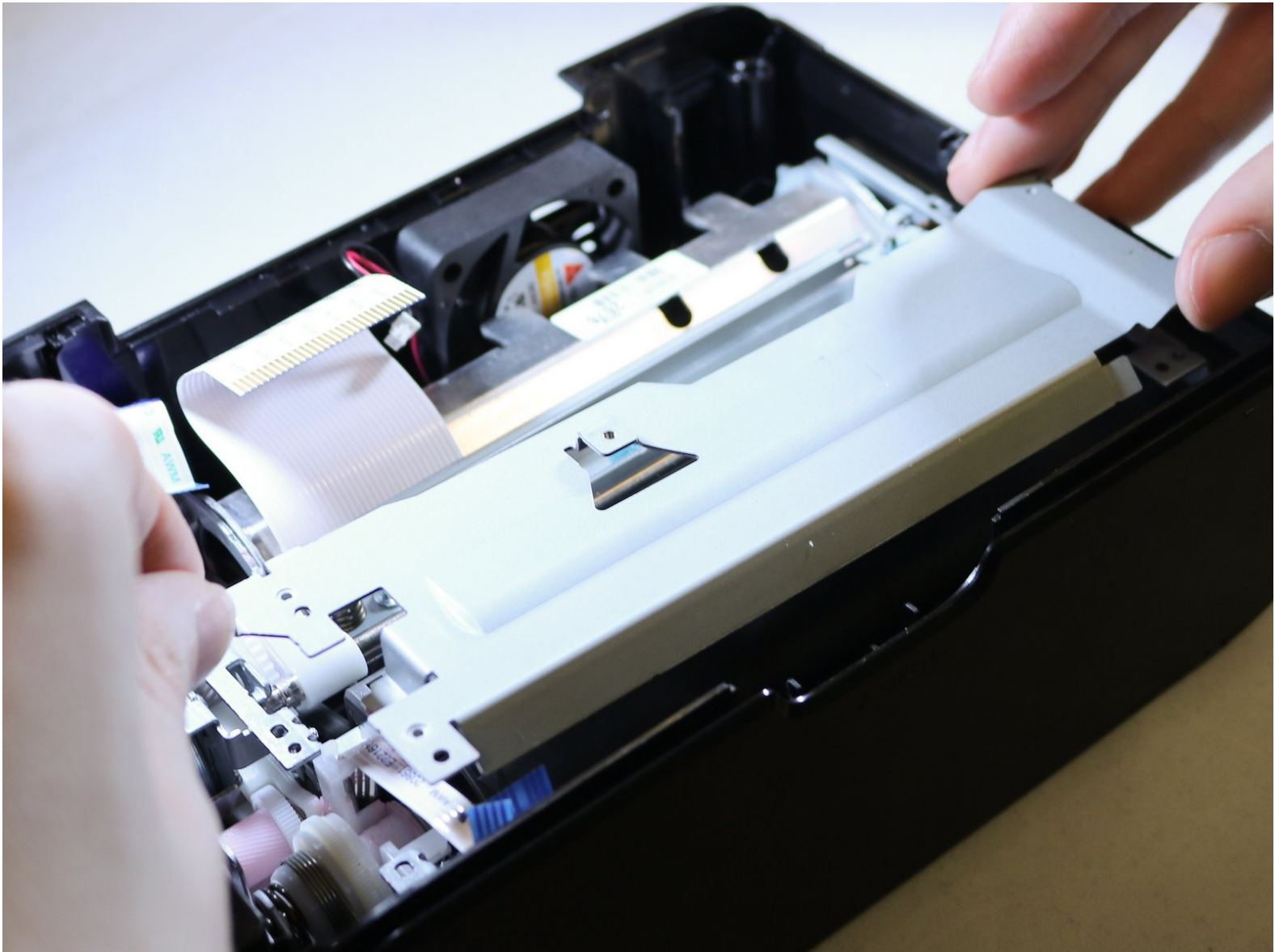




Canon Selphy CP1200 Print Mechanism Replacement

This guide shows how to replace the printing mechanism of the Canon Selphy CP1200. It is also required for replacing the cooling fan and battery leads.

Written By: W Sherer



INTRODUCTION

This guide shows how to replace the printing mechanism for the Canon Selphy CP1200. This replacement may be necessary if the printing mechanism is faulty or is printing poor quality pictures while other device components are working and troubleshooting has failed. It is also a preliminary step for replacing both the battery leads and cooling fan.



TOOLS:

- [Phillips #000 Screwdriver](#) (1)
 - [Phillips #1 Screwdriver](#) (1)
 - [Tweezers](#) (1)
-

Step 1 — LCD/Buttons



- Unscrew the four 6mm PH000 corner screws.
- ⓘ This will require a screwdriver with a long, narrow shaft.

Step 2



- Unscrew the three 4mm PH1 screws on the bottom of the printer.

Step 3



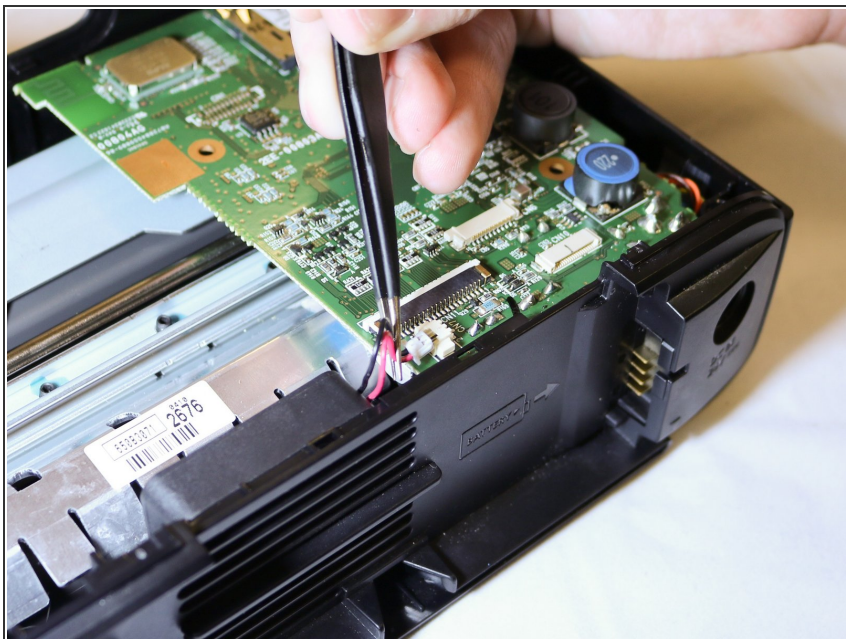
- Gently pry open the top of the case from either the front or back.
- ⓘ A plastic opening tool may help.
- Be careful in lifting the top assembly as it is attached to the motherboard at this point.

Step 4



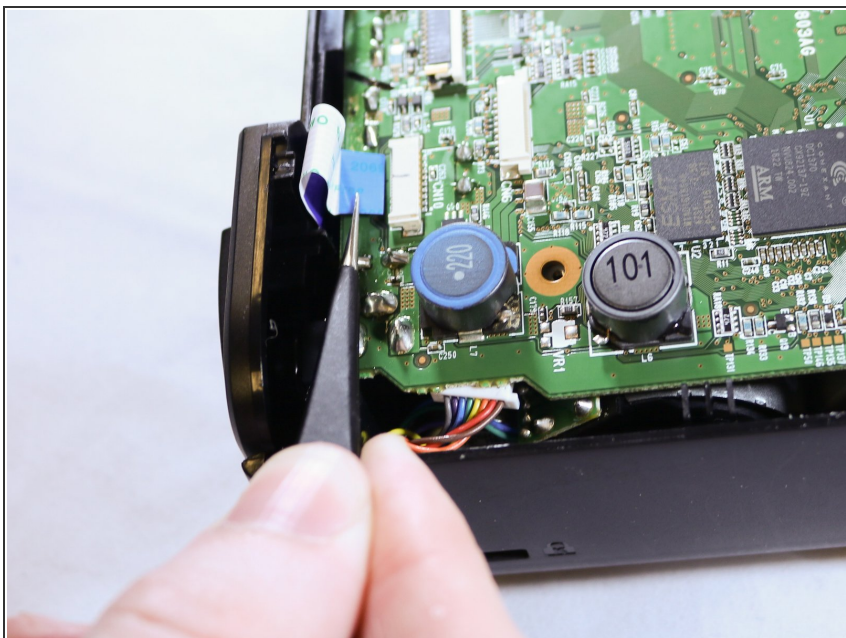
- Keeping the top assembly elevated, detach the ribbon cables connecting the LCD and buttons to the motherboard from the motherboard.
- ⓘ Tweezers may be useful given the limited space between the top assembly and motherboard.
- The top assembly, containing both the LCD and buttons, will now be completely free

Step 5 — Motherboard



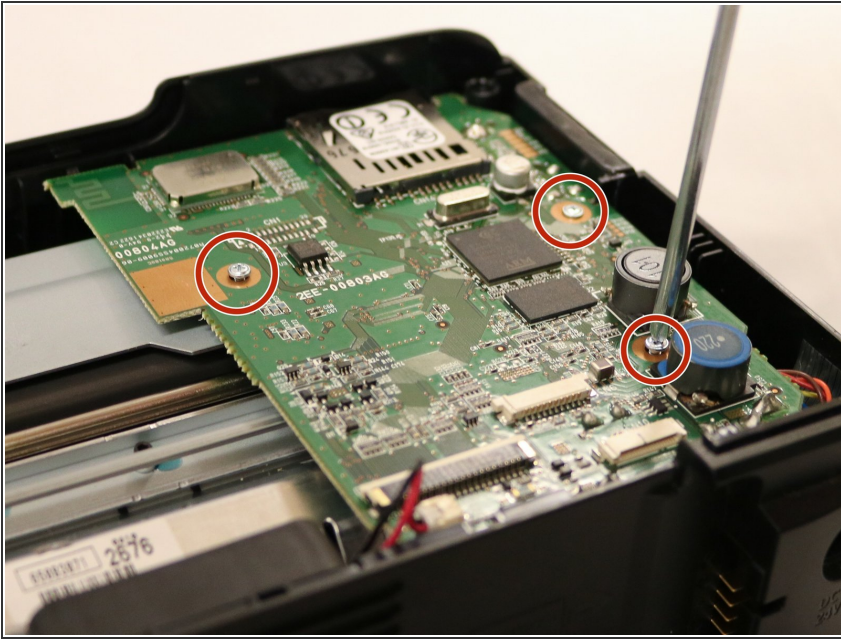
- Detach the fan cable from the motherboard.

Step 6



- Detach the ribbon cable leading to the DC in port and battery leads.
- ⓘ Tweezers may be useful.

Step 7



- Unscrew the three 3mm PH000 screws from the motherboard.

Step 8



- Disconnect the bundled cables leading to the printing mechanism.

Step 9



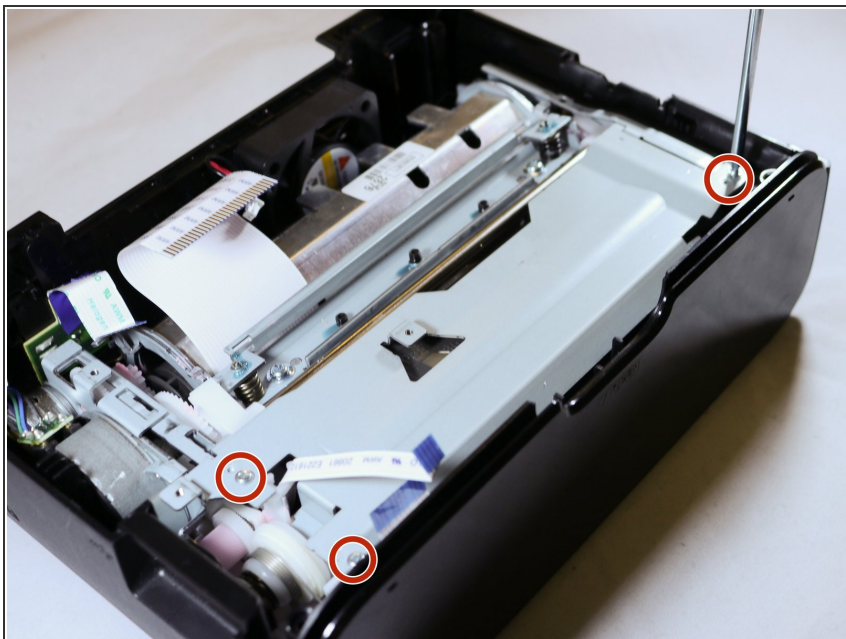
- Gently lift the motherboard and detach the ribbon cables leading to the print mechanism.
- ⓘ Tweezers may be useful due to the limited amount of space.

Step 10 — Print Mechanism



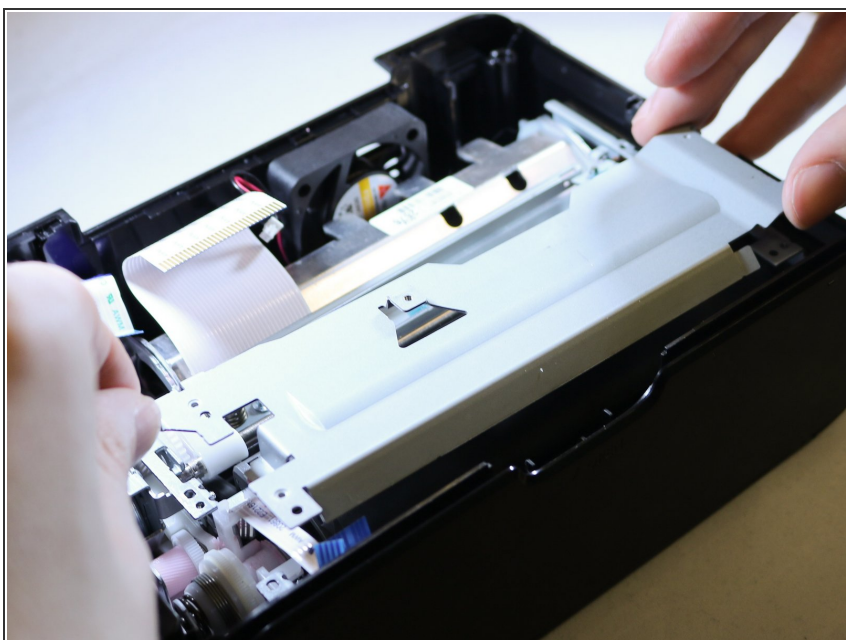
- Open the side door and depress the ink cassette release.
- Slide out and remove the ink cassette.

Step 11



- Unscrew the three 3mm PH000 screws securing the metal plate to the printing mechanism.

Step 12



- Lift out the print mechanism of the printer case.

To reassemble your device, follow these instructions in reverse order.