



# Canon Selphy CP720 Screen Replacement

This is a guide on how to remove and replace the screen in the Selphy CP720.

Written By: Peter Ely



## INTRODUCTION

This guide will show you how to properly remove and replace the screen on the Canon Selphy CP720 in the event that it is damaged or does not work.



### TOOLS:

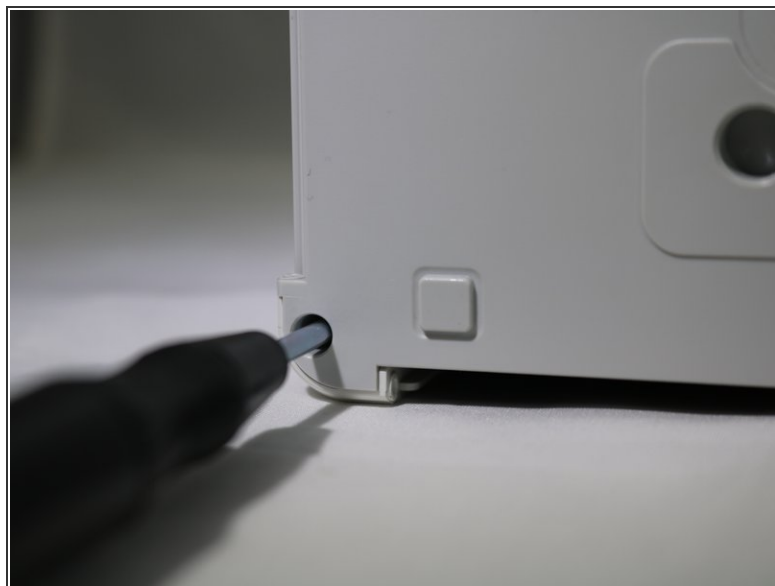
- [Phillips #00 Screwdriver](#) (1)
  - [Phillips #1 Screwdriver](#) (1)
-

## Step 1 — Screen



- Remove the three 6mm Phillips #1 screws.

## Step 2



- Remove the four 8mm Phillips #1 screws, located in each corner of the device.

### Step 3



- Grasp one half of the device's shell in each hand, and pull them apart. They are connected, so don't separate them completely.

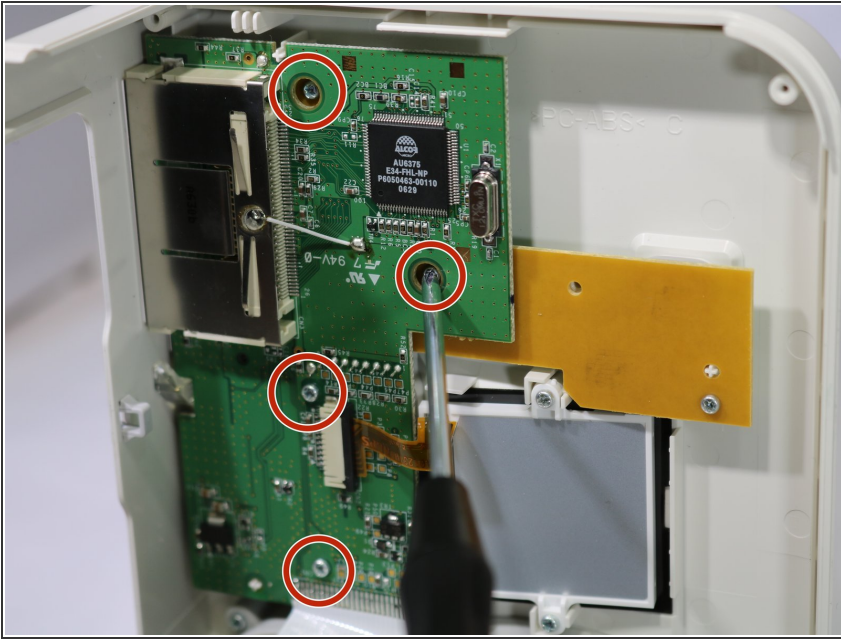
### Step 4



- Lift the side panel off to expose the inside of the printer.

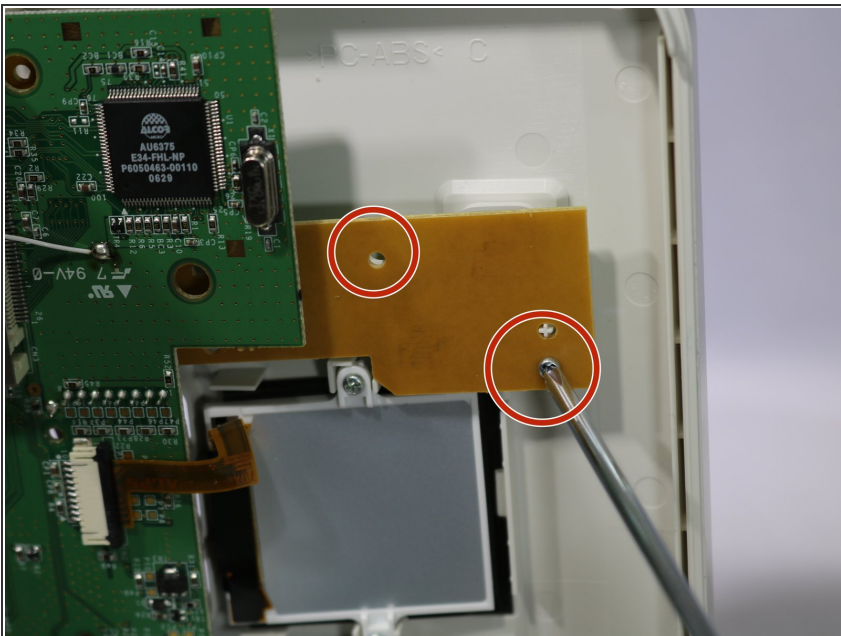


## Step 5



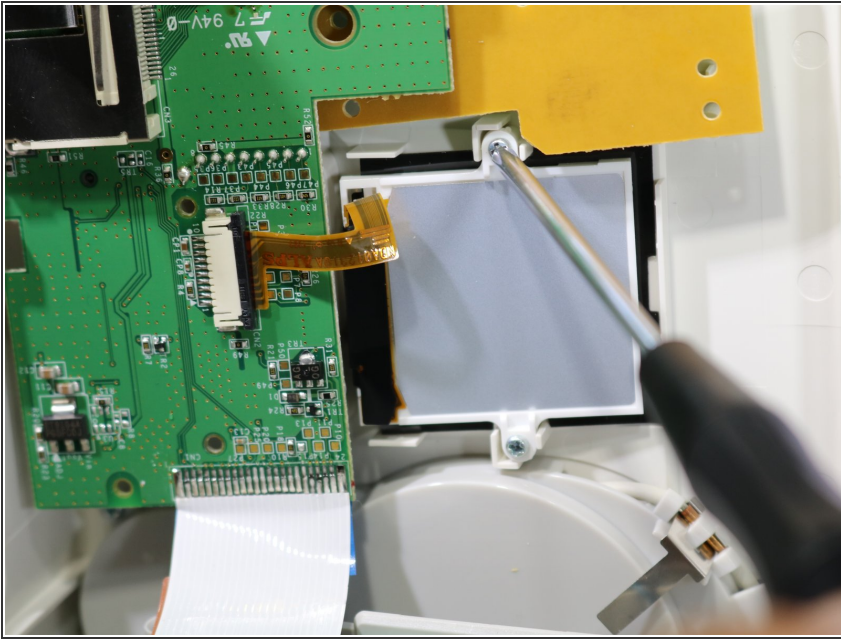
- Remove the four 8mm Phillips #00 screws that hold the upper circuit board to the shell.

## Step 6



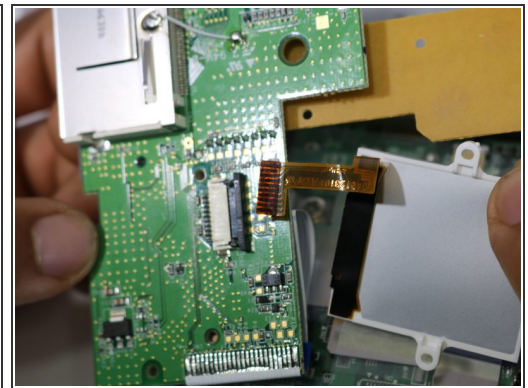
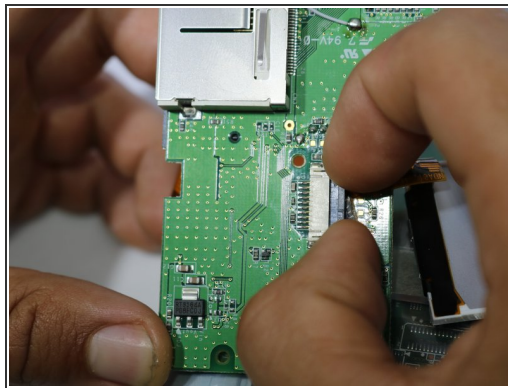
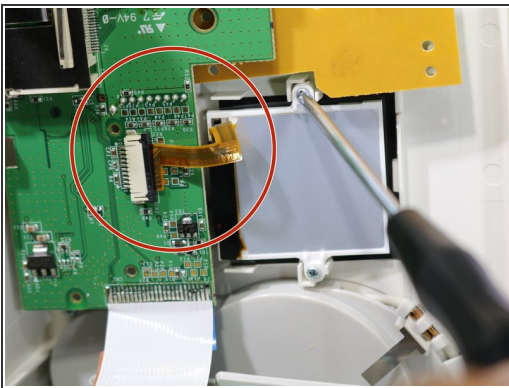
- Remove two 8mm Phillips #00 screws from the yellow board.

## Step 7



- Remove the two 8mm Phillips #00 screws from the screen.
- Lift off the circuit board, yellow board, and screen.

## Step 8



- To separate the screen from the circuit board, grasp the data ribbon cable near the base of the black connector on the circuit board and pull parallel to the surface of the board, toward the screen.

To reassemble your device, follow these instructions in reverse order.