



Canon Selphy CP910 LCD Screen Replacement

This guide will show you how to replace the LCD Screen in the Canon Selphy CP910.

Written By: Christie Peralta



INTRODUCTION

The Canon Selphy CP910 is used to print pictures from a camera and WiFi connection. If there are any issues with the LCD screen of the printer, it may be necessary to remove it. For information regarding troubleshooting issues with the Canon Selphy CP910, go to [Canon Selphy CP910 Troubleshooting](#).

Contact the manufacturer for inquiries about receiving parts of the Canon Selphy CP910.



TOOLS:

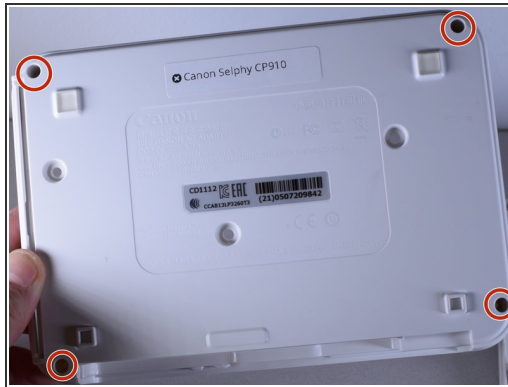
- [Phillips #1 Screwdriver](#) (1)
 - [64 Bit Driver Kit](#) (1)
-

Step 1 — Disassembling Canon Selphy CP910 Body



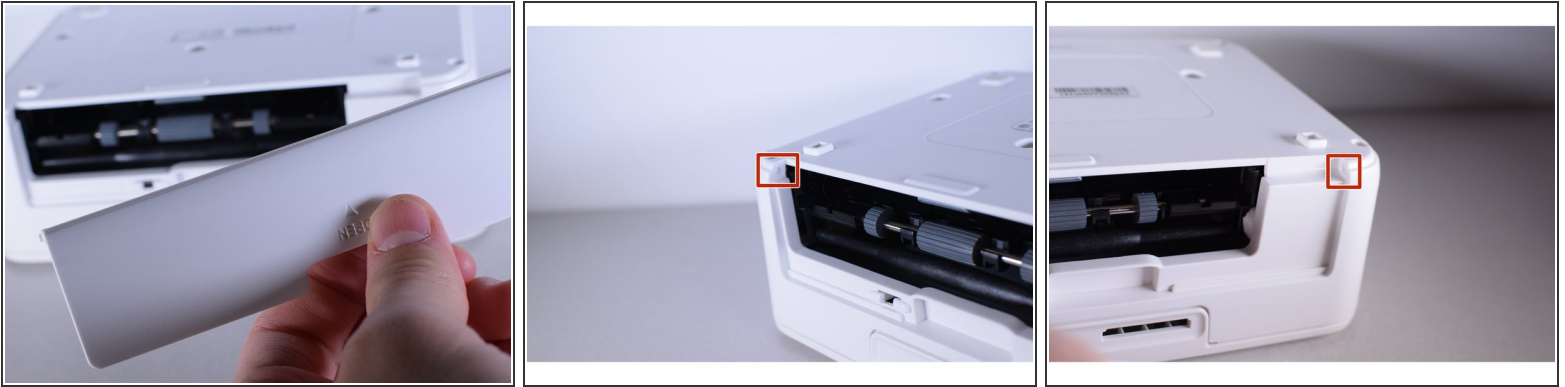
- Turn the printer over.
- Use the PH1 screw bit to remove the three 8 mm screws in the middle of the back plate.
- ☑ Keep track of these screws because you will need them to reassemble the printer.

Step 2



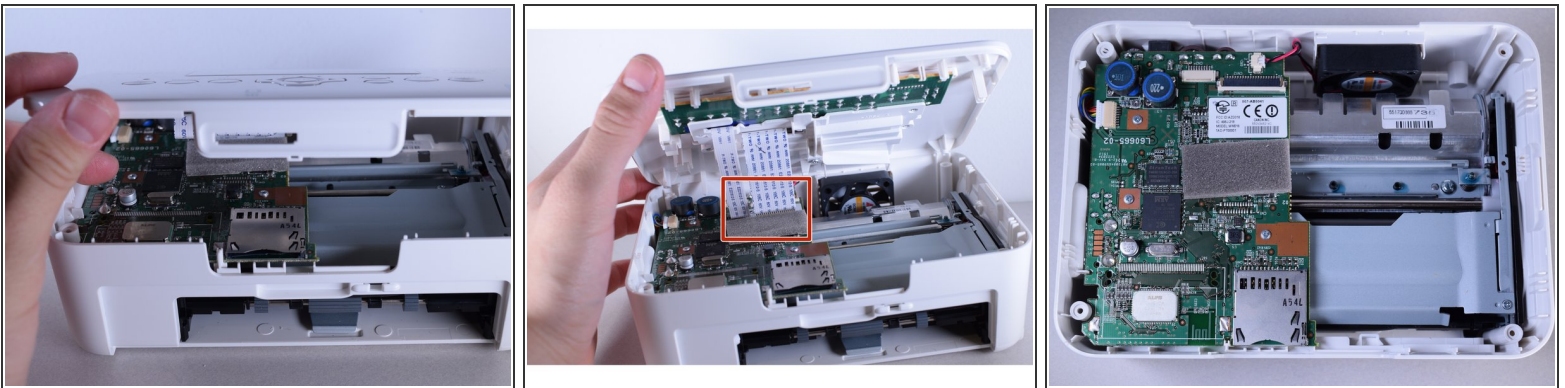
- Loosen up the four 10 mm corner screws.
- ⓘ A screwdriver with a long shaft approximately 7mm in diameter will make it easier to reach these screws.

Step 3



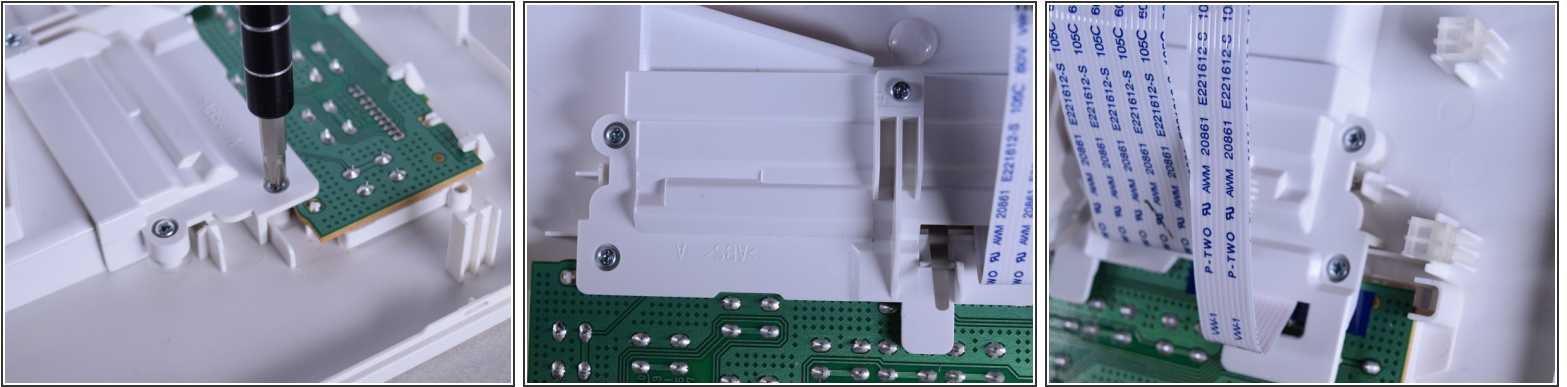
- Turn the device around and remove the "open" lid.
 - ❗ This lid needs to be removed in order to take the printer apart.
- Gently bend the lid and remove it from its hinges.

Step 4



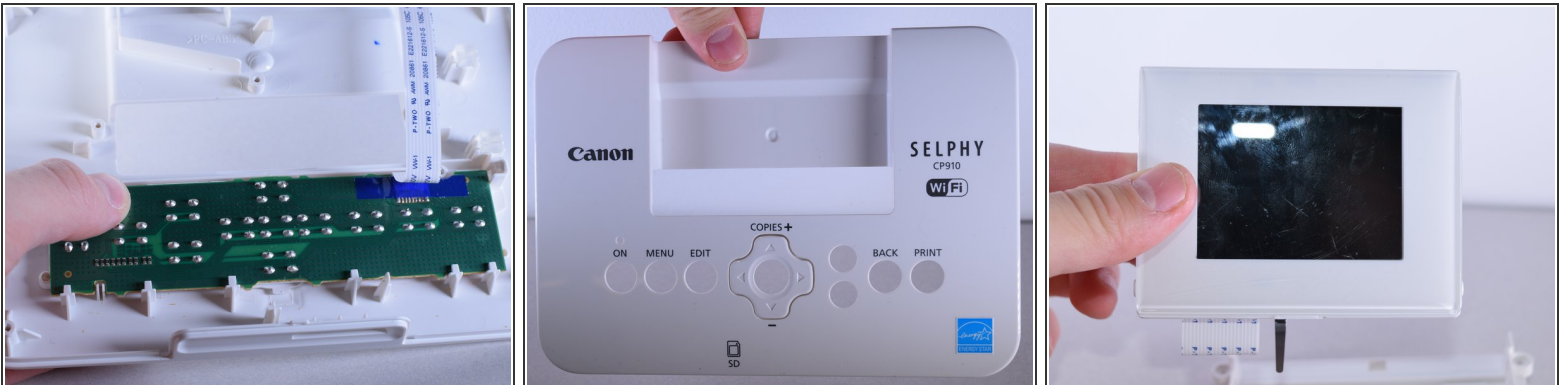
- Turn the device back over and lift the top panel up.
- Disconnect the ribbon cables leading to the LCD screen.
- Pull the top panel off.

Step 5 — LCD Screen



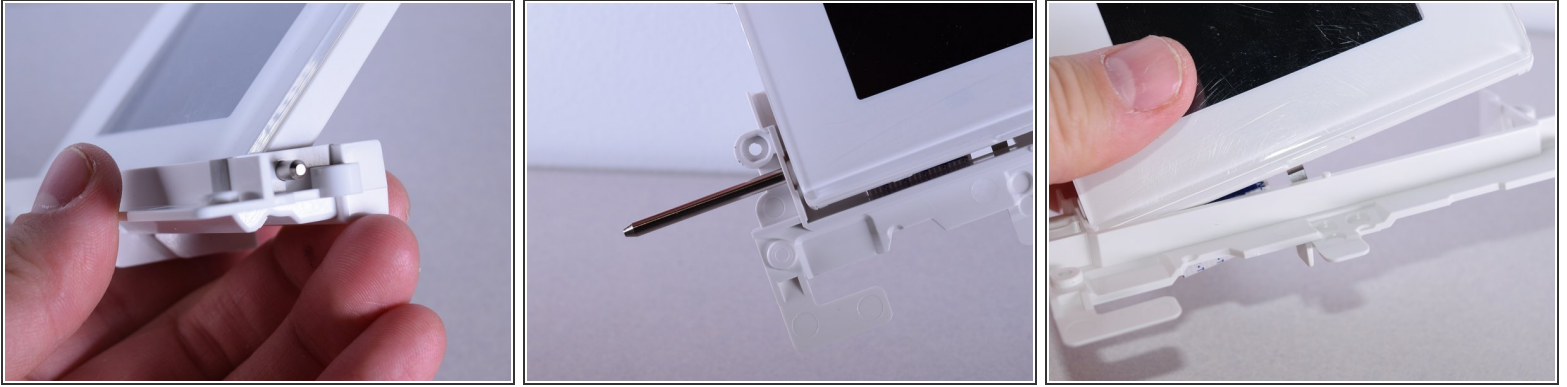
- Once you detach the top, turn the device around.
- Use the PH0 screw bit to remove the five **[size]** screws.

Step 6



- Push out the LCD screen from the main case.
- ⓘ The screen should slide out freely.

Step 7



- Pull out the rod connecting the LCD screen to the frame.
- Insert the new screen.

To reassemble your device, follow these instructions in reverse order.