



Canon Selphy CP910 Printer Body Replacement

This guide will show you how to replace the printer body of the Canon Selphy CP910.

Written By: Christie Peralta



INTRODUCTION

The Canon Selphy CP910 is used to print pictures from a camera and WiFi connection. If there are any issues with the body of the printer, it may be necessary to remove it. For information regarding troubleshooting issues with the Canon Selphy CP910, go to [Canon Selphy CP910 Troubleshooting](#).

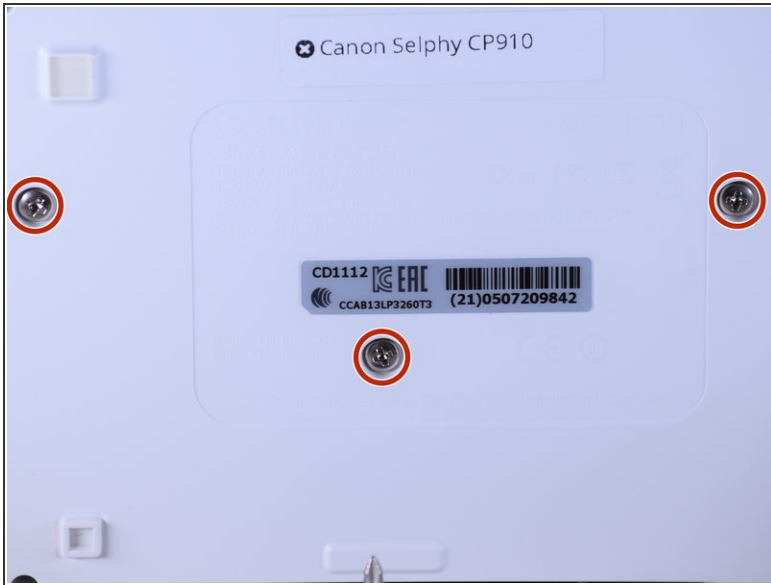
Contact the manufacturer for inquiries about receiving parts of the Canon Selphy CP910.



TOOLS:

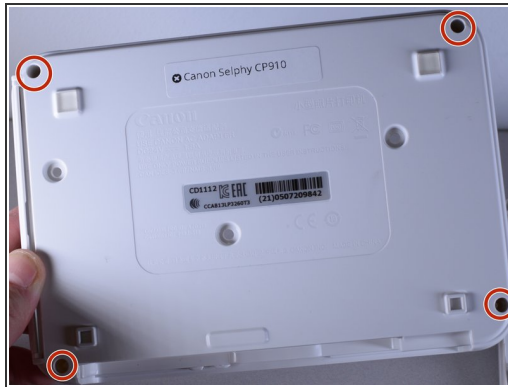
- [Phillips #1 Screwdriver](#) (1)
 - [64 Bit Driver Kit](#) (1)
 - [Glue Gun](#) (1)
-

Step 1 — Disassembling Canon Selphy CP910 Body



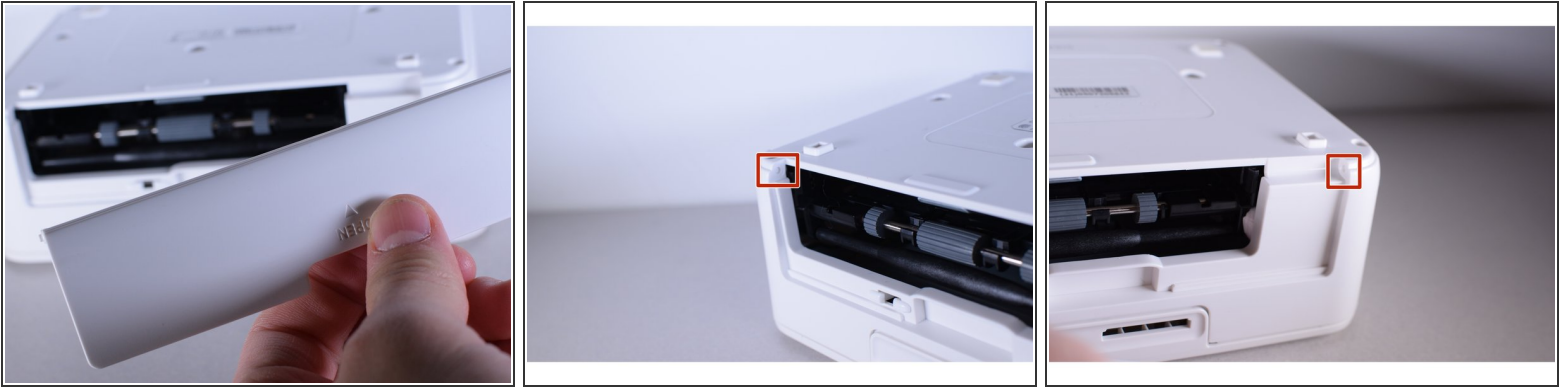
- Turn the printer over.
- Use the PH1 screw bit to remove the three 8 mm screws in the middle of the back plate.
- ☑ Keep track of these screws because you will need them to reassemble the printer.

Step 2



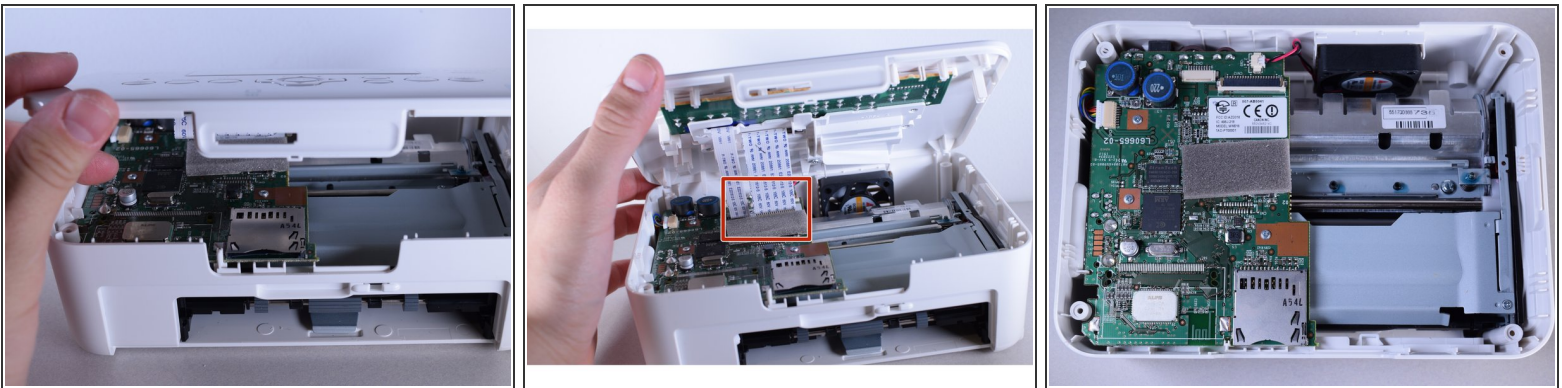
- Loosen up the four 10 mm corner screws.
- ⓘ A screwdriver with a long shaft approximately 7mm in diameter will make it easier to reach these screws.

Step 3



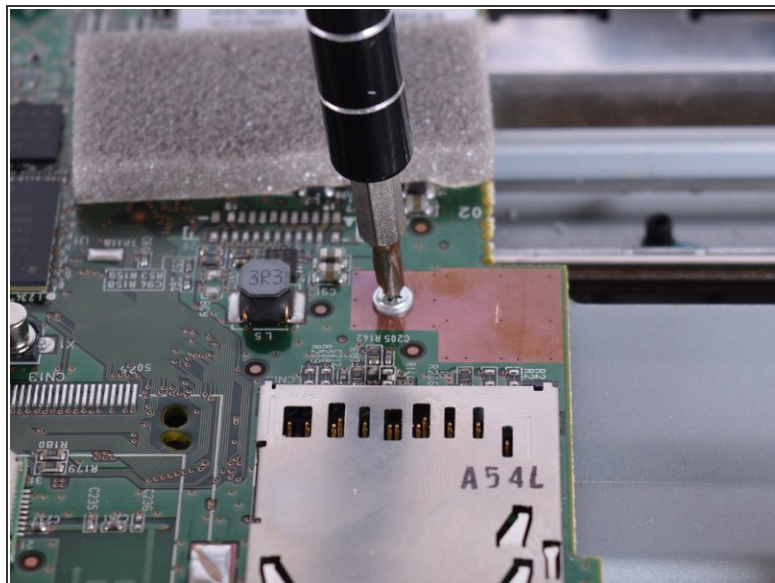
- Turn the device around and remove the "open" lid.
 - ❗ This lid needs to be removed in order to take the printer apart.
- Gently bend the lid and remove it from its hinges.

Step 4



- Turn the device back over and lift the top panel up.
- Disconnect the ribbon cables leading to the LCD screen.
- Pull the top panel off.

Step 5 — Printer Body



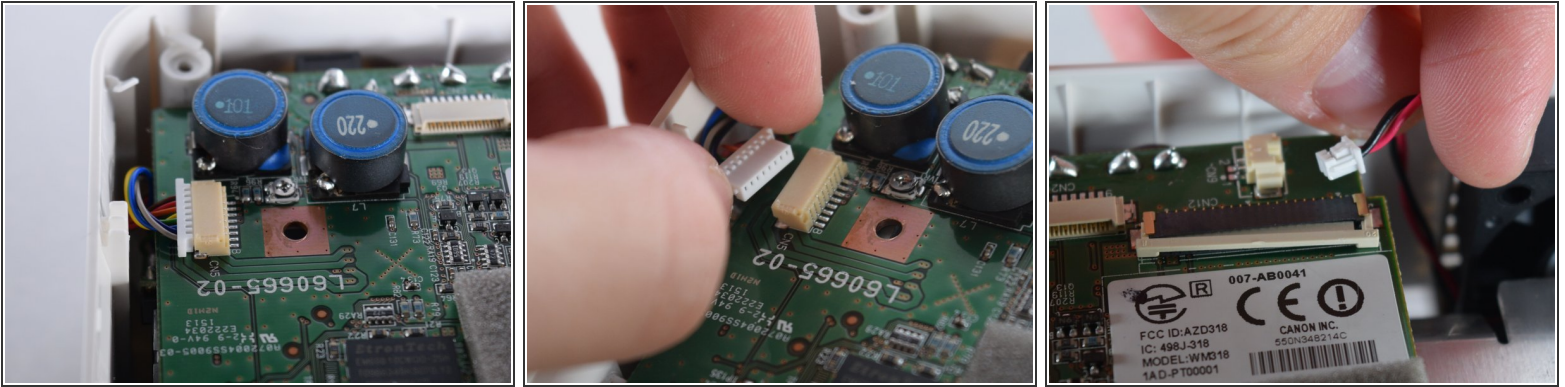
- Use the PH1 screw driver to remove the three screws on the motherboard.

Step 6



- Remove the printer.
- ⓘ This will prevent the printer from falling out during repair.

Step 7

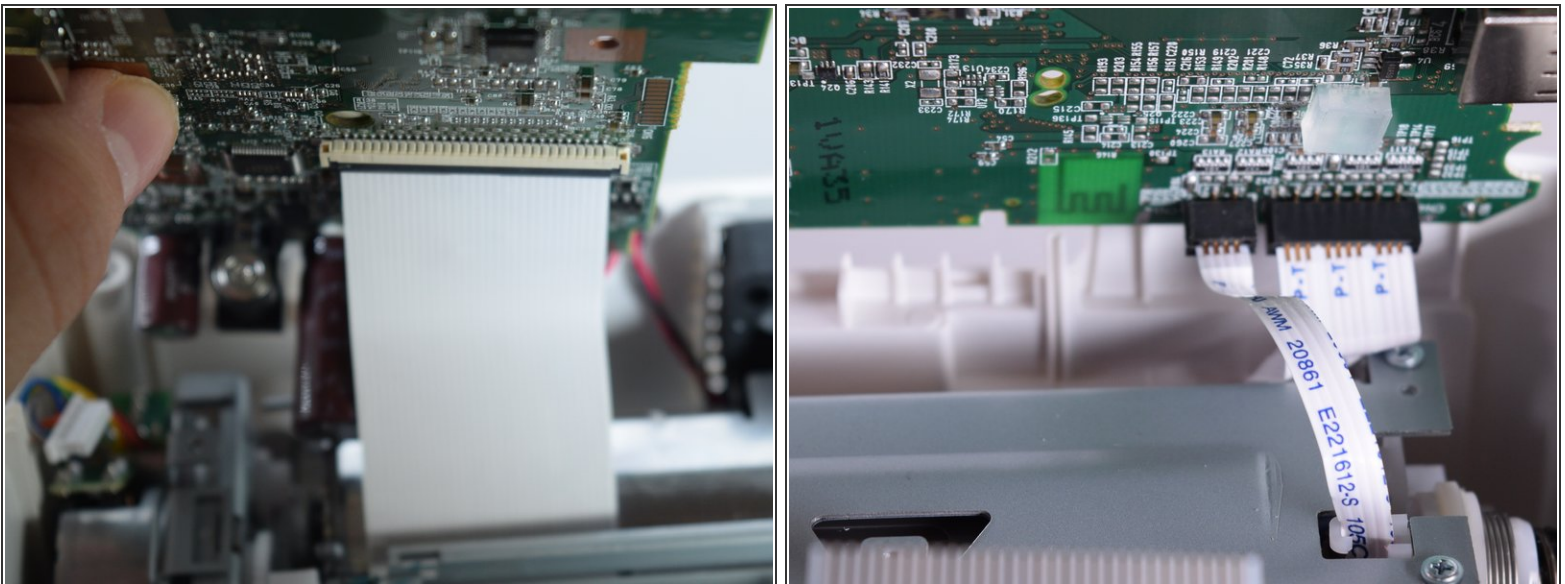


- Remove the output connections.

⚠ Be careful! Do not pull too hard because the wires might rip.

ⓘ Output connections are located on the corners of the motherboard.

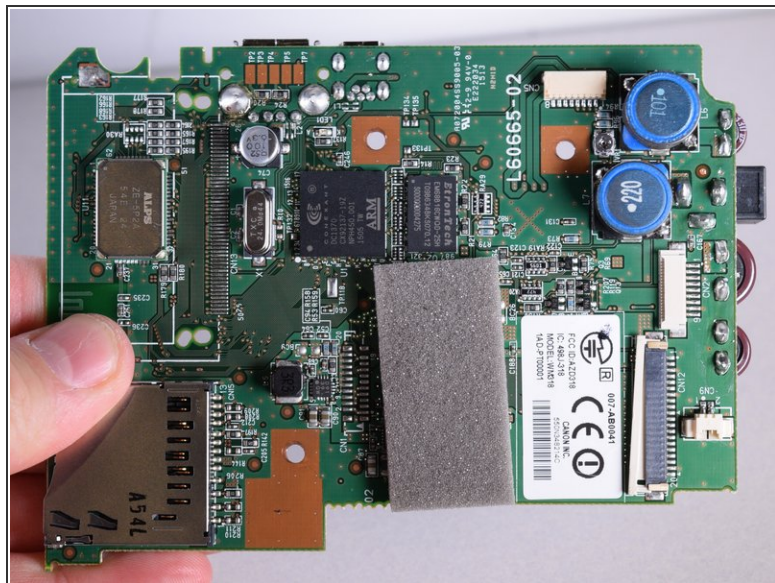
Step 8



- The motherboard is attached to three more ribbon wires.
- Detach these wires.

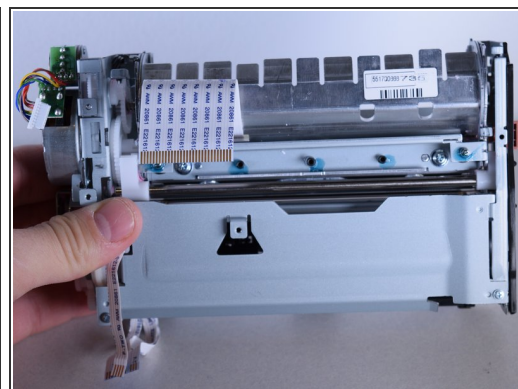
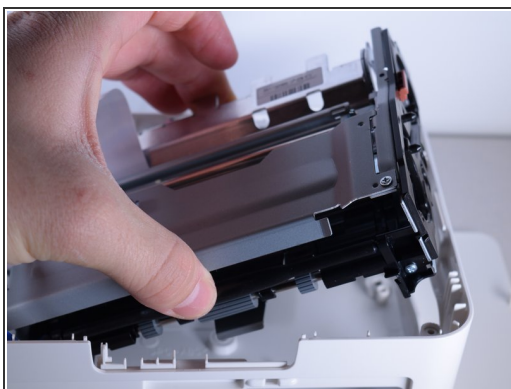
⚠ Be careful not to pull too hard.

Step 9



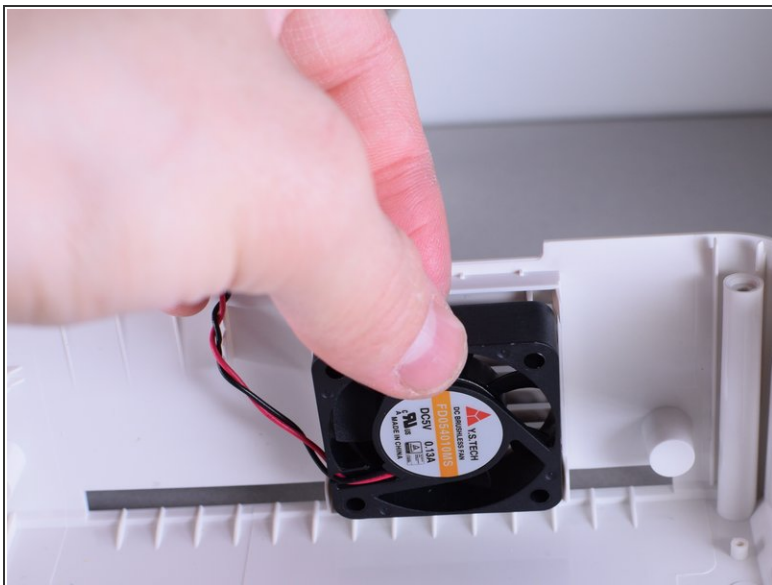
- Separate the motherboard from the main hard drive.

Step 10



- Remove the main hard drive from the printer body.

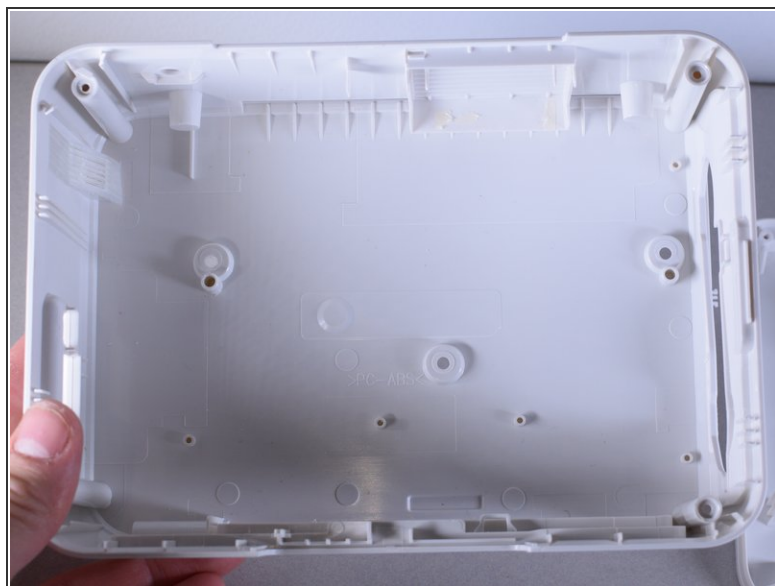
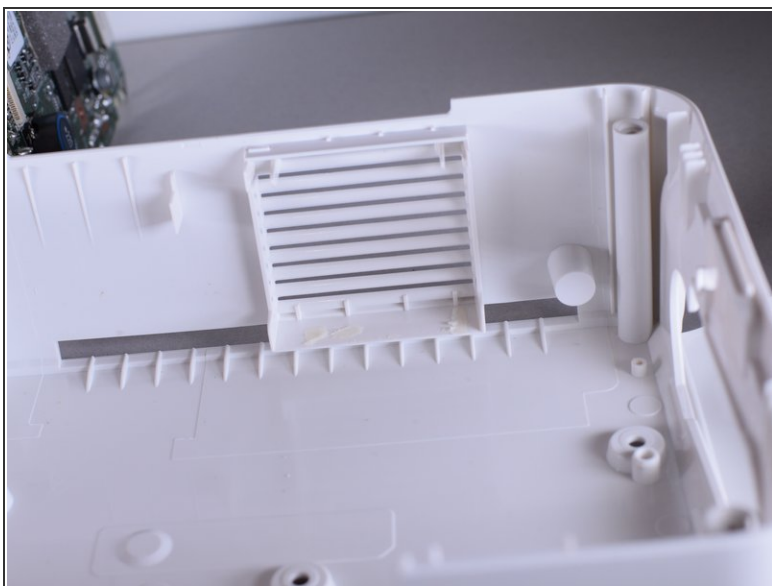
Step 11



- Gently remove the fan from the body.

i The fan is glued to the case. When you install it in the new body, use hot glue to secure it in place.

Step 12



i The empty case will look like this once all the parts are removed.

To reassemble your device, follow these instructions in reverse order.