



Canon Sure Shot Z115 Caption Mode-Selection Wheel Replacement

This guide explains how to remove the mode selection wheel from the Canon Sure Shot Z115 Caption camera.

Written By: Mathew Pillozzi



INTRODUCTION

This guide will show you how to remove the mode selection wheel from the Canon Sure Shot Z115 Caption Camera. This could be useful if you want to replace the mode selection wheel or if the wheel on your camera stops functioning normally and you want to try to fix it.



TOOLS:

- [Phillips #0 Screwdriver](#) (1)



PARTS:

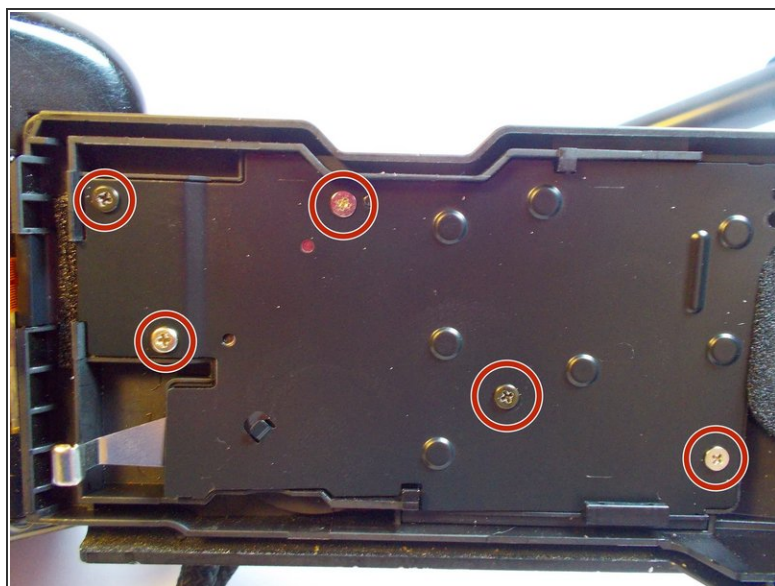
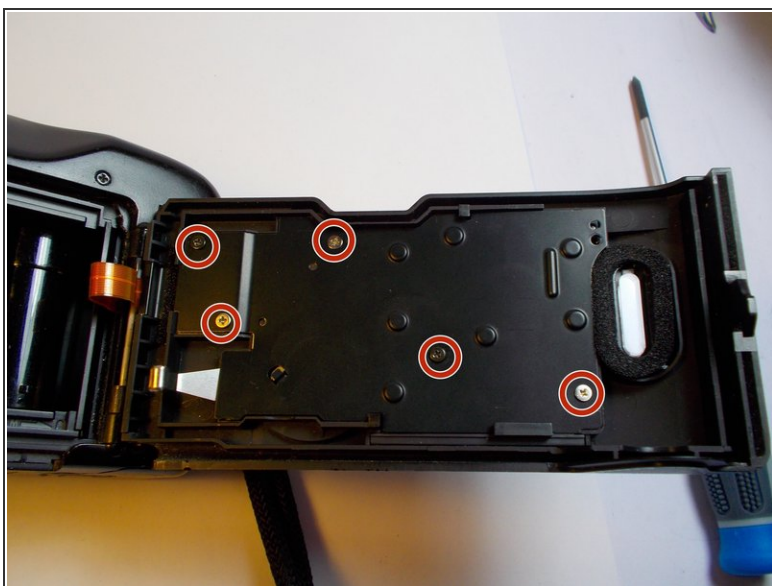
- [Mode Selection Wheel for Canon Sure Shot Z115 Caption](#) (1)

Step 1 — Mode-Selection Wheel



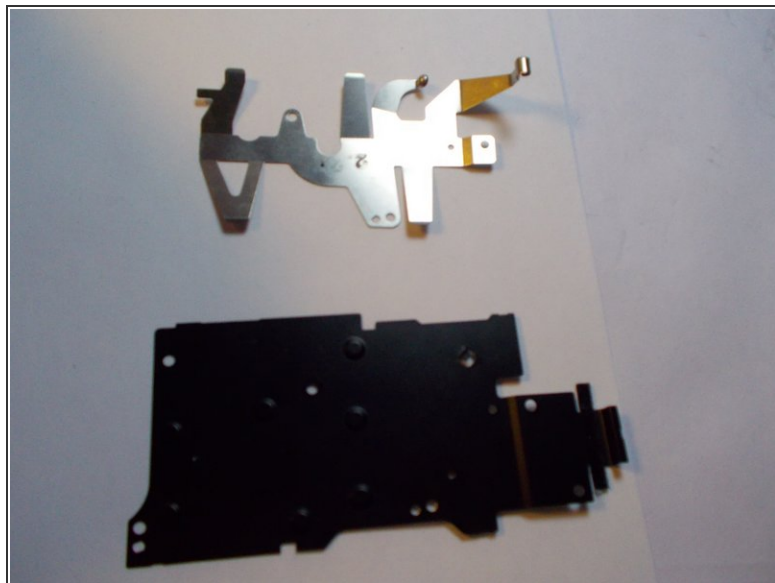
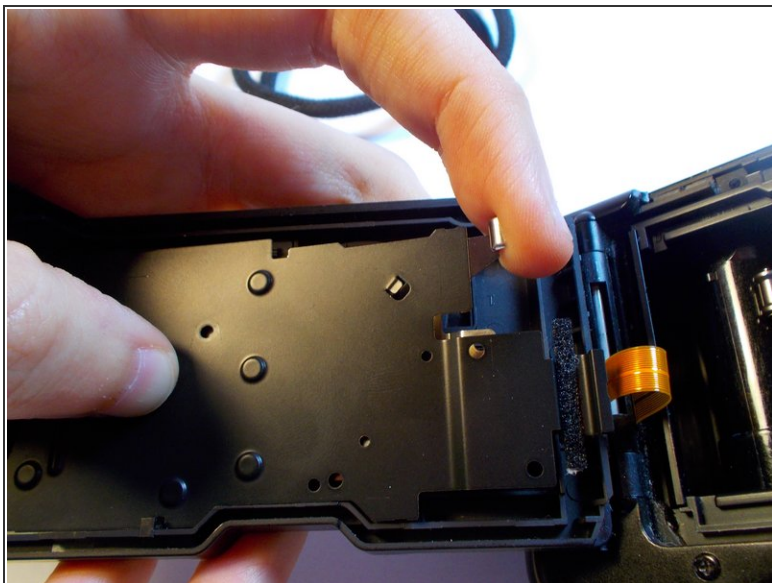
- Push down on the black switch located on the side of the camera. This will cause the back of the camera to pop open.

Step 2



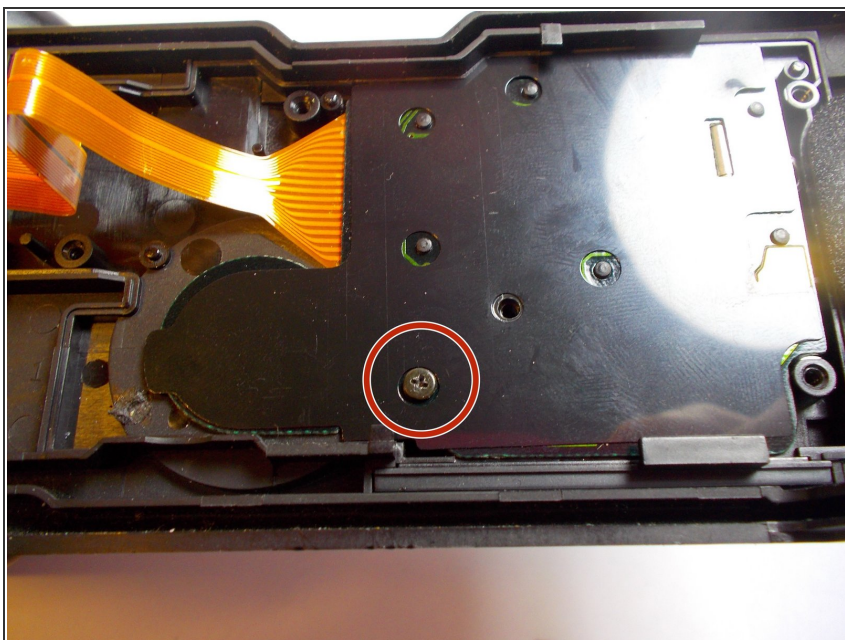
- Remove the five screws circled in red from the plastic on the back of the camera.

Step 3



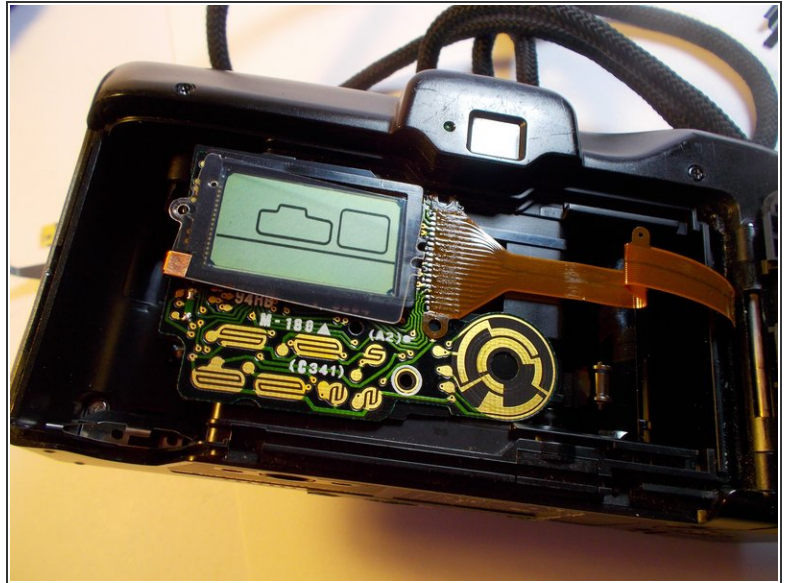
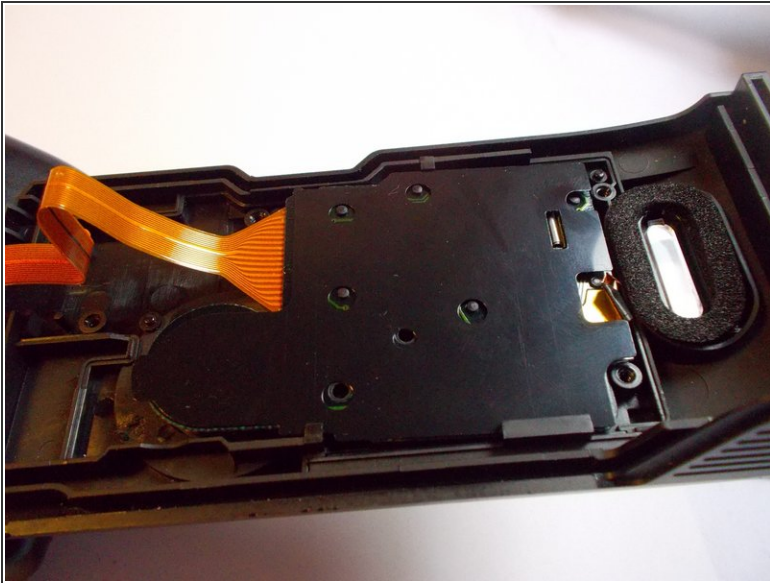
- Pull on the metallic piece that is sticking out from underneath the plastic. This will allow you to remove both the piece of black plastic and the metallic piece from the camera.

Step 4



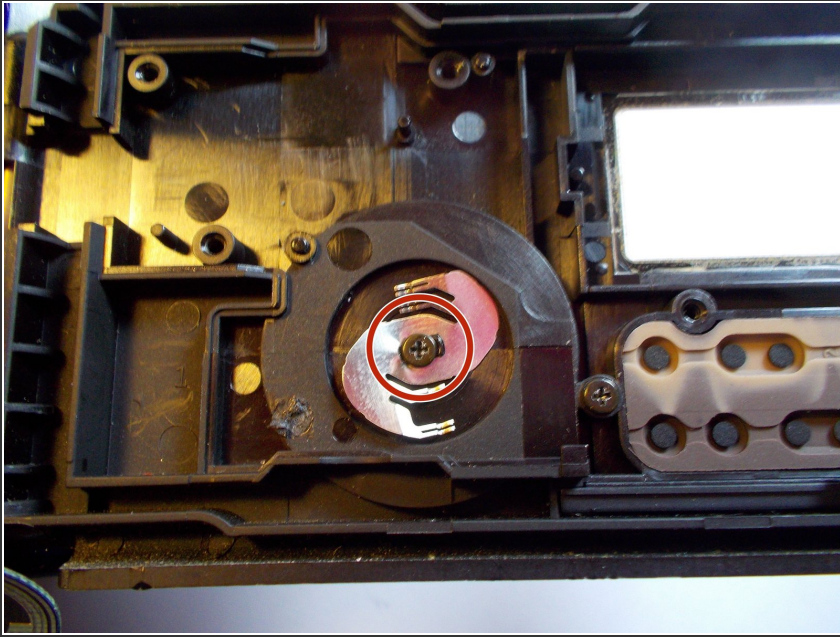
- You should now see the a strip of black plastic covering the back of the display's logic board. Remove the screw circled in red.

Step 5



- Pull on the orange cable connected to the logic board to lift the logic board out of place.
 - Move the logic board out of the way, as it is covering the screw that holds the wheel in place.
- ⚠ Make sure you are careful when moving the logic board. Try to avoid touching the top of the board if possible. Also make sure that if you put it down on top of something that the black plastic is still stuck to the bottom (as shown in the second picture).

Step 6



- Remove the screw that is circled in red. This is the screw that holds the mode selection wheel in place.
- ⓘ Make sure that you do not lose the metal piece that is located underneath the screw. You will need this to install the new wheel.

Step 7



- With the screw holding it in place removed, the mode selection wheel should come right off. Simply remove it from its socket.

Congratulations, you have successfully removed the mode selection wheel from your camera. To reassemble your device, follow these instructions in reverse order.

