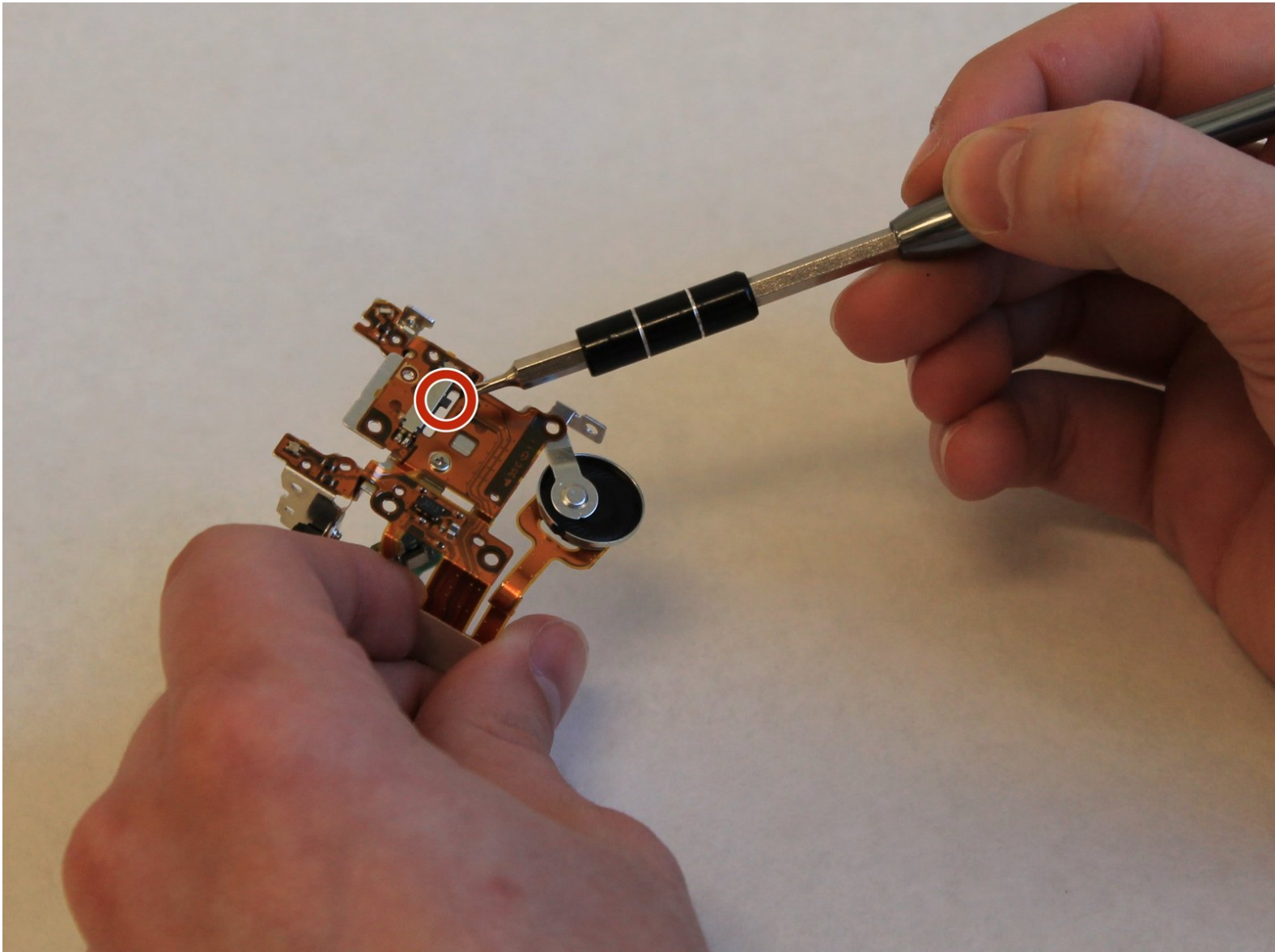




Canon Vixia HF R500 Zoom Control Replacement

Repair or replace components of manual zoom.

Written By: James Walker



INTRODUCTION

This guide will show you how to access the components of the manual zoom to repair or replace broken elements.



TOOLS:

- [Spudger](#) (1)
 - [Magnetic Project Mat](#) (1)
 - [Phillips #000 Screwdriver](#) (1)
-

Step 1 — Grip Belt



- On the right side of the camcorder remove the grip belt.

Step 2 — Battery



- Hold on to the battery.

Step 3



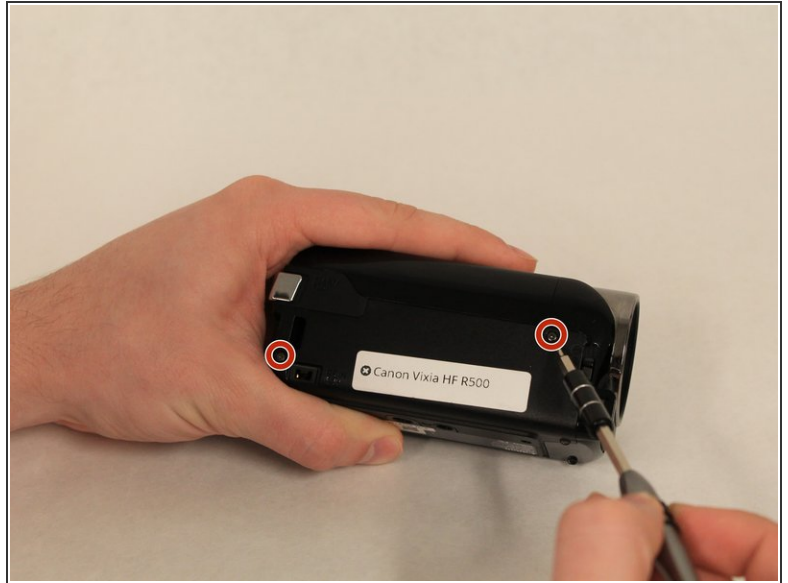
- On the bottom of the battery hold the battery release switch.

Step 4



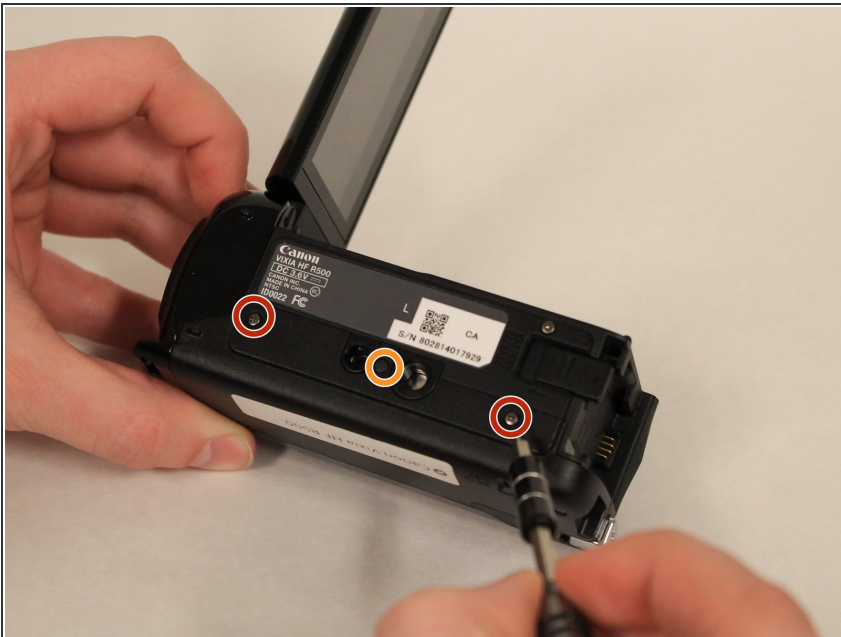
- Remove the battery slowly away from the camcorder.
- ⚠ Removing the battery quick or in a different angle may cause sparks and damage to device.

Step 5 — Canon Vixia HF R500 Disassembly



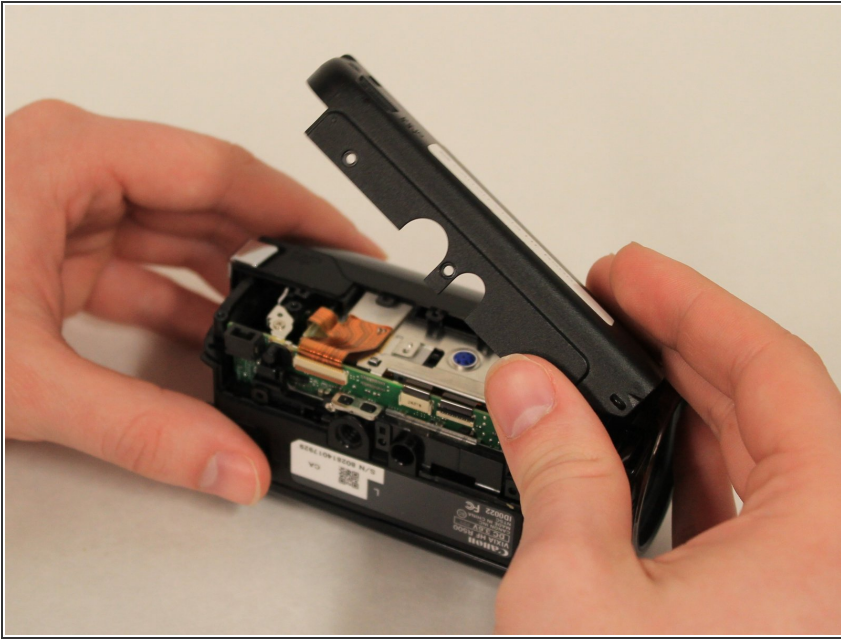
- Remove the two 8mm Philips #000 screws on the side where the grip belt was located on.

Step 6



- Remove the two 4mm Philips #000 head screws from the bottom of the camcorder.
- A hidden 4mm Philips #000 screw is shown under the black plug shown.

Step 7



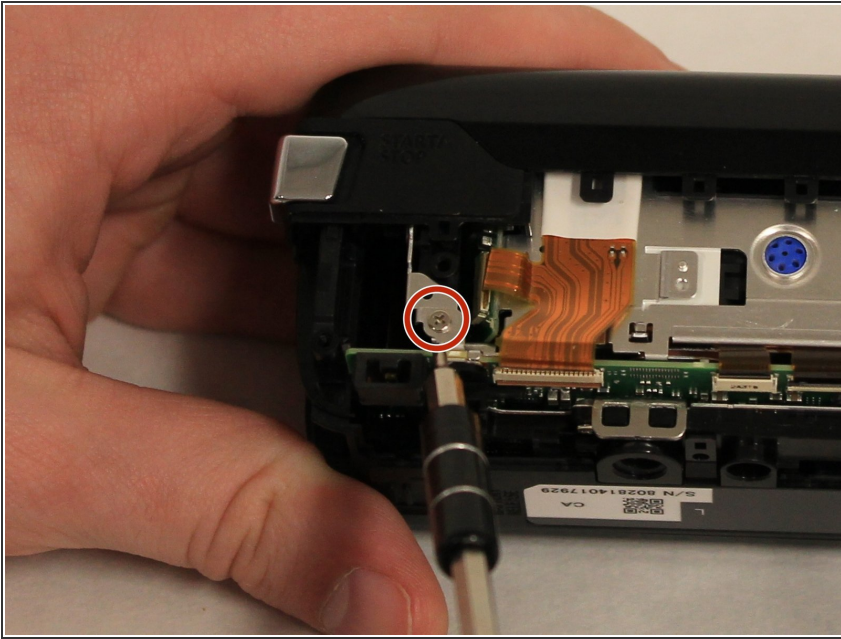
- Remove the side piece plate.

Step 8



- Near the LCD screen, remove the three 7mm Philips #000 screws in the picture shown.

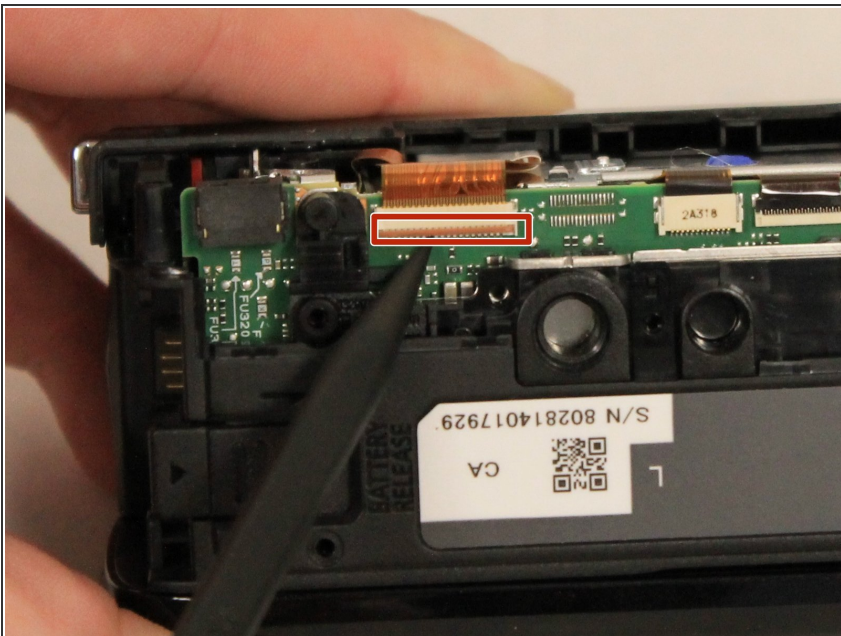
Step 9



- Carefully place the camcorder where the inside of the device is facing upwards and remove the 3mm Philips #000 screw shown.

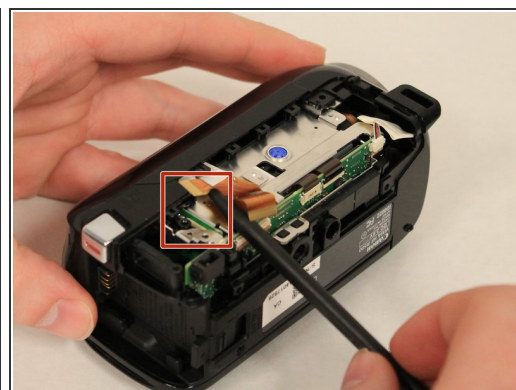
⚠ Do not use strong magnetic parts on the inside, as they may damage the device.

Step 10



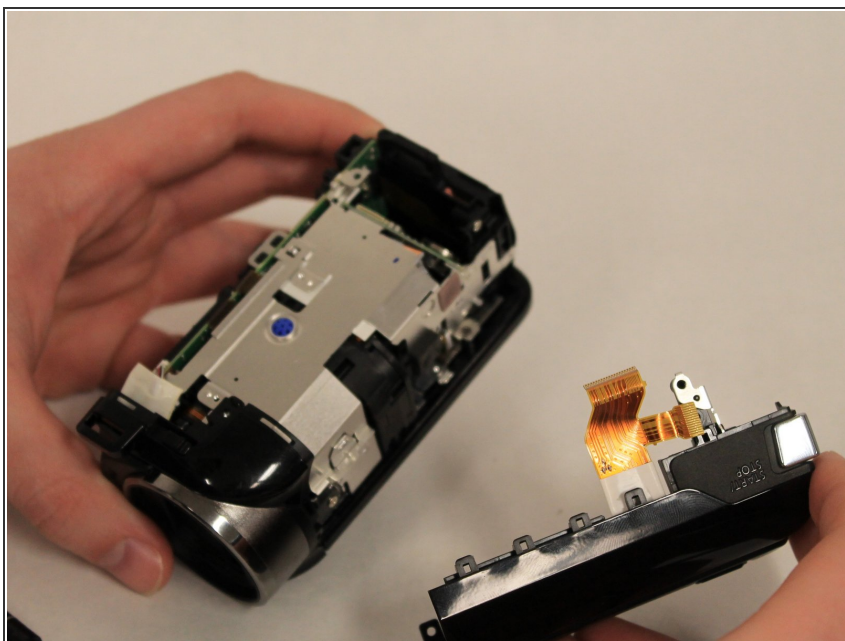
- Using the spudger, pull the tab shown to start removing the ribbon cable.

Step 11



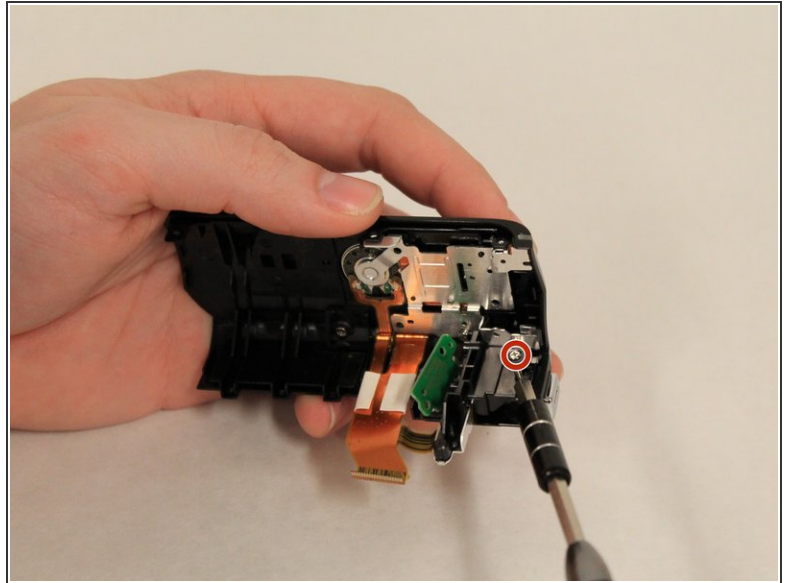
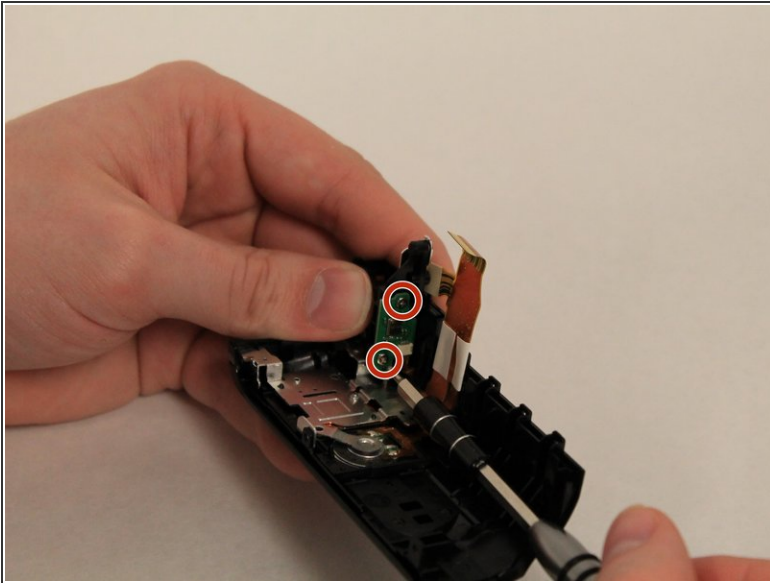
- Using the Spudger, carefully remove the two ribbon cables that are connected to the top of the device.

Step 12



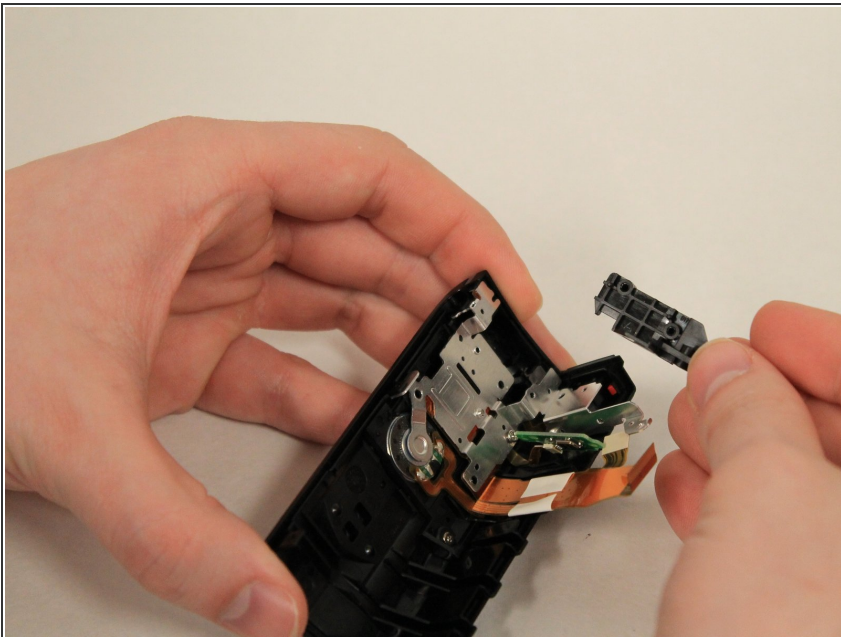
- Remove the top piece.

Step 13 — Speaker



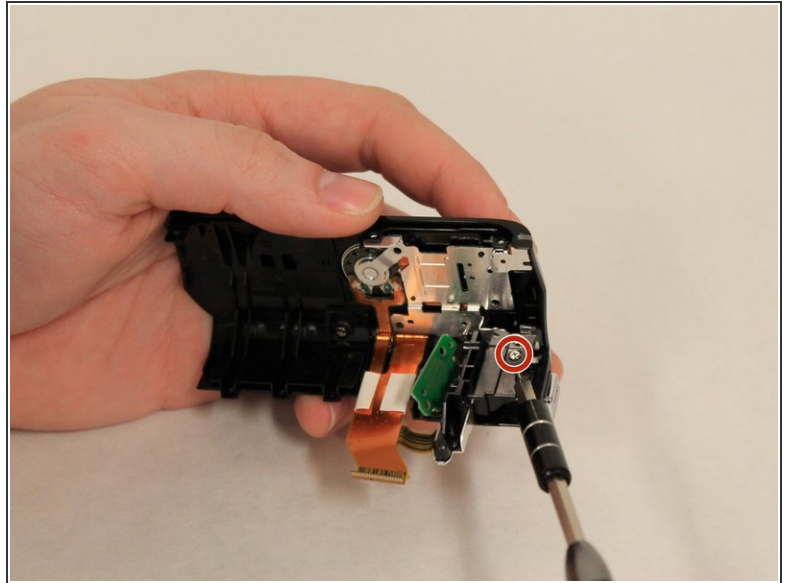
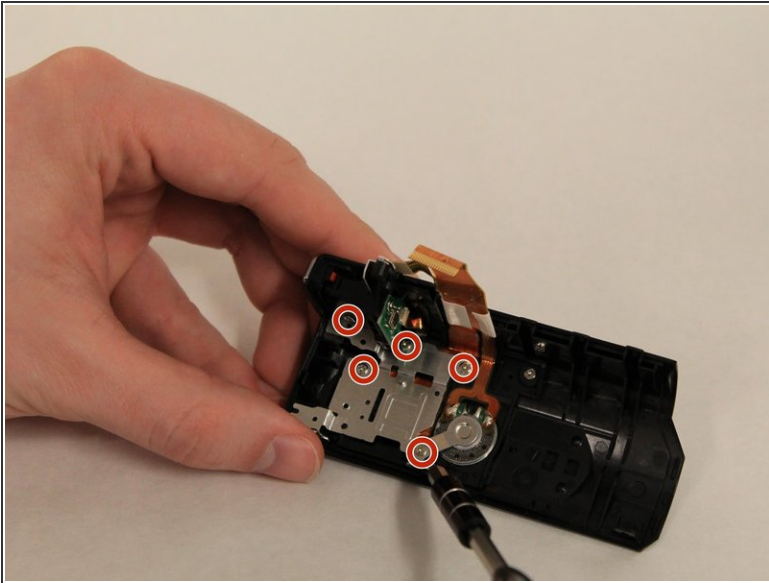
- Remove the three 6mm Philips #000 screws holding the black record piece.

Step 14



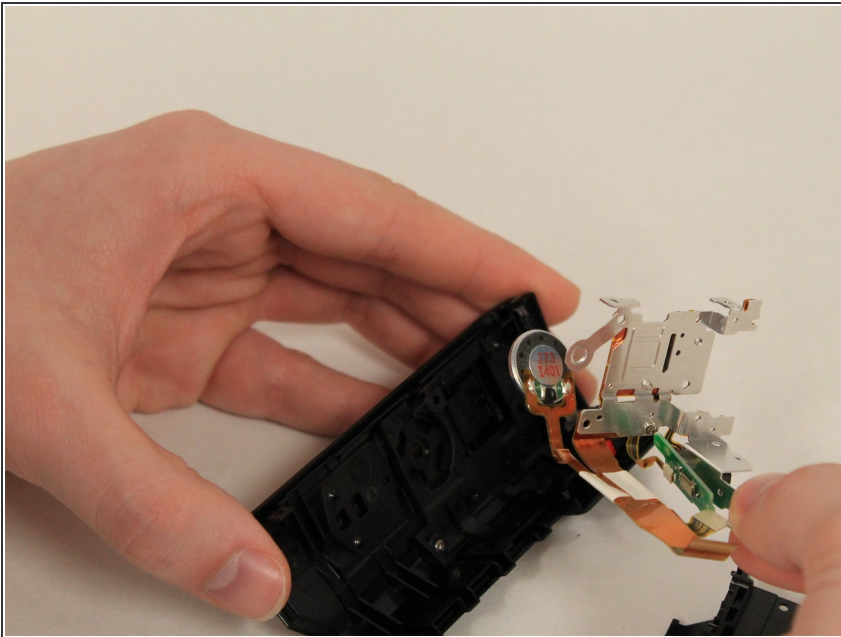
- Remove the black record piece.

Step 15



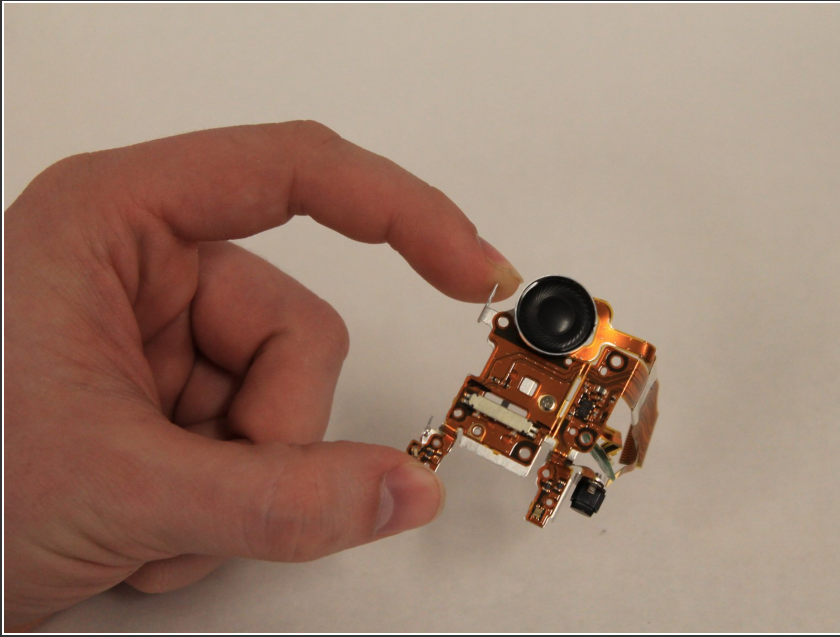
- Holding the full top piece remove the six 5mm Philips #000 screws holding the metal frame to the top piece.

Step 16



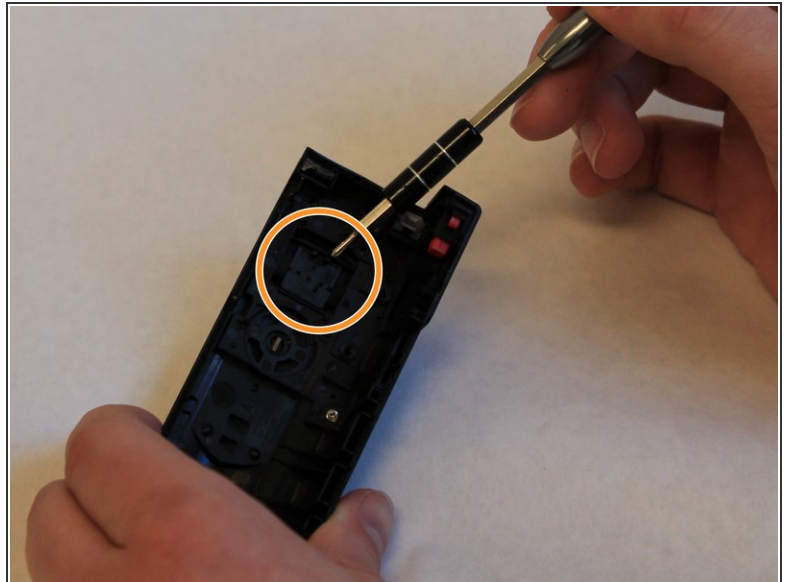
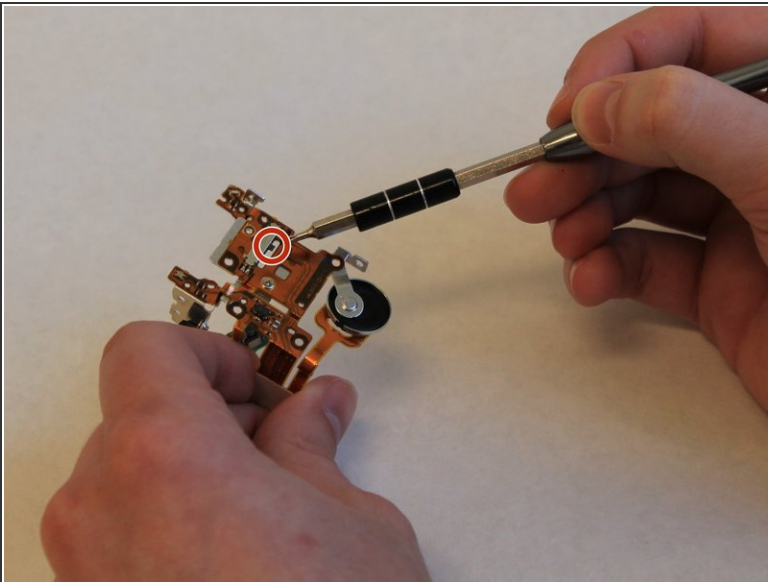
- Carefully remove the the whole metal frame out of the device piece.

Step 17



- Replace the defective speaker with a functioning one.

Step 18 — Zoom Control



- Examine the grey zoom input tab located on copper plate.
- Examine the black plastic zoom slider, on the top cover of the camera
- Repair or replace damaged components and clear all debris from mechanisms.

To reassemble your device, follow these instructions in reverse order.