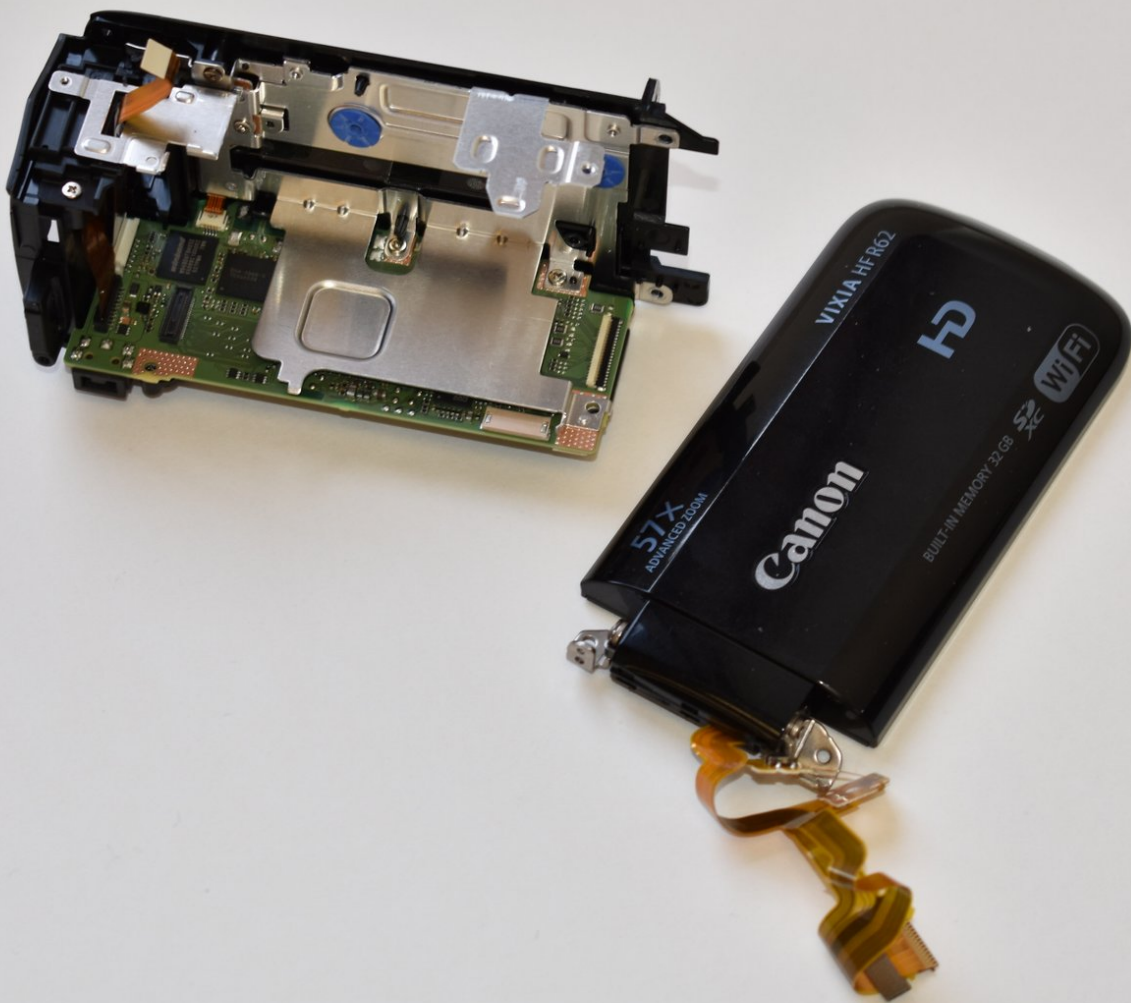




# Canon Vixia HF R62 Display Panel Replacement

Replace the LCD display panel of your Canon Vixia HF R62 camcorder.

Written By: Patrick Bennett



# INTRODUCTION

This guide will show you how to remove and replace the LCD display panel of the Vixia HF R62.

---

## TOOLS:

- [Phillips #000 Screwdriver](#) (1)
  - [Tweezers](#) (1)
  - [Spudger](#) (1)
-

## Step 1 — Outer Shell



- Remove the strap by undoing the Velcro and pulling it through the thread points.
- Remove the external battery pack by pressing down on the slide release and sliding it out.

## Step 2



- Remove the three 5mm Phillips #000 screws on the bottom of the device.

### Step 3



- On the side of the device, remove the following Phillips #000 screws:
  - One 3mm screw
  - One 5mm screw

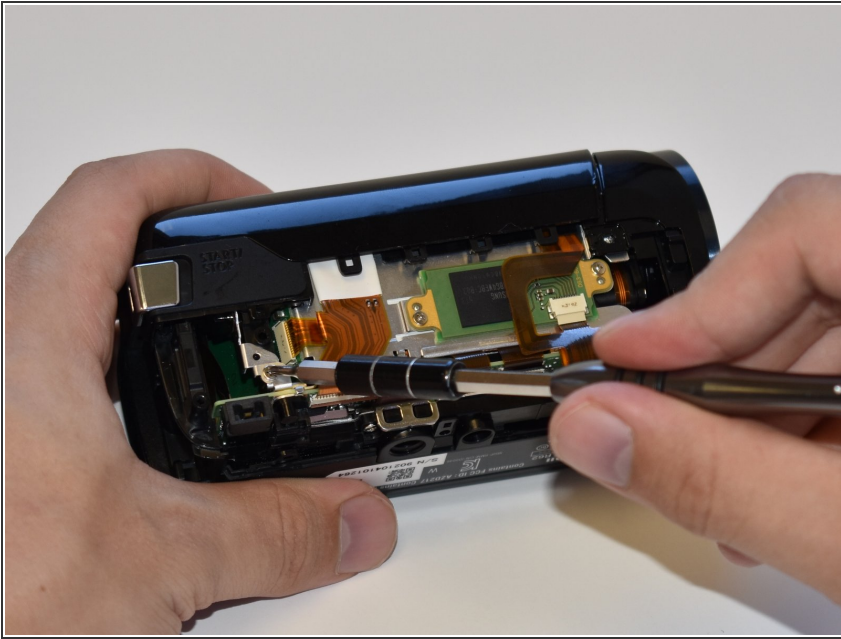
### Step 4



- Remove the panel opposite the display by pulling up perpendicular to the side.



## Step 5



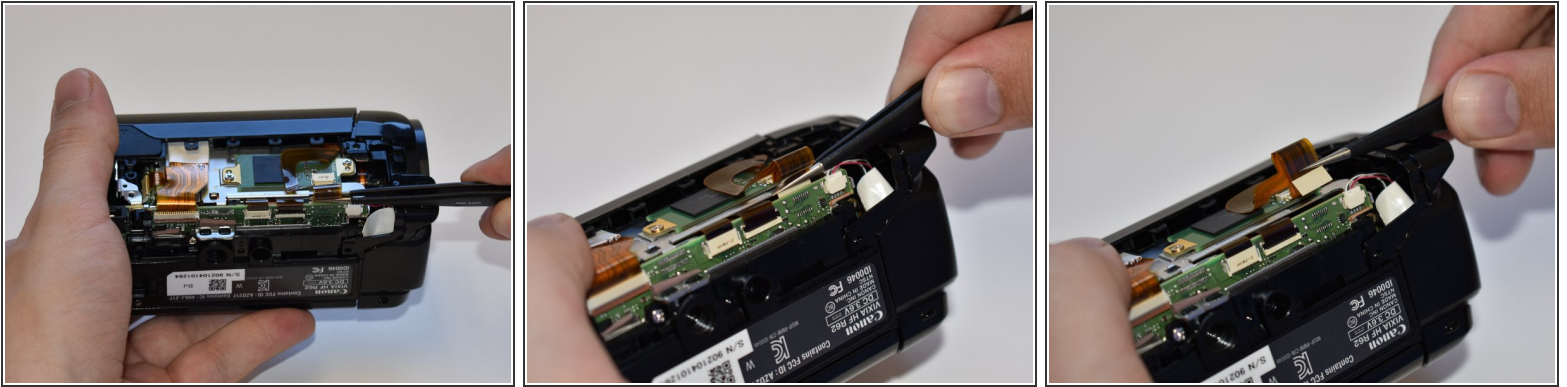
- Remove the 4mm Phillips #000 screw that was exposed after taking off the side panel.

## Step 6



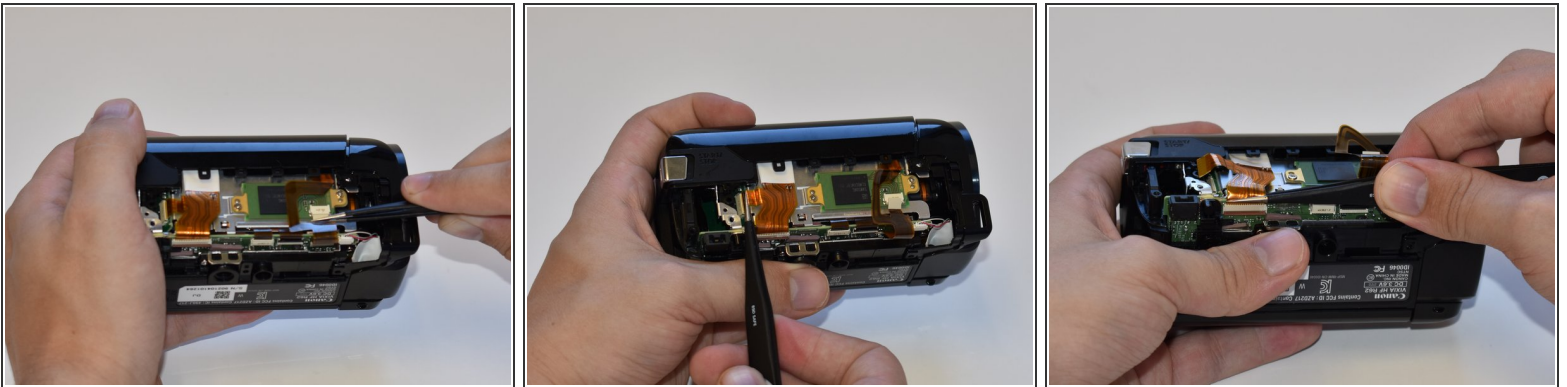
- Remove the three 4mm Phillips #000 screws shown.
- ⓘ There will be foam covers protecting some or all of these screws. These will need to be removed before you will be able to unscrew them.

## Step 7



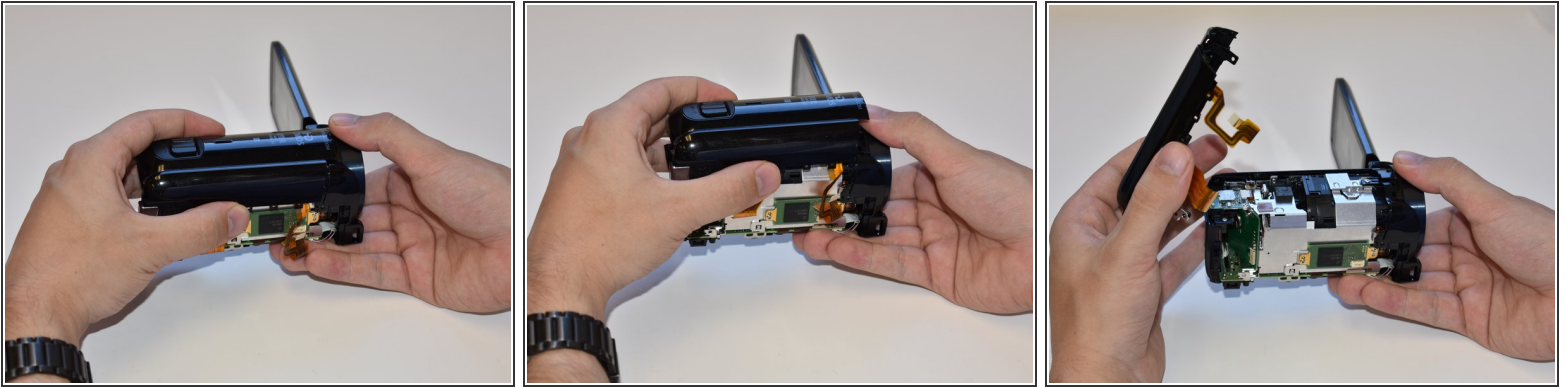
- Using tweezers, disconnect this ribbon cable by pulling straight out.

## Step 8



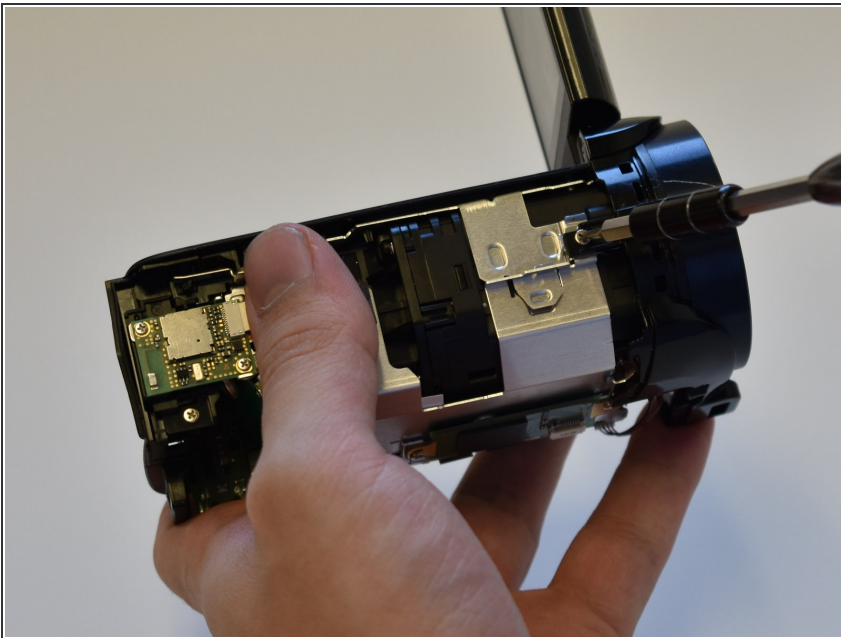
- Repeat step seven (7) for the remaining three wires shown.

## Step 9



- Grasp the top of the camera and pull straight up to remove the top panel.

## Step 10 — Lens



- Remove the 5mm Phillips #000 screw on top of the inner case.

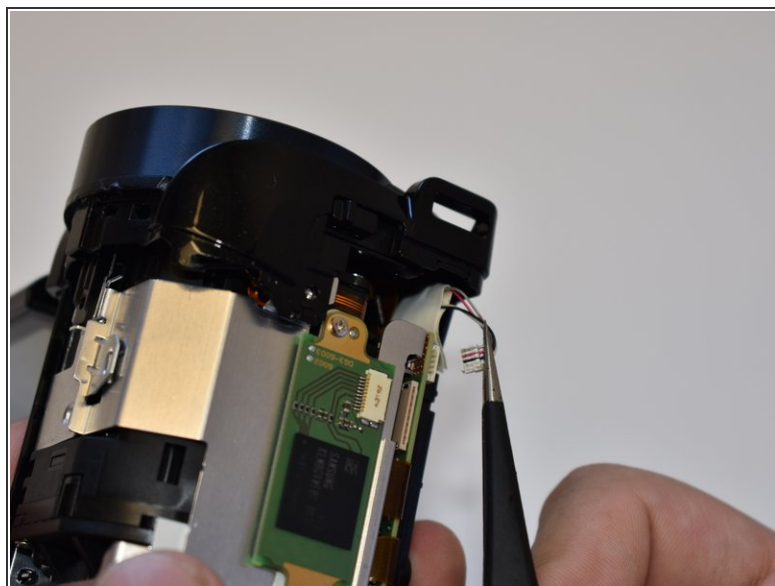
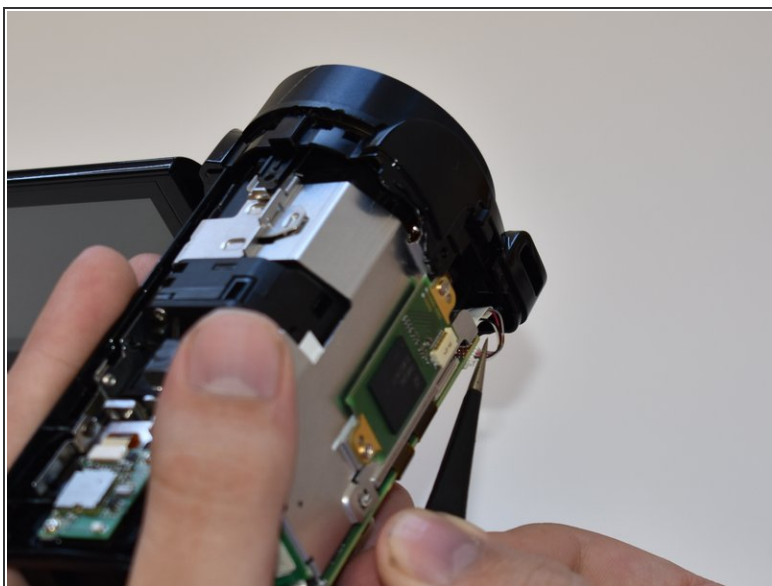


## Step 11



- Remove the two 5mm Phillips #000 screws near the display panel.

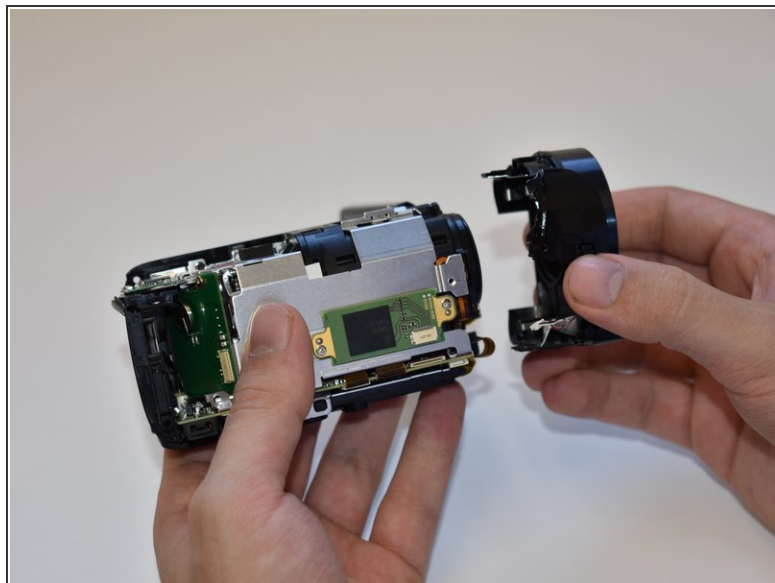
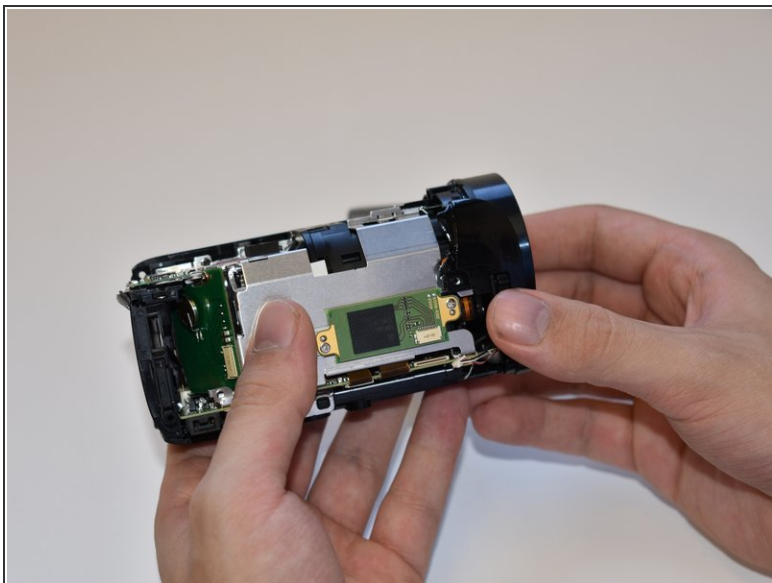
## Step 12



- Disconnect the small bundled cable connector on the side of the lens cover by pulling it straight out.



## Step 13



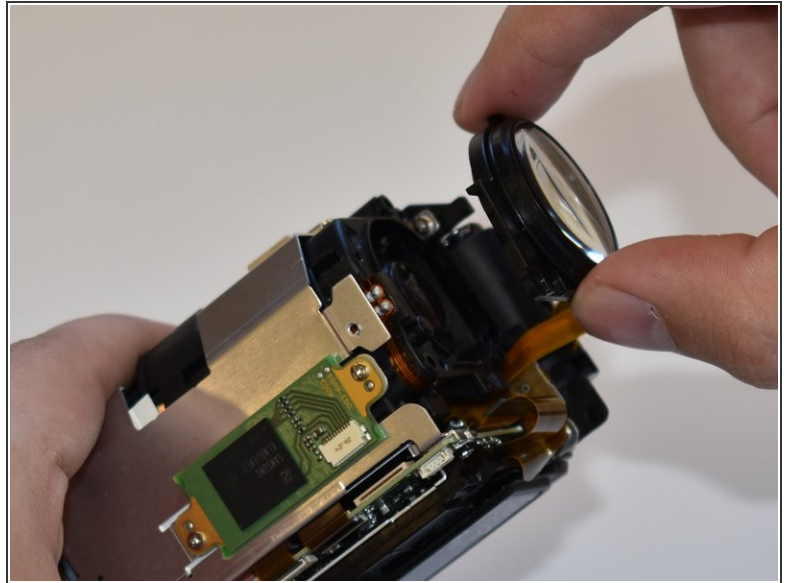
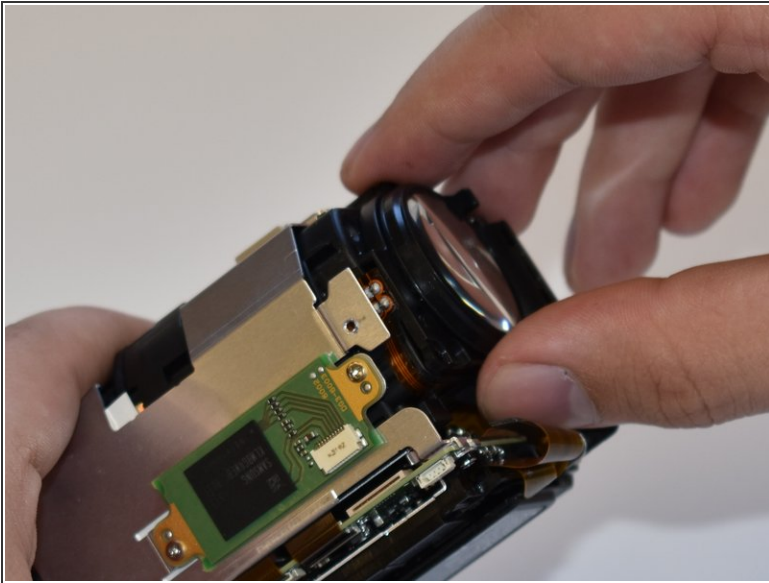
- Remove the lens cover by pulling straight away from the body.

## Step 14



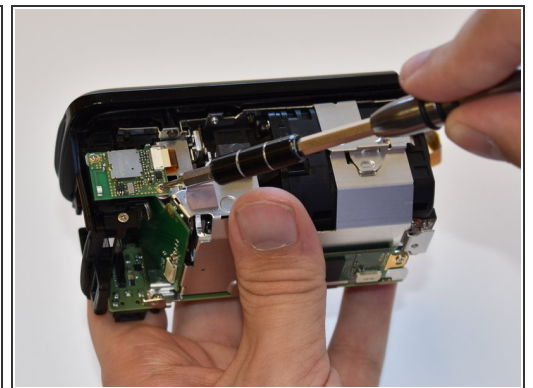
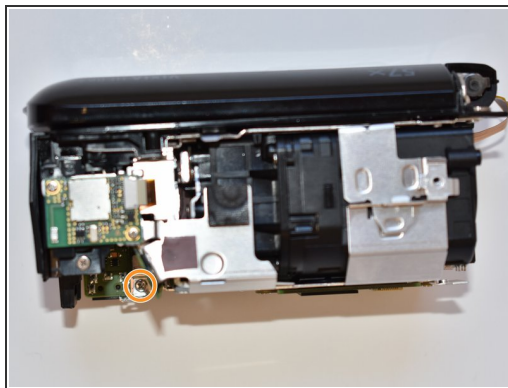
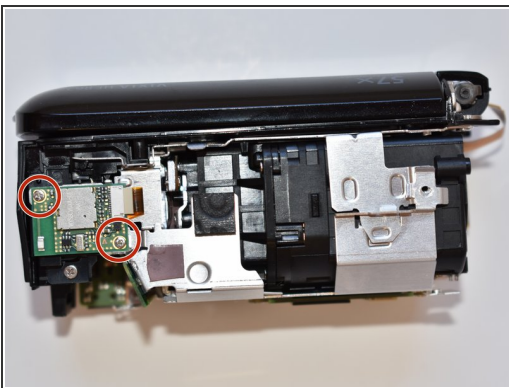
- Remove the three 6mm Phillips #000 screws shown.

## Step 15



- Remove the lens by pulling straight away from the main body.
- ⓘ Be aware of the small rubber gasket around the lens as it may come loose.

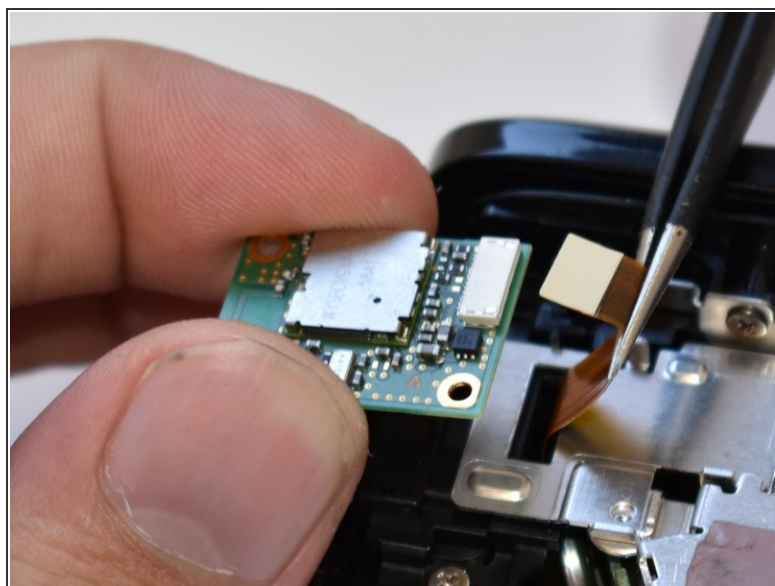
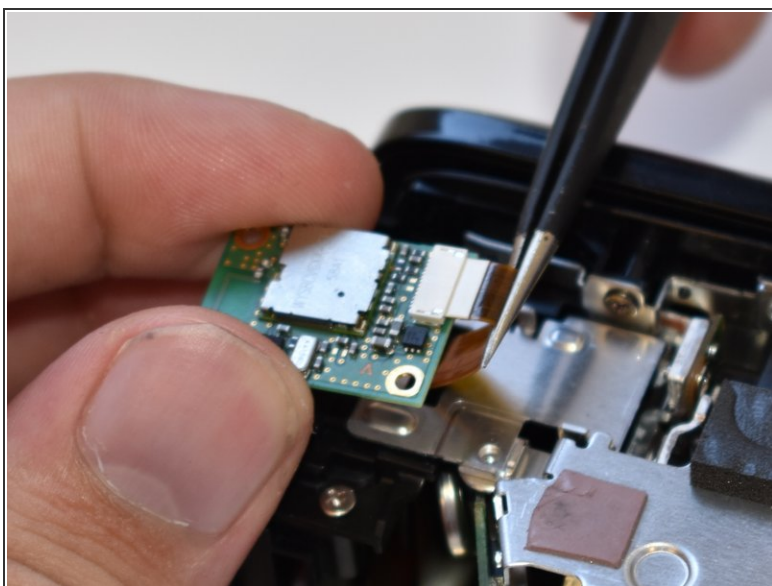
## Step 16 — Internal Battery and SD Card Reader



- Remove the two 3mm Phillips #000 screws.
- Remove the 4mm Phillips #000 screw.

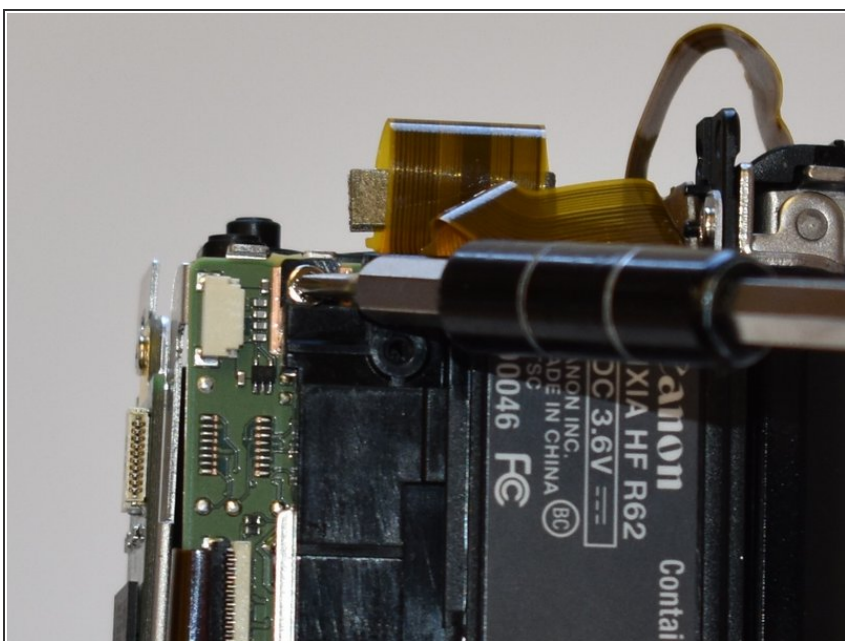


## Step 17



- Disconnect the ribbon cable shown.

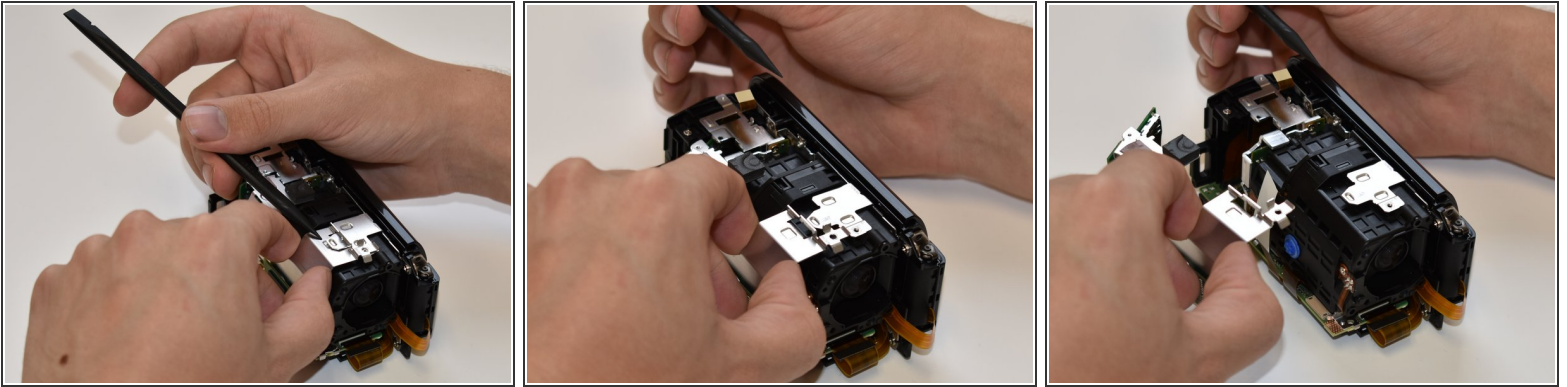
## Step 18



- Remove the 4mm Phillips #000 screw at the bottom of the camera.

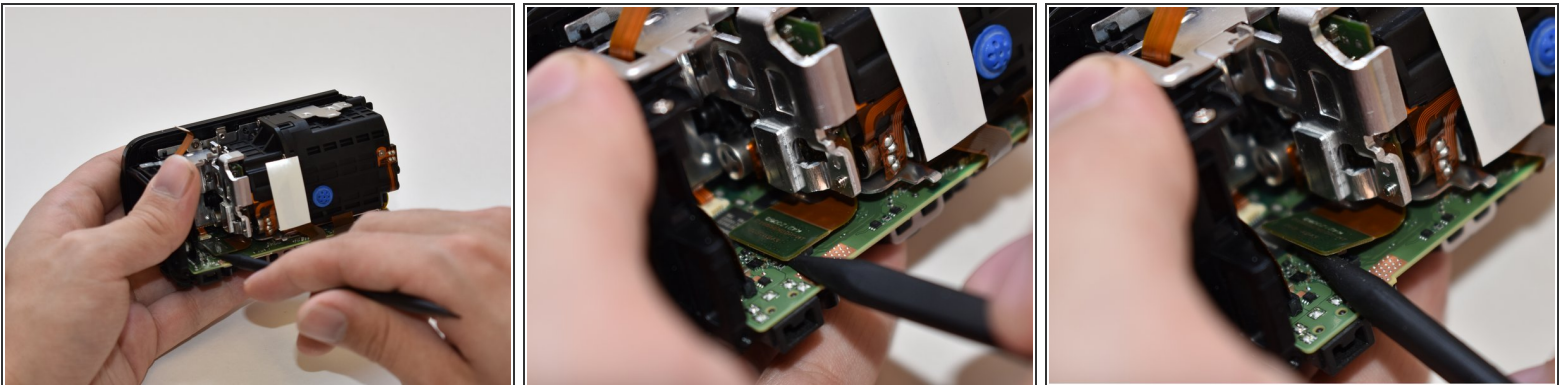


## Step 19



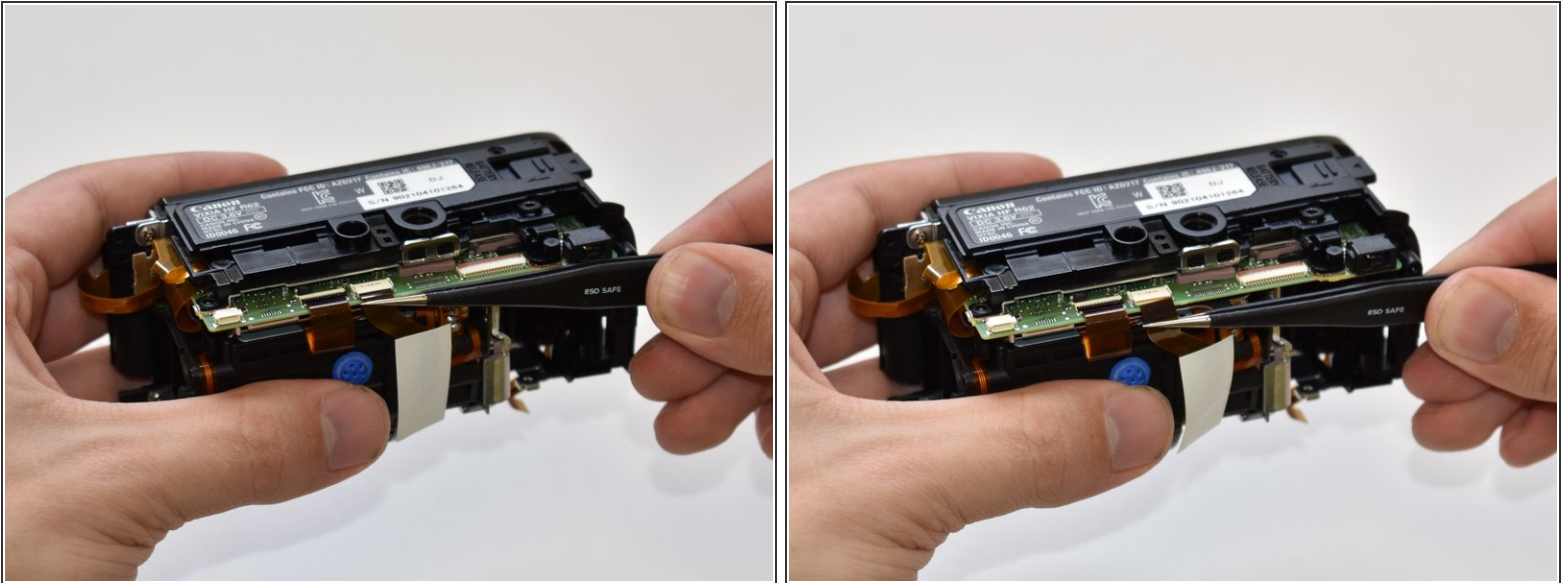
- Place the spudger under the tab shown.
- While prying the tab up with the spudger, pull the case away.

## Step 20 — Central Capturing Unit



- Using a spudger, disconnect the ribbon cable connector from the PC board shown in the picture.

## Step 21



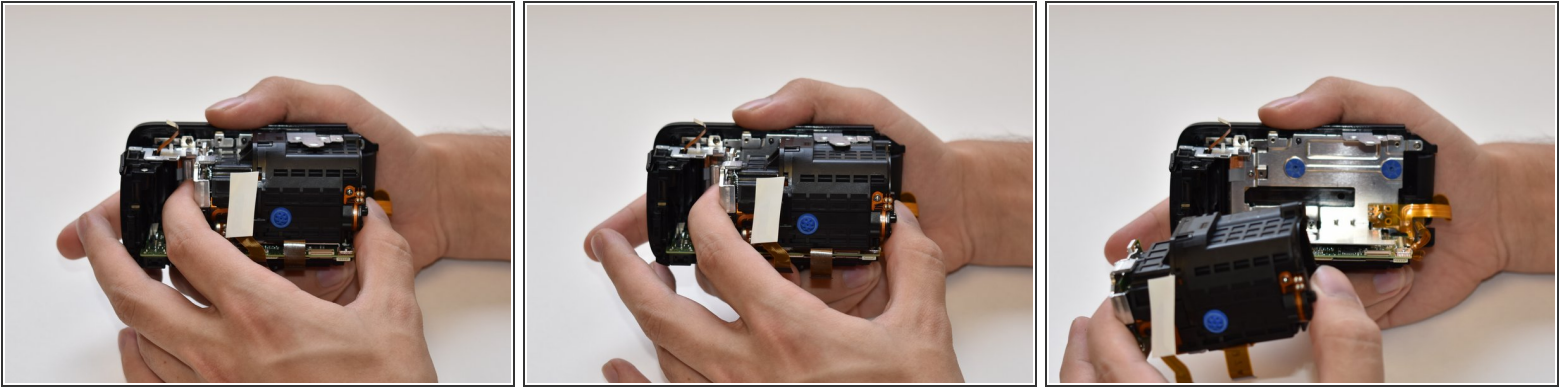
- Using tweezers, disconnect the ribbon cable shown in the picture by pulling straight out.

## Step 22



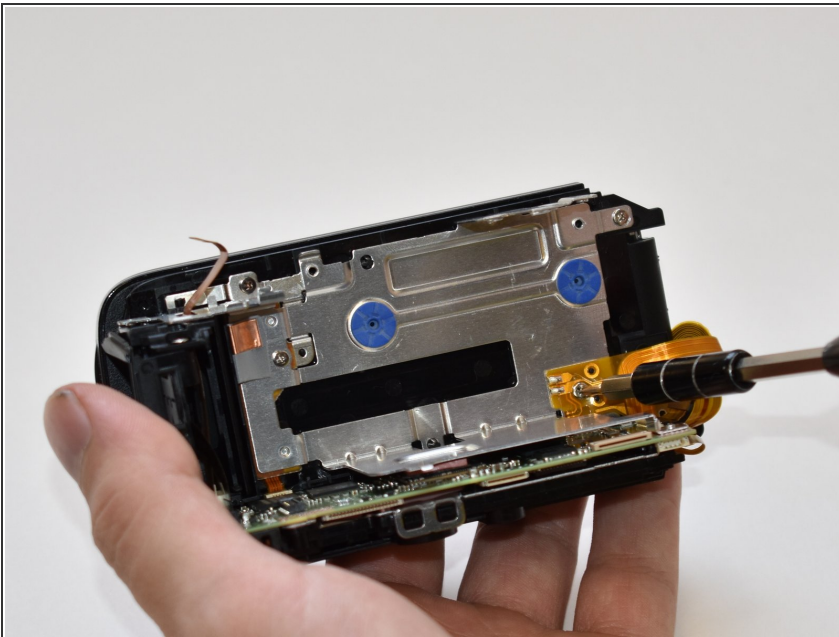
- Using a spudger, gently pry up the top tab on the ZIF connector. The wire will now disconnect with no force needed.
- ☑ When reassembling you will need to place the ribbon wire tightly against the tab in order to properly secure it.

## Step 23



- Using your fingers, firmly grasp both ends of the capturing device and gently pull the assembly straight out.

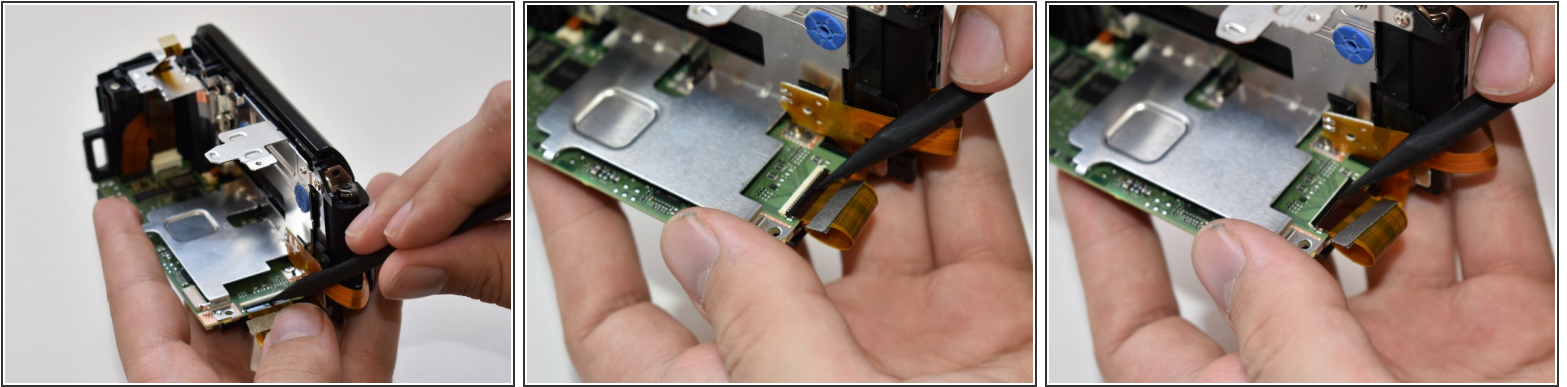
## Step 24 — Display Panel



- Remove the 3mm Phillips #000 screw holding the display's ribbon wire to the casing.

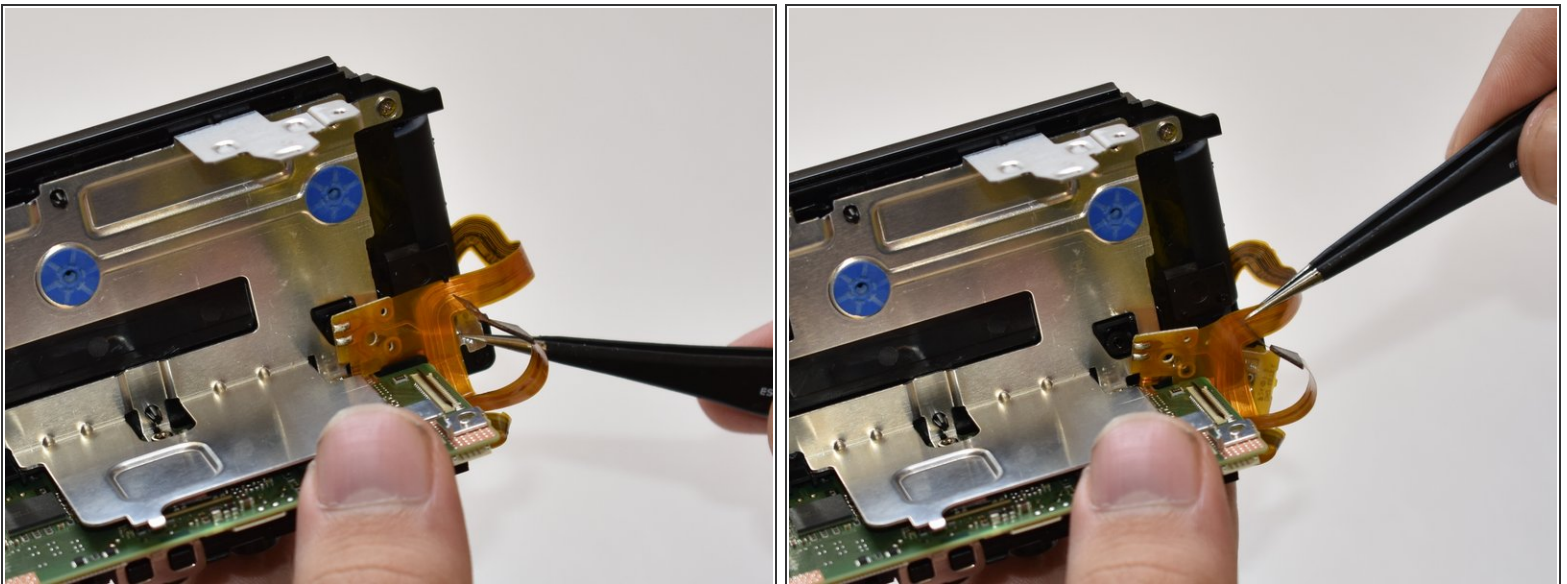


## Step 25



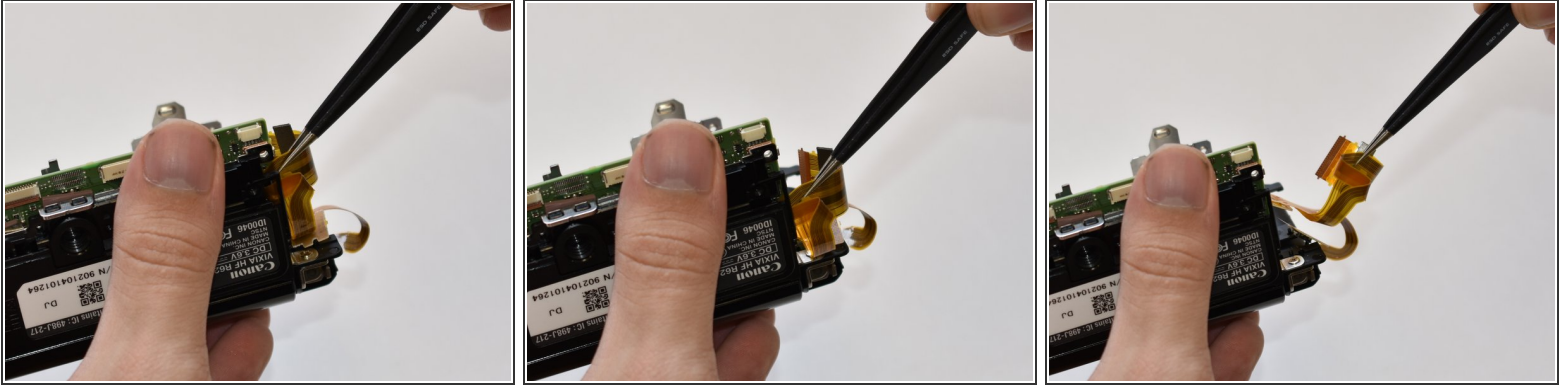
- Undo the ZIF connector from the motherboard using a plastic spudger. Use the spudger to pry the small tab on top of the ZIF connector and the ribbon cable will fall free.
- ☑ When reassembling, you will need to place the ribbon cable tightly against the tab in order to properly secure it.

## Step 26



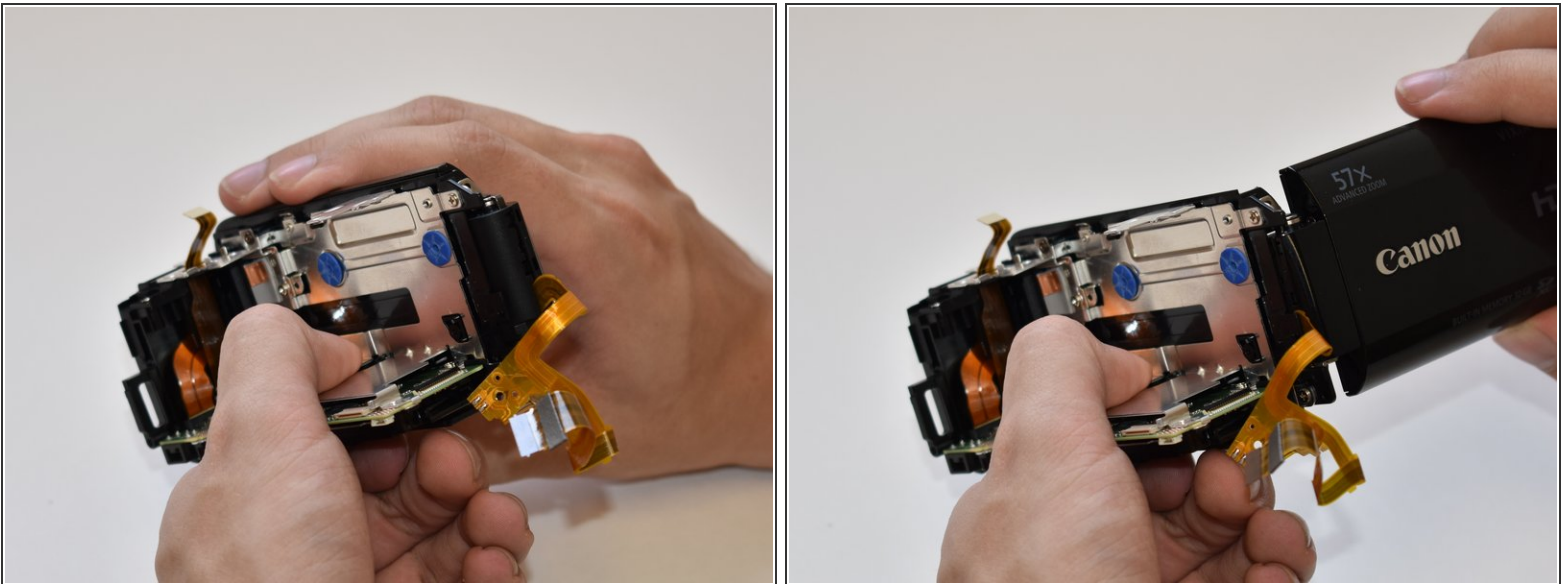
- There is a small component of the ribbon cable clipped to the casing. Remove this by pulling it away from the casing with tweezers.
- ⓘ Some of the ribbon may become entangled in the clips that held the component. Ensure they are untangled before the display is removed to avoid damage.


## Step 27



- The ribbon cable is also looped around a piece of the casing under the motherboard. Unfasten this cable with tweezers by sliding down and then pulling out.

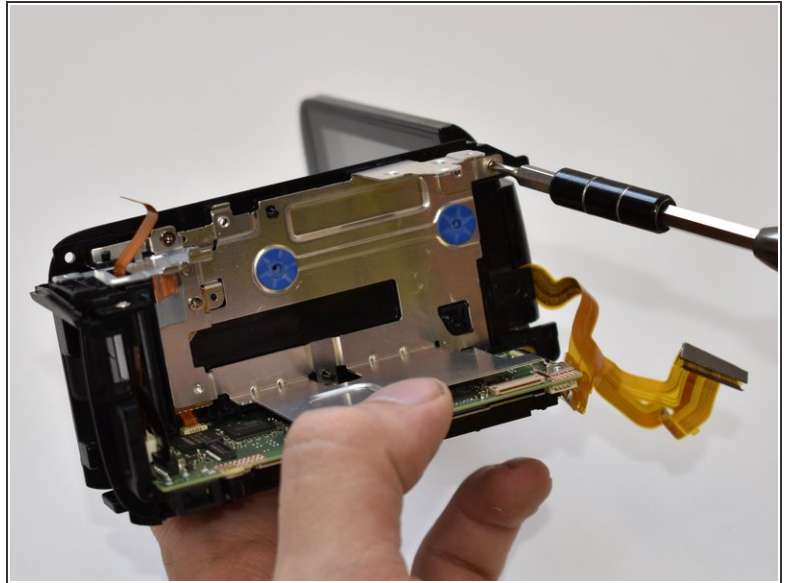
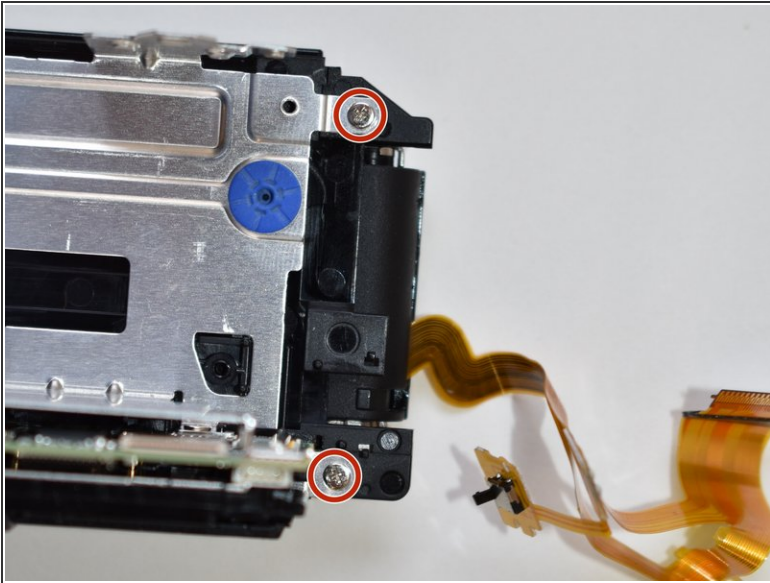
## Step 28



- Open the display panel.
-  This will help during the reassembly as one of the hinges locks in place and is difficult to reassemble if in the closed position.

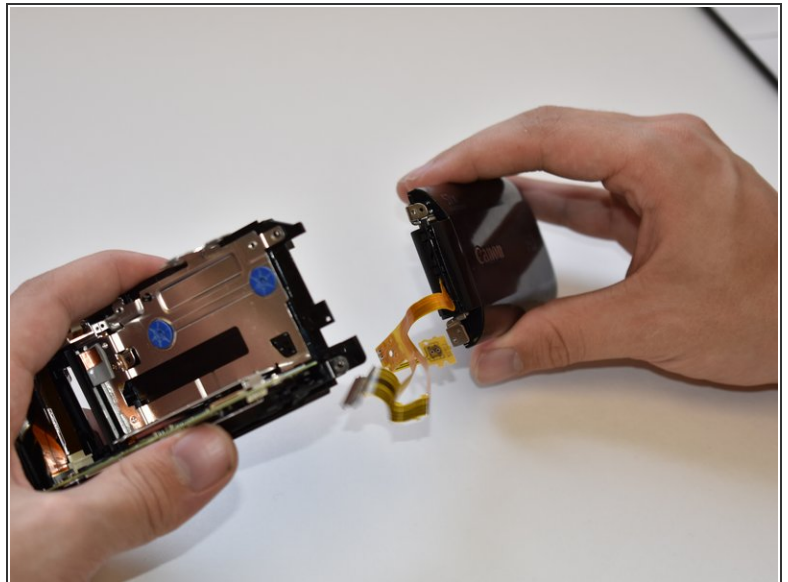
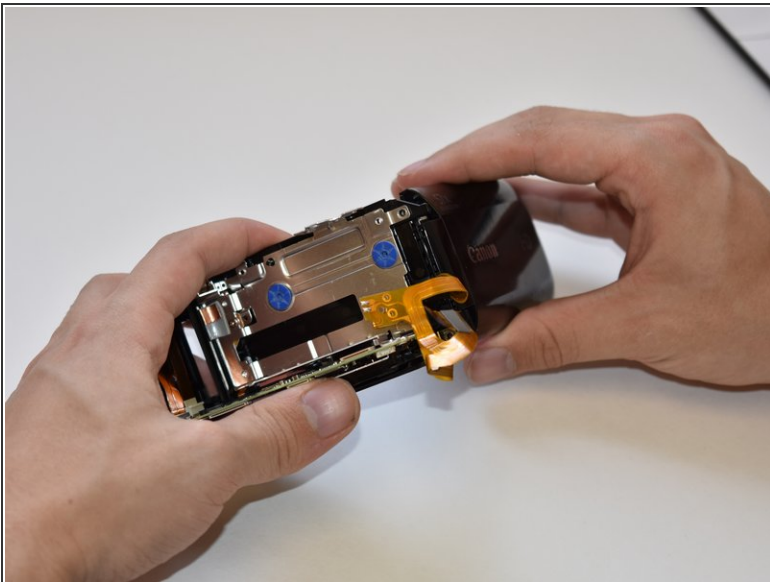


## Step 29



- Remove the two 3mm Phillips #000 screws connecting to the display panel's hinges.

## Step 30



- Remove the display panel by pulling the display straight away from the body.

To reassemble your device, follow these instructions in reverse order.