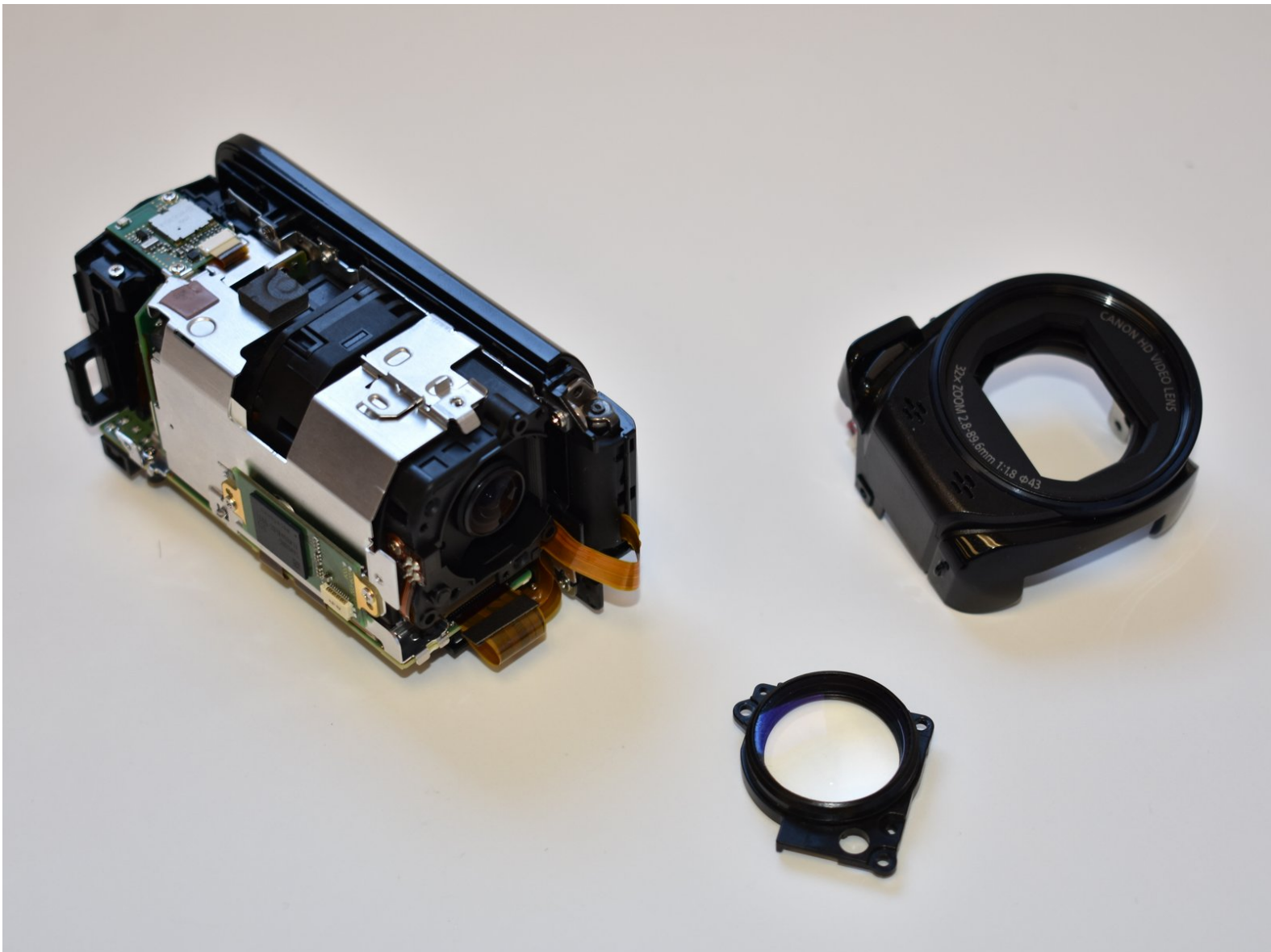




# Canon Vixia HF R62 Lens Replacement

Replace the lens and lens cover of your Canon Vixia HF R62 Camcorder.

Written By: Patrick Bennett



---

## INTRODUCTION

This guide will show you how to access and replace the lens of the camcorder. It will also act as a prerequisite to most of the internal components.

---



### TOOLS:

- [Phillips #000 Screwdriver](#) (1)
  - [Tweezers](#) (1)
-

## Step 1 — Outer Shell



- Remove the strap by undoing the Velcro and pulling it through the thread points.
- Remove the external battery pack by pressing down on the slide release and sliding it out.

## Step 2



- Remove the three 5mm Phillips #000 screws on the bottom of the device.

### Step 3



- On the side of the device, remove the following Phillips #000 screws:
  - One 3mm screw
  - One 5mm screw

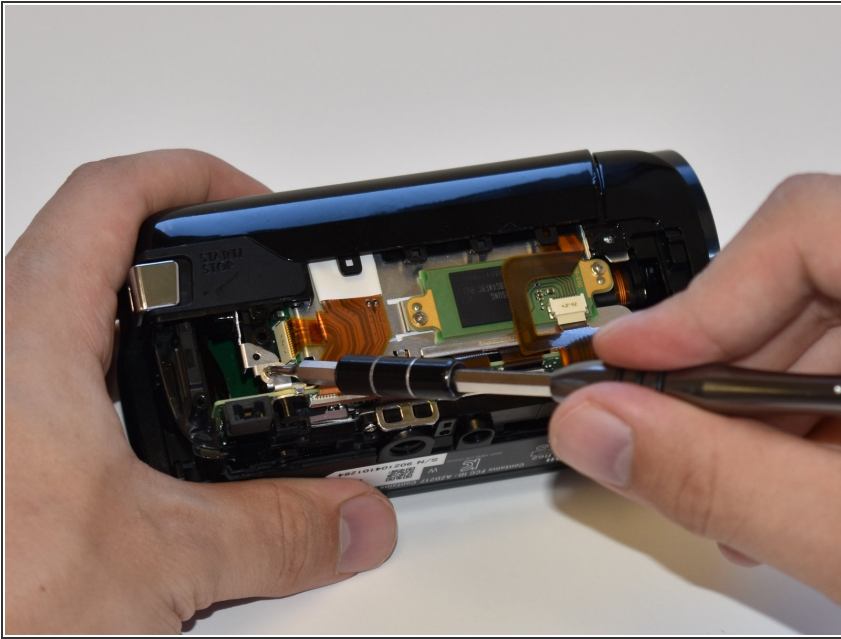
### Step 4



- Remove the panel opposite the display by pulling up perpendicular to the side.



## Step 5



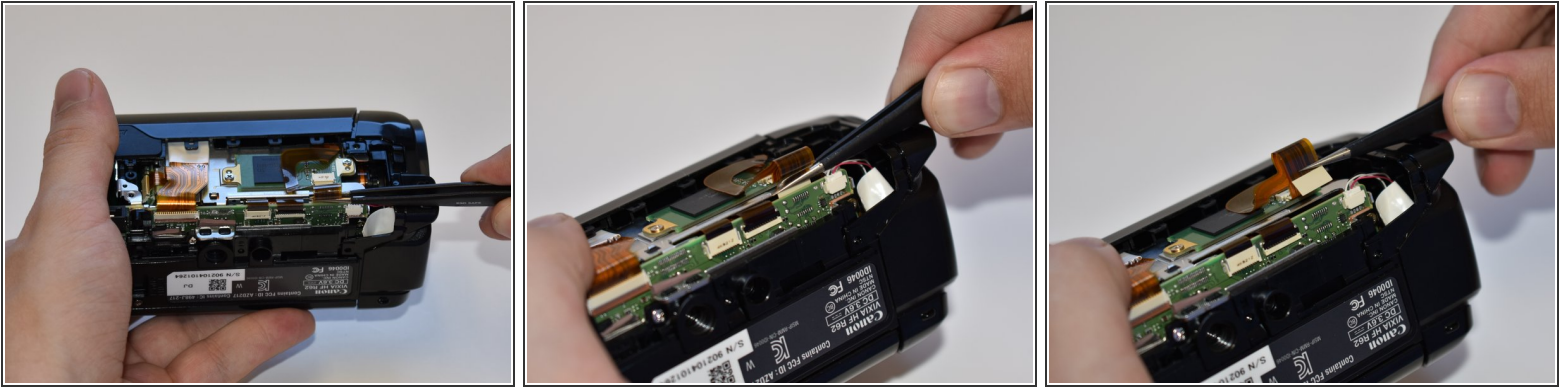
- Remove the 4mm Phillips #000 screw that was exposed after taking off the side panel.

## Step 6



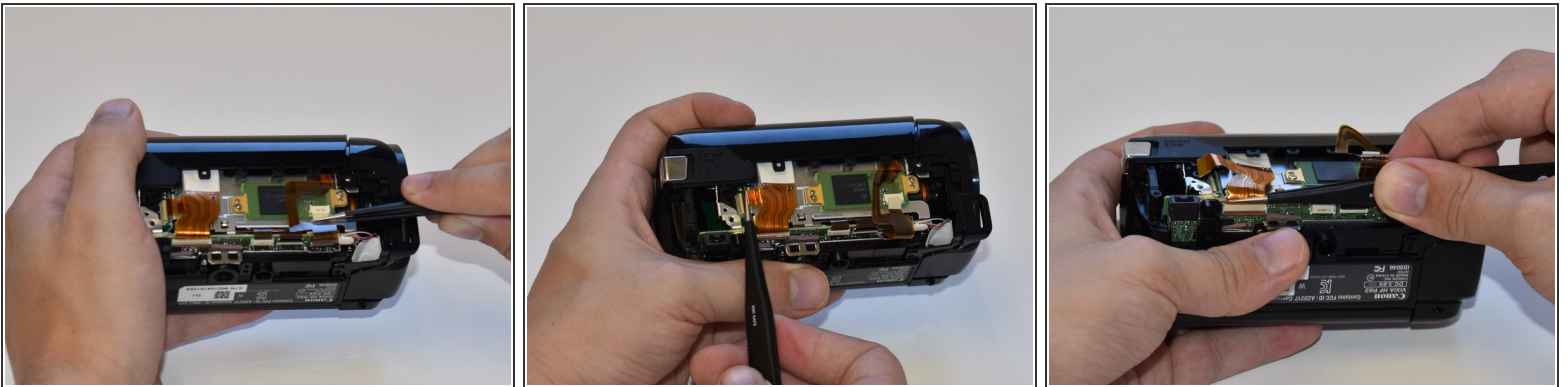
- Remove the three 4mm Phillips #000 screws shown.
- ⓘ There will be foam covers protecting some or all of these screws. These will need to be removed before you will be able to unscrew them.

## Step 7



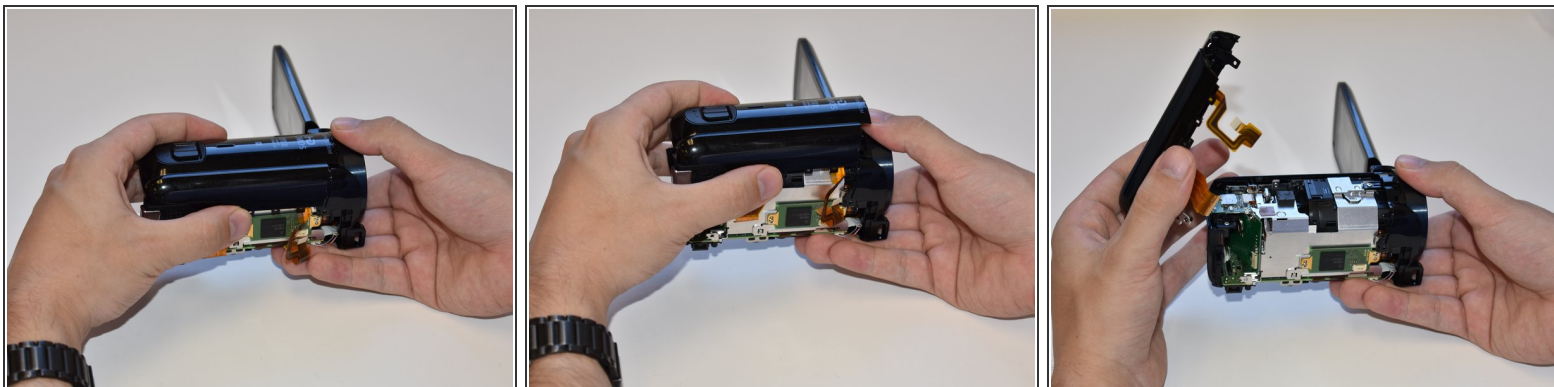
- Using tweezers, disconnect this ribbon cable by pulling straight out.

## Step 8



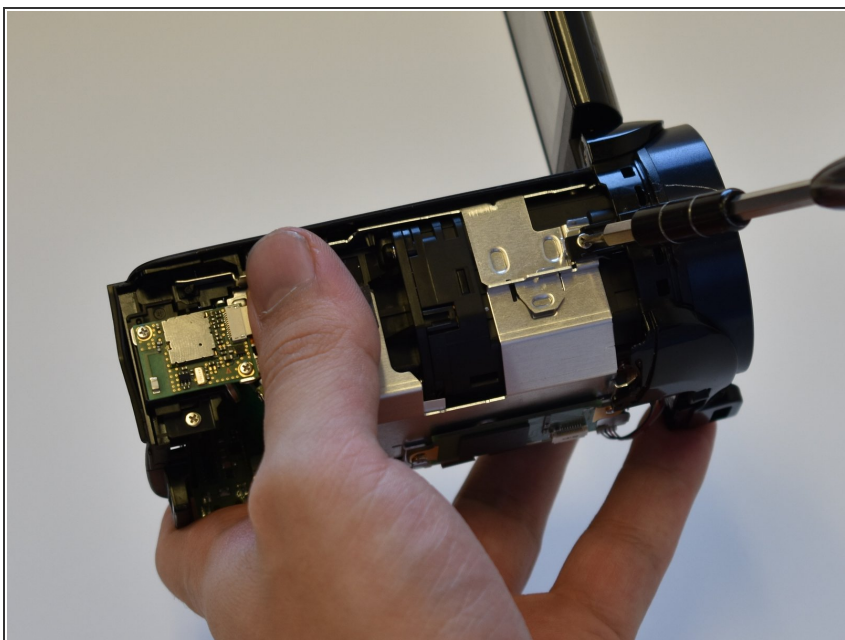
- Repeat step seven (7) for the remaining three wires shown.

## Step 9



- Grasp the top of the camera and pull straight up to remove the top panel.

## Step 10 — Lens



- Remove the 5mm Phillips #000 screw on top of the inner case.

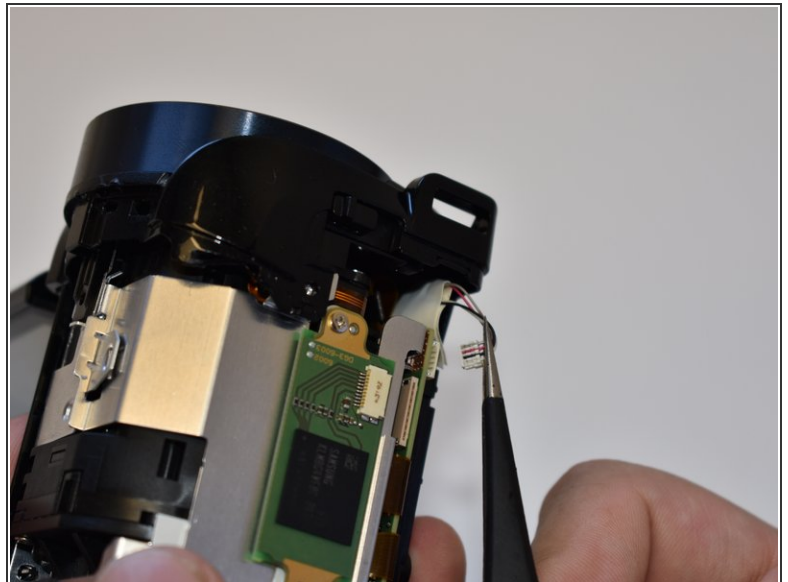
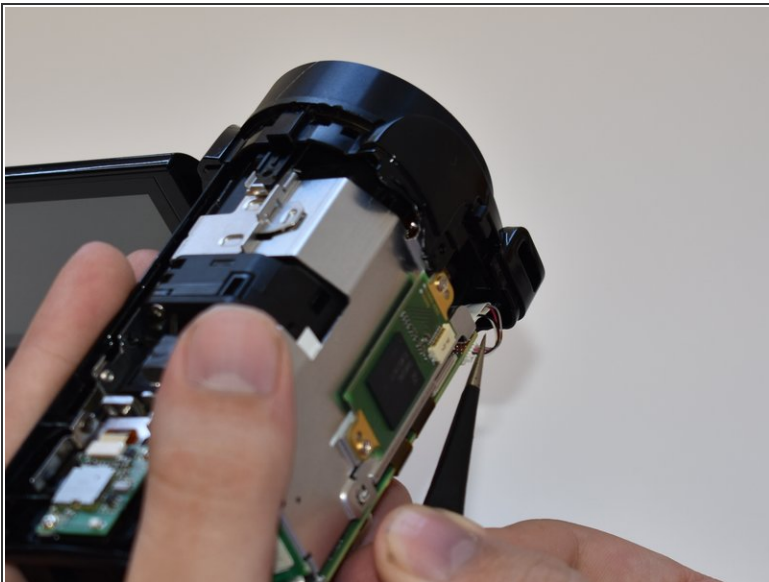


## Step 11



- Remove the two 5mm Phillips #000 screws near the display panel.

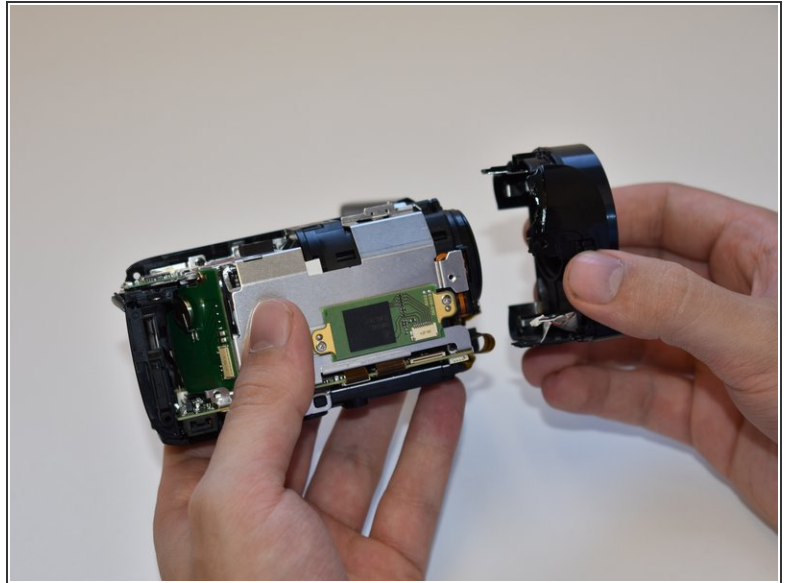
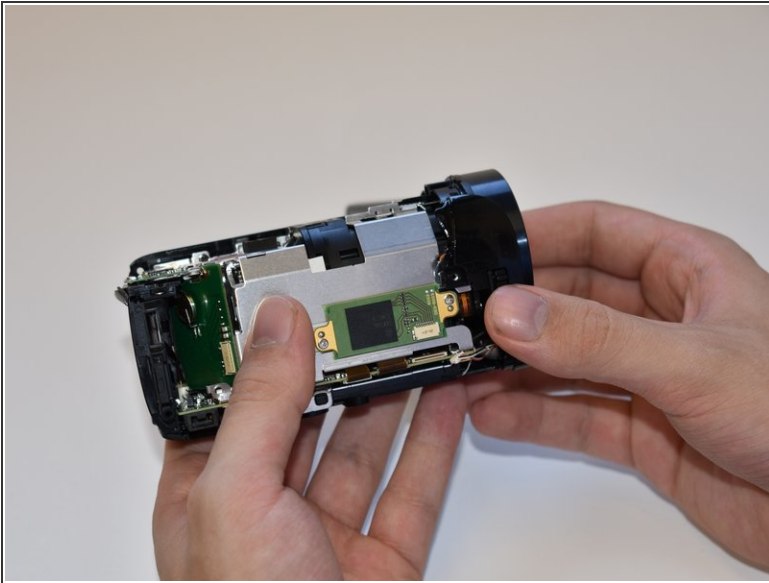
## Step 12



- Disconnect the small bundled cable connector on the side of the lens cover by pulling it straight out.



## Step 13



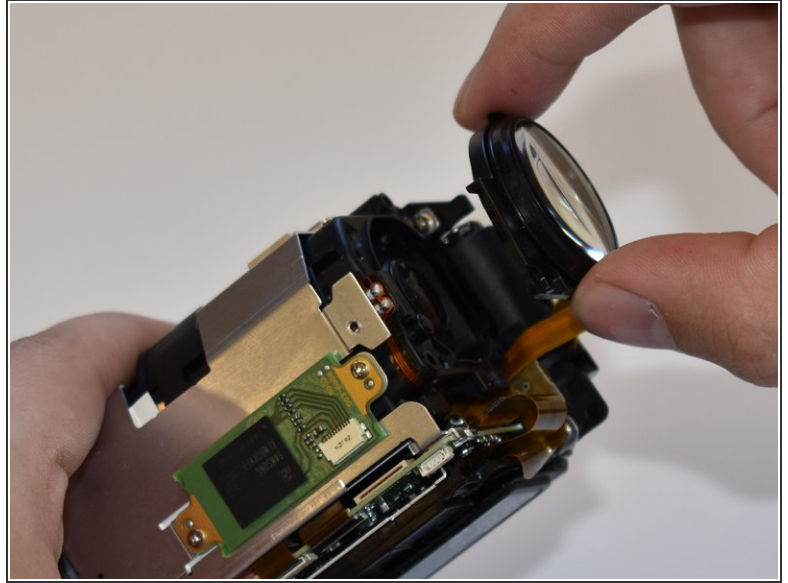
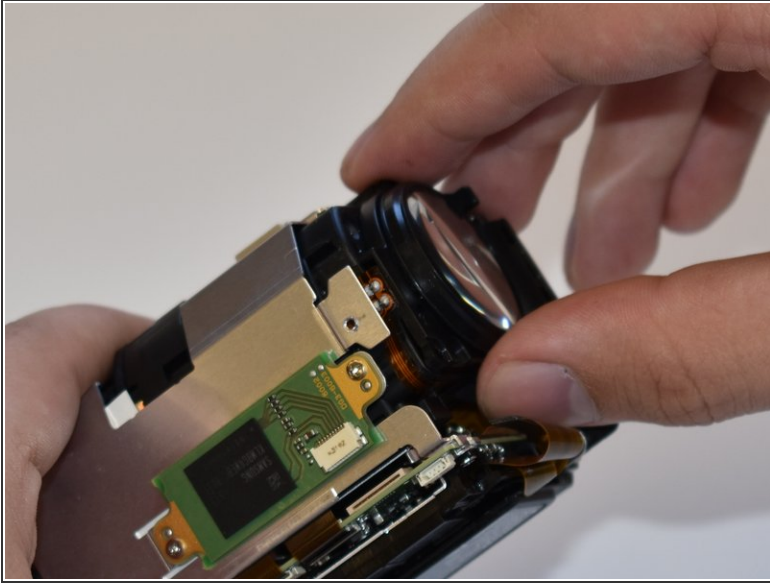
- Remove the lens cover by pulling straight away from the body.

## Step 14



- Remove the three 6mm Phillips #000 screws shown.

## Step 15



- Remove the lens by pulling straight away from the main body.
- ⓘ Be aware of the small rubber gasket around the lens as it may come loose.

To reassemble your device, follow these instructions in reverse order.