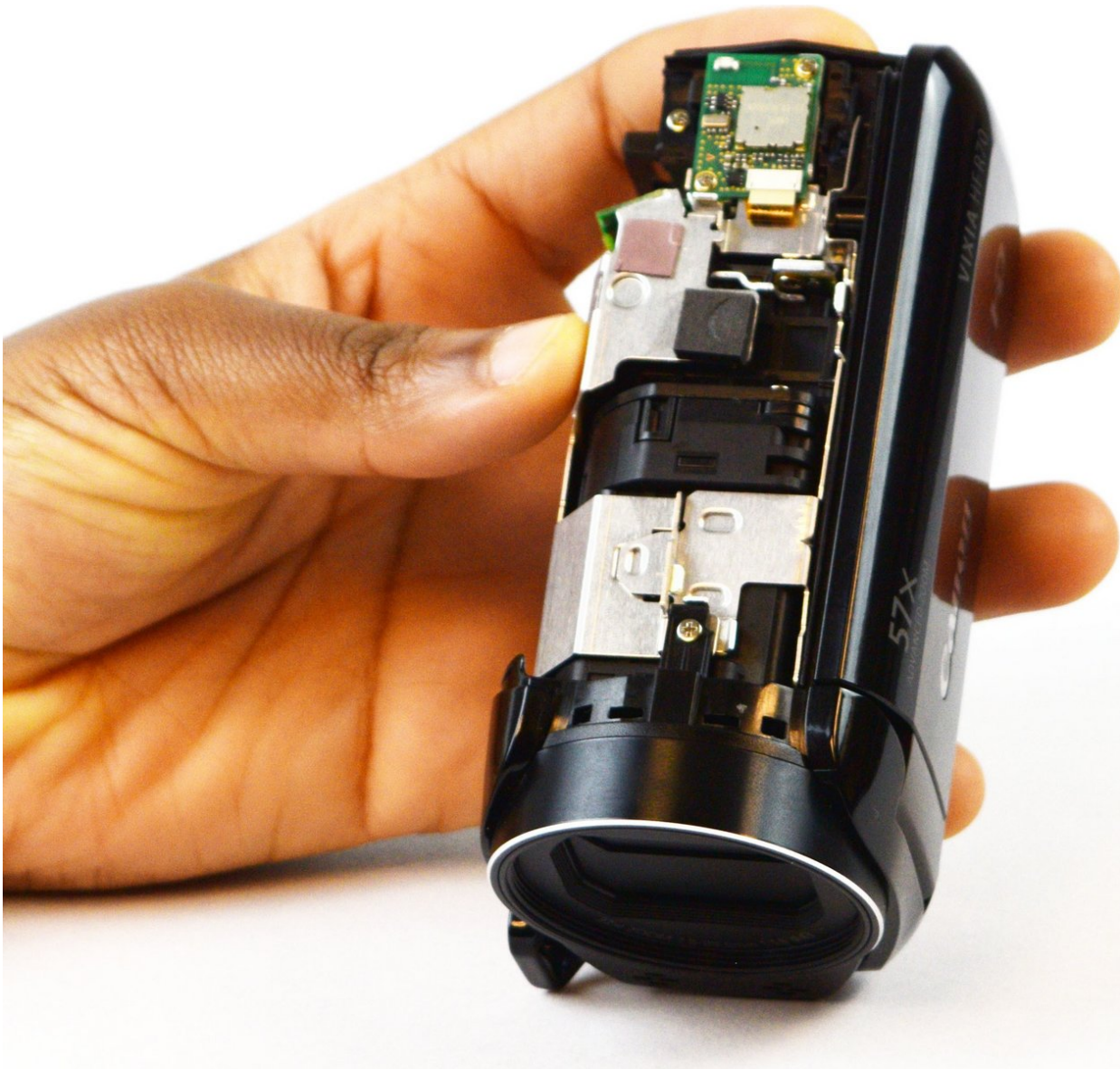




Canon Vixia HF R70 Top Panel Replacement

A detailed guide on removing the top panel of your camcorder.

Written By: Thomas Rogienski



INTRODUCTION

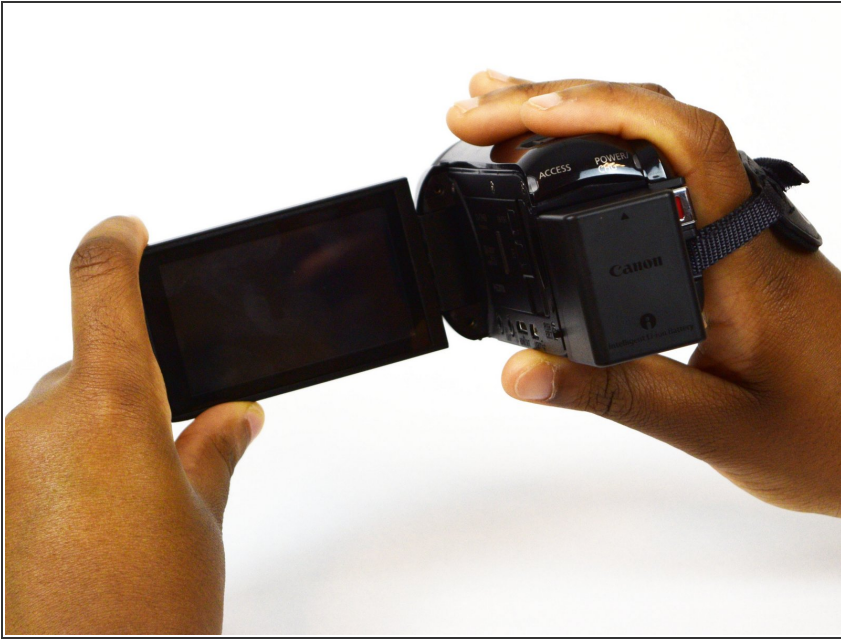
The top panel is the glossy plastic piece that rests on the top of the camcorder and protects the inner components. Along with the side panel, it must be removed before the internal parts of the camcorder can be accessed. Use this guide to remove and replace the top panel to your Canon Vixia HF R70.



TOOLS:

- [iFixit Opening Tools](#) (1)
 - [Phillips #00 Screwdriver](#) (1)
-

Step 1 — Battery



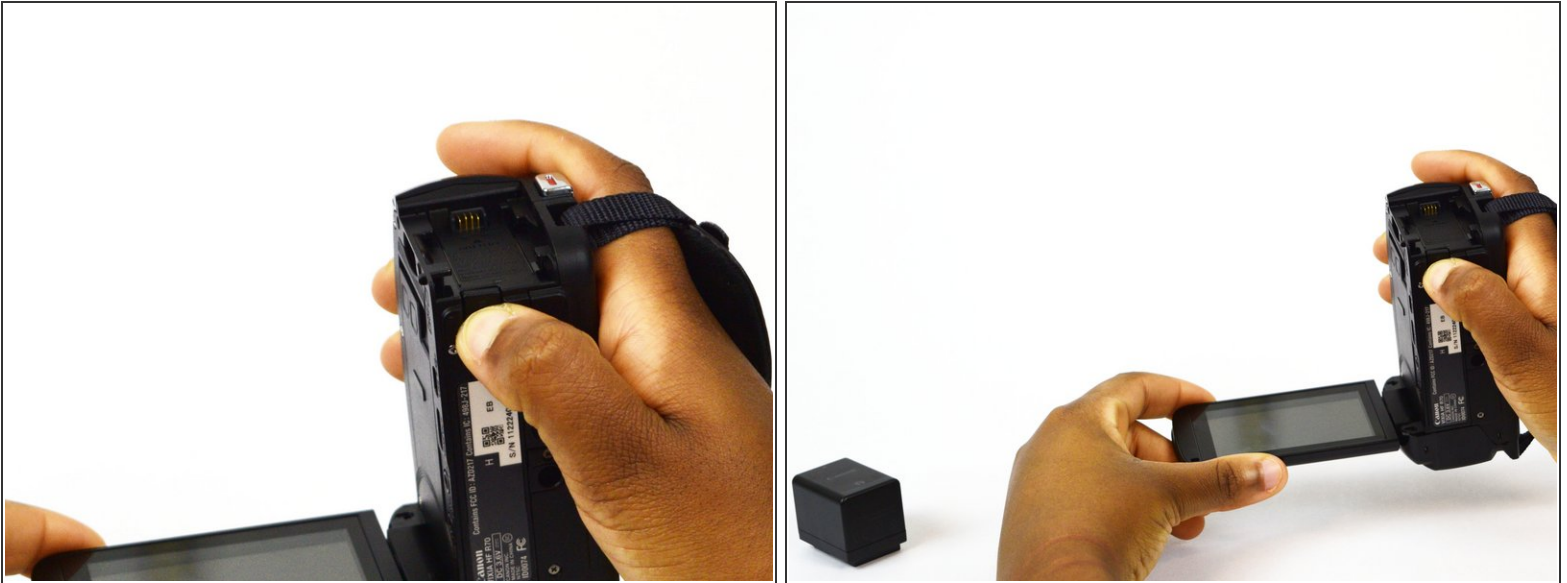
- Power off and unplug the device.
- Position the camera so that the battery is facing you.

Step 2



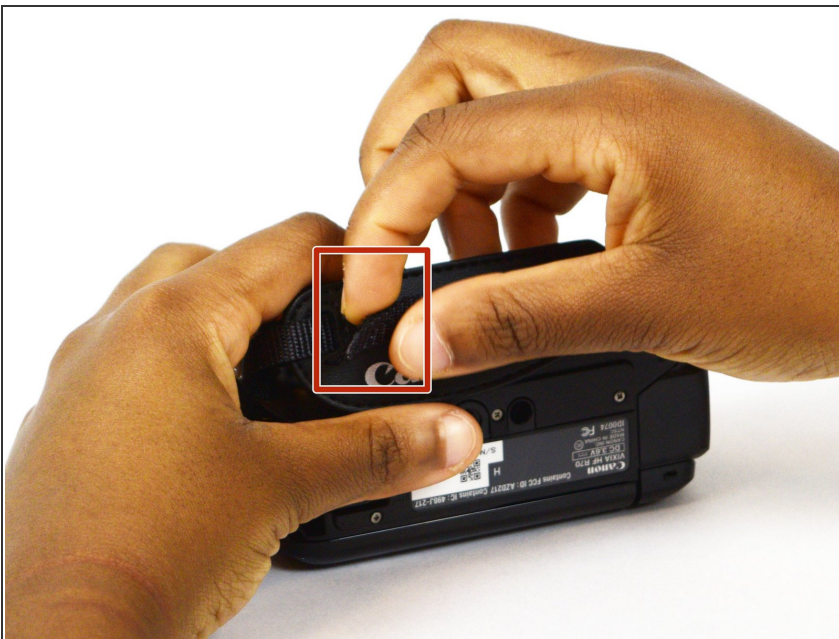
- Locate the latch on the bottom edge of the camera.
- Hold the battery into place and gently push down on the latch towards the lens.

Step 3



- While holding down the latch, remove the battery by pulling it out of the device.

Step 4 — Wrist Strap



- Position the camcorder so that the wrist strap is facing you.
- Locate the loose end of the strap.

Step 5



- Gently pull on the loose end to separate the Velcro.

Step 6



- Locate the "slot" on bottom right corner of the camcorder where the strap loops through.
- Pull the strap through the loop.

Step 7



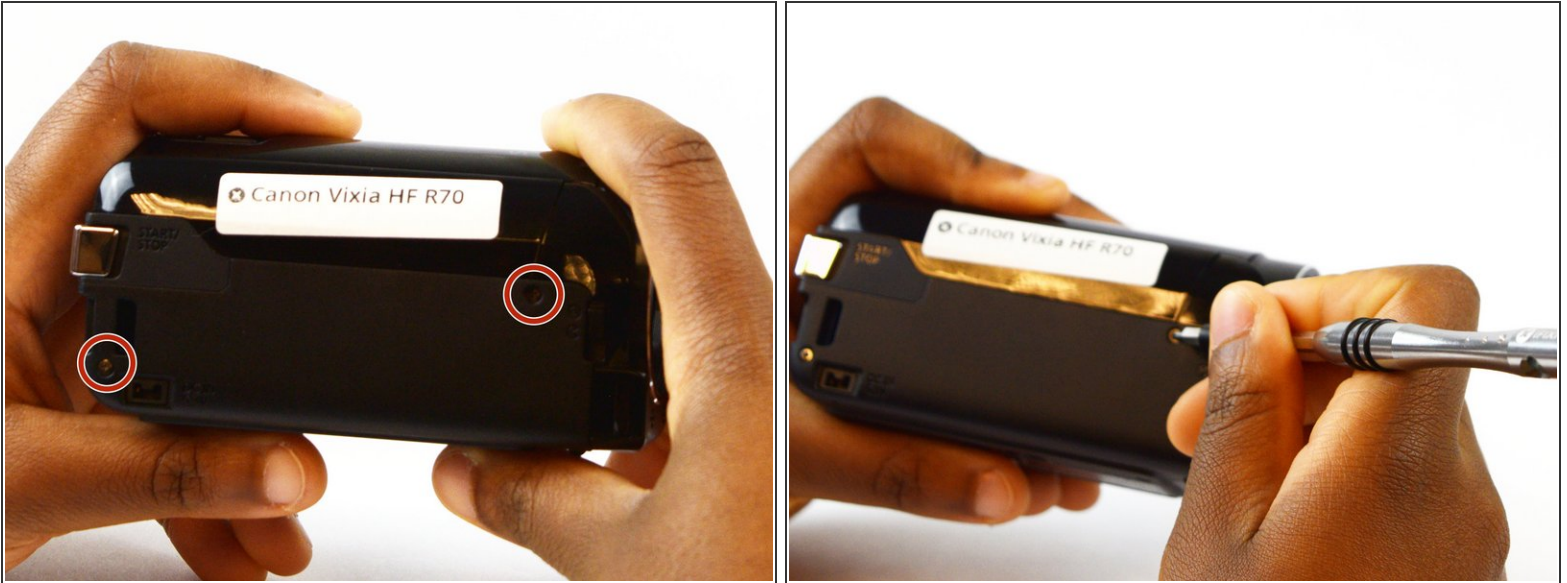
- Pull the strap through the leather cushion.

Step 8



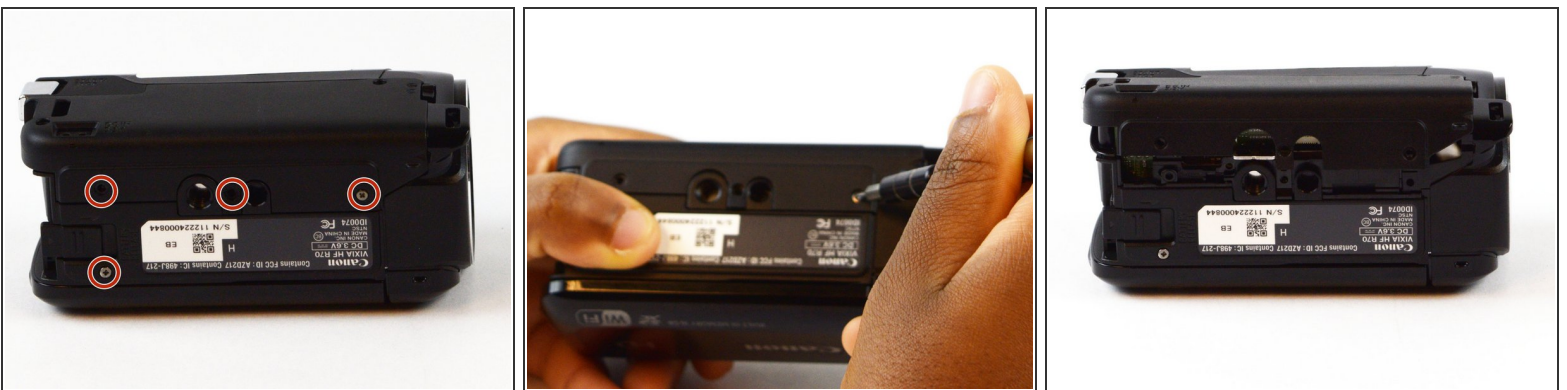
- Pull the strap through the slot on the left side of the camcorder.

Step 9 — Side Panel



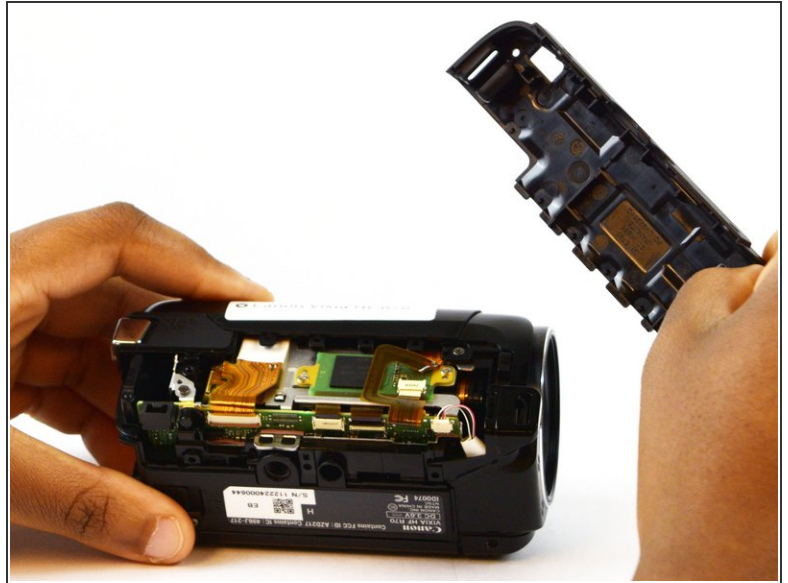
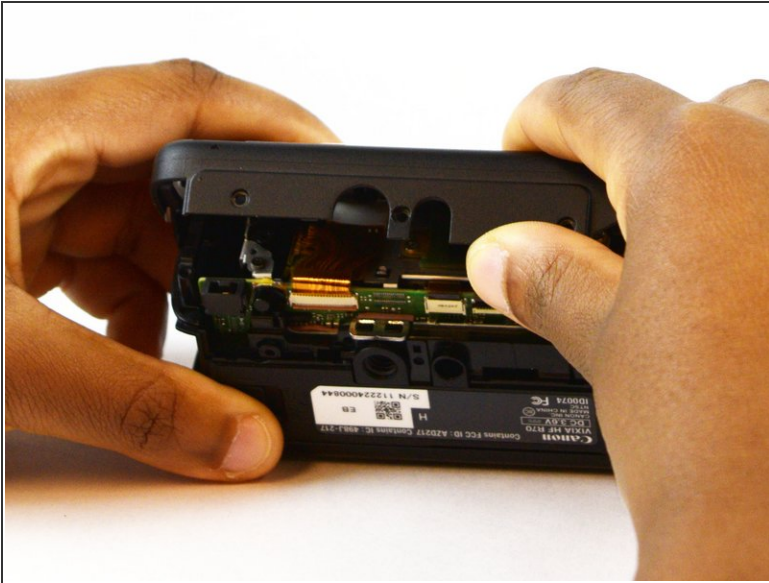
- Position the camcorder so that the side panel is facing you.
- Locate the two 6mm Phillips #00 screws on the side panel.
- Remove the the screws using a screwdriver with a Phillips #00 head.

Step 10



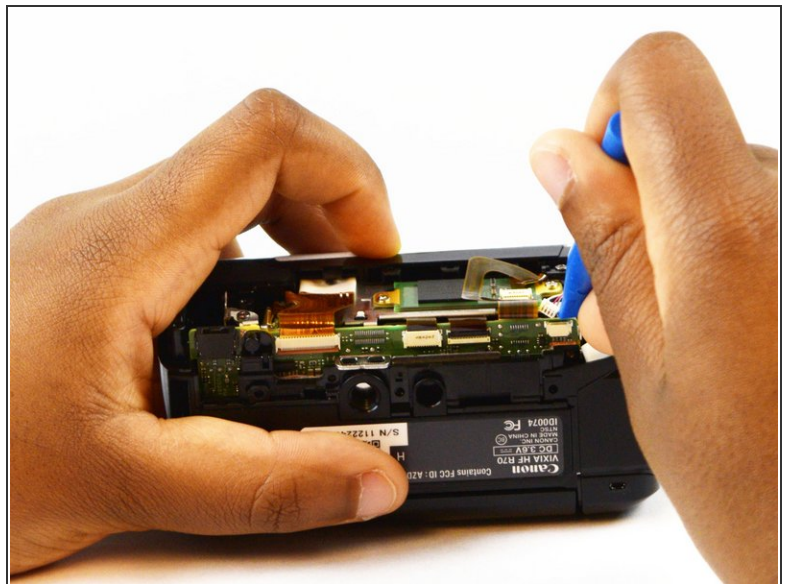
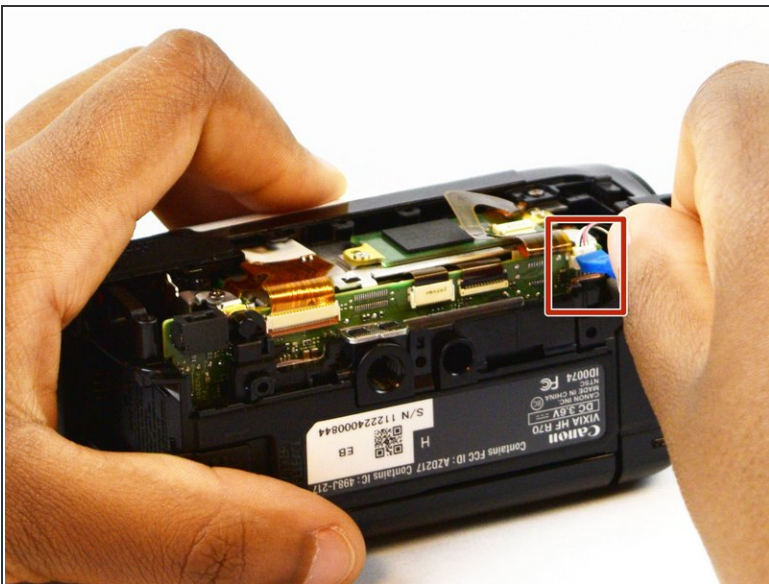
- Turn the camcorder so that the bottom is facing you.
- Using your screwdriver, locate and remove the four 6mm Phillips #00 screws connecting the side panel to the bottom of the camcorder.

Step 11



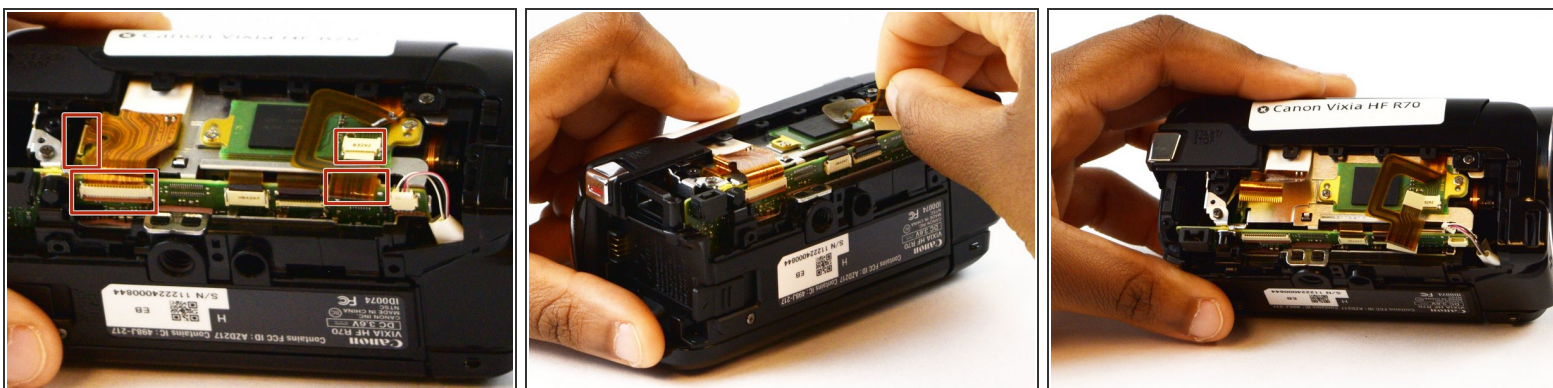
- Gently remove the side panel by pushing it up from the bottom.

Step 12 — Top Panel



- Disconnect the wires by inserting the plastic opening tool into the small slit.
- Begin to push upward with the plastic opening tool, disconnecting the two compartments.

Step 13



- Disconnect the four ZIF connectors by grasping the connector firmly and pulling gently.

Step 14



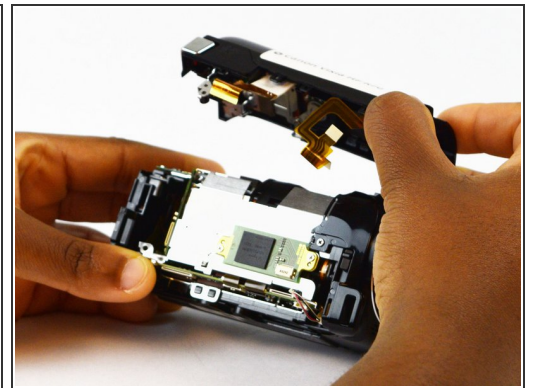
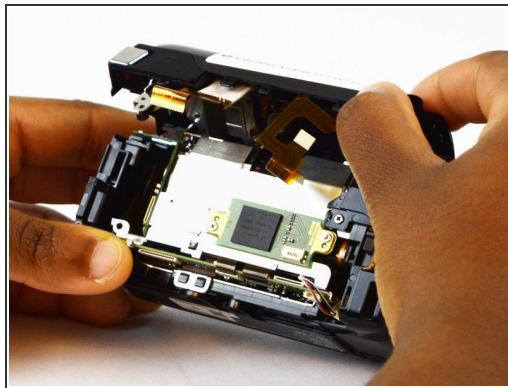
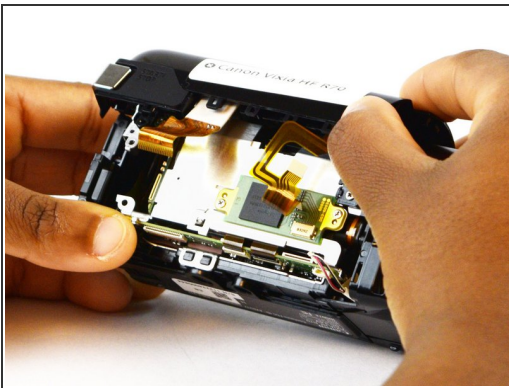
- Locate and remove the two 3mm Phillips #00 screws on the side of the camera where the side panel was removed.

Step 15



- Turn the camera over to the side with the LCD screen, and open the screen.
- Locate and remove the three 5mm Phillips #00 screws holding the top panel in place.

Step 16



- Pull the panel up and away until it is removed completely.

To reassemble your device, follow these instructions in reverse order.