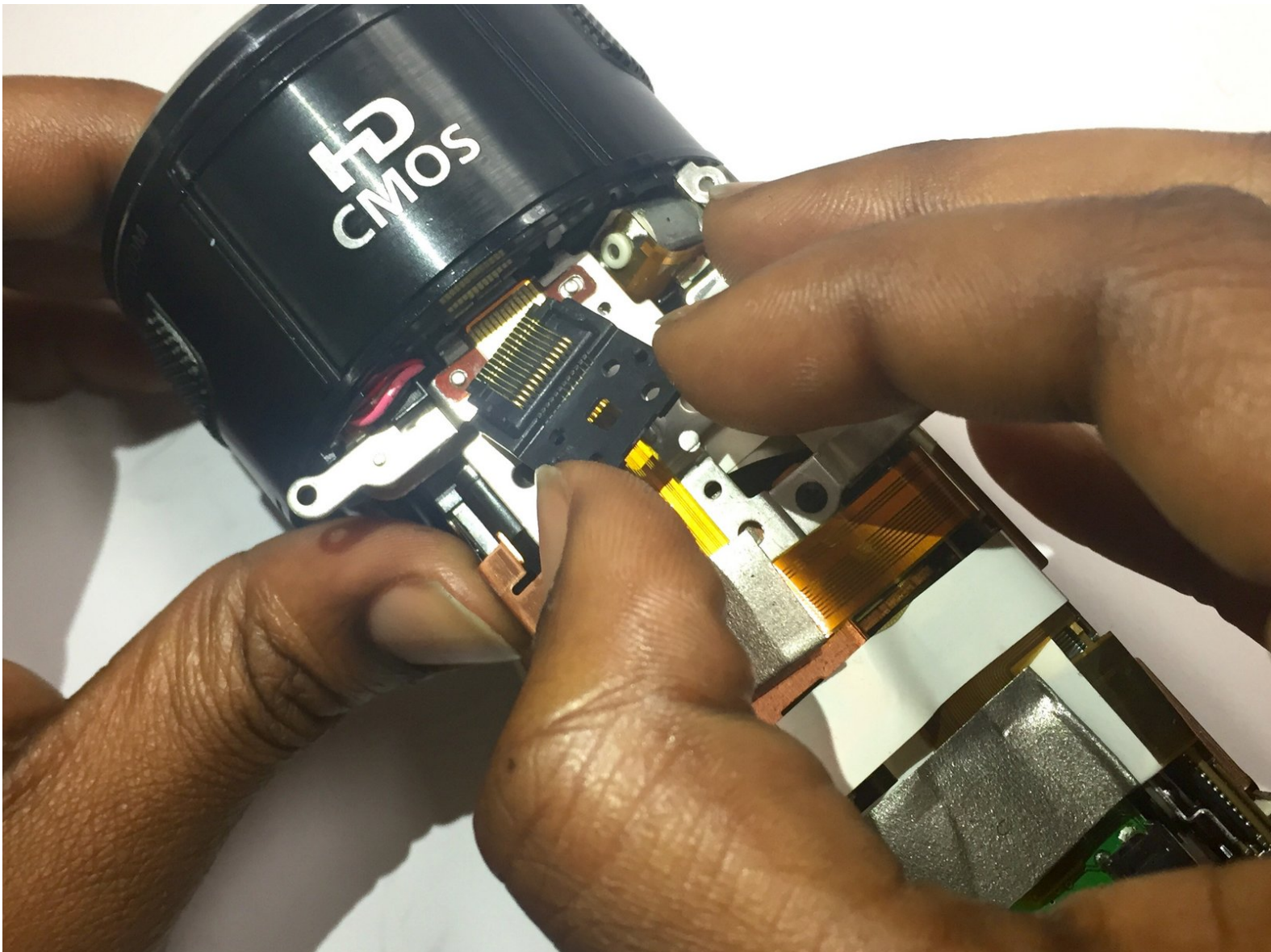




Canon Vixia HF S10 Camcorder Mini Advance Shoe Replacement

Here we will show you step-by-step how to remove this import connect in order to replace when needed.

Written By: Briana



INTRODUCTION

This import allows you to add working accessories to expand functionality such as a microphone or a flash.



TOOLS:

- [iFixit Opening Tools](#) (1)
- [Magnetic Project Mat](#) (1)
- [Phillips #0 Screwdriver](#) (1)



PARTS:

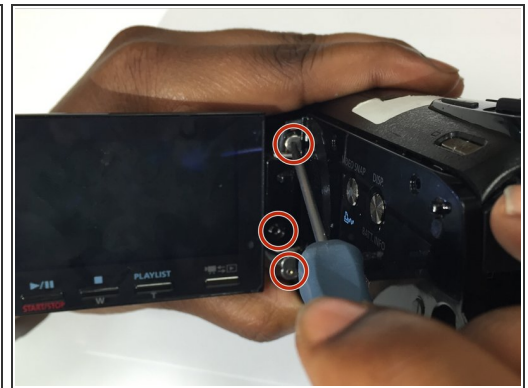
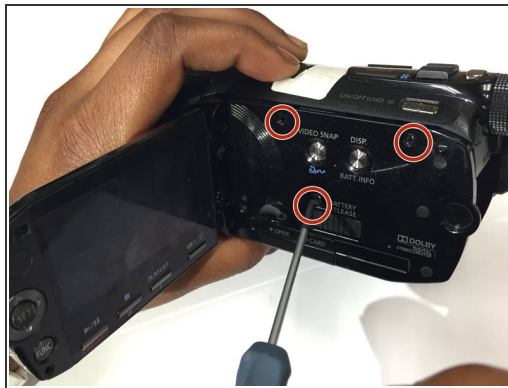
- [replacement mini shoe](#) (1)

Step 1 — Mini Advance Shoe



- Flip the camcorder upside down and remove the three 3x4 mm Phillips screws highlighted in the diagram.

Step 2



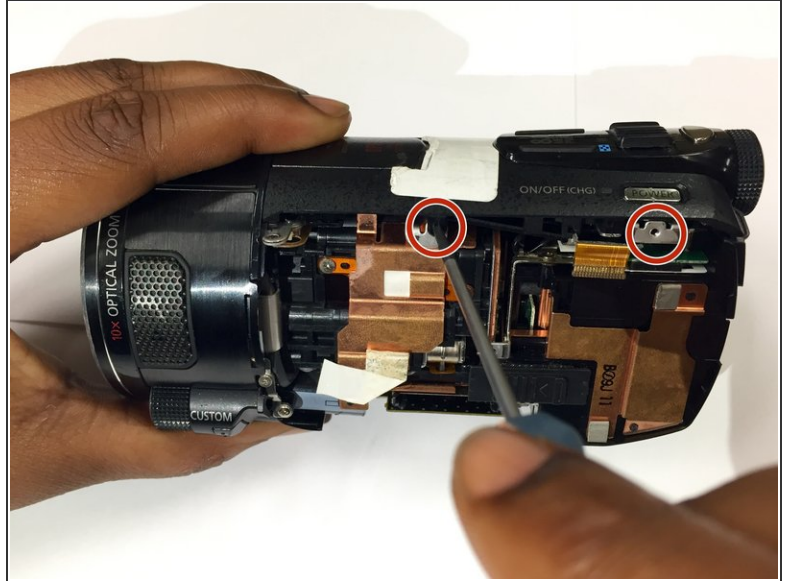
- Open the LCD screen.
- Remove the three 3x4 mm Phillips screws securing the black panel plastic case.
- From the inner corner in between the panel and the LCD screen, remove the two 2x2.5 mm Phillips screws and the 3x4 mm Phillips screw.

Step 3



- With the canon logo facing you, remove the plastic casing located in the back of the lens. Underneath this casing, you will find a hinge with a screw.
- Remove the 2x2.5 mm Phillips screw holding hinge in place.

Step 4



- Using your hands, remove the inside panel.
- After removing the panel, remove the two 1x2.5 mm Phillips screws.

Step 5



- Turn the camcorder back to step one position and remove remaining screws on the bottom platform. There will be four 2x2.5 mm Phillips screws.

Step 6



- Remove the strap from mount.
- Remove the two 1x2.5 mm Phillips screws revealed under the strap on the side panel.

Step 7



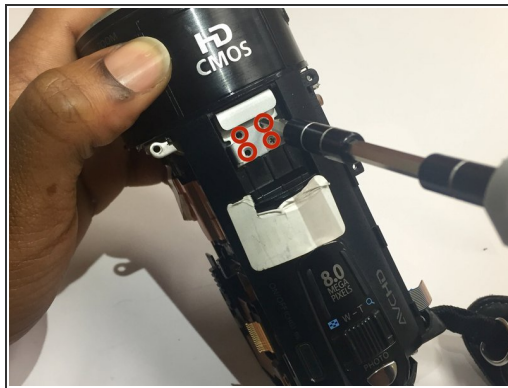
- Pry the side panel from the base of the camcorder by using the plastic opening tool.
- Remove the two 2x2.5mm Phillips screws located at the top.

Step 8



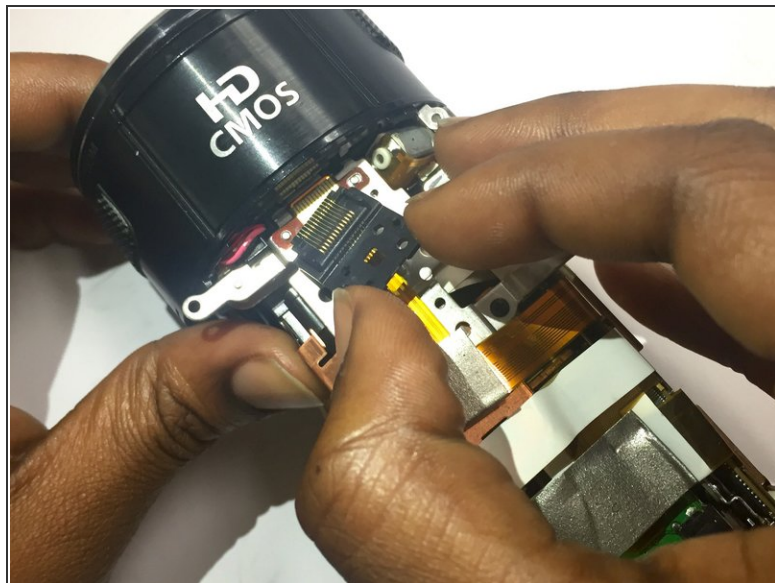
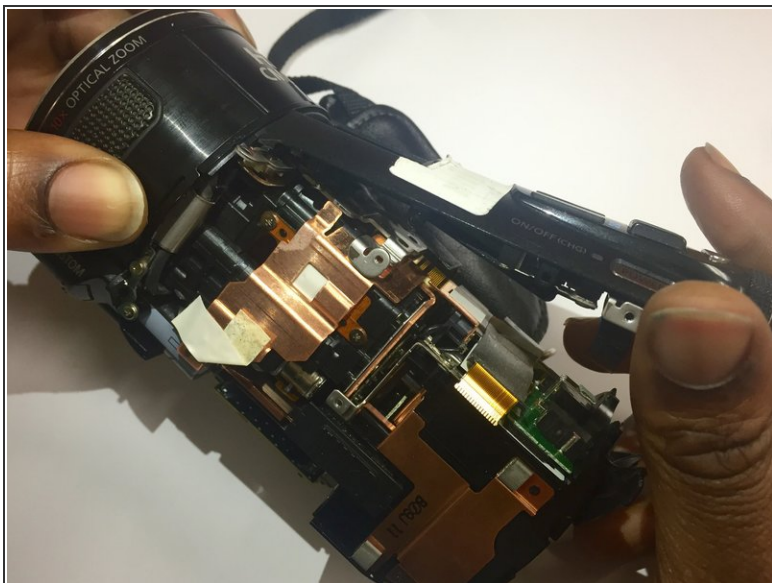
- Remove the two 3x4 mm Phillips screws located under the coverings labeled AV & DCIN. These covers can be found when the back of the camera is facing you.

Step 9



- Slide open the "Optical Image Stabilizer" cover located at the top of the camcorder.
- Remove the four 3x2.5 mm Phillips screws underneath.
- Using your fingers, remove the metal casing.

Step 10



- Lift the top cover of the camcorder using your fingers.
- Remove the the Mini Advance Shoe with your fingers

To reassemble your device, follow these instructions in reverse order.