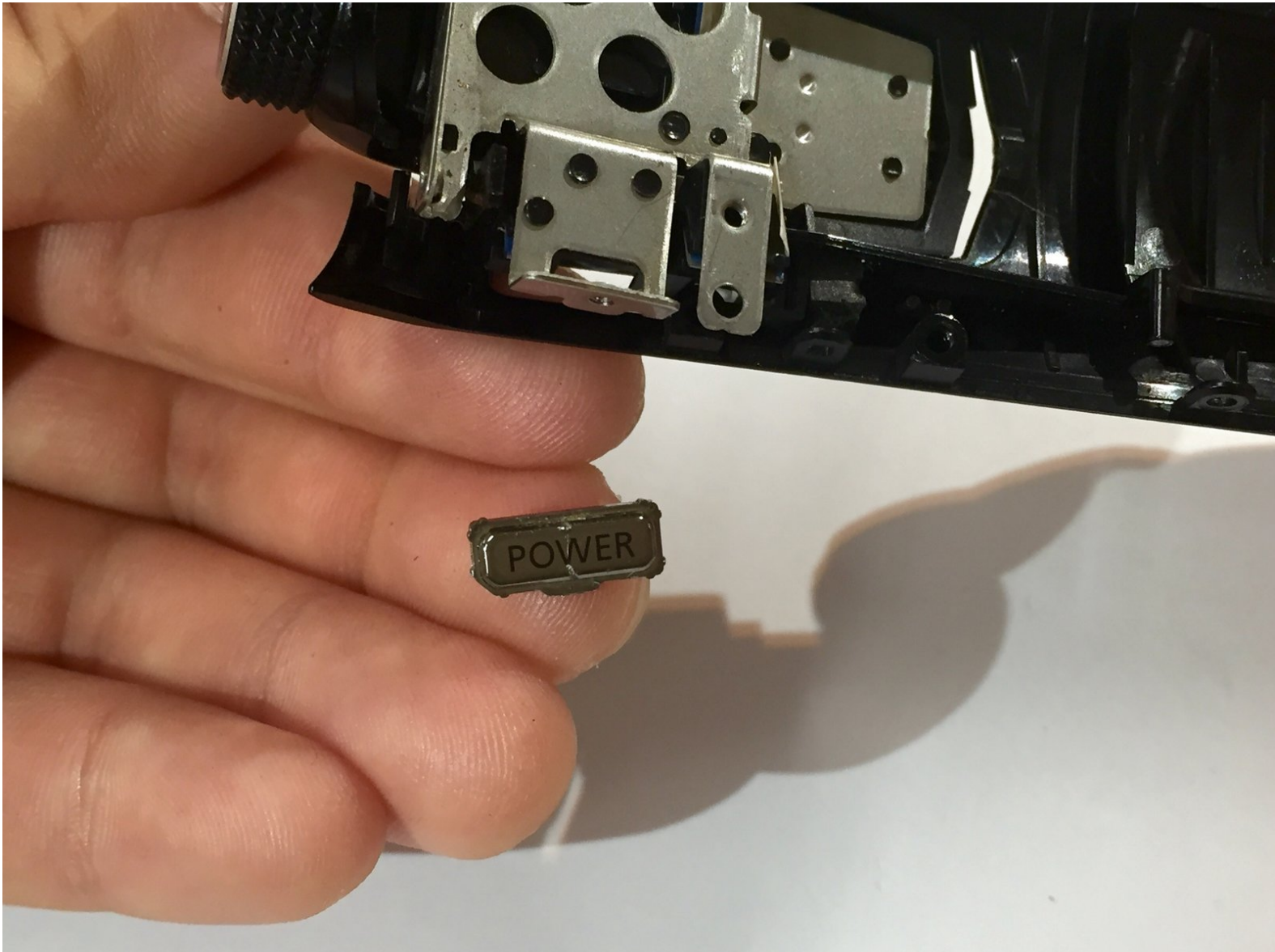




Canon Vixia HF S10 Camcorder Power Button Replacement

This guide will help you replace the power button which is one of the major parts on a Camcorder.

Written By: Olivia



INTRODUCTION

If your power button is jammed or isn't working properly, this guide will simply demonstrate on how to replace the power button in a Canon Vixia HF S10. For this particular fix, you will need a few items: your hands, a plastic opening tool, a Phillips screwdriver, and a magnetic mat to keep the screws in place.



TOOLS:

- [Phillips #00 Screwdriver](#) (1)
 - [Magnetic Project Mat](#) (1)
 - [Spudger](#) (1)
 - [iFixit Opening Tools](#) (1)
 - [Slip Joint Pliers](#) (1)
-

Step 1 — Power Button



- Turn the camcorder upside down and remove the three 3x4 mm Phillips screws securing the black plastic case.

Step 2



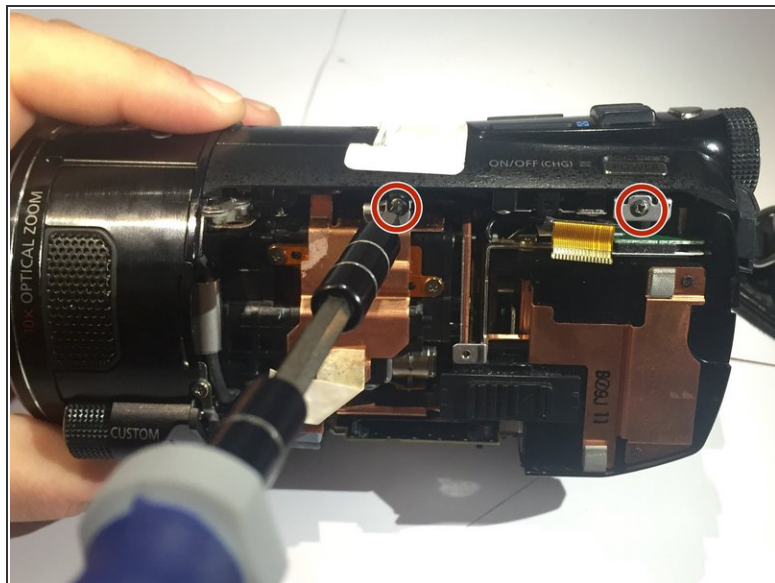
- Flip open the LCD screen.
- Remove the three 3x4 mm Phillips screws securing the black panel plastic case.
- From the inner corner in between the panel and the LCD screen, remove the two 2x2.5 mm Phillips screws and the 3x4 mm Phillips screw.

Step 3



- Remove the black plastic covering with your fingers. Underneath the covering, you will find a screw hinge.
- Remove the 2x2.25 mm Phillips screw located at the top of the screw hinge.

Step 4



- Using your fingers remove the panel from the base of the camcorder.
- Once panel is off, remove the two 1x2.5 mm Phillips screws.

Step 5



- Turn the camcorder upside down and remove the four 2x2.25 mm Phillips screws.

Step 6



- Turn the camcorder to the side and remove the strap.
- Remove the two 1x2.5 mm Phillips screws.

Step 7



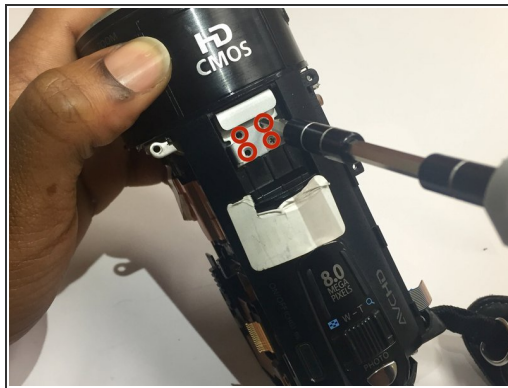
- Using a plastic opening tool, pry off the side panel from the base of the camcorder.
- Remove the two 2x2.5mm Phillips screws located at the top

Step 8



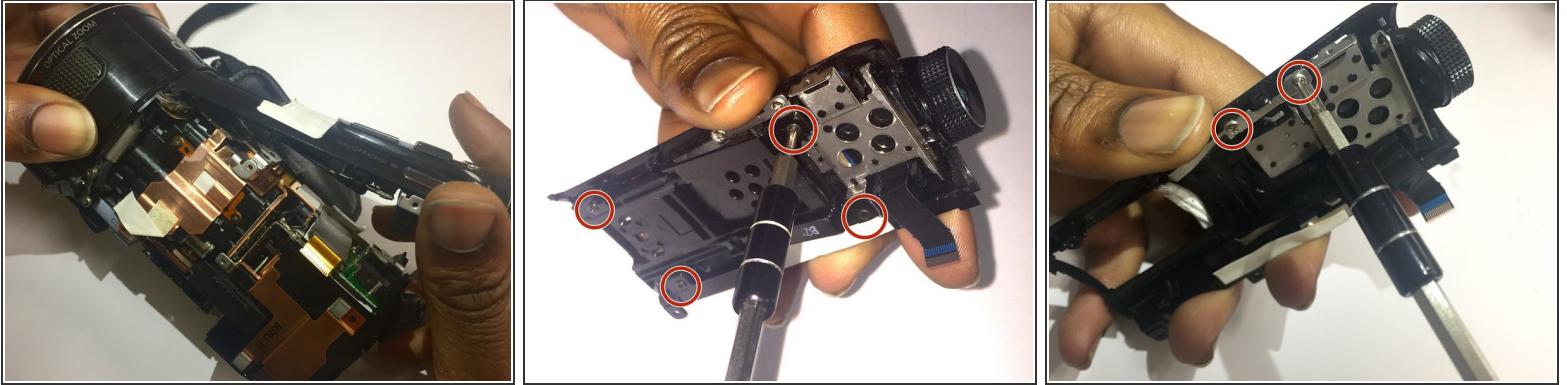
- Remove the two 3x4 mm Phillips screws beneath the two covers (AV & DCIN).

Step 9



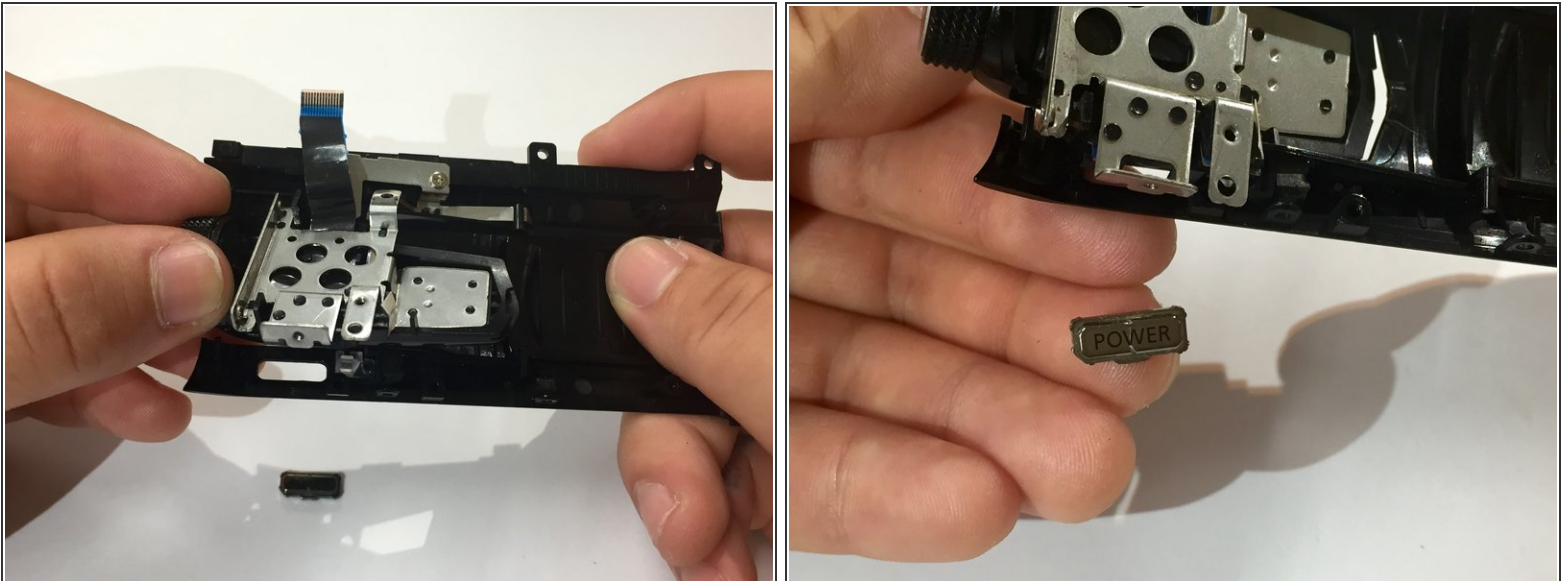
- Slide open the "Optical Image Stabilizer" cover located at the top of the camcorder.
- Remove the four 3x2.5 mm Phillips screws.
- Using your fingers, remove the metal casing.

Step 10



- Using your fingers pop off the top cover of the camcorder.
- Remove the four Phillips screws located underneath the top cover.; three 3x4 mm Phillips screws and one 2x2.5 mm Phillips screw.
- Remove the two 3x2.5 mm Phillips screws from the metal casing located underneath the top cover.

Step 11



- Using your fingers, slightly move the metal casing.
- Remove the power button.

To reassemble your device, follow these instructions in reverse order.