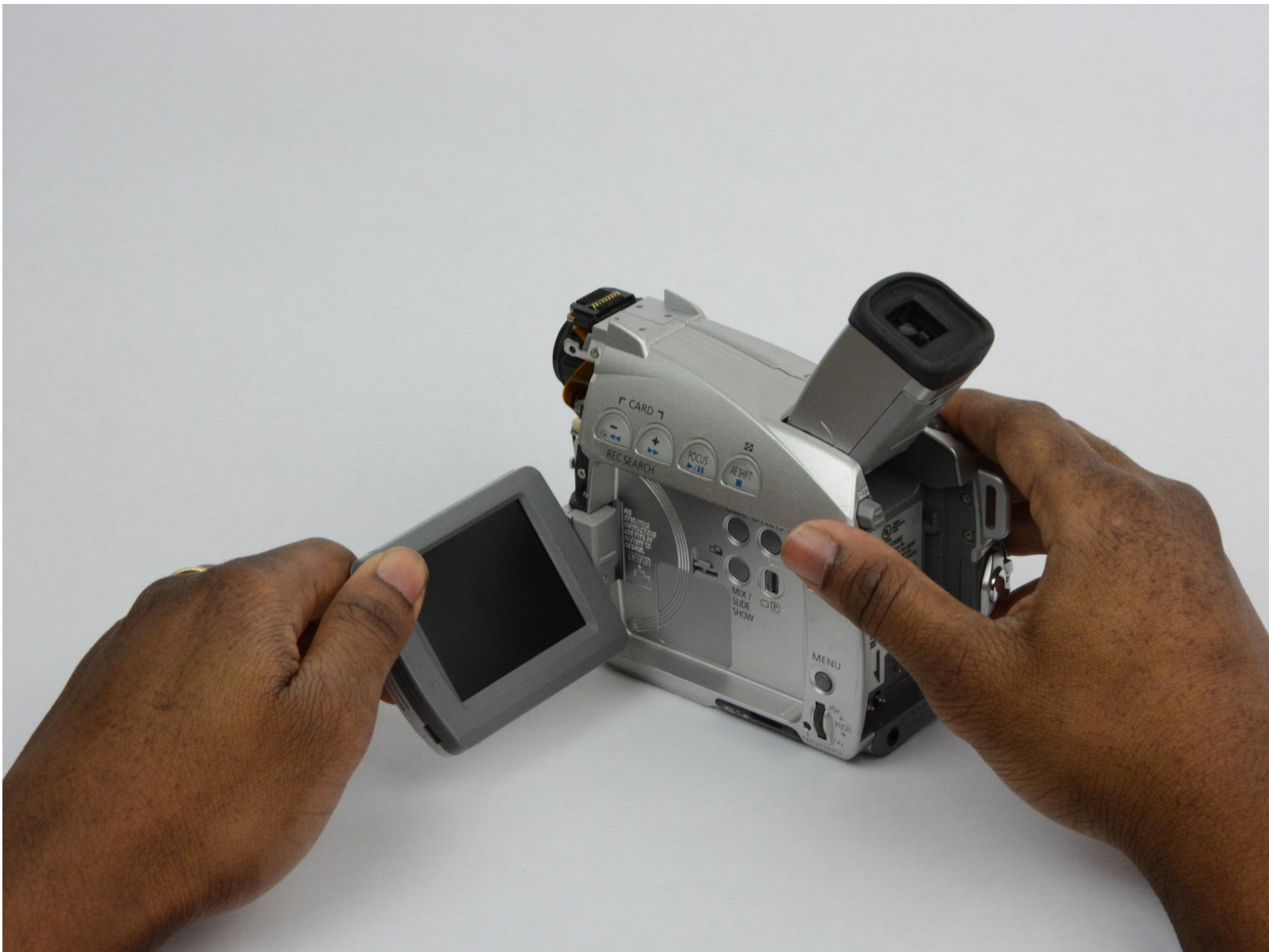




Canon ZR70MC LCD Component Replacement

Use this guide to replace the LCD screen. This includes the LCD circuit board as well as the LCD screen.

Written By: khalid clarke



INTRODUCTION

Use this guide to replace the LCD screen on your device.



TOOLS:

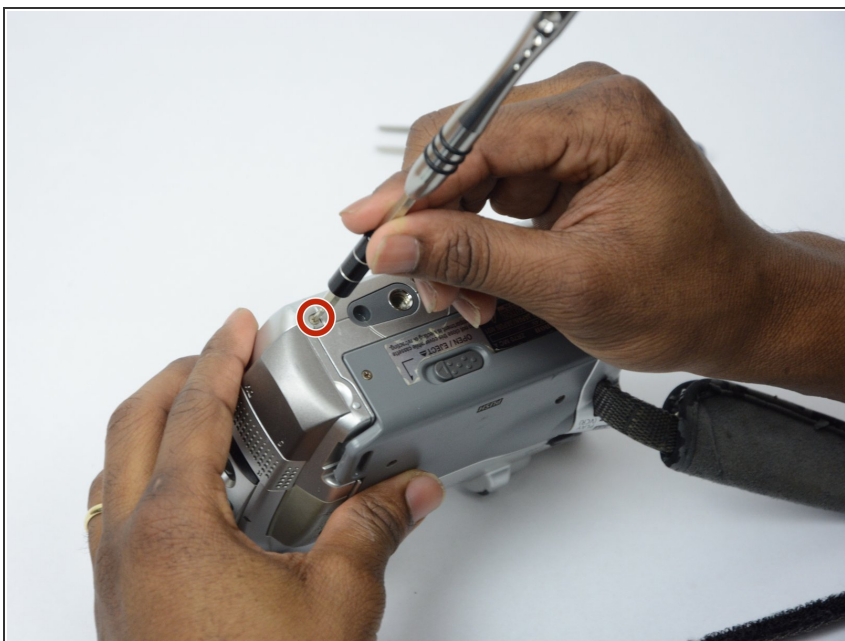
- [64 Bit Driver Kit](#) (1)
 - [Tweezers](#) (1)
 - [iFixit Opening Tools](#) (1)
-

Step 1 — Front Panel



- Unscrew the 3.35mm screw.

Step 2



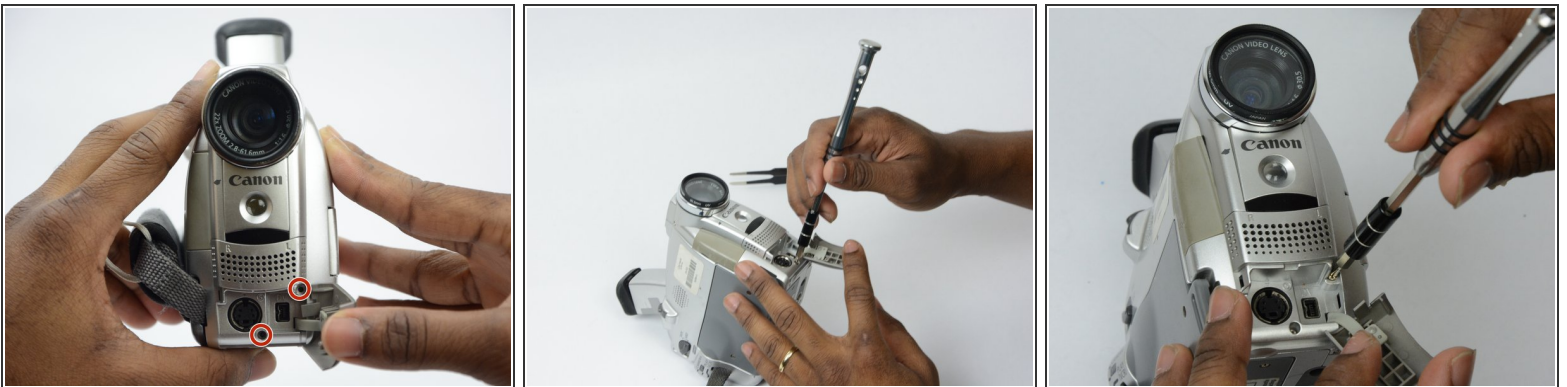
- Turn the ZR70MC so that you can see the bottom of the camcorder.
- Unscrew the 3.35 mm located in the top left portion of the camera.

Step 3



- Turn the camera on the side and remove the cover for the audio inputs. There is a 2.65 mm screw located behind the cover.
- Remove the 2.65 mm screw.

Step 4



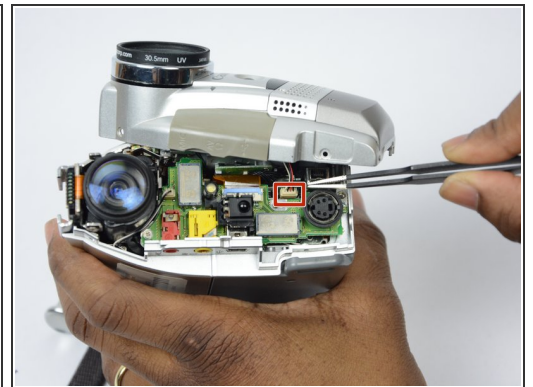
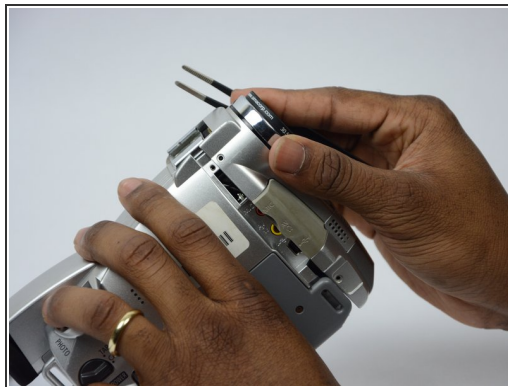
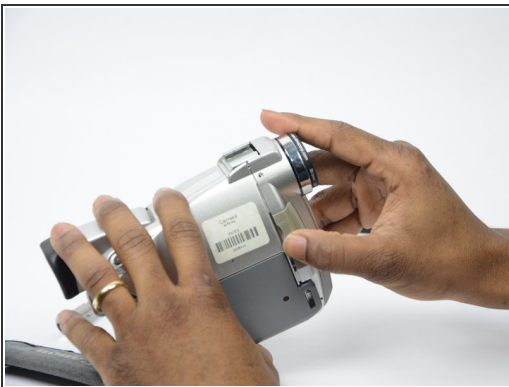
- Remove the cover located on the front of the camcorder and remove the cover by pulling on the bottom groove.
- Locate and remove the two 3.35 mm screws.

Step 5



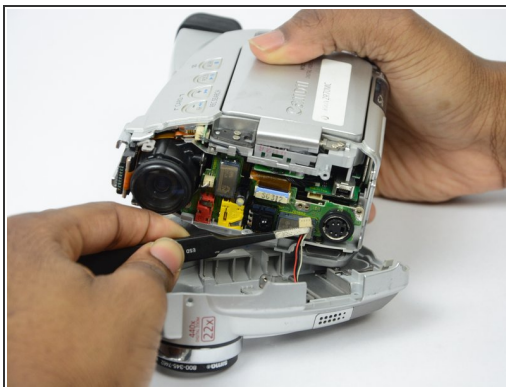
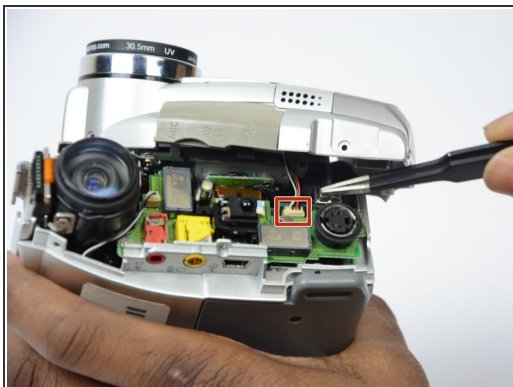
- Turn the camcorder so that the bottom is facing up and open the tape cassette compartment.
- There is one 3.35 mm screw located under the tape cassette panel on the front left side of the camcorder. Remove the screw.

Step 6



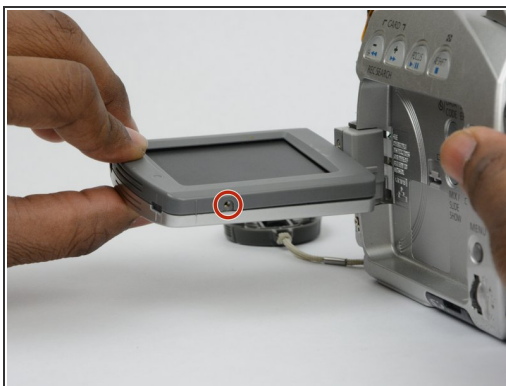
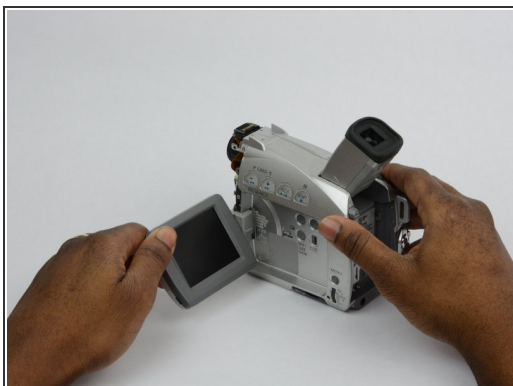
- Now that all of the screws are removed, remove the front panel by gently pulling on the front panel.
- ⓘ The speaker will be connected to the main body by a wire. Be careful not to damage this wire.

Step 7



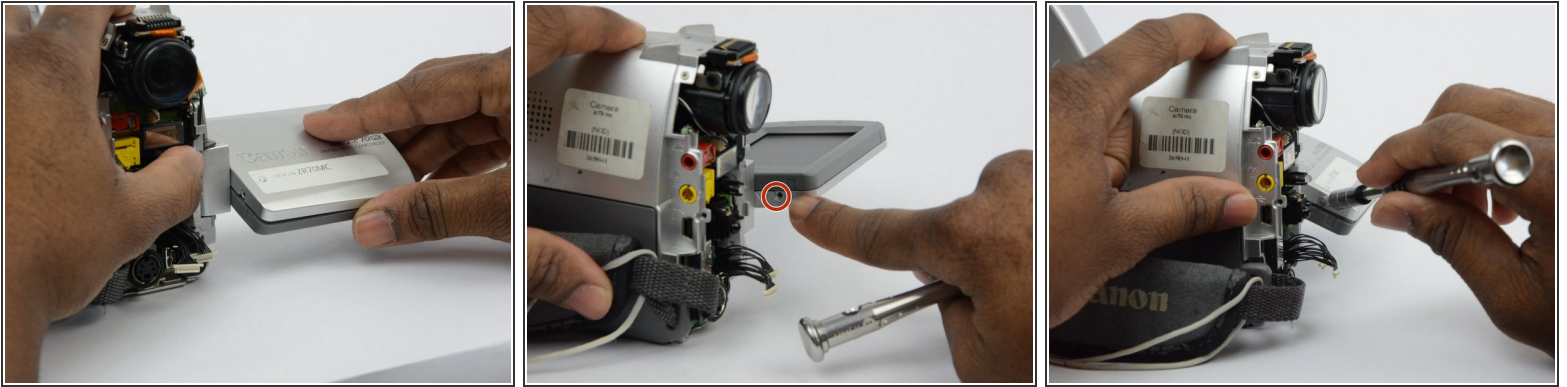
- Use tweezers to gently pull the speaker wire from the main body of the camcorder.
- Pull the front panel completely away from the main body of the camcorder.

Step 8 — LCD screen



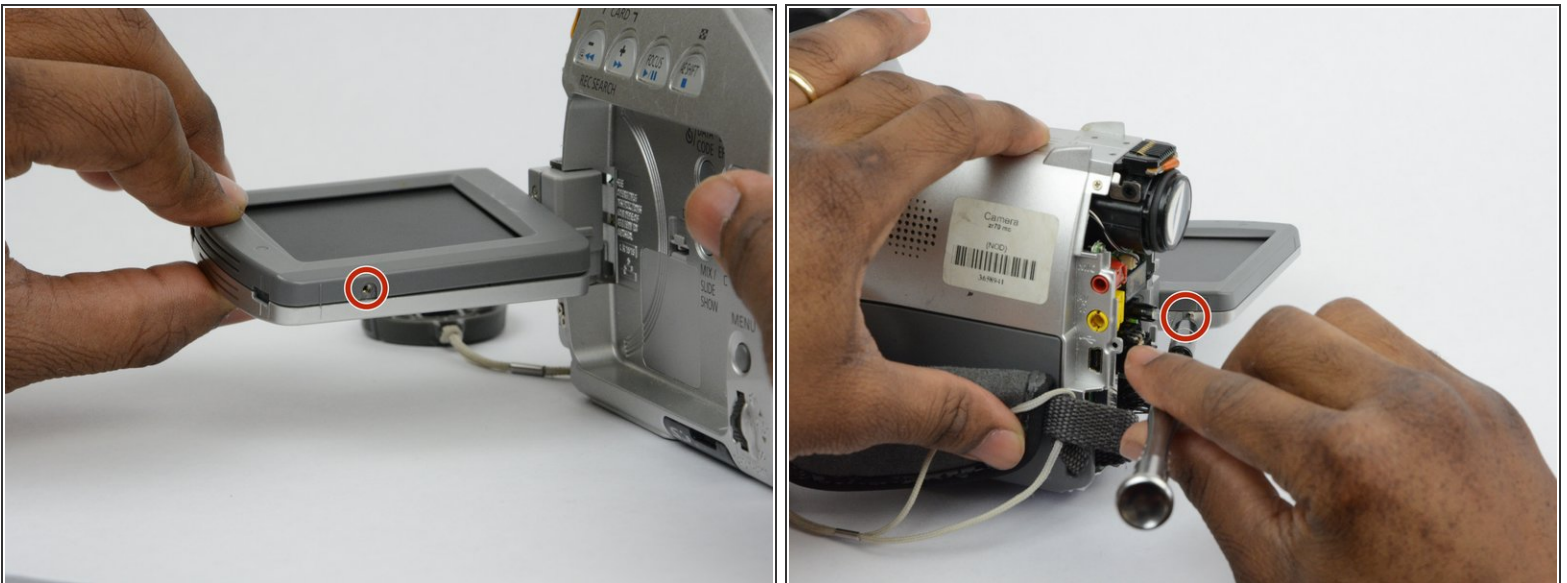
- Open the LCD screen.
- Locate and remove the 2.7 mm screw on the bottom of the LCD monitor.

Step 9



- Turn the LCD monitor so that the screen is facing down.
- There is a 2.7 mm screw on the LCD monitor where the monitor is connected to the main body of the camcorder. Remove the 2.7 mm screw.

Step 10



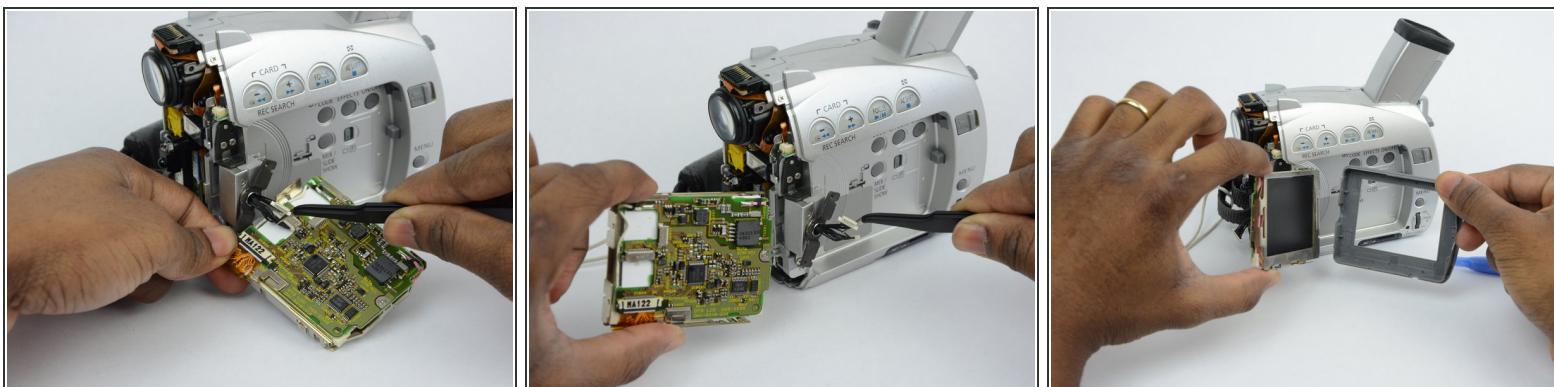
- Turn the LCD monitor so that the screen is facing up.
- There is a 2.7 mm screw located where the LCD monitor is connected to the main body of the camcorder. Remove the 2.7 mm screw.

Step 11



- Now that all the screws are removed, use the plastic opening tool to gently pry the LCD monitor case open.

Step 12



- Use tweezers to remove the wire connections that hold the LCD screen in place.
- Remove the entire LCD screen.

To reassemble your device, follow these instructions in reverse order.