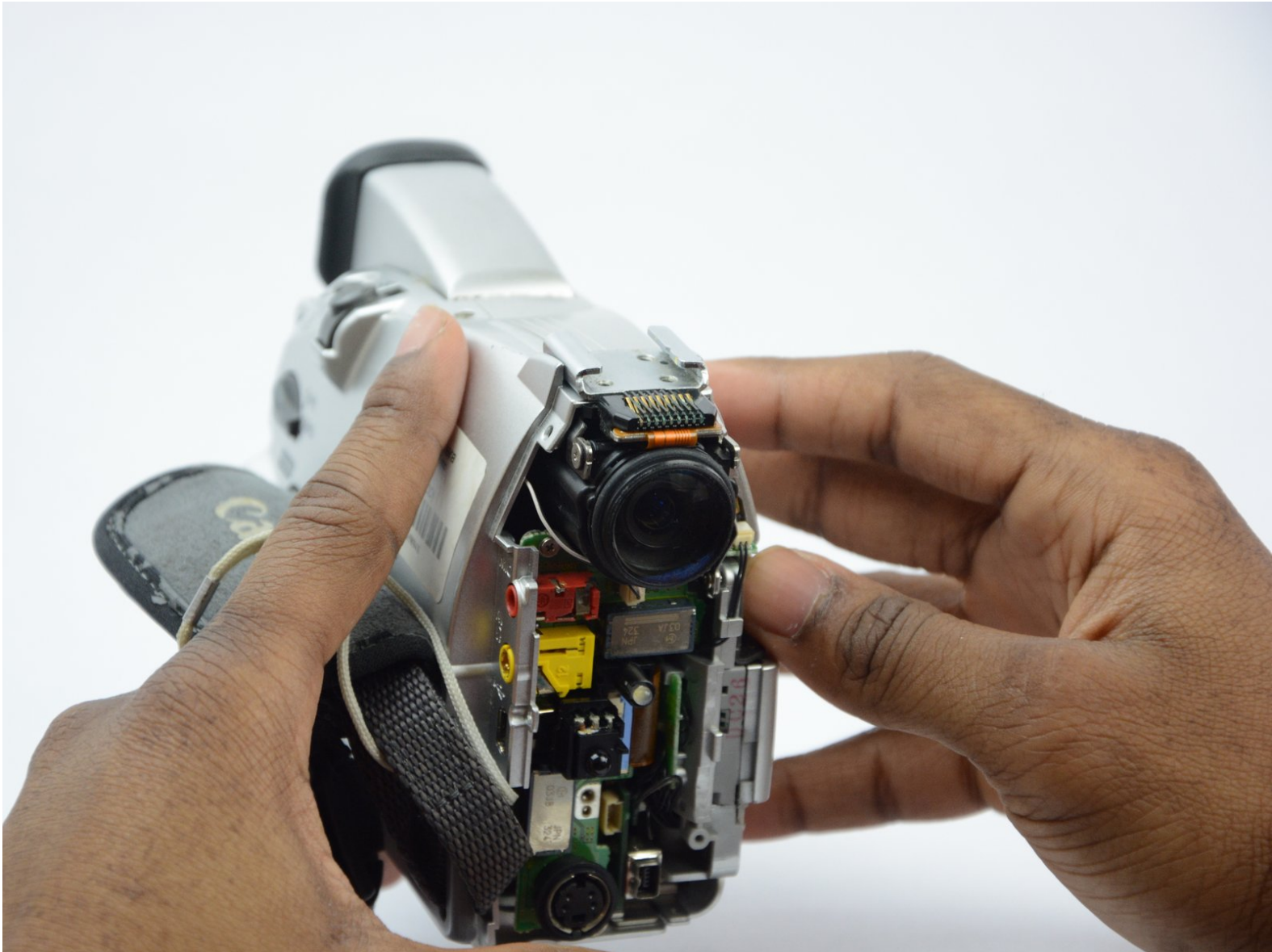




# Canon ZR70MC Lens Replacement

Use this guide to replace the front lens of the ZR70MC camcorder.

Written By: khalid clarke



---

## INTRODUCTION

The lens of the Canon ZR70MC is the most difficult component to replace. There are many steps in this guide so make sure that you allow yourself adequate time to complete this replacement guide. There are also many small parts so make sure to have a designated area to keep the parts that you take off. This guide will show you how to gain access to and replace the lens of the camcorder. Do not damage any films or wire that you come across.



### TOOLS:

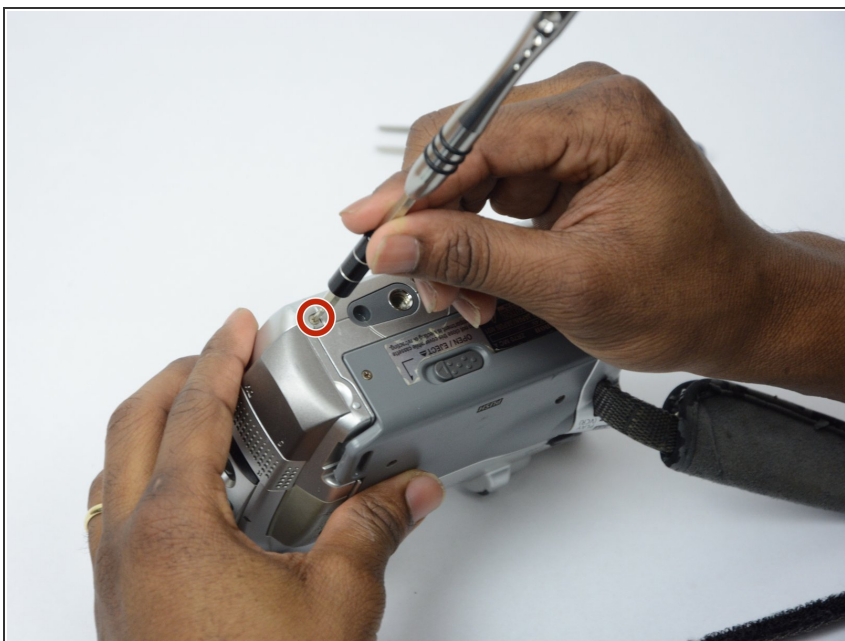
- [Tweezers](#) (1)
  - [64 Bit Driver Kit](#) (1)
-

## Step 1 — Front Panel



- Unscrew the 3.35mm screw.

## Step 2



- Turn the ZR70MC so that you can see the bottom of the camcorder.
- Unscrew the 3.35 mm located in the top left portion of the camera.



## Step 3



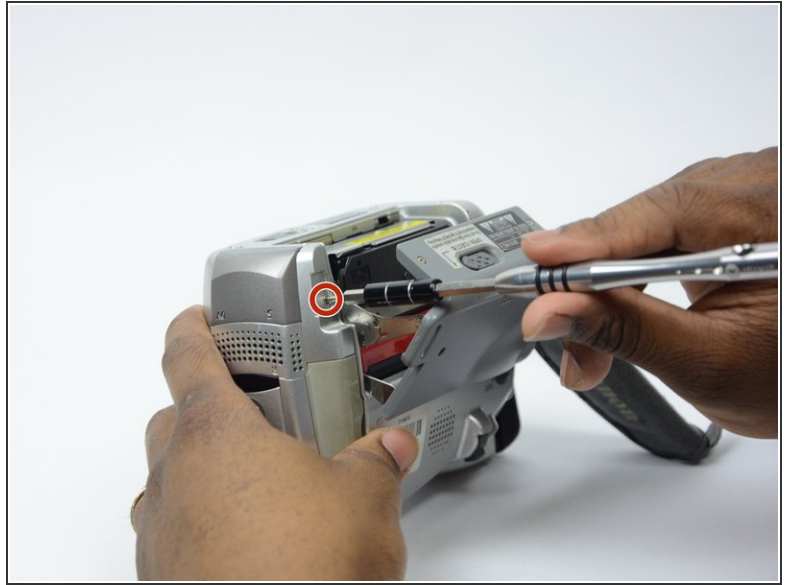
- Turn the camera on the side and remove the cover for the audio inputs. There is a 2.65 mm screw located behind the cover.
- Remove the 2.65 mm screw.

## Step 4



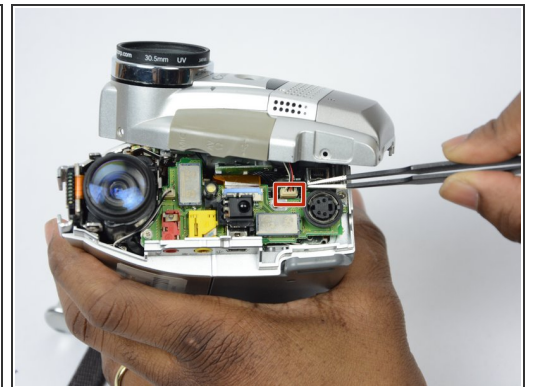
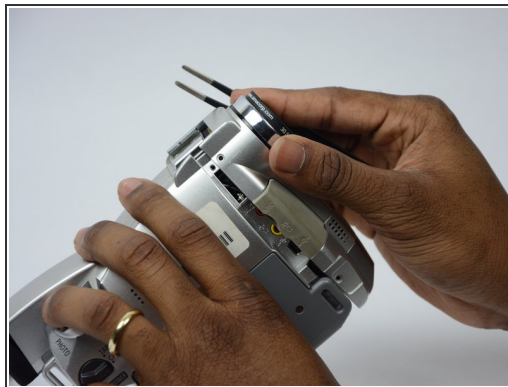
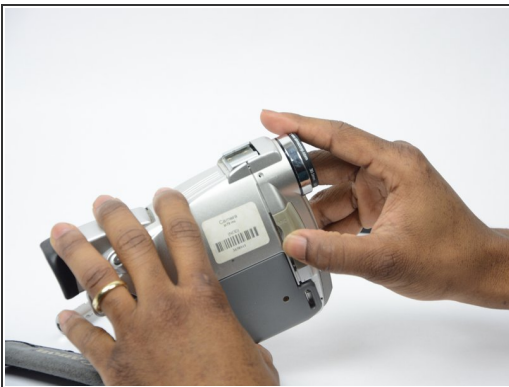
- Remove the cover located on the front of the camcorder and remove the cover by pulling on the bottom groove.
- Locate and remove the two 3.35 mm screws.

## Step 5



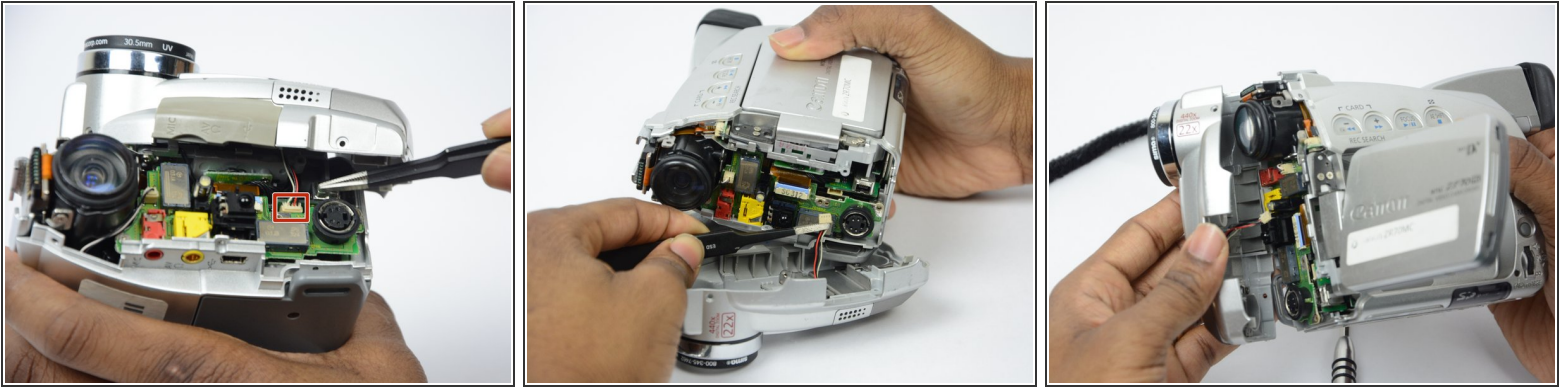
- Turn the camcorder so that the bottom is facing up and open the tape cassette compartment.
- There is one 3.35 mm screw located under the tape cassette panel on the front left side of the camcorder. Remove the screw.

## Step 6



- Now that all of the screws are removed, remove the front panel by gently pulling on the front panel.
- ⓘ The speaker will be connected to the main body by a wire. Be careful not to damage this wire.

## Step 7



- Use tweezers to gently pull the speaker wire from the main body of the camcorder.
- Pull the front panel completely away from the main body of the camcorder.

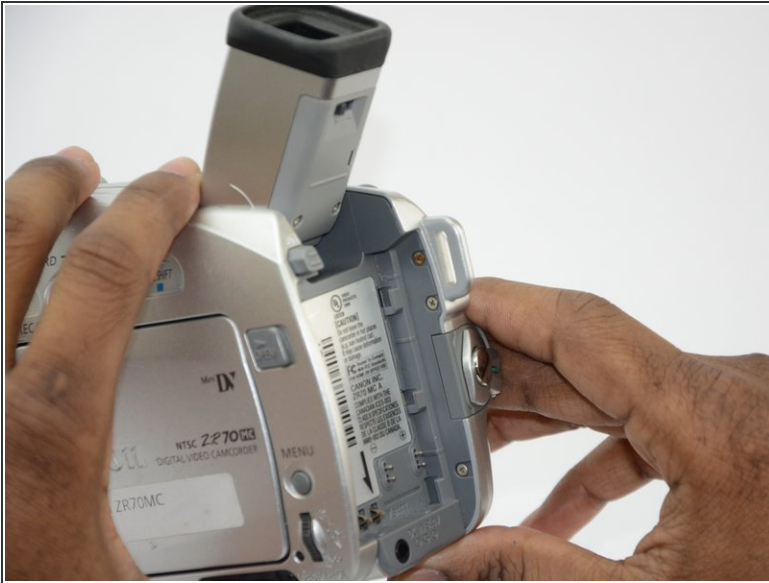
## Step 8 — Side Panel



- Remove all 3.75 mm screws from the bottom of the camcorder.

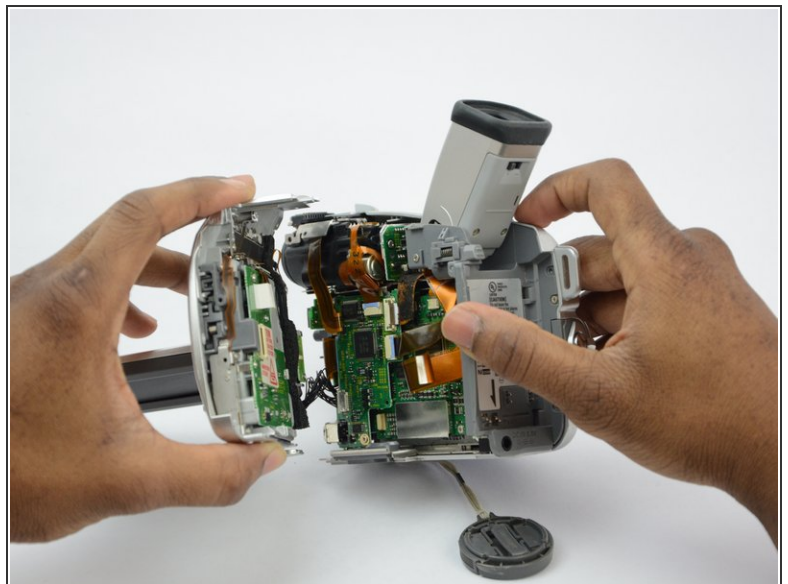
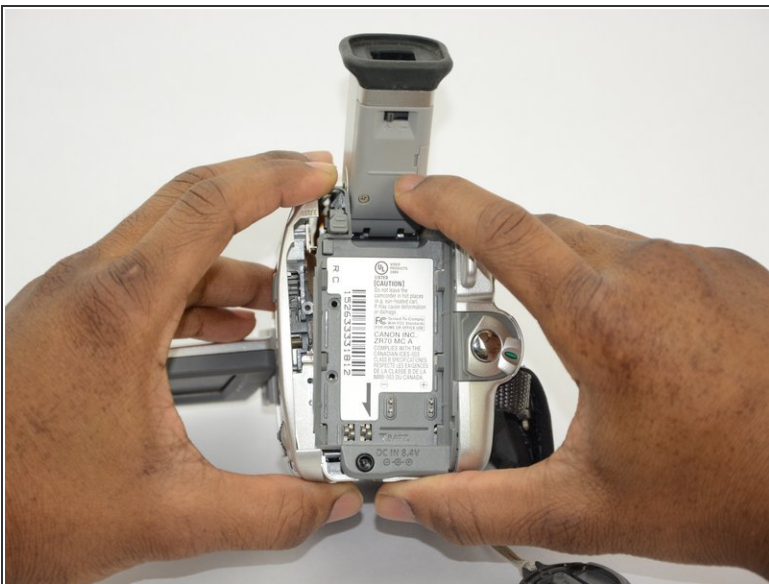


## Step 9



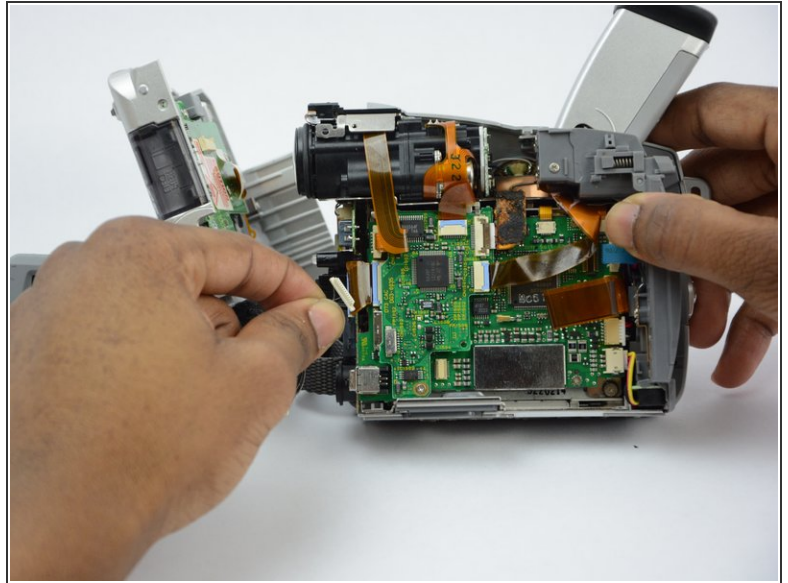
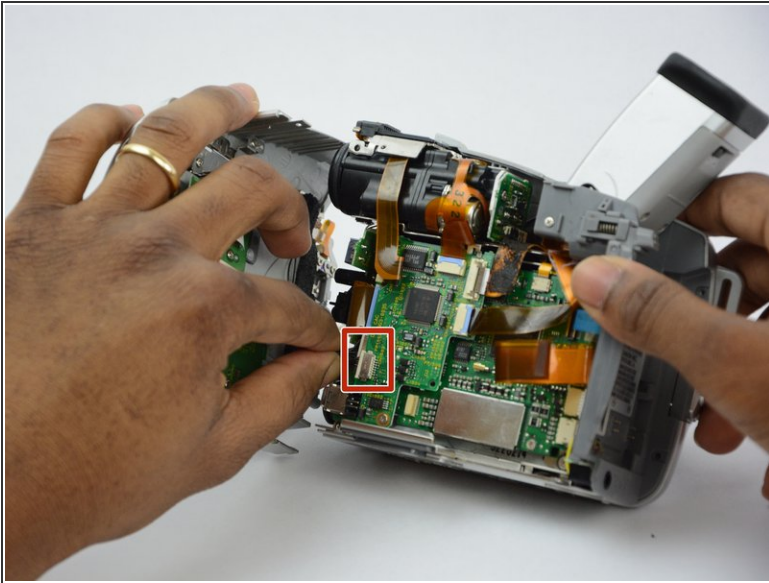
- Turn the camcorder so that the back is facing you.
- Remove the 3.75 mm screws from the back of the camcorder that hold the side panel in place.

## Step 10



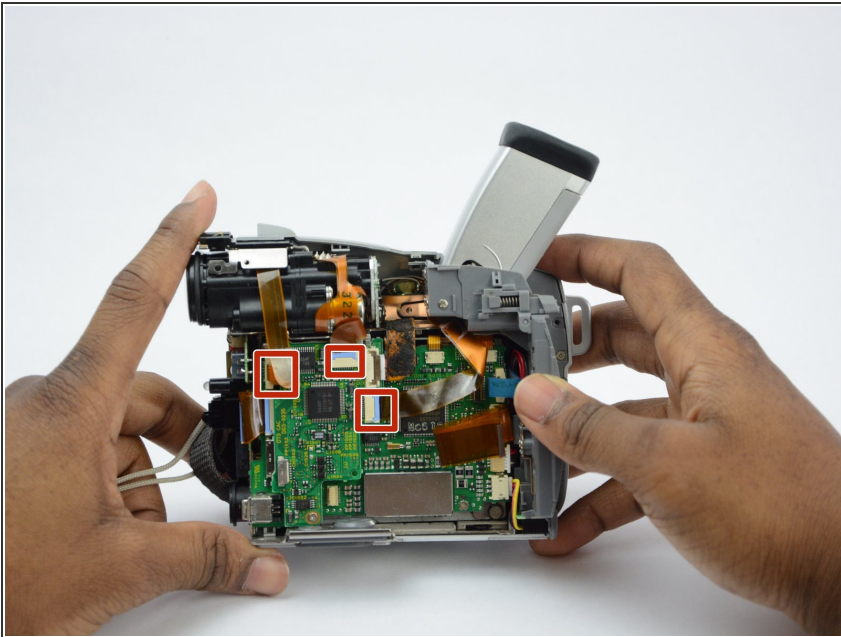
- Now that all of the screws are removed, gently pull off the side panel of the camcorder.

## Step 11



- Gently pull the two black wires from their connections. These black wires are the only thing left connecting the side panel to the main body of the camcorder.

## Step 12



- Gently pull the orange films out of their connections. This will allow you access to all components of the main body.

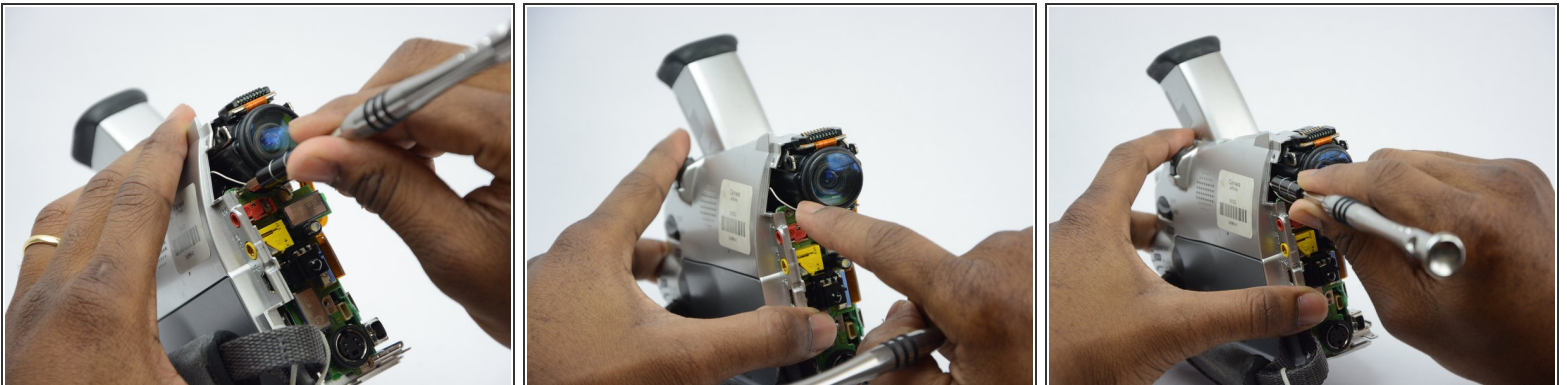


## Step 13 — Lens



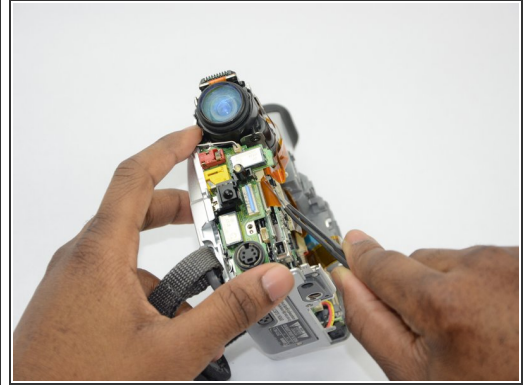
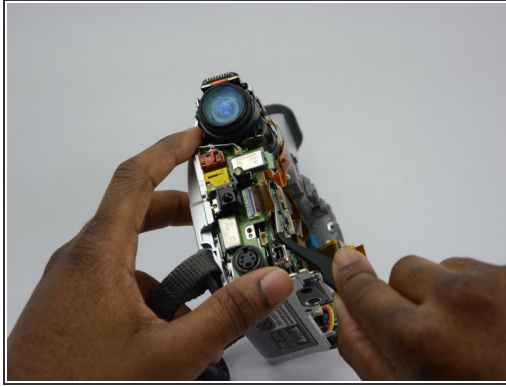
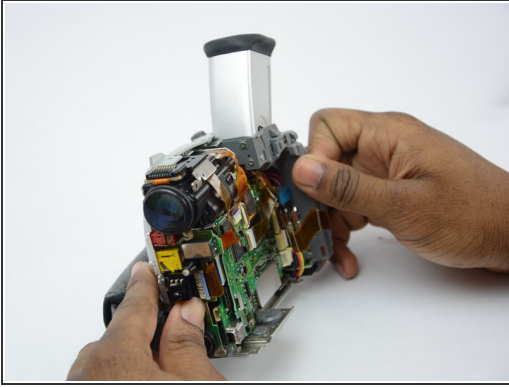
- Locate the four 3.5 mm screws on the top of the camcorder that holds the lens in place.
- Remove the four 3.5 mm screws.
- Remove the metal plate that the screws were holding down.

## Step 14



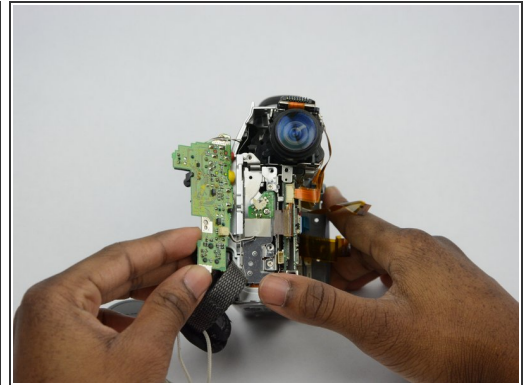
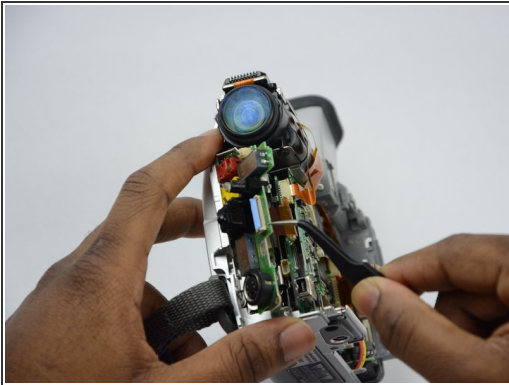
- Remove the first 2.75 mm screw that holds the lens in place.
- The second 2.75 mm screw that holds the lens in place is difficult to see. If you look directly into the "hole" beside the lens you will see the 2.75 mm screw.
- Remove the second 2.75 mm screw.

## Step 15



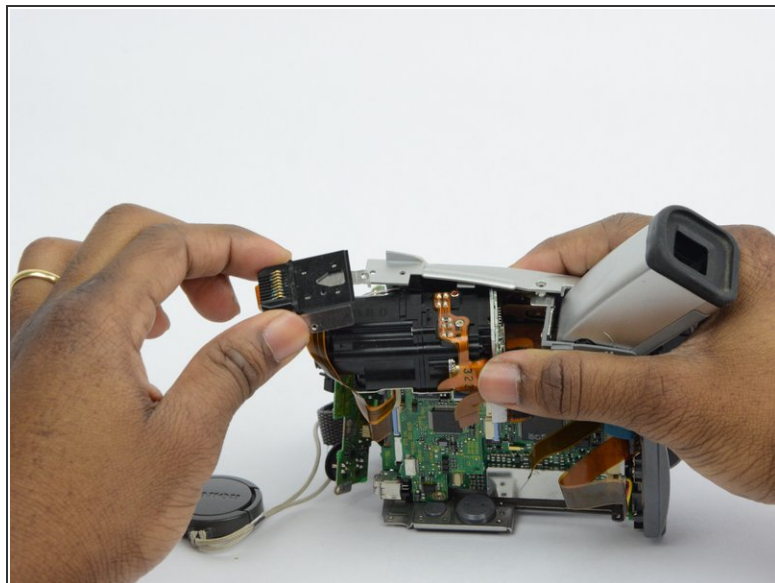
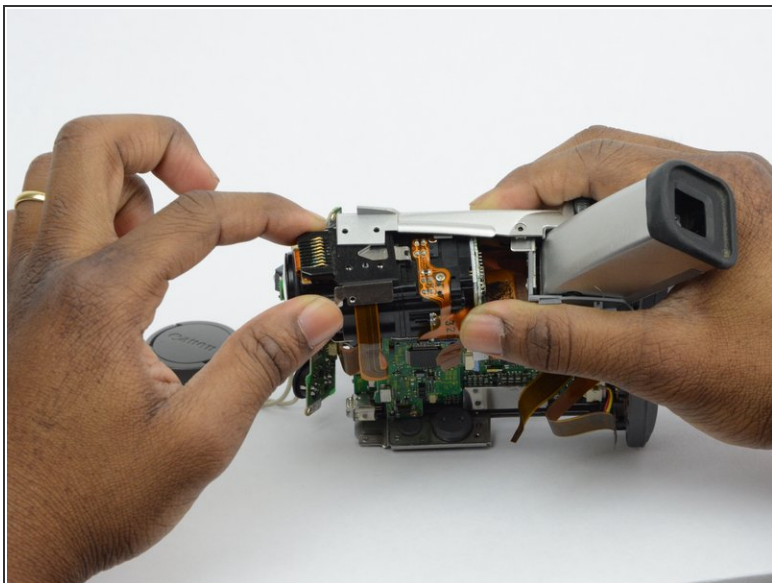
- Turn the camera so that you can see the orange film that needs to be pulled away.
- Use tweezers to gently pull the orange film away from the connection.

## Step 16



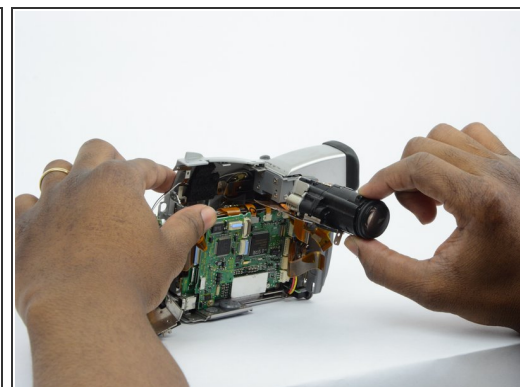
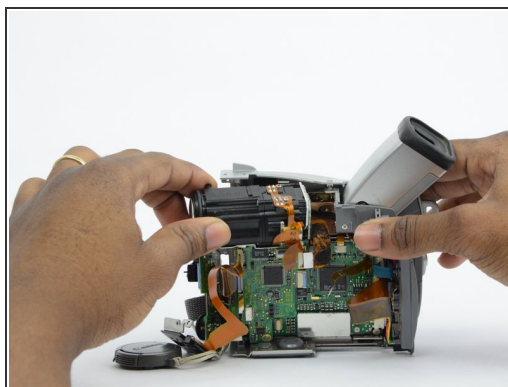
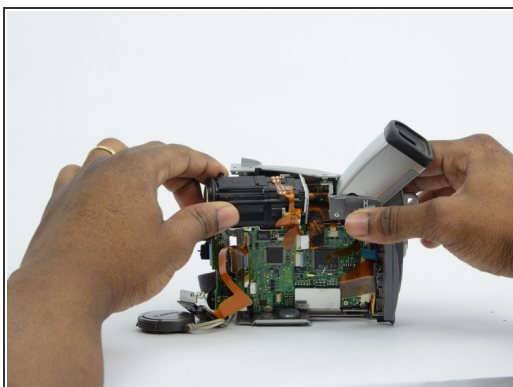
- Use the tweezers to pull the green circuit board away from the main body of the camcorder.
- Pull out the white wire from its connection so that the green circuit board can be completely removed from the main body of the camcorder.
- Removing this green circuit board allows access to the camcorder lens.

## Step 17



- Remove the final black metal plate that is holding the lens in place.

## Step 18



- Remove the camcorder lens.

To reassemble your device, follow these instructions in reverse order.