



# Capresso Infinity Power Cord Replacement

How to replace a Capresso Infinity power cord.

Written By: Elizabeth Roach



---

## INTRODUCTION

Does your Capresso Infinity Coffee Grinder not turn on? Has the power cord started to fray? If so, there might be an issue with your power cord. Here is a guide to replace your Capresso Infinity power cord. All you need is a Torx Security T10 Bit Screwdriver and a 2.0 Flathead Screwdriver in order to remove the screws to replace the power cord.



### TOOLS:

- [T10 Torx Security Bit Screwdriver](#) (1)
  - [Flathead Screwdriver](#) (1)
-

## Step 1 — Metal Outside Casing



- Twist the top plastic container to the left counterclockwise.
- Pull upwards to remove.

## Step 2



- Twist the top burr to the left counter clockwise.
- Pull upwards to remove.

### Step 3



- Flip entire device upside down.
- Remove two rubber coverings on the back of the device.

### Step 4



- Remove four 11.59mm T10 screws.
- ⓘ The screws will have small circular washers under them. Put them aside for reassembly.

## Step 5



- Lift the metal outside casing off the black base.
- Flip the outside casing forward so you have access to the inside of it.

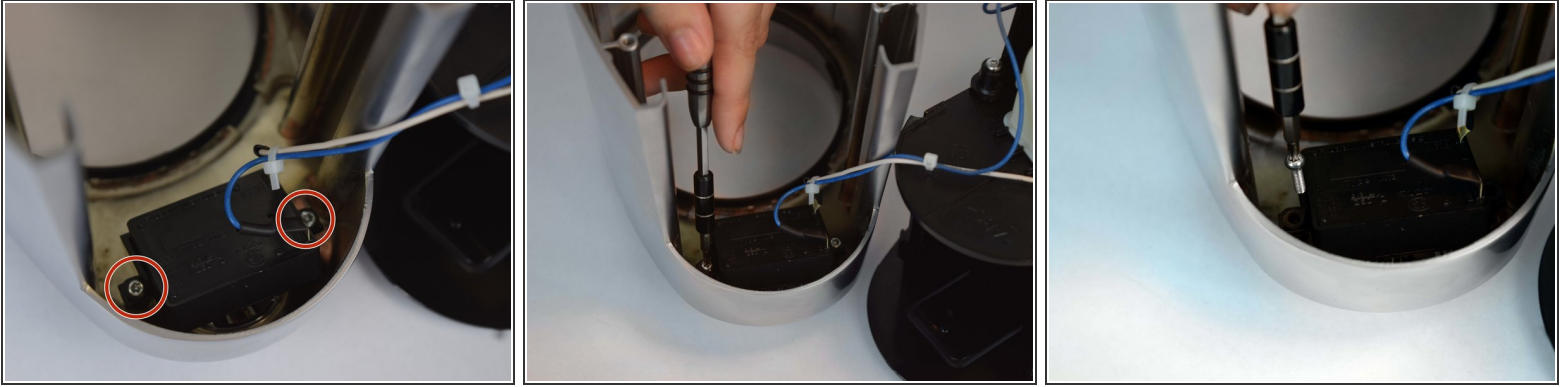
## Step 6



- Remove one 11.59mm T10 screw.
- Let the green wire fall, or place somewhere so it doesn't get in the way.
- ⓘ There will be a small metal retainer and washer, put them aside for reassembly.

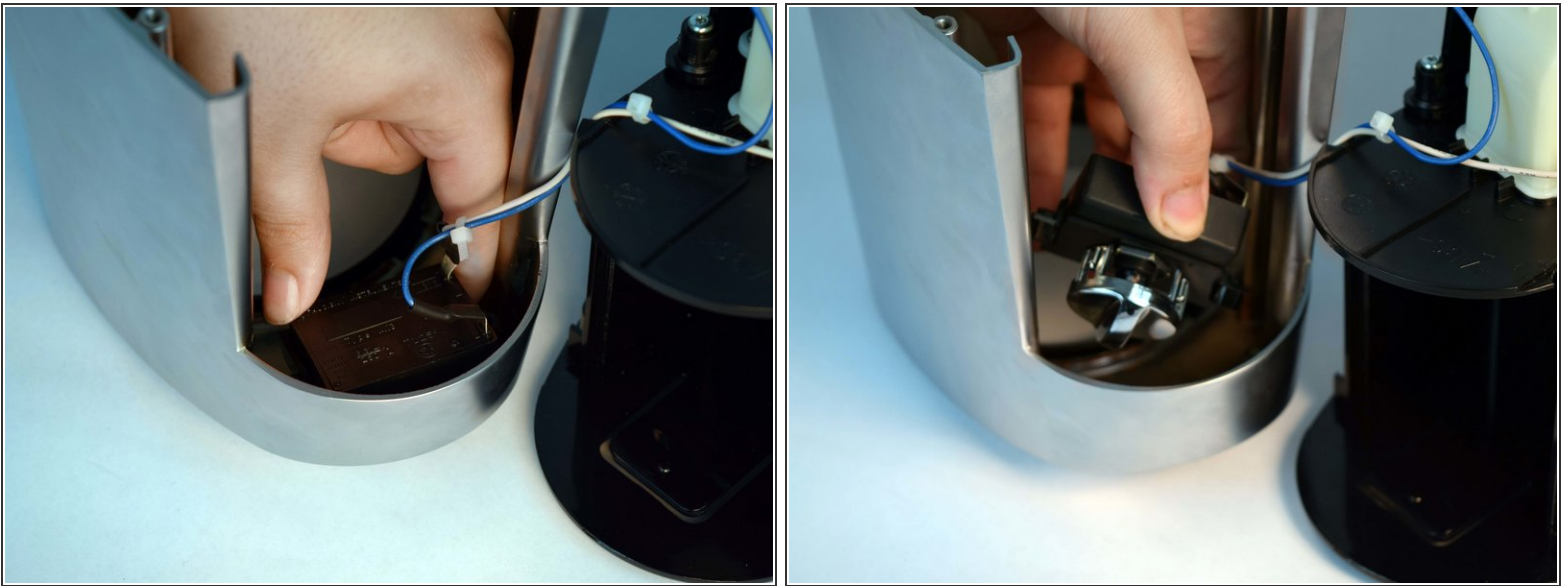


## Step 7



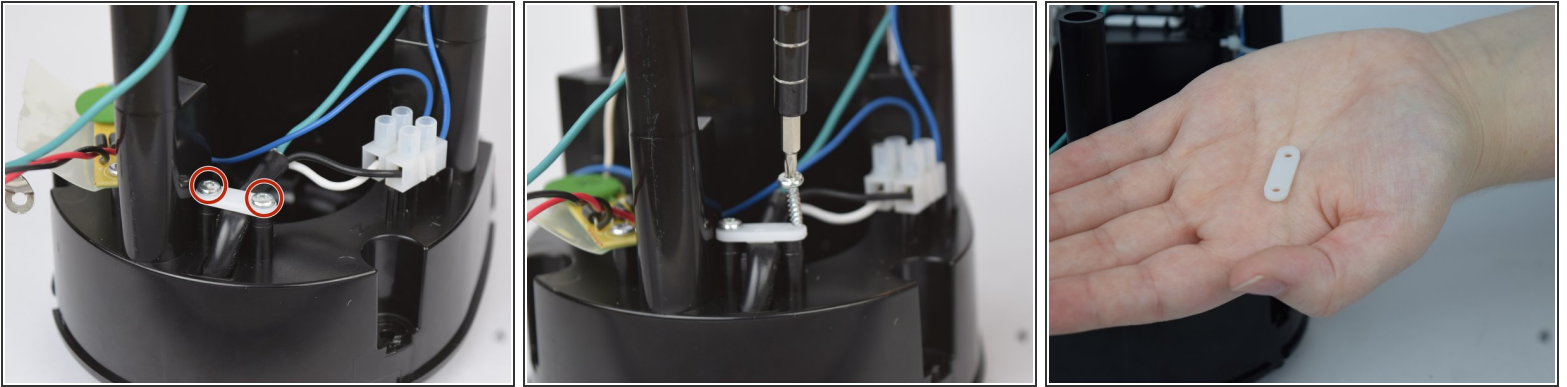
- Remove two 11.59mm T10 screws.

## Step 8



- Remove the time/on switch by pulling upwards.

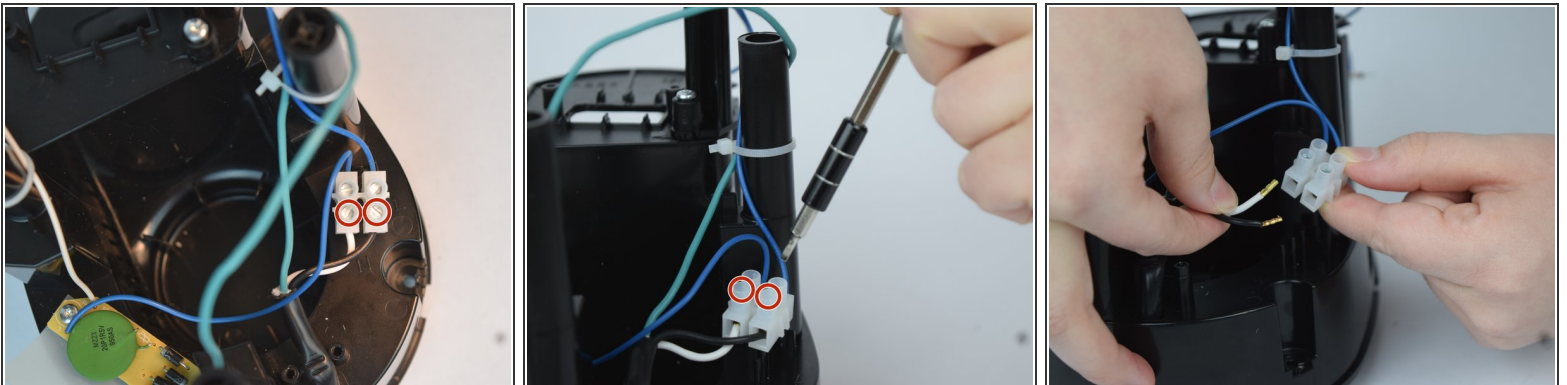
## Step 9 — Power Cord



- Remove two 13.60mm T10 screws.

**i** A white, flat plastic piece will have come loose. Place this to the side for reassembly.

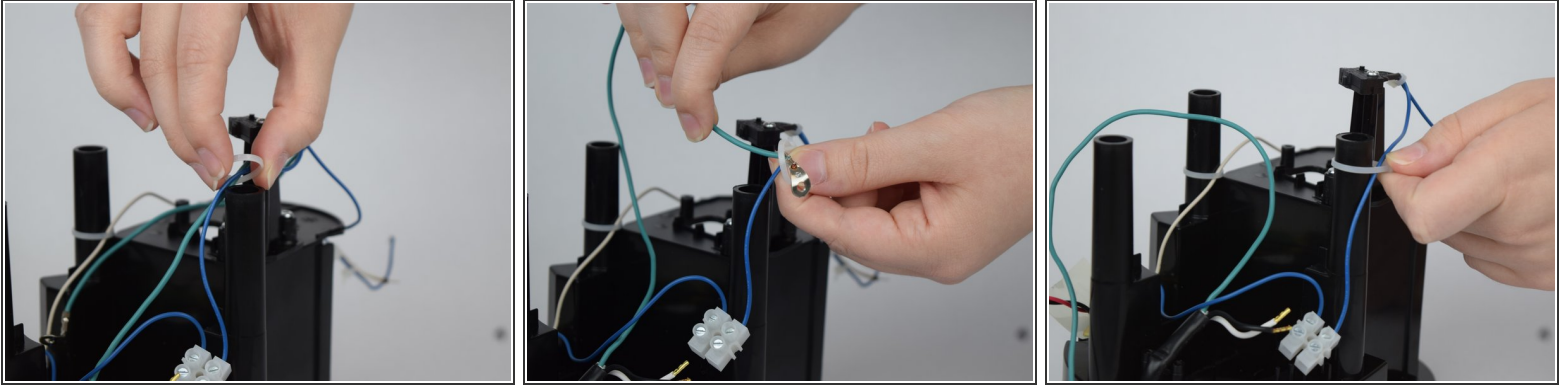
## Step 10



- Using a Flathead screwdriver loosen the two screws connecting the white and black wire to the plastic box.

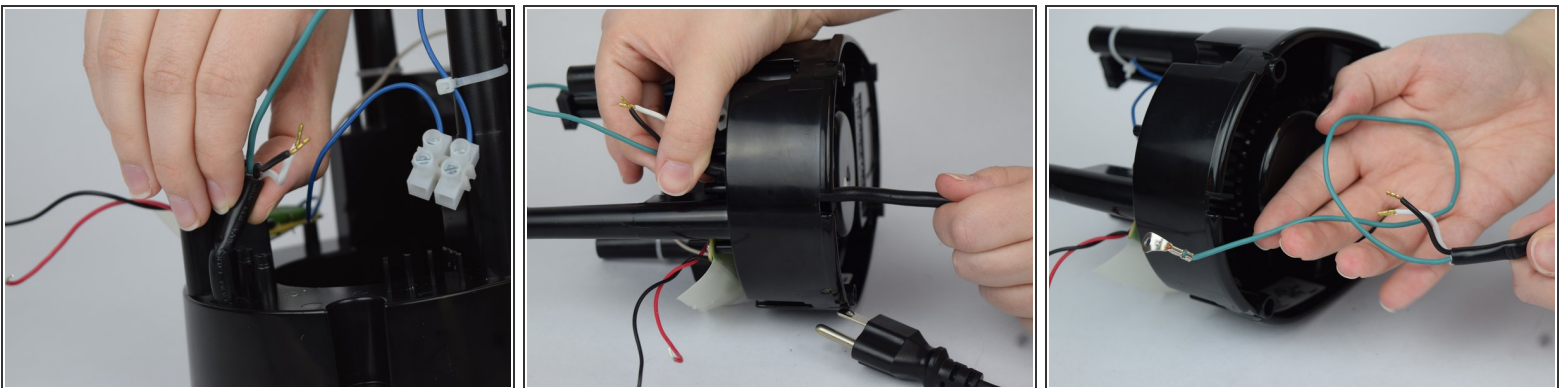
**i** Do not remove the screws from the box, but loosen them enough to disconnect the black and white wire.

## Step 11



- Originally attached to the inside of the outer casing, the green wire needs to be fed through the zip tie which keeps it in place.
- Lift up on the zip tie far enough to create a space to feed the green wire through.
- Place the zip tie back around the column that you lifted it from.
- All three wires that comprise the power cord should be detached from the coffee grinder.

## Step 12



- Feed the wires through the small hole at the bottom of the coffee grinder where the external power cord is located.
- Once the power cord is free of the coffee grinder, you are able to put in the new cord.

To reassemble your device, follow these instructions in reverse order.



