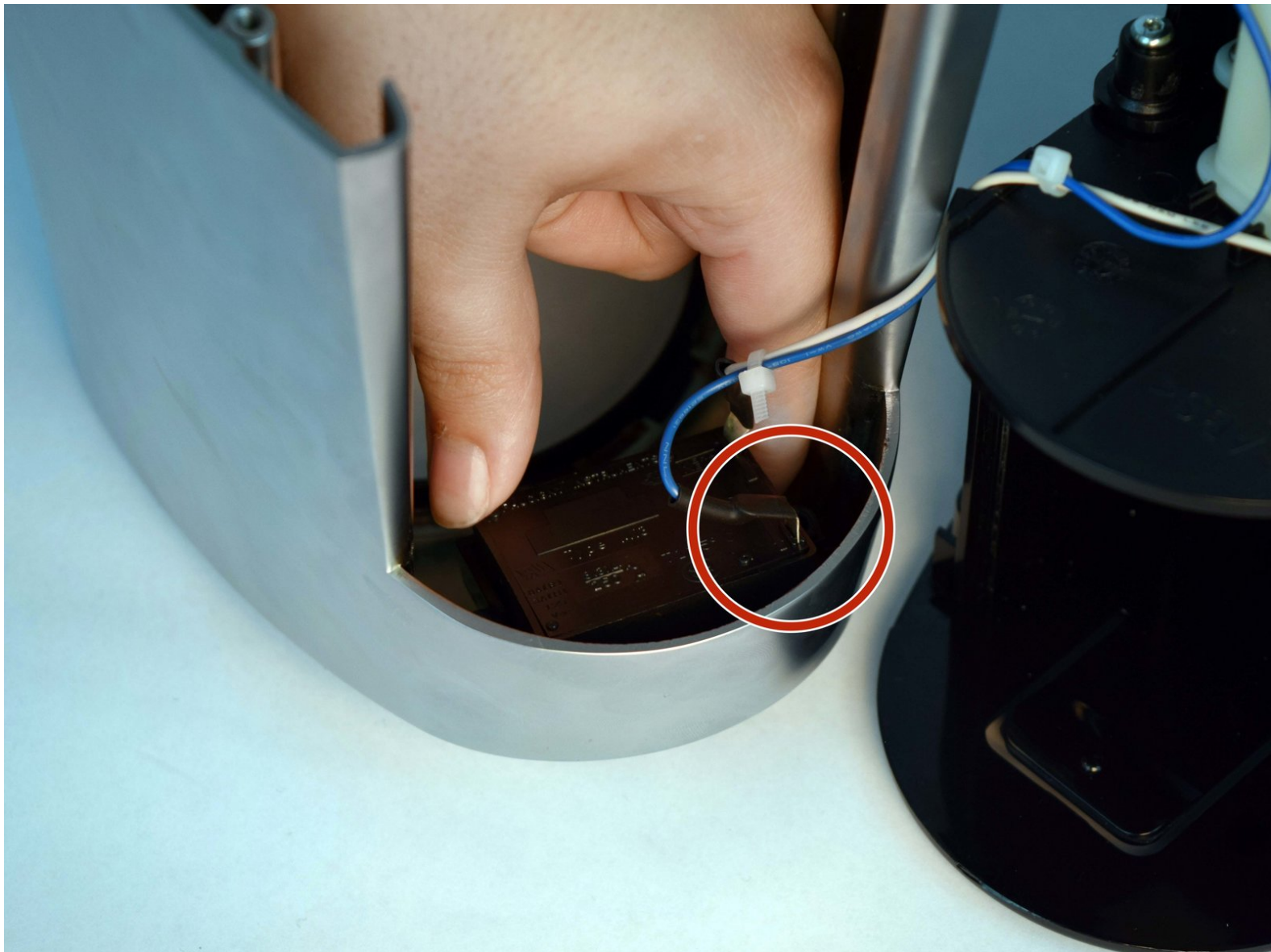




Capresso Infinity Timer/On Switch Replacement

How to replace a Capresso Infinity timer/on switch.

Written By: Melayne Spataro



INTRODUCTION

If you need to replace the timer/on switch, follow this guide. The timer/on switch is essential to how long the coffee beans take to turn into coffee grounds. For this guide, you will need the Torx Security T10 Bit Screwdriver, the extension bit, and a soldering iron.



TOOLS:

- [T10 Torx Security Bit Screwdriver](#) (1)
 - [Soldering Iron](#) (1)
-

Step 1 — Metal Outside Casing



- Twist the top plastic container to the left counterclockwise.
- Pull upwards to remove.

Step 2



- Twist the top burr to the left counter clockwise.
- Pull upwards to remove.

Step 3



- Flip entire device upside down.
- Remove two rubber coverings on the back of the device.

Step 4



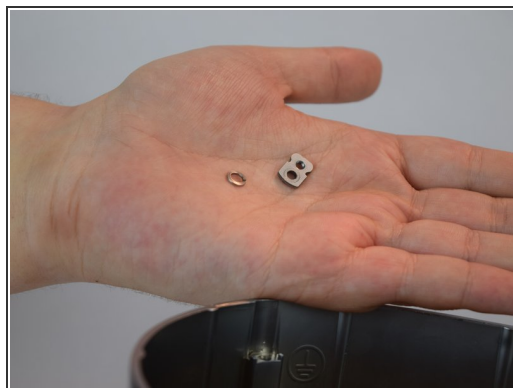
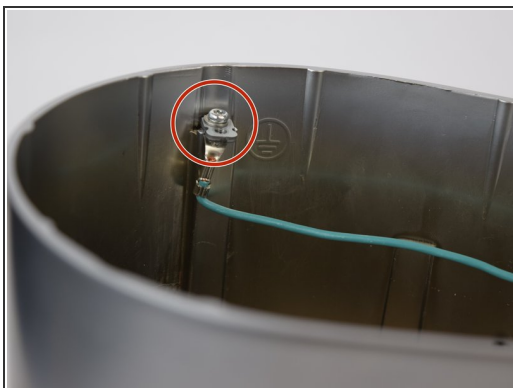
- Remove four 11.59mm T10 screws.
- ⓘ The screws will have small circular washers under them. Put them aside for reassembly.

Step 5



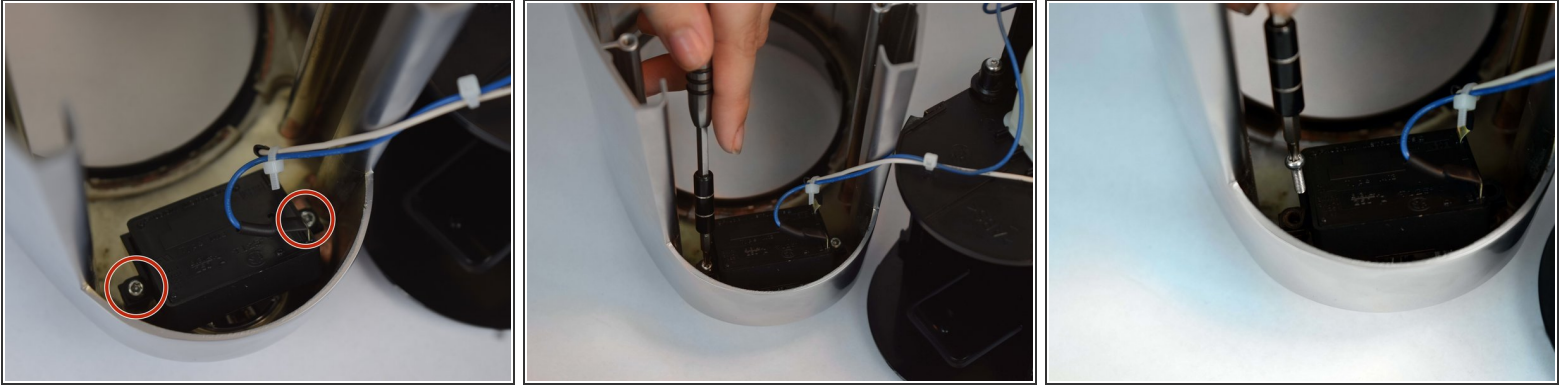
- Lift the metal outside casing off the black base.
- Flip the outside casing forward so you have access to the inside of it.

Step 6



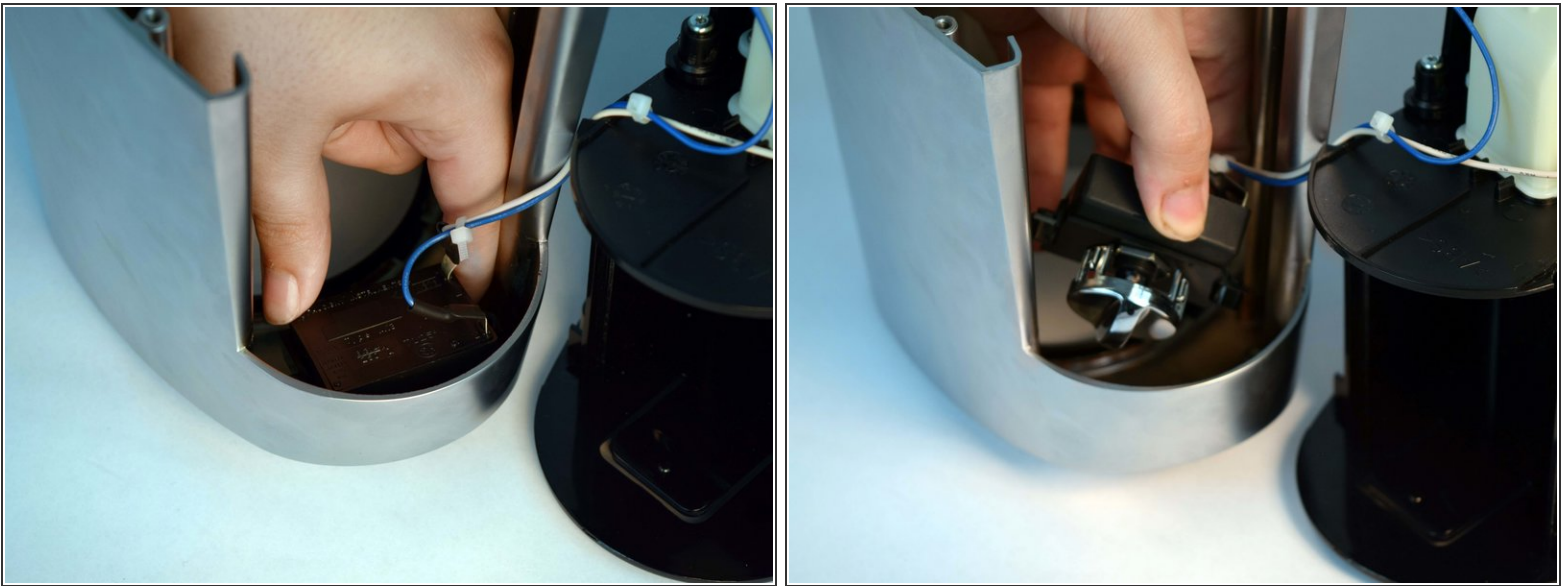
- Remove one 11.59mm T10 screw.
- Let the green wire fall, or place somewhere so it doesn't get in the way.
- ⓘ There will be a small metal retainer and washer, put them aside for reassembly.

Step 7



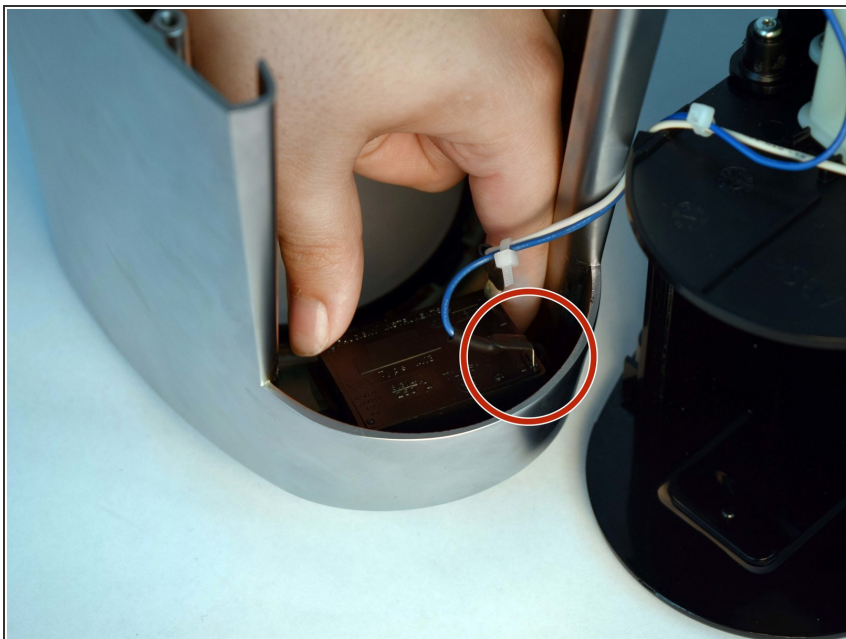
- Remove two 11.59mm T10 screws.

Step 8



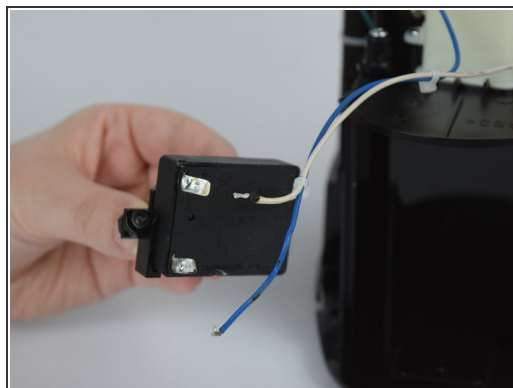
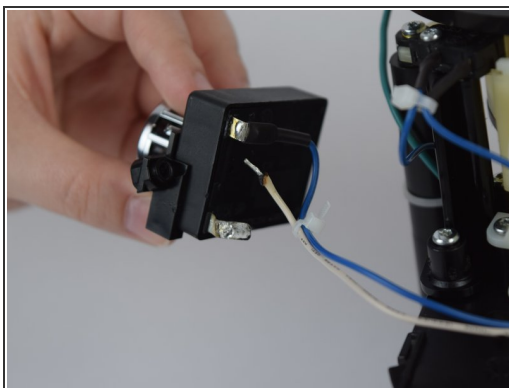
- Remove the time/on switch by pulling upwards.

Step 9 — Timer/On Switch



- Strip the two wires of their black covering connecting them to the black box.

Step 10



- Solder the two cords holding in the blue and white wire in the black timer box.

To reassemble your device, follow these instructions in reverse order.