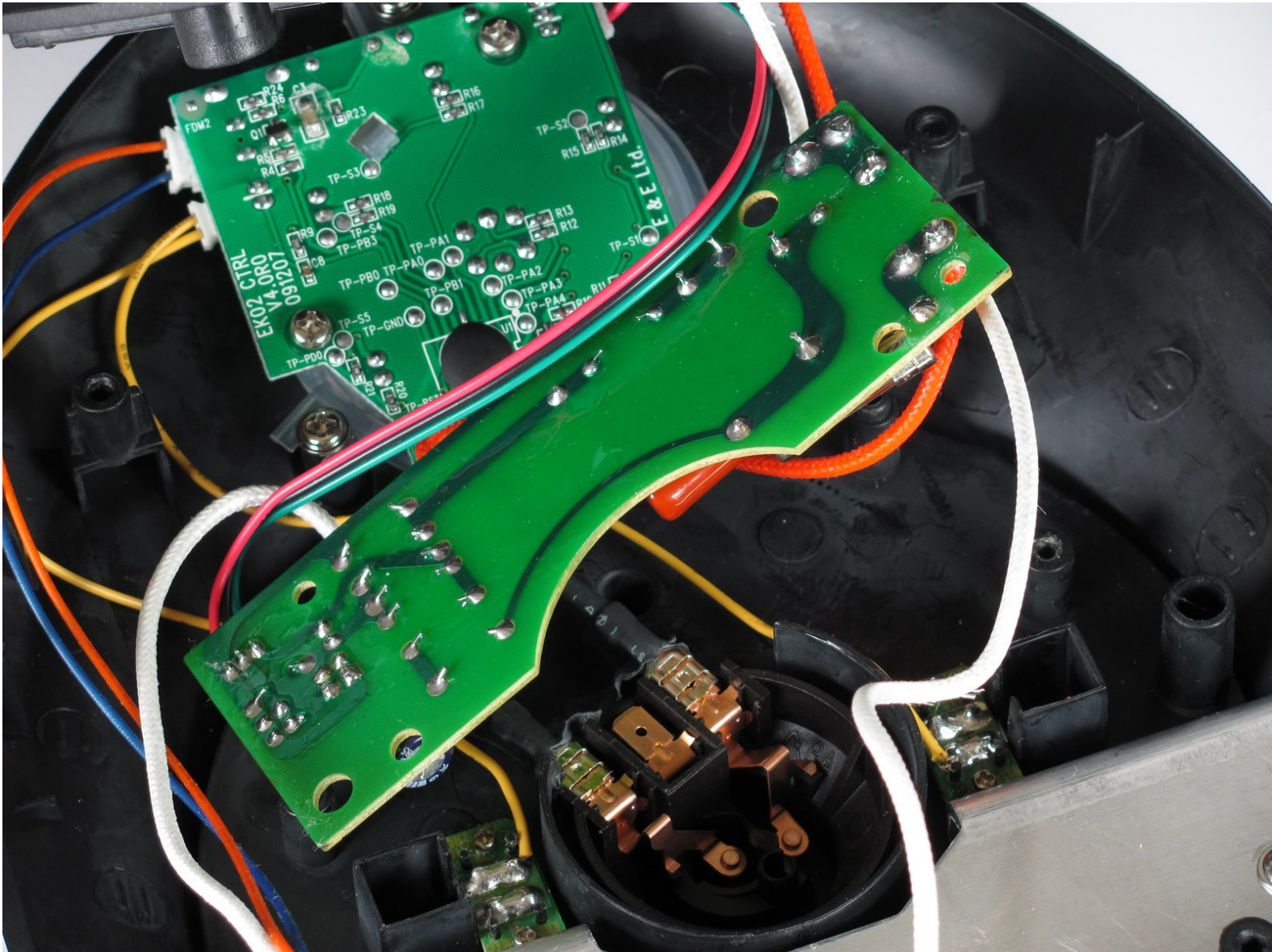




# Capresso Perfectea 260 Motherboard Replacement

Replace the motherboard with the Capresso Prefectea 260.

Written By: Rohin Chander



---

## INTRODUCTION

This guide will teach you how to replace the motherboard within the Capresso Perfectea.

---



### TOOLS:

- [Phillips #2 Screwdriver](#) (1)
  - [Metal Spudger](#) (1)
-

## Step 1 — Motherboard



- First, take the base of the device and flip it over.

## Step 2



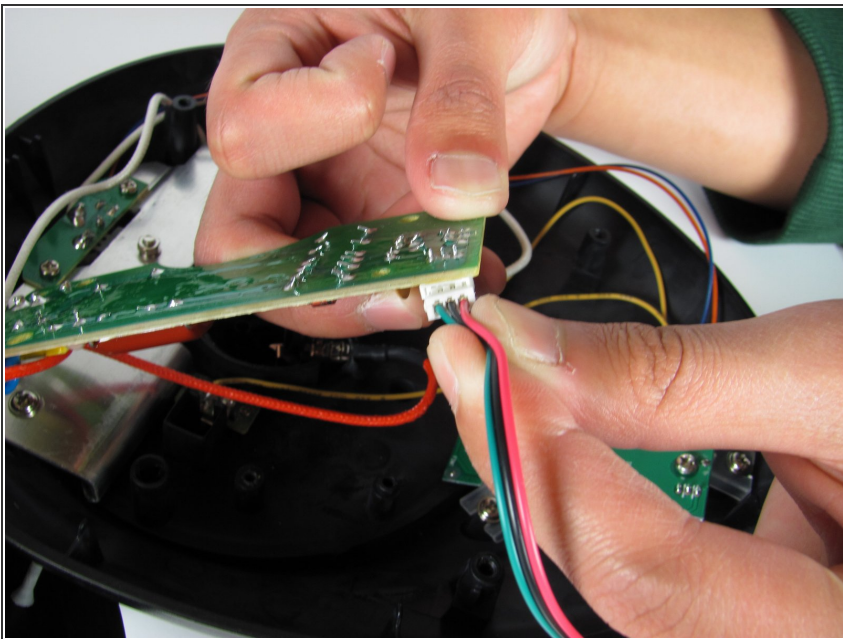
- Remove the four 12 mm Phillips #2 screws surrounding the base then lift the bottom half of the base to expose the circuit boards inside the device.

### Step 3



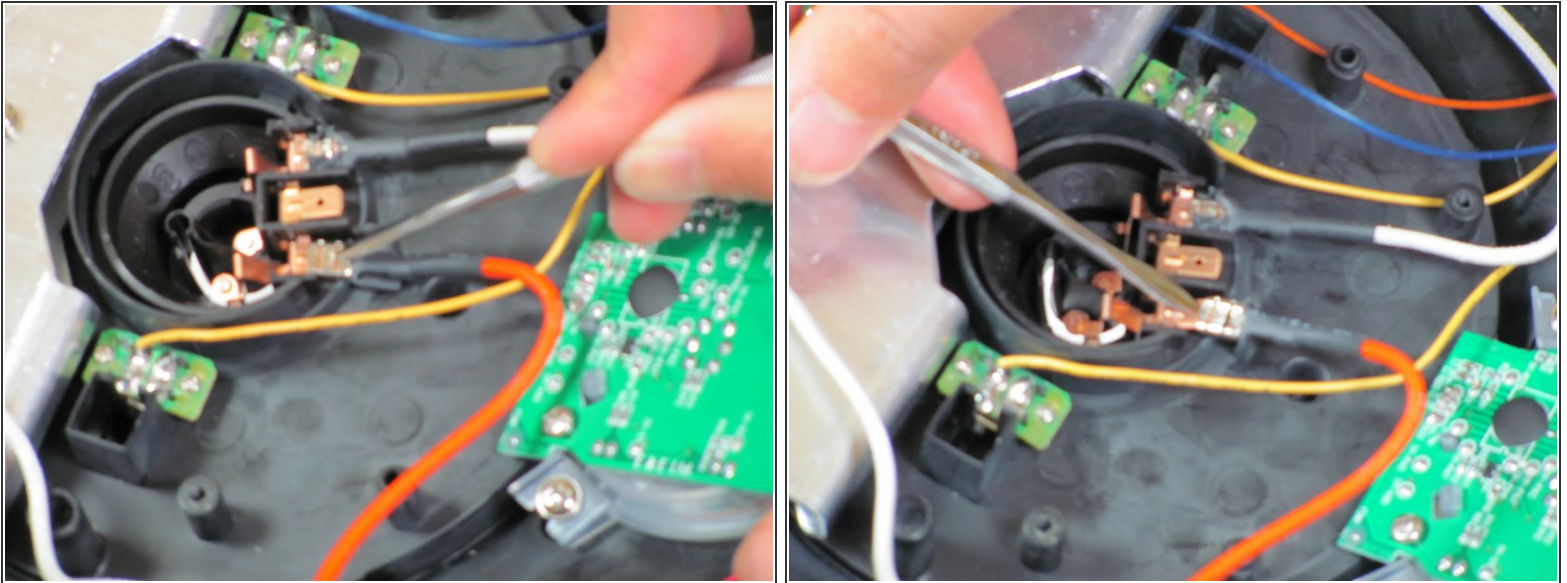
- Remove the two 7.5 mm Phillips #2 screws holding in the motherboard

### Step 4




- Unplug the wire going into the side of the motherboard

## Step 5



- Use the metal spudger to cut open the rubber covering the latch where it clamps onto the copper tab.
- Unplug wire at heating element by first using the metal spudger to push the latch in and then pushing it out.

 Be careful when unplugging the wire as if it is done too forcefully it can damage the connection and make it difficult to connect a new motherboard

## Step 6



- Lift the motherboard out of the device

To reassemble your device, follow these instructions in reverse order.