



# Caribou Coffee CC-EKV8SS7 Safety Shutoff Mechanism Replacement

Replacing the base's safety shutoff mechanism.

Written By: Melanie Preston



## INTRODUCTION

Located between the power source and the boiling arm, this safety mechanism automatically shutsoff the flow of power when the kettle is uncoupled from the base.


---

### **TOOLS:**

- [Tri-point Y0 Screwdriver](#) (1)
  - [Spudger](#) (1)
-

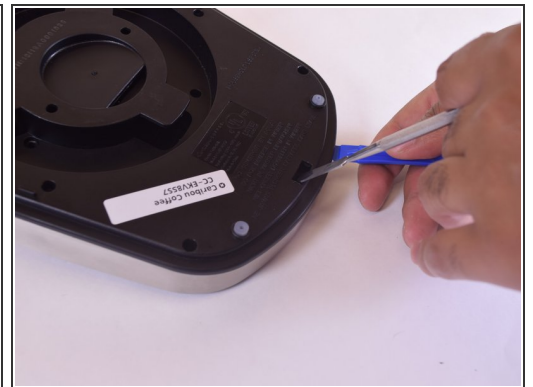
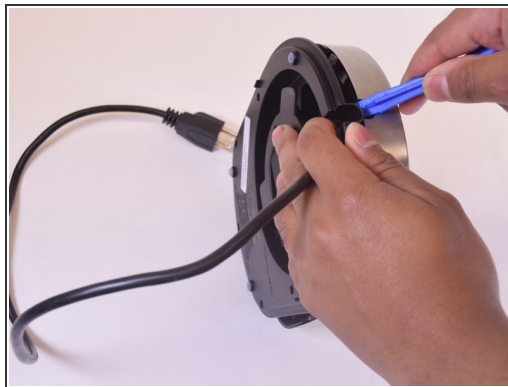
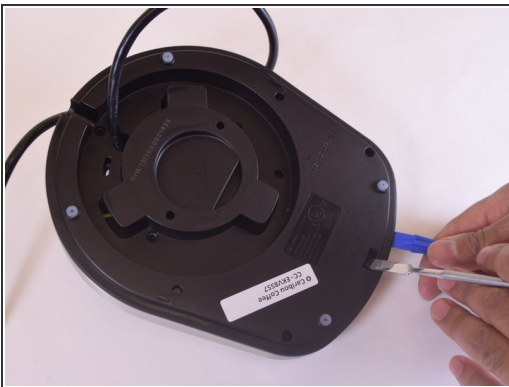
## Step 1 — Caribou Coffee CC-EKV8SS7 Base Disassembly



 Unplug the unit before disassembling to avoid electrocution.

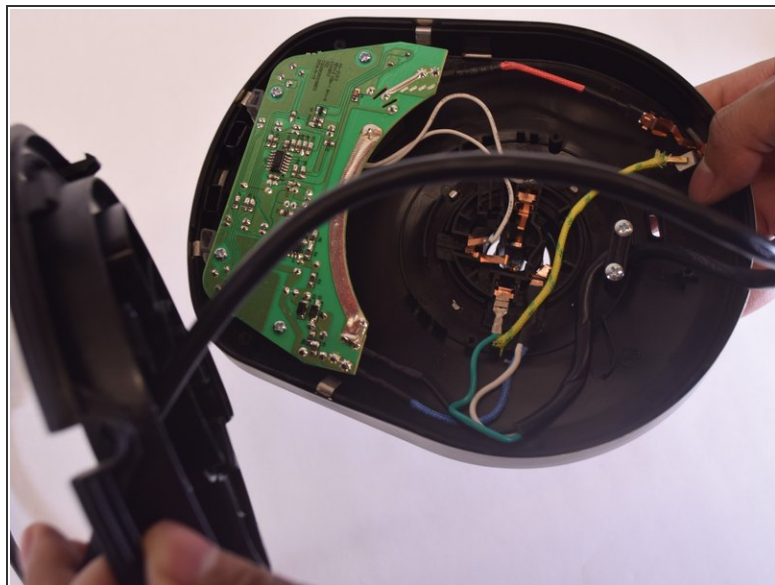
- Remove the five (10mm) Y screws from the bottom of the base. Three are in a triangle around the center and two are on the corners of the flat edge.

## Step 2



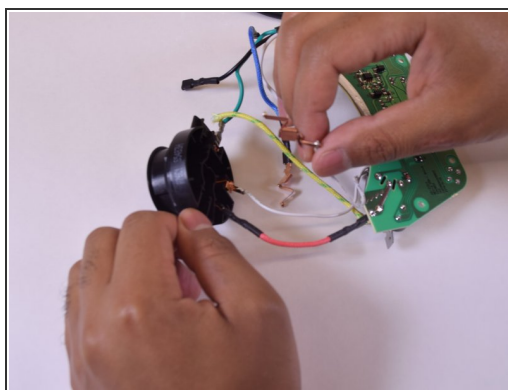
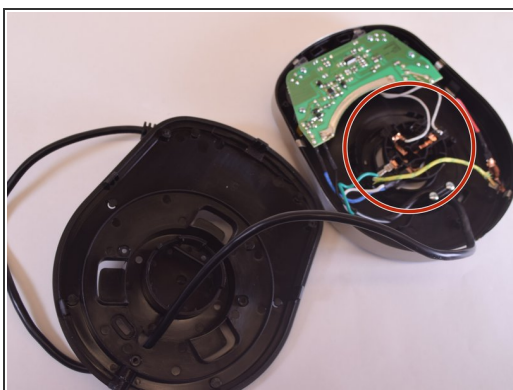
- Now you will need to 'unlock' the top and bottom of the base from each other. On the flat edge, there is a rectangle inset with one side cut out. Insert a metal spudger about 1/2" in to the opening to toggle open an interior tab.
- With the metal tool still inserted, use an opening tool between the black and silver sides to pry the base open.

### Step 3



- Once you have the halves opened at least 1/4", remove the metal key and rotate the base a quarter turn in any direction.
- Continue using the spudger to pry open the base at each quarter turn until the sides separate easily.
- ⓘ The black bottom will catch on the power cord plug, to prevent total dismantlement.

### Step 4 — Safety Shutoff Mechanism



- To uninstall the element, start by removing the 4 copper connectors and 1 metal tab from the power cord. This will require you to wiggle and pull the connectors out.
- Once those pieces are detached, you can insert them into the replacement part, as they were.

To reassemble your device, follow these instructions in reverse order.