



Casio Exilim EX Z55 Back Case Replacement

How to replace or remove the back case of this camera. (Front and Back case come off simultaneously)

Written By: Laura



INTRODUCTION

This guide shows how to remove the back case of the camera to replace a damaged back case or access the inner parts of the camera.



TOOLS:

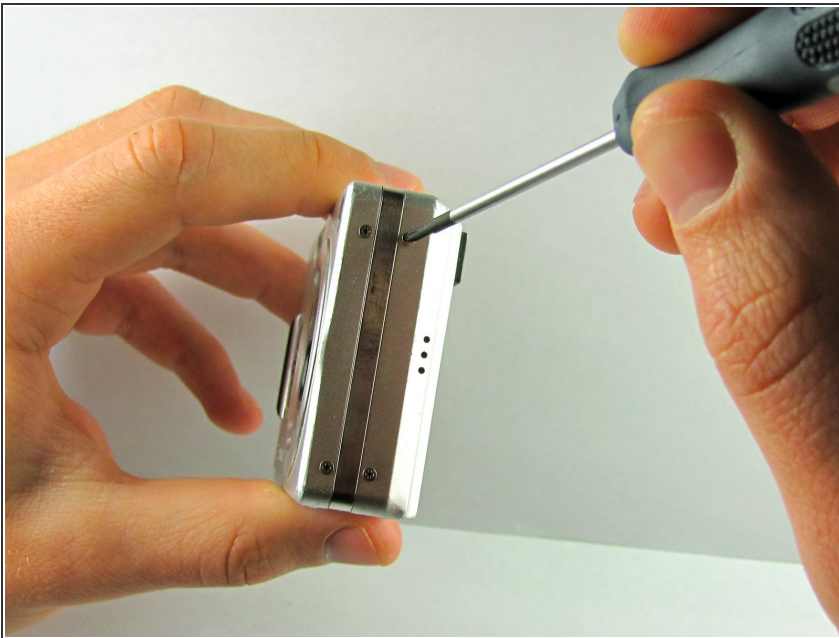
- [Phillips #00 Screwdriver](#) (1)
-

Step 1 — Front Case



- Locate 12 screws. Four on the left, four on the right, and four on the bottom.

Step 2



- Using the #00 Phillips screwdriver, remove the four 3.66mm screws from the bottom outer case, and the eight 1.75mm screw from the sides of the case.

Step 3



- Separate the front case from the body of the camera.

Step 4 — Back Case



- Separate the back case from the body of the camera.

To reassemble your device, follow these instructions in reverse order.