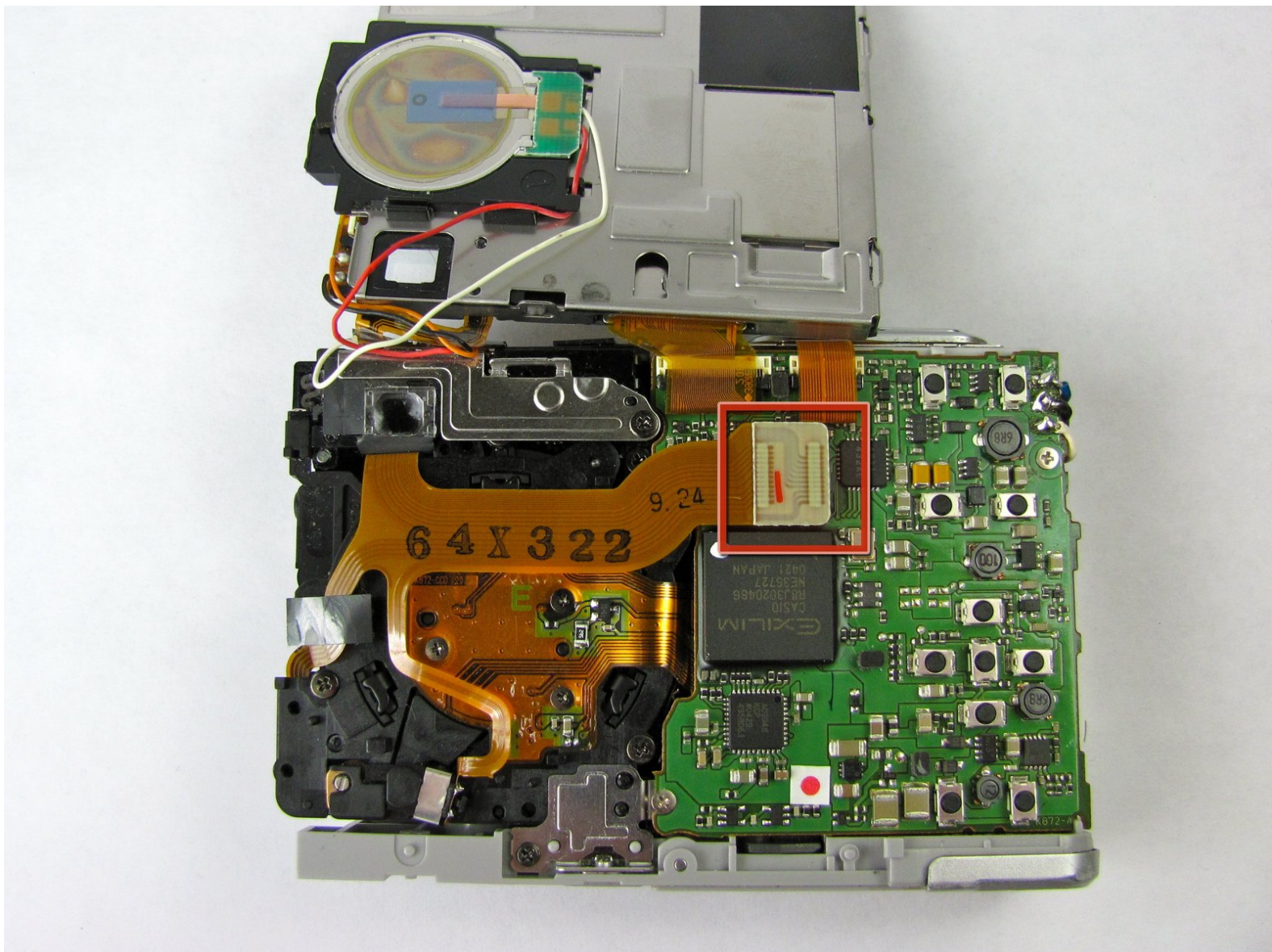




Casio Exilim EX Z55 Motherboard Replacement

How to install the camera's motherboard

Written By: Taylor





TOOLS:

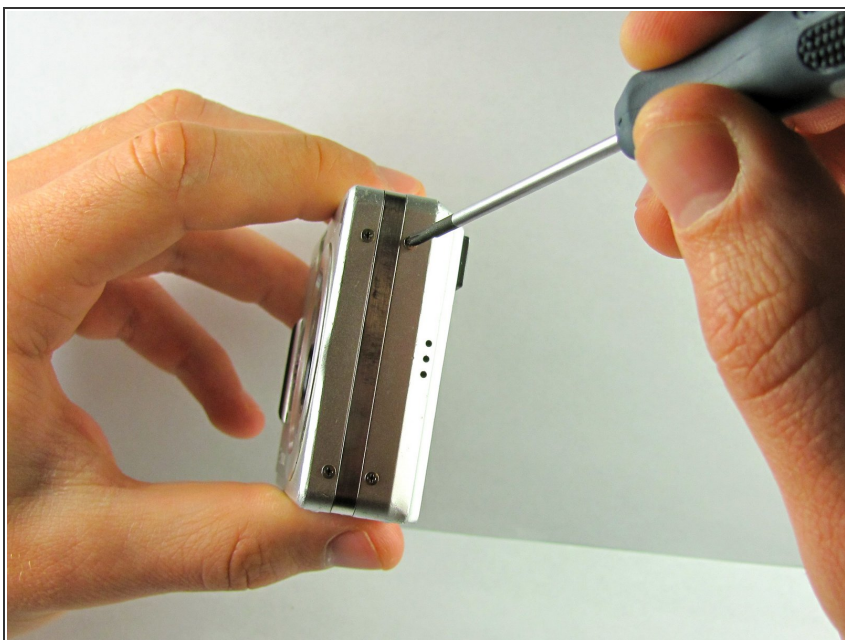
- [Phillips #00 Screwdriver](#) (1)
 - [iFixit Opening Tools](#) (1)
-

Step 1 — Front Case



- Locate 12 screws. Four on the left, four on the right, and four on the bottom.

Step 2



- Using the #00 Phillips screwdriver, remove the four 3.66mm screws from the bottom outer case, and the eight 1.75mm screw from the sides of the case.

Step 3



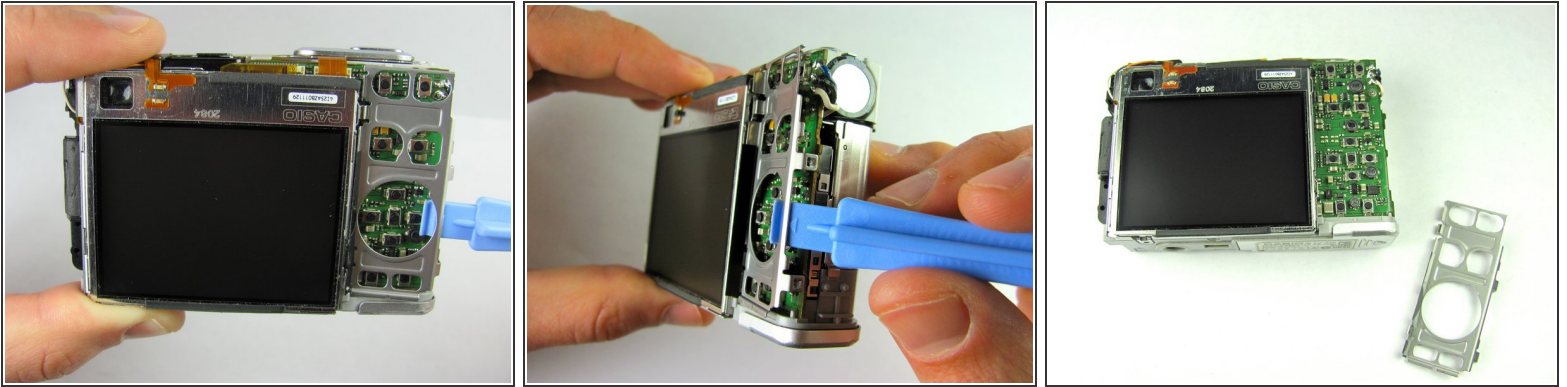
- Separate the front case from the body of the camera.

Step 4 — Back Case



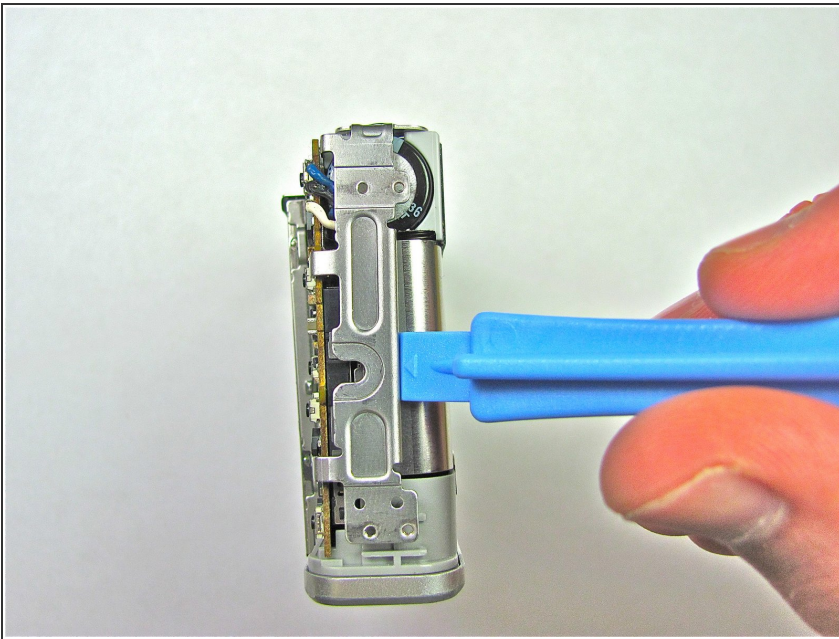
- Separate the back case from the body of the camera.

Step 5 — LCD Screen



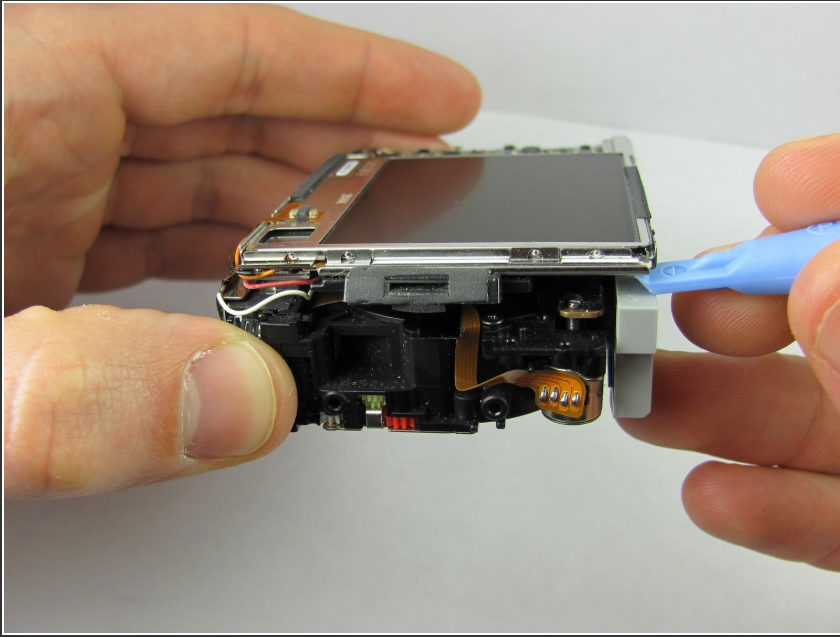
- Remove the metal grating located to the right of the LCD screen by inserting the plastic opening tool under the grating and pulling up.

Step 6



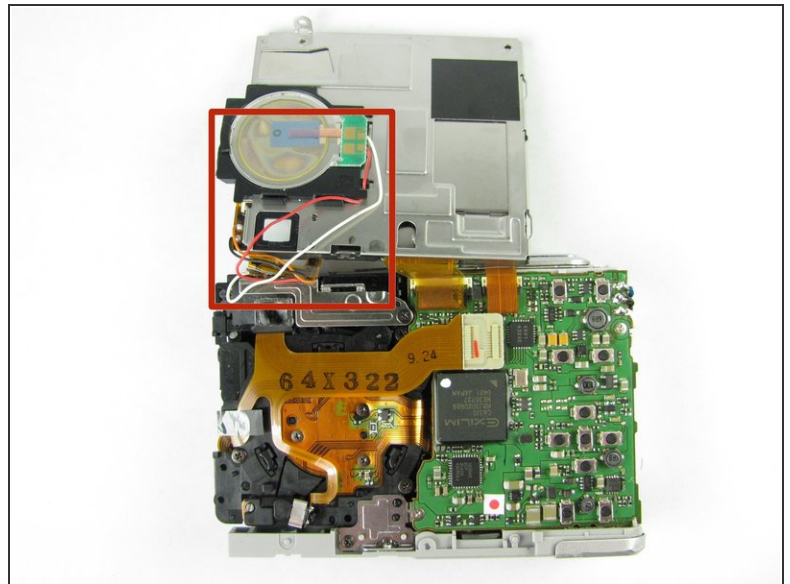
- Before removing the side metal bracket, first remove the attached strap knob by twisting it off.
- Then, remove the side metal bracket by inserting the plastic opening tool under the bracket and pulling up.

Step 7



- Using the plastic opening tool, pry up the LCD screen starting at one of the corners. Insert the tool under one of the corners and lift up.

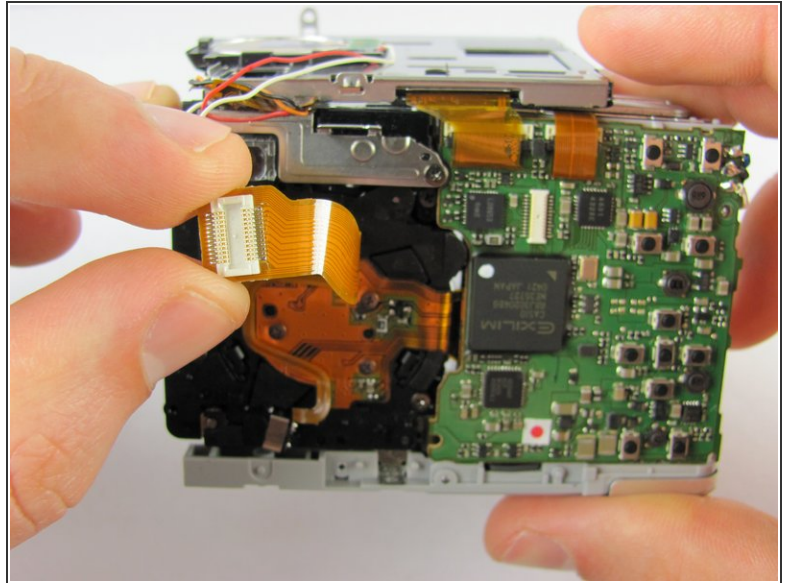
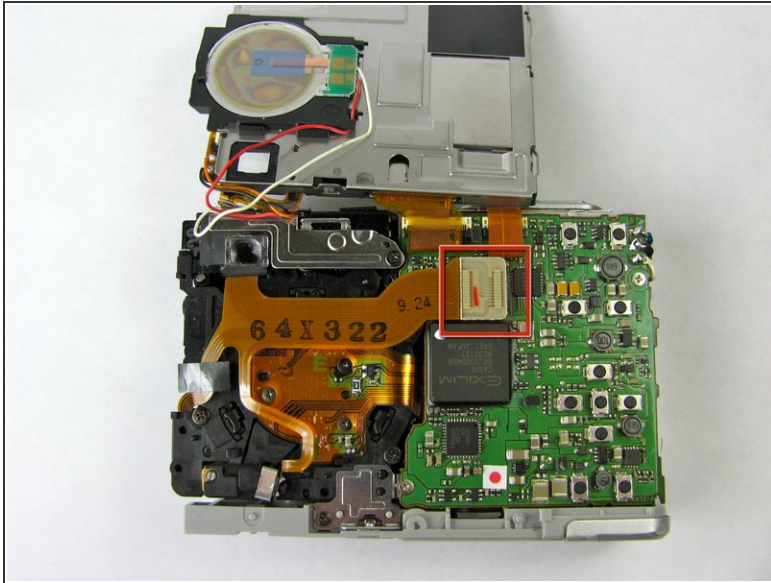
Step 8



- Continue to lift the LCD screen all the way up.

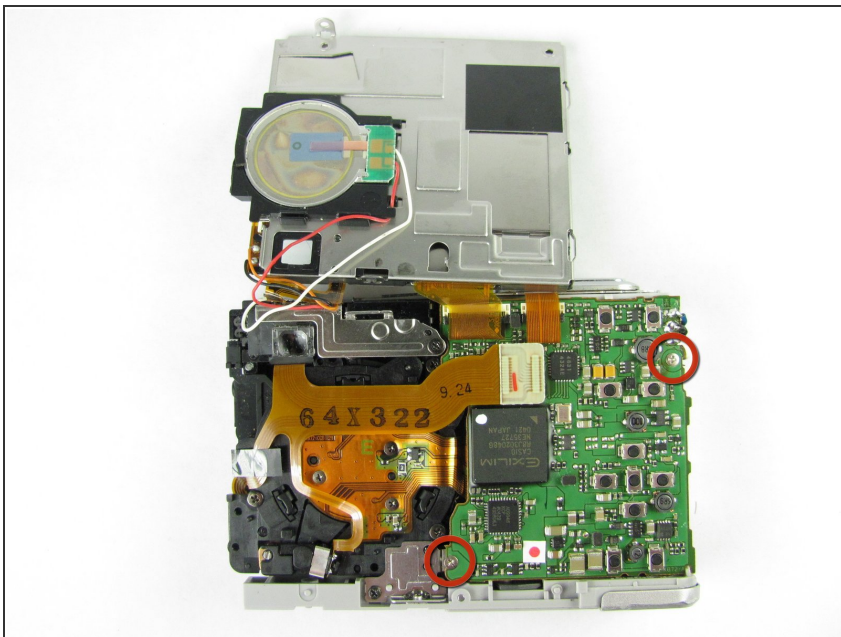
⚠ Be careful not to rip any wires connecting the LCD screen to the top of the camera.

Step 9 — Motherboard



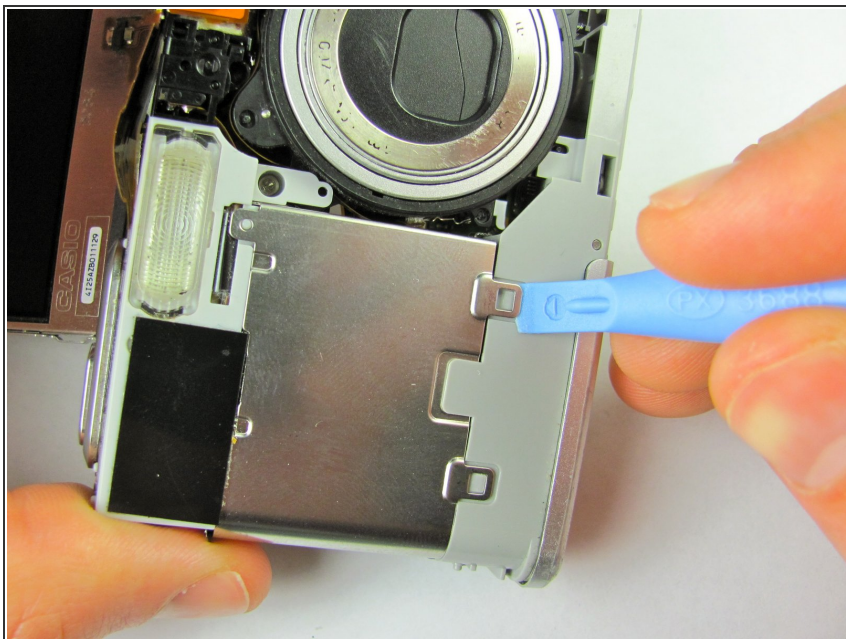
- Remove the orange strip by grabbing the white tab and pulling.

Step 10



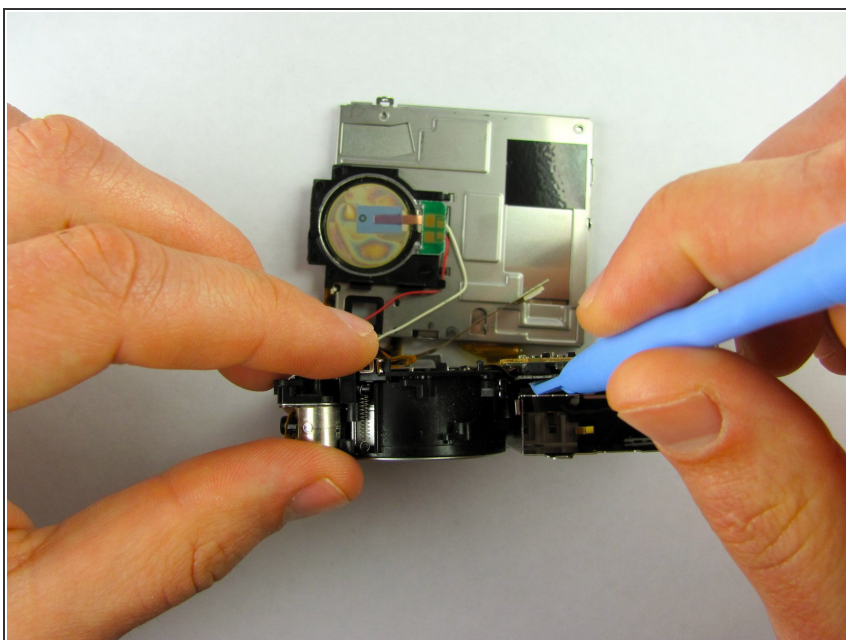
- Remove the two 1.68mm screws located on the motherboard, using a #00 Phillips screwdriver.

Step 11



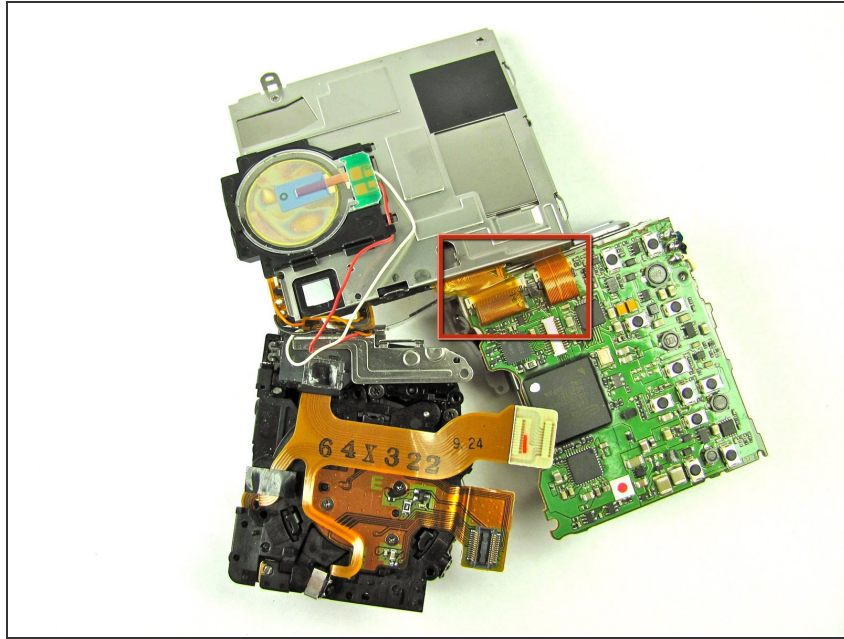
- Using the plastic opening tool, pry the battery case clamps (located on front of the camera) so that the bottom will come loose.

Step 12



- Detach the inner orange strip from the motherboard to the lens by inserting the plastic opening tool under the tab and lifting up.

Step 13



- Fully remove the motherboard from the lens.
- It will be still be attached by wires and a different orange strip.

To reassemble your device, follow these instructions in reverse order.