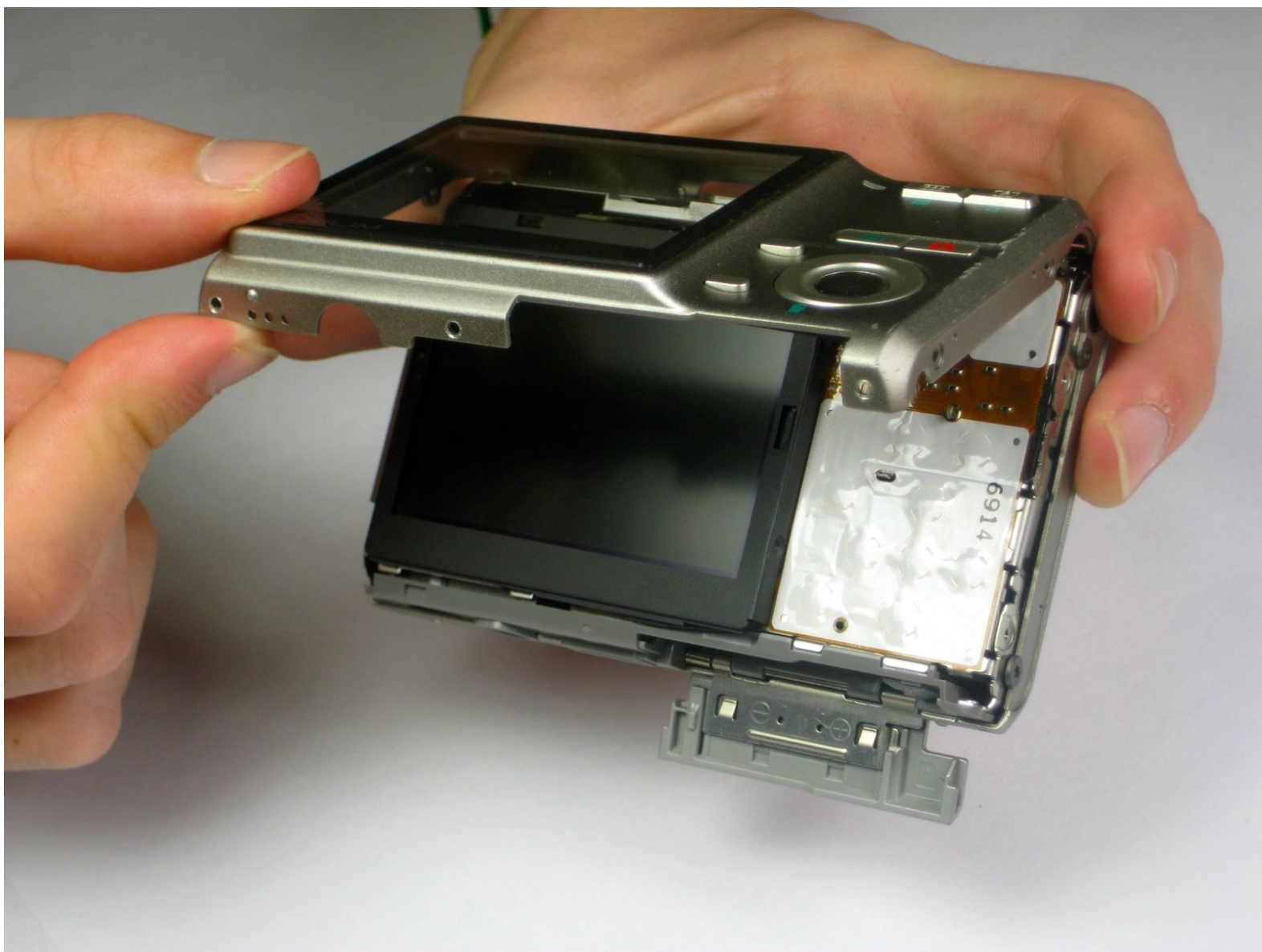




Casio Exilim EX-Z70 LCD Screen Replacement

This guide will go through the necessary steps needed to replace the LCD screen of the device in case it has cracked, stopped working, or malfunctioned in any other way.

Written By: Paul Fallon



INTRODUCTION

If the LCD screen has cracked, stopped working, or malfunctioned in any other way, you will need to replace the screen. This guide will break down the camera all the way to having a separate LCD screen from the camera. Follow the guide in reverse in order to install the new LCD screen.



TOOLS:

- [Soldering Workstation](#) (1)
 - [Tweezers](#) (1)
-

Step 1 — Camera Casing



- Remove the strap from the camera by pulling the thin cord out, creating a small loop, then pushing the thicker cord back through this loop.

Step 2



- Remove the two Phillips screws (2.83 mm) from the left side panel of the camera casing.
- The left panel can now be removed. However, one piece of tape attaches it to the camera, so a spudger may be required to ease the panels off.
- Repeat for the right side panel of the camera.
- ⓘ Keep track of which screws go where. There are a couple sets of screws to take out and they are all small and look the same.

Step 3



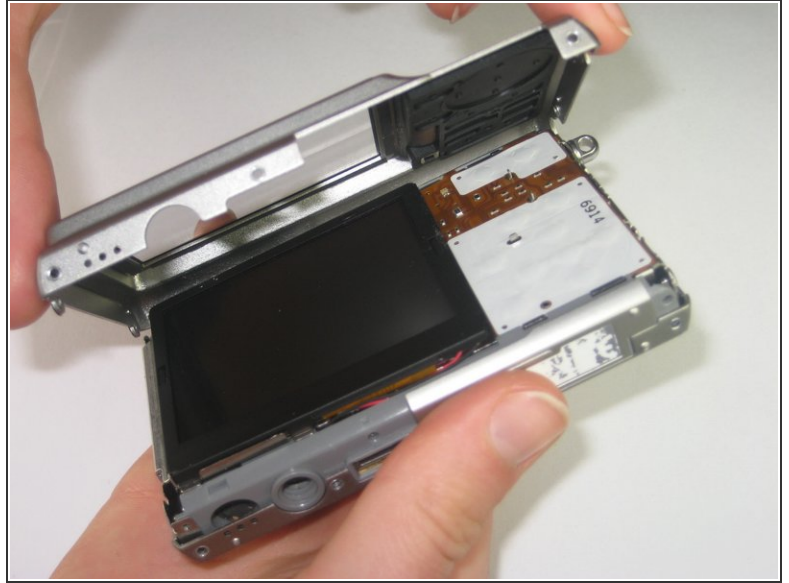
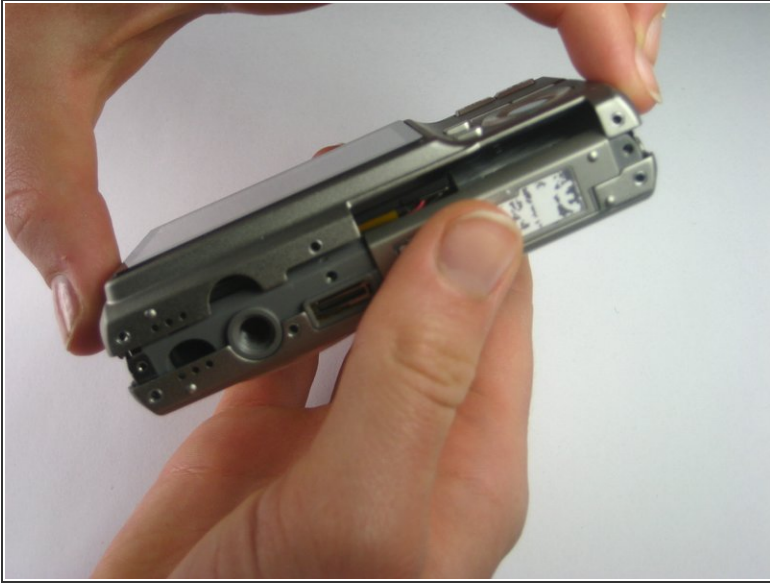
- Remove the six Phillips screws (3.69 mm) from the bottom of the camera casing.

Step 4



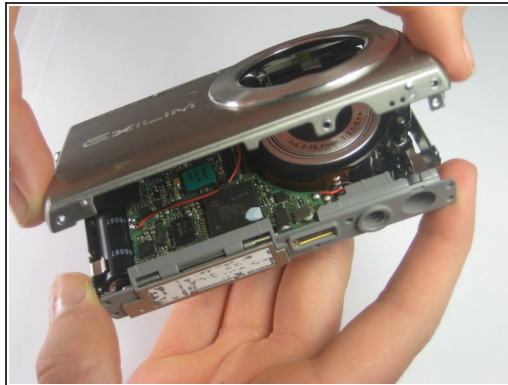
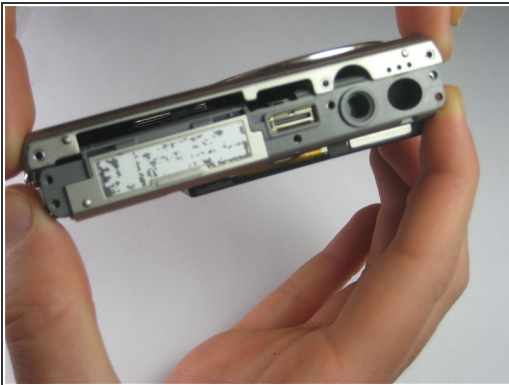
- Remove the two Phillips screws (2.79 mm) on the left side of the camera where the metal panel used to be.
- Repeat for the two Phillips screws (2.79 mm) right side of the camera.

Step 5



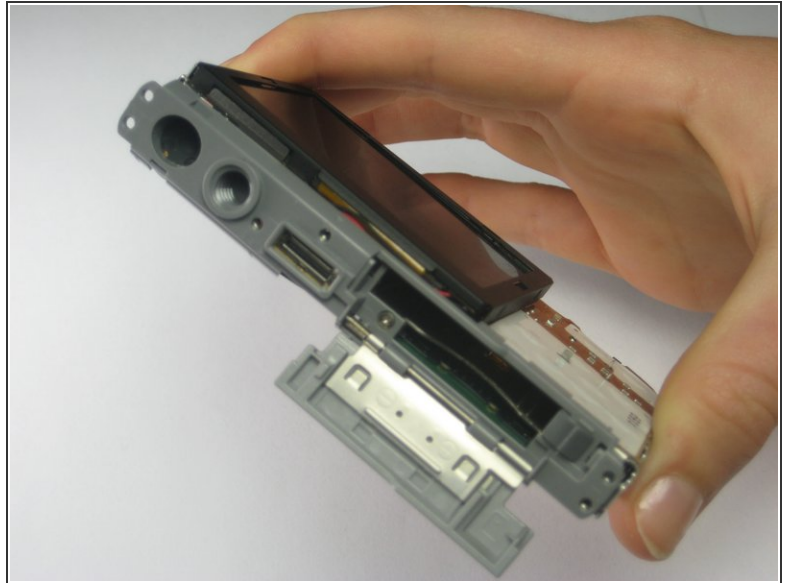
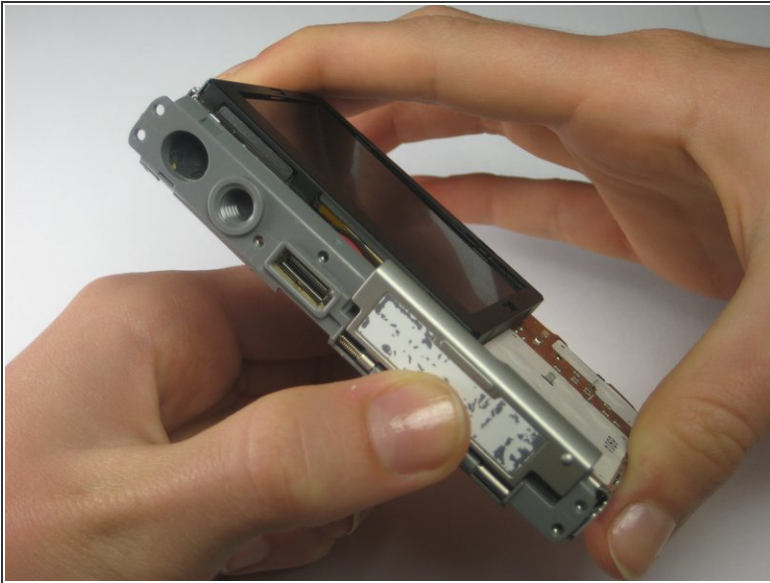
- With the LCD screen facing up towards you, start at the bottom of the camera and gently pull off the back of the casing.

Step 6



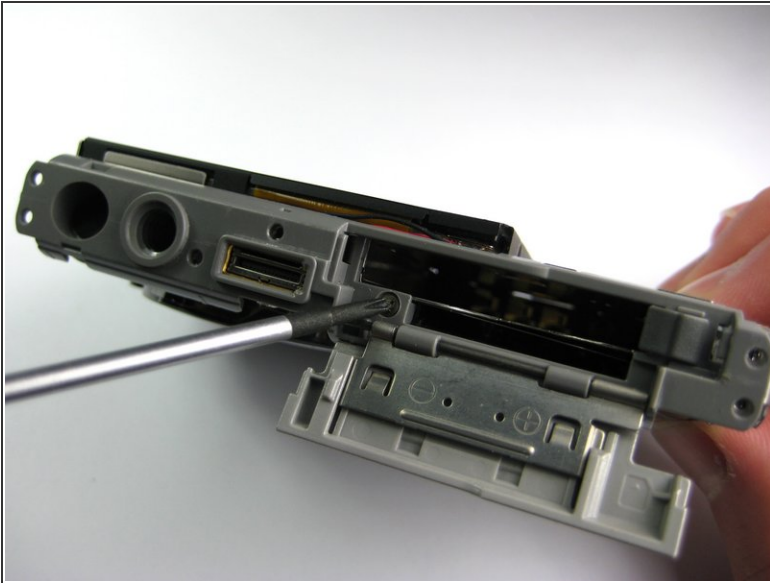
- With the front side (with the lens) facing up towards you, start at the bottom of the camera and gently pull off the front of the casing.
- ⓘ The nob that previously held the camera strap will no longer be attached to the camera once you remove the camera casing. When putting the camera back together, remember to put the nob back into position before replacing the casing.

Step 7



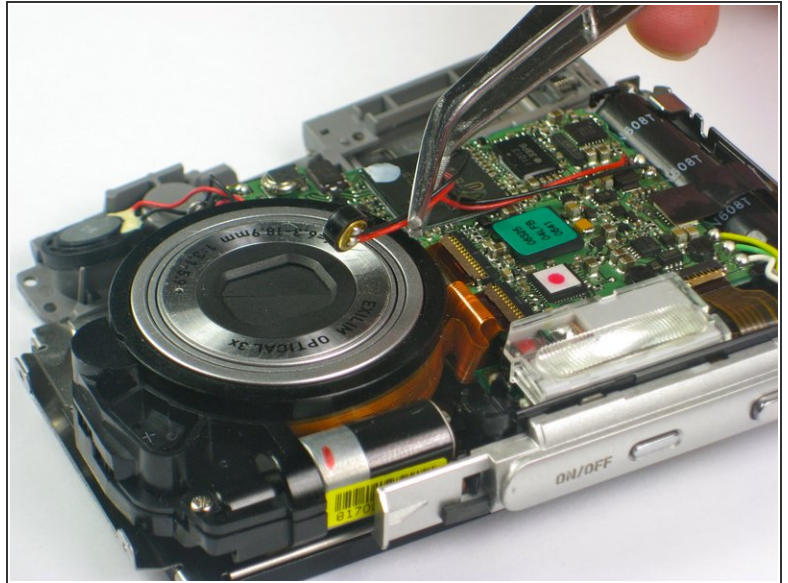
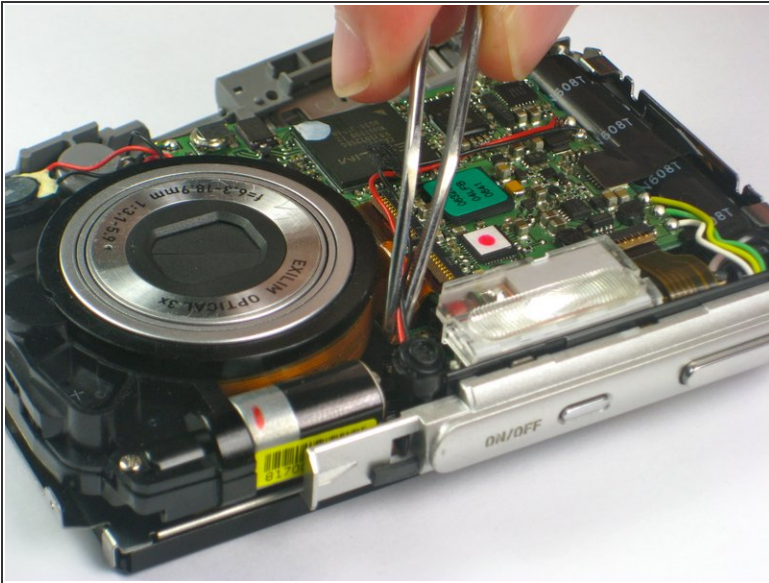
- Slide the labeled piece toward the LCD screen and release.
- The tab will spring open.

Step 8



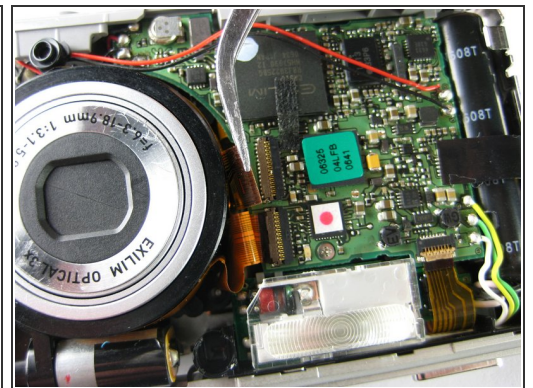
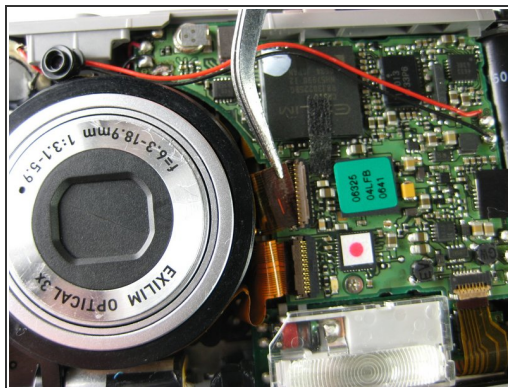
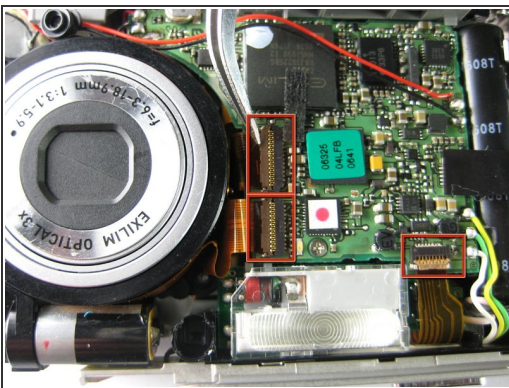
- Look at the bottom of the camera. Take out the Phillips screw (1.77 mm) holding on the bottom plastic piece.
- The bottom plastic piece is held on to the main frame of the camera only by two thin wires.

Step 9 — LCD Screen



- ① Orient the camera with the lens facing up and the flash towards you for the clearest visibility.
- Using a pair of tweezers, gently move the red and black wires away from the lens.

Step 10



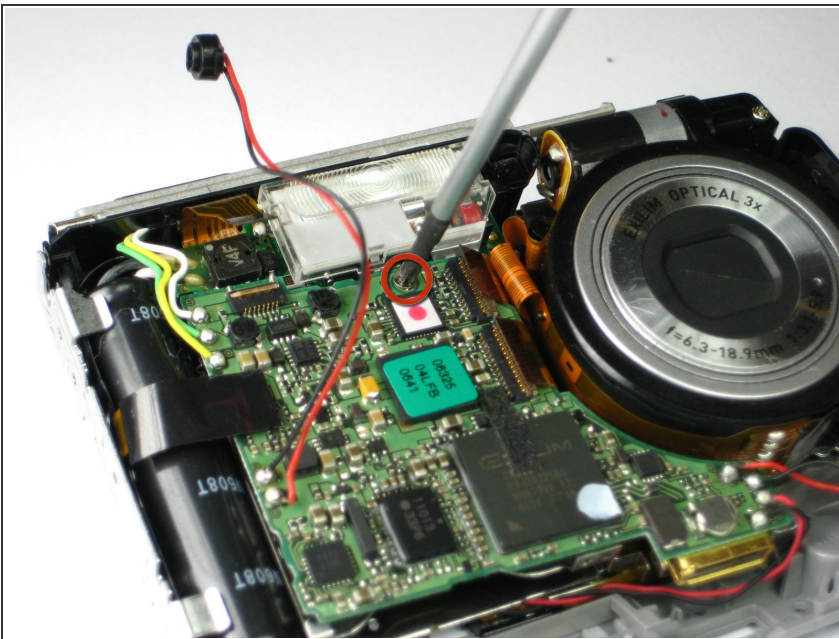
- Using tweezers or your finger nails, pull up the brown flaps where the three orange film strips meet the circuit board.
- Use the tweezers to pull all three orange film strips out of each port. The strips should come out easily.

Step 11



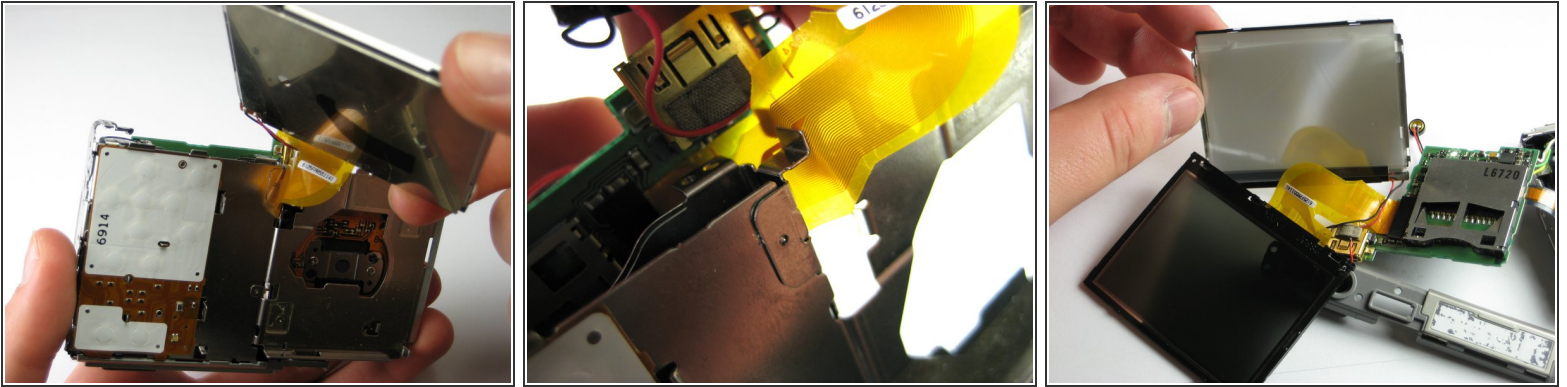
- Flip the camera over to the side with the LCD screen.
- Gently remove the plastic cover that borders the LCD screen starting with the top left corner, then the bottom left corner, and finally the bottom and top right corners.
- ⓘ The LCD screen is now loose from the camera; it should only be connected by a gold strip that attaches to the circuit board.

Step 12



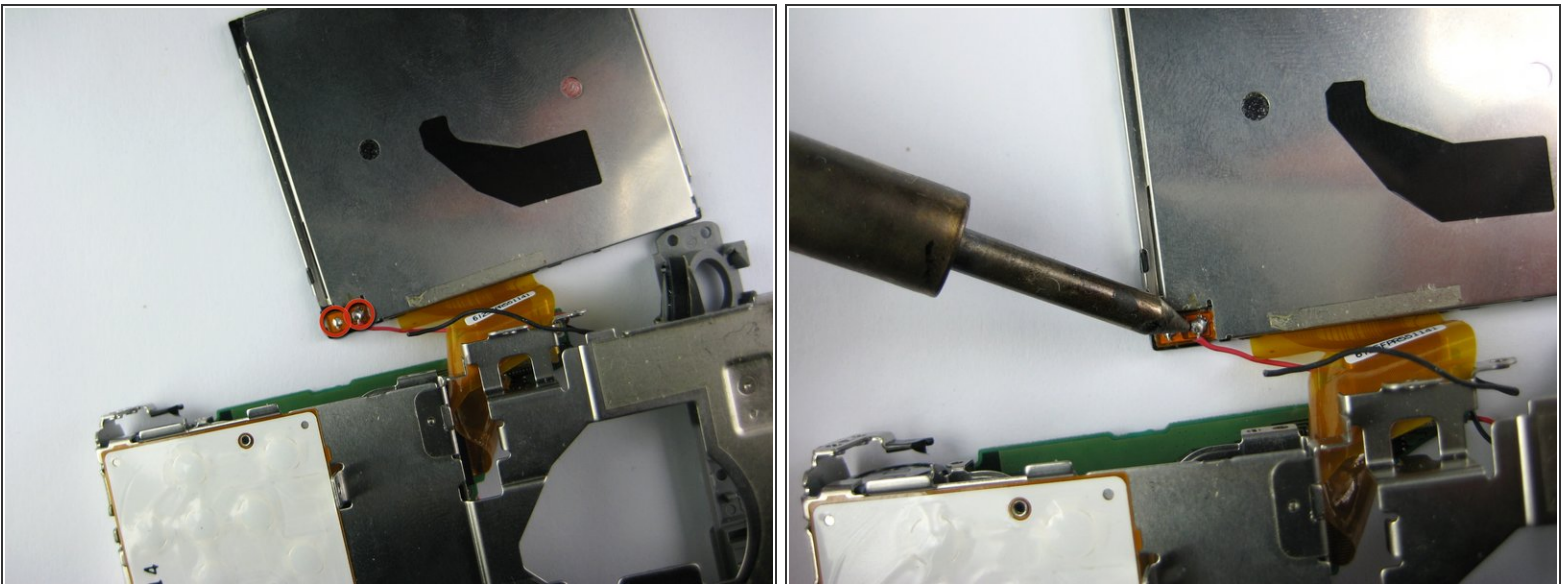
- Turn the camera back to the front side, with the lens facing up and the LCD facing down.
- Remove the Phillips screw (3.30 mm) located below the flash on the circuit board.

Step 13



- i** At this point, the LCD screen and the circuit board are only attached to the camera by a thin gold strip on the far left of the circuit board.
- Slide the gold strip that connects the LCD screen to the circuit board through the small gap at the bottom of the camera.

Step 14



- Using a soldering station and solder wick or other solder removing instrument, remove the solder holding the two wires of the LCD screen to the circuit board.
- You have now completely removed your LCD screen. It can now be replaced or cleaned.

To reassemble your device, follow these instructions in reverse order.