



Casio Exilim EX-Z70 Memory Card Replacement

How to instal the memory card into your Casio Exilim EX-270 camera, and switch your memory card from the locked to the unlocked position.

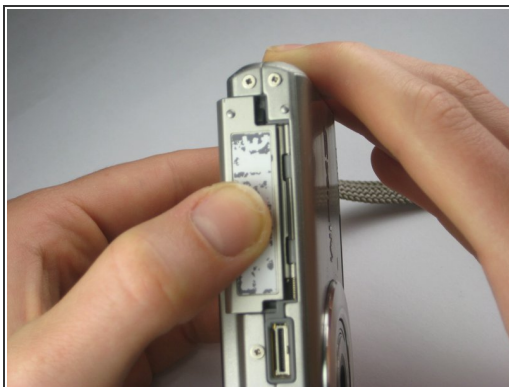
Written By: Paul Fallon



INTRODUCTION

If your camera displays a message that your memory is "locked," this guide will show you how to correct that. You will first be shown where the memory card is located and how to remove it. If you already know how to do so, you may skip down to step 3 for unlocking your memory card.

Step 1 — Memory Card



- Orient the camera with the lens facing to the right and the bottom of the camera toward you.
- Grasping the camera tightly, press downward firmly on the piece with the label and slide it towards the LCD screen (to the left).
- The flap will then swing upward.

Step 2



- Push down on the memory card (located behind the battery) and then release pressure completely.
- ⓘ The memory card will automatically rise part way out of its compartment.
- Grasp the memory card on each side and simply slide it out of its compartment to remove it.

Step 3



- If your memory card is locked, there is a metal slider on the left side that can be moved up to unlock the memory card.

To reassemble your device, follow these instructions in reverse order.