



Casio Exilim EX-Z80 Back and Front Cover Replacement

This guide will show you how to properly remove the front and back cover to the Casio Exilim EX-Z80 camera.

Written By: Caroline Villaseñor



INTRODUCTION

This guide will allow you to properly replace the front and back panel of the Casio Exilim EX-Z80 camera. This will also allow you to access the inner parts of the camera in the case that the lens or motherboard need to be replaced.



TOOLS:

- [Phillips #000 Screwdriver](#) (1)
 - [iFixit Opening Tools](#) (1)
 - [Metal Spudger](#) (1)
-

Step 1 — Battery



- Locate the battery compartment at the bottom of the camera.
- With your thumb, gently press down on the compartment door and slide to the left to open.

Step 2



- With your index finger, gently pull back gray release lever for the battery to pop out.
- Gently pull the battery out of the slot.

Step 3 — Back and Front Cover



- Locate the screws on the bottom of the camera.
- With the #000 screw driver, remove the 4 3mm black screws.
- With your thumb or index finger, open the battery compartment and with the #000 screw driver remove the 2mm silver screw that is now exposed.

Step 4



- Locate the USB port of the camera.
- Open the usb port tab to expose a 2mm silver screw.
- With the #000 screw driver, remove the 2mm silver screw.

Step 5



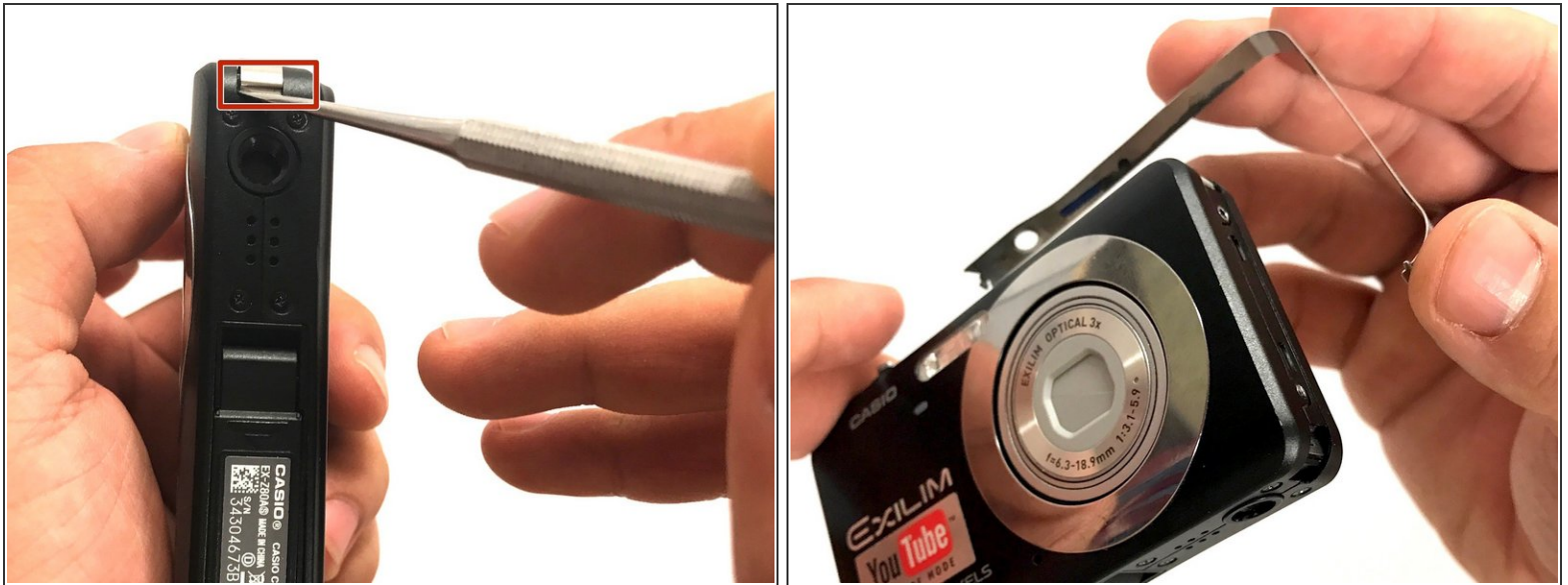
- Locate the 2 exposed screws on the other side of the camera.
- With the #000 screwdriver remove the two 2mm silver screws.

Step 6



- Carefully remove the silver strip from left side. Open the battery cover and remove the metal strip with fingers by sliding it to the left.

Step 7



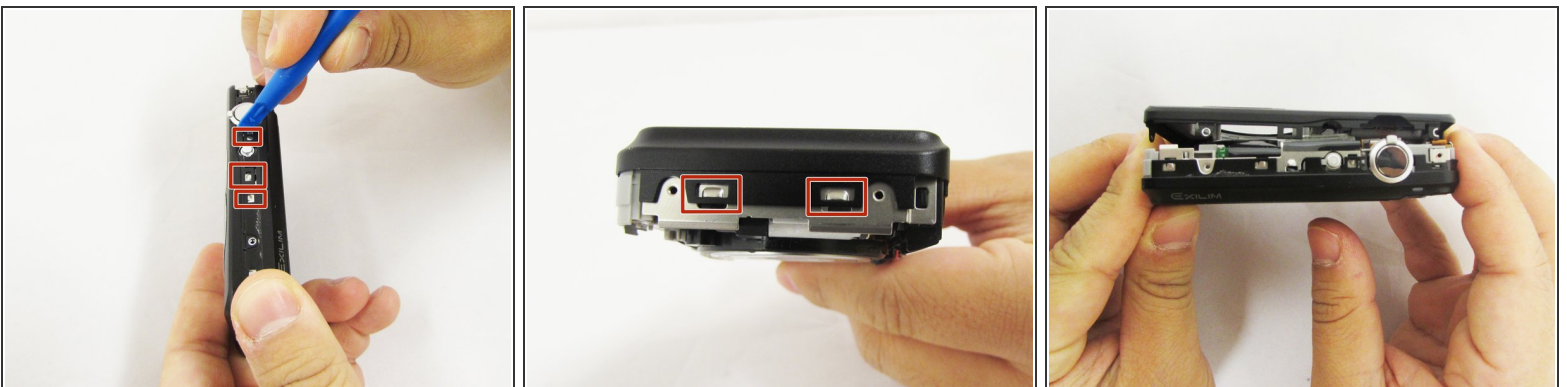
- With the metal spudger, pry out the edge of the silver strip at the bottom right side of the camera.
- Carefully remove the remaining part of the metal strip.

Step 8



- With the #000 screwdriver, remove the 2mm silver screw from the top corner of the camera near the shutter button.
- With the #000 screwdriver, remove the second 2mm silver screw.
- Do the same thing on the left side using #000 for the three 2mm screws.

Step 9



- Using a small opening tool carefully release all lock tabs at the top and on the side of the camera from their locked position.
- Using your hands, carefully separate the front and back panel from the camera.

To reassemble your device, follow these instructions in reverse order.