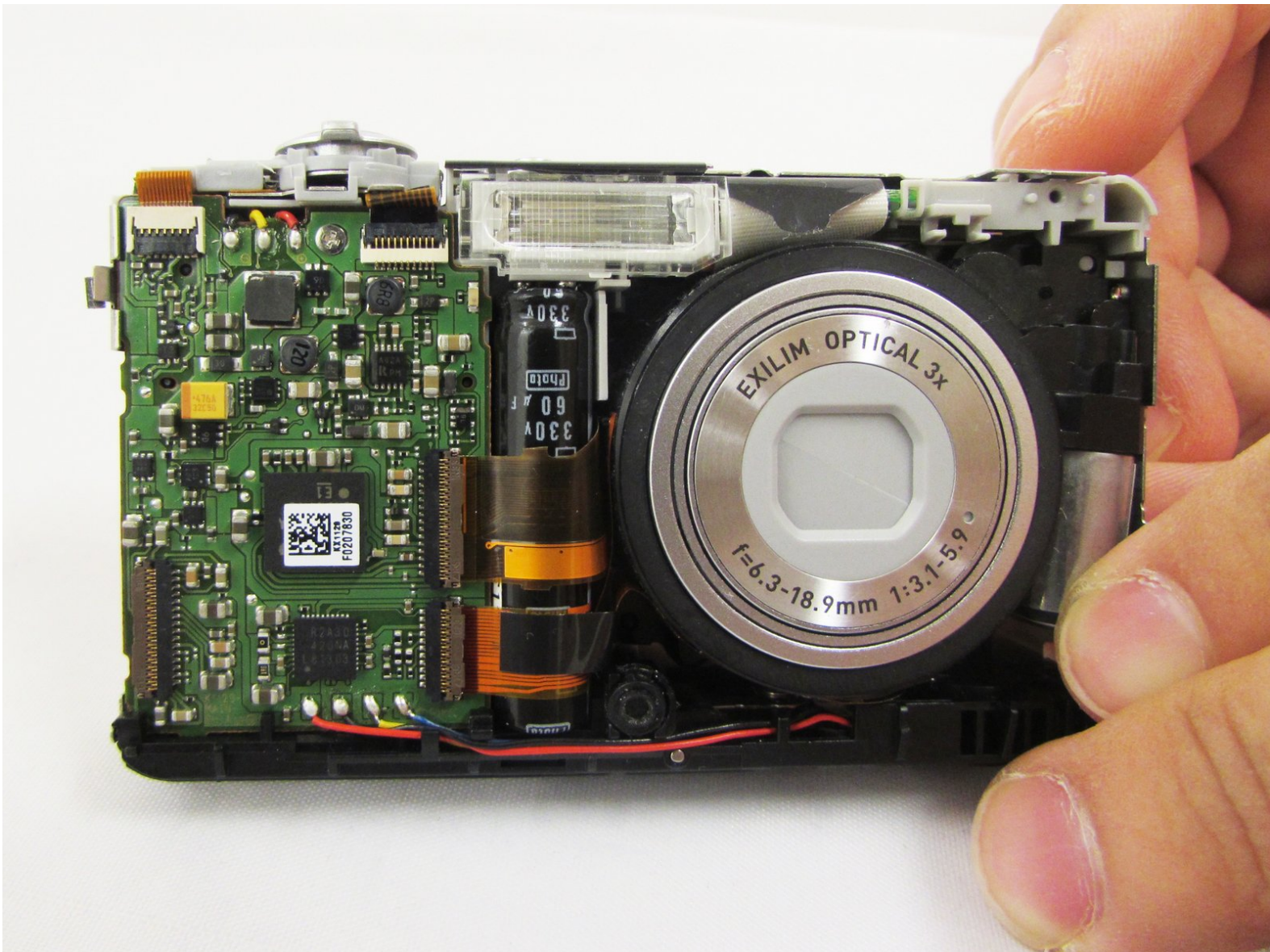




Casio Exilim EX-Z80 Lens Replacement

This guide will show the steps to replace the camera lens for the Casio Exilim EX-Z80.

Written By: Caroline Villaseñor



INTRODUCTION

This guide will show you how to properly remove and replace the Casio Exilim EX-Z80 camera lens in the case that the lens has been broken or scratched. It will require the use of the Casio Exilim EX-Z80 Back and Front Cover Replacement Guide.



TOOLS:

- [Tweezers - Pro/ESD/Angled](#) (1)
 - [Spudger](#) (1)
 - [Phillips #000 Screwdriver](#) (1)
 - [iFixit Opening Tools](#) (1)
 - [Heavy-Duty Spudger](#) (1)
-

Step 1 — Back and Front Cover



- Locate the screws on the bottom of the camera.
- With the #000 screw driver, remove the 4 3mm black screws.
- With your thumb or index finger, open the battery compartment and with the #000 screw driver remove the 2mm silver screw that is now exposed.

Step 2



- Locate the USB port of the camera.
- Open the usb port tab to expose a 2mm silver screw.
- With the #000 screw driver, remove the 2mm silver screw.

Step 3



- Locate the 2 exposed screws on the other side of the camera.
- With the #000 screwdriver remove the two 2mm silver screws.

Step 4



- Carefully remove the silver strip from left side. Open the battery cover and remove the metal strip with fingers by sliding it to the left.

Step 5



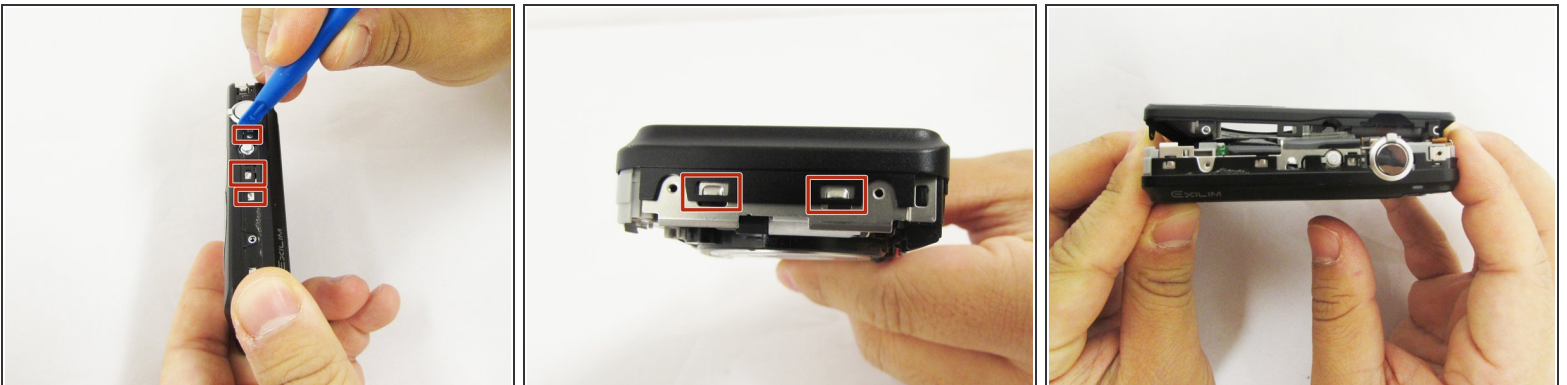
- With the metal spudger, pry out the edge of the silver strip at the bottom right side of the camera.
- Carefully remove the remaining part of the metal strip.

Step 6



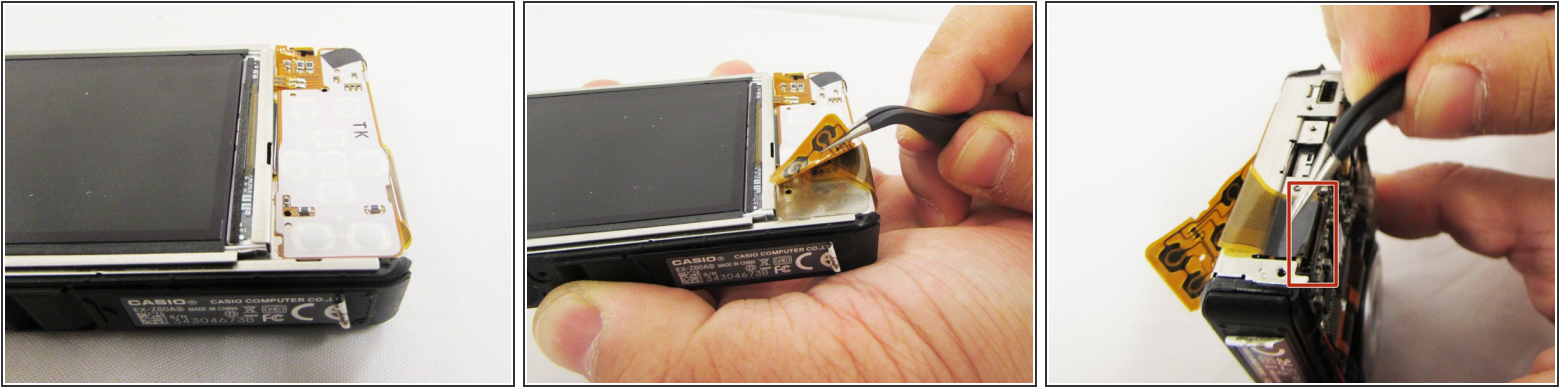
- With the #000 screwdriver, remove the 2mm silver screw from the top corner of the camera near the shutter button.
- With the #000 screwdriver, remove the second 2mm silver screw.
- Do the same thing on the left side using #000 for the three 2mm screws.

Step 7



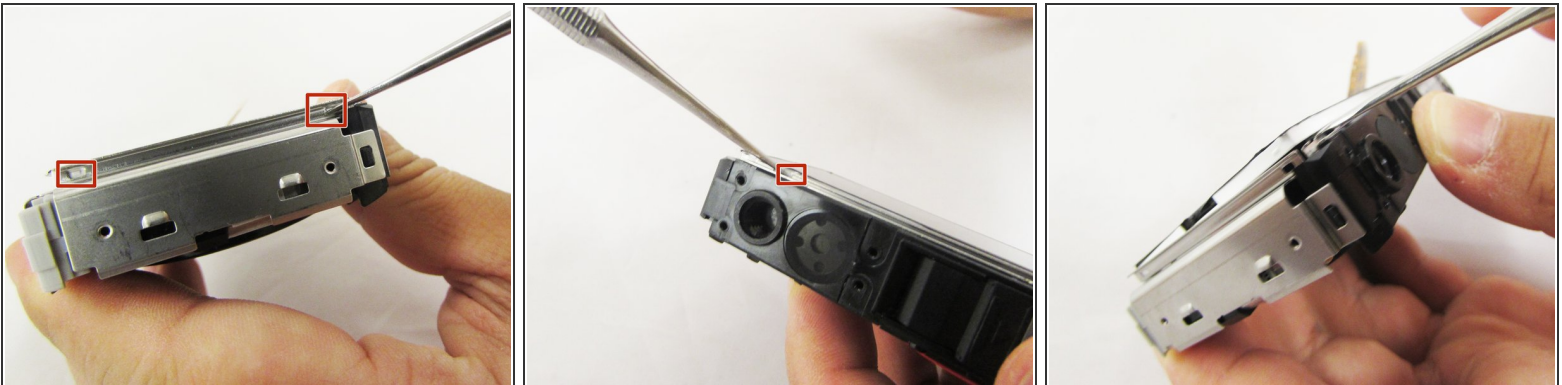
- Using a small opening tool carefully release all lock tabs at the top and on the side of the camera from their locked position.
- Using your hands, carefully separate the front and back panel from the camera.

Step 8 — LCD Screen



- Carefully flip the wide button cable up from the display cable.
- Use the tip of a spudger to lift the brown retaining flap on the display cable ZIF connector.
- Carefully pull the display cable from its connector.

Step 9



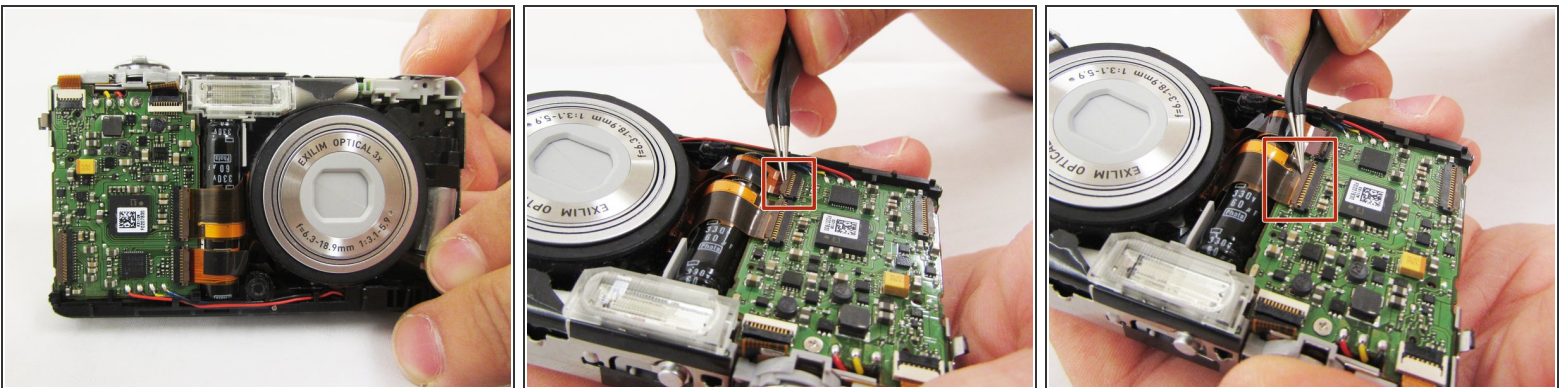
- Pry up the LCD screen using a metal spudger. There are several little square holes for locking the LCD screen. Pry them up until the raised little tabs are out of the metal holes.
- Do the same for all little holes around the four edges of the camera.
- With all little tabs raised are pried out. The LCD screen should be pried up using metal spudger very easily. Insert the spudger into the gap of the metal case and pry up the LCD screen.

Step 10



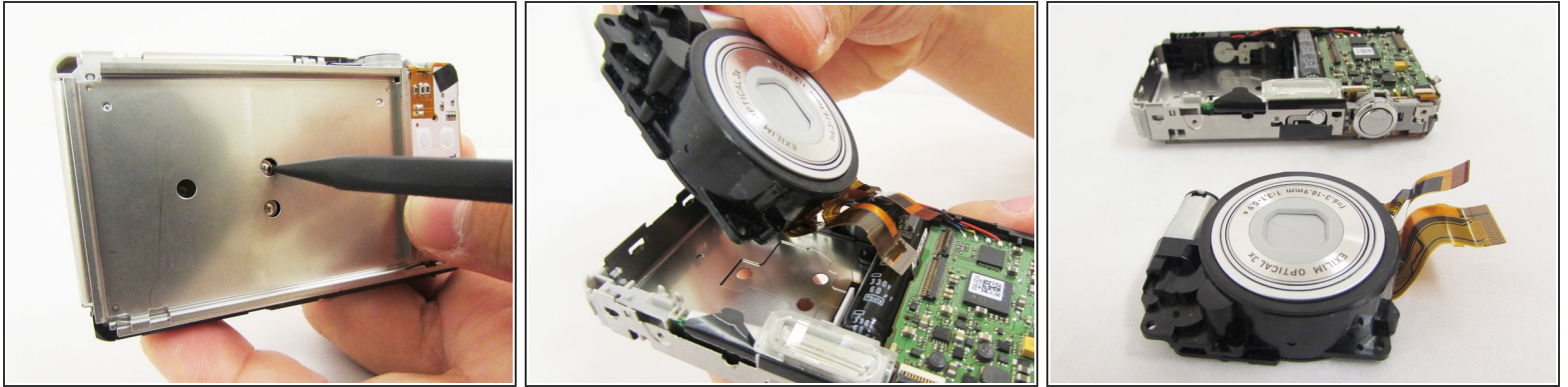
- When the LCD screen is pried up, hold it with your hand and do not allow it fall back into the metal case.
 - Hold the LCD screen in one hand and hold back the button cable with the other.
- ⚠ Ensure that the button cable does not get caught on the display cable.
- Pull on the LCD screen until the yellow display cable is completely out of the metal case.

Step 11 — Lens



- Lift the retaining flaps on the two ZIF connectors that secure the the lens ribbon cables to the motherboard.
- Carefully pull the two ribbon cables from their sockets on the motherboard.

Step 12



- Turn the camera around and locate the holes on the metal panel.
- With a heavy duty spudger, gently poke through the holes, releasing the lens from the main portion of the camera.
- With your index finger and thumb gently pull the full lens out.

To reassemble your device, follow these instructions in reverse order.