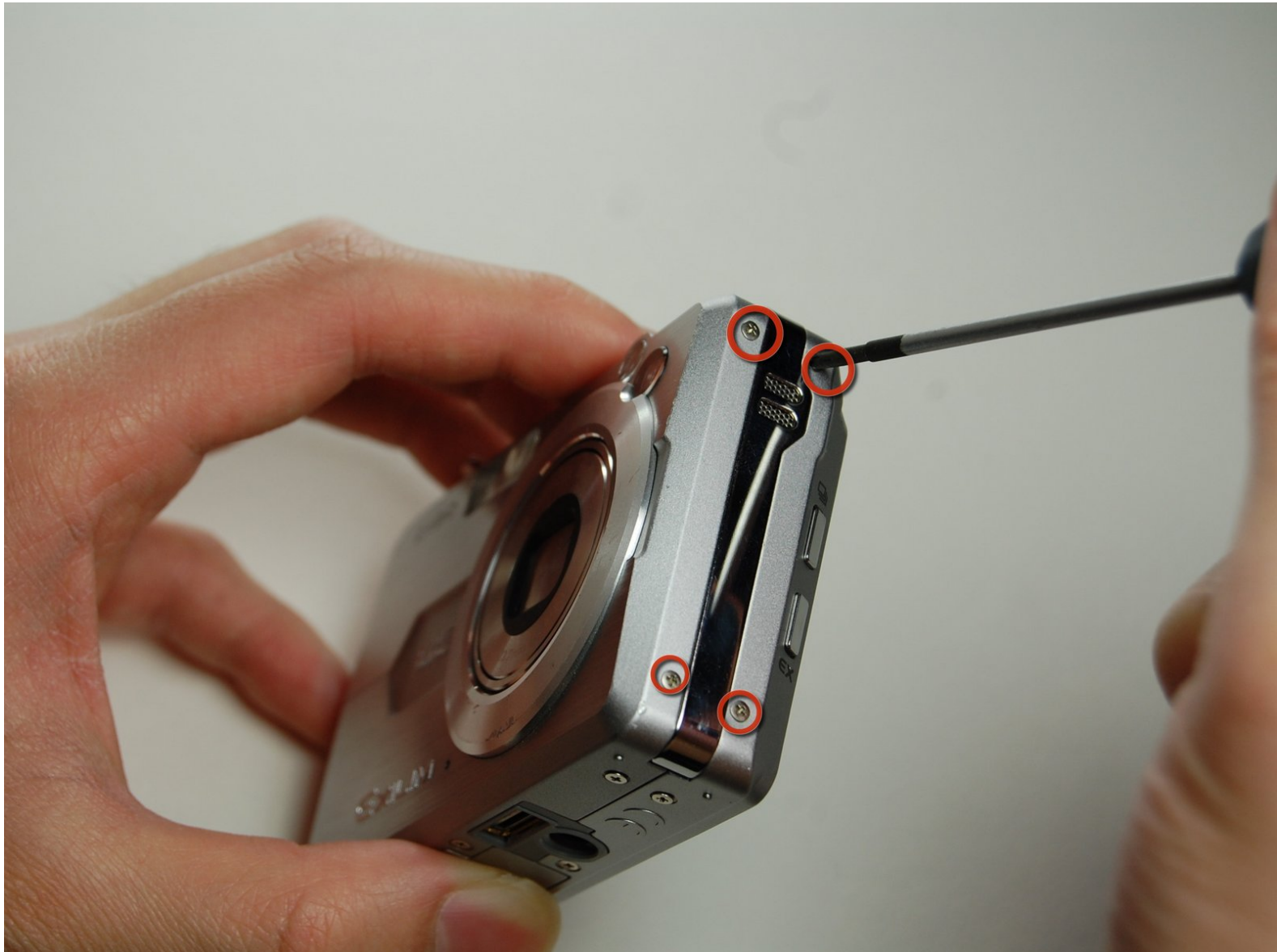




Casio Exilim EX-Z850 Flash Assembly Replacement

How to replace flash assembly

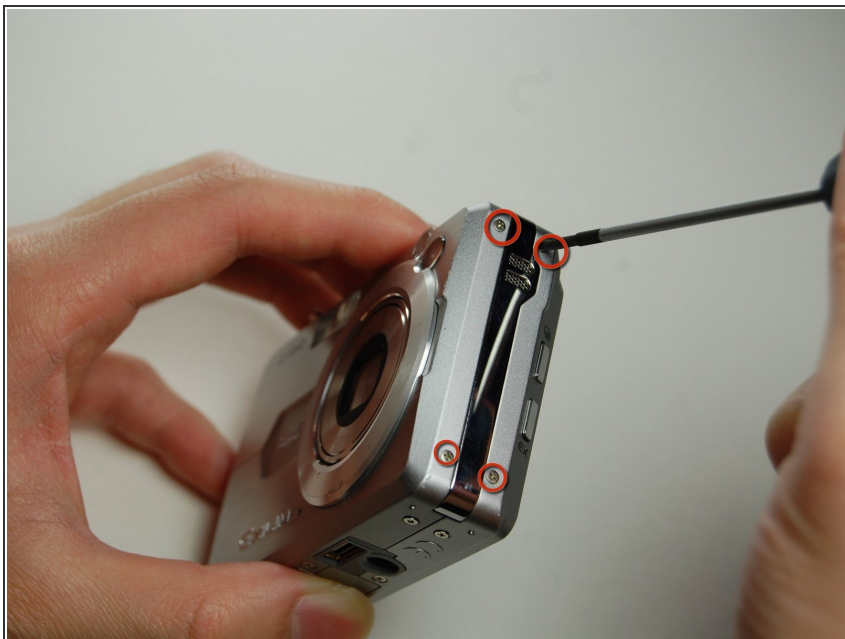
Written By: Christian



 **TOOLS:**

- [Phillips #00 Screwdriver](#) (1)
- [Tweezers](#) (1)

Step 1 — Flash Assembly



- Remove the four screws on the side of the speaker.

Step 2



- Remove the two back screws on the bottom of the camera.

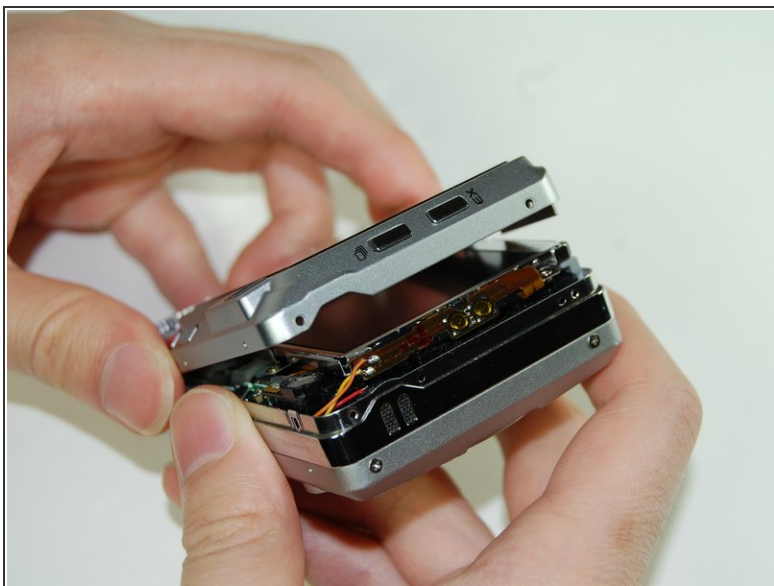
⚠ Note: Bottom screws are longer than the top ones, so label accordingly for easy reassembly.

Step 3



- Remove the four screws on the side opposite of the speaker.

Step 4



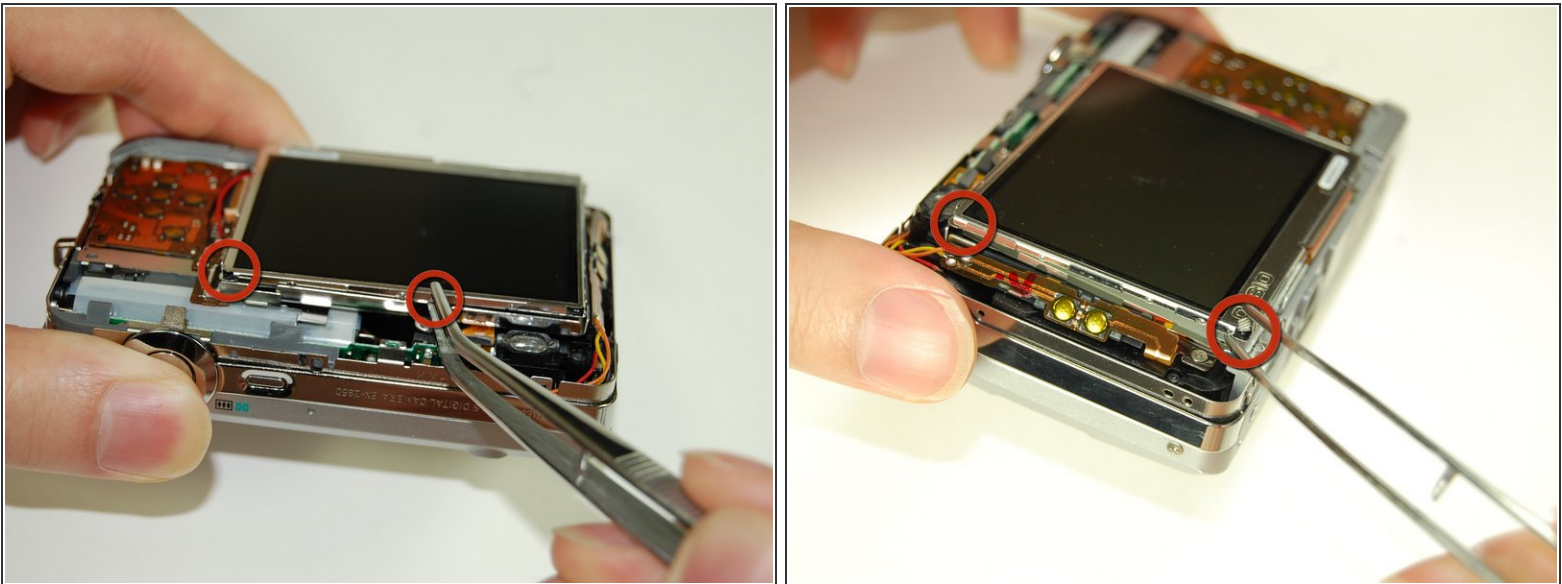
- Once all screws have been removed, gently pry open bottom casing.
- With tweezers, carefully remove ribbon from LCD screen.
- Set bottom casing aside.

Step 5




- Gently pry apart the top casing using tweezers.
- Set the top casing aside.

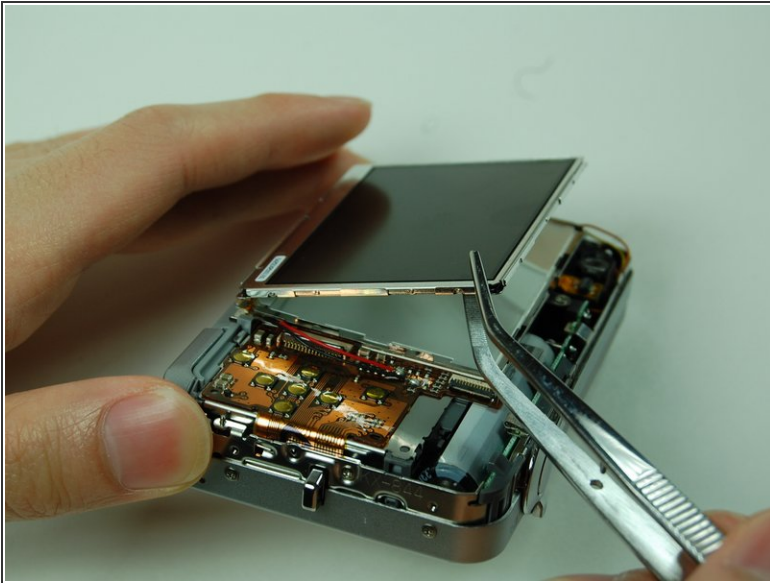
Step 6



- Use tweezers or prongs to pry the LCD screen off from the opening.

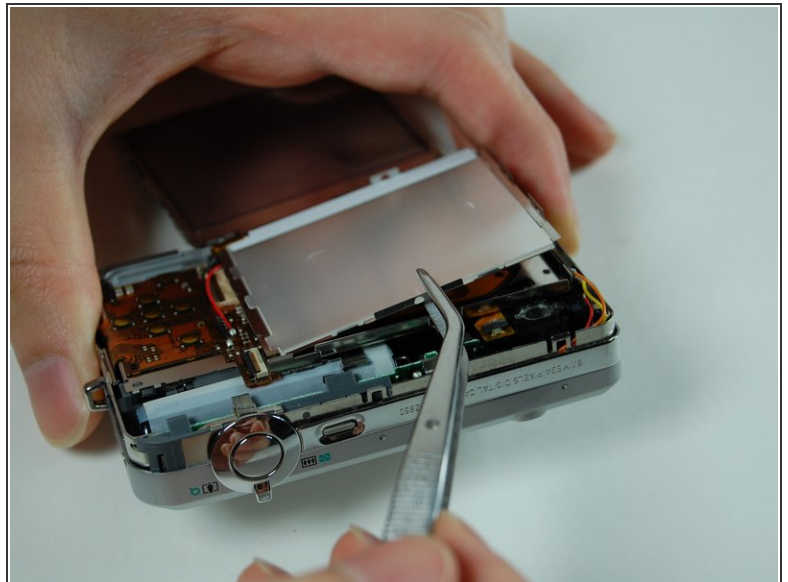
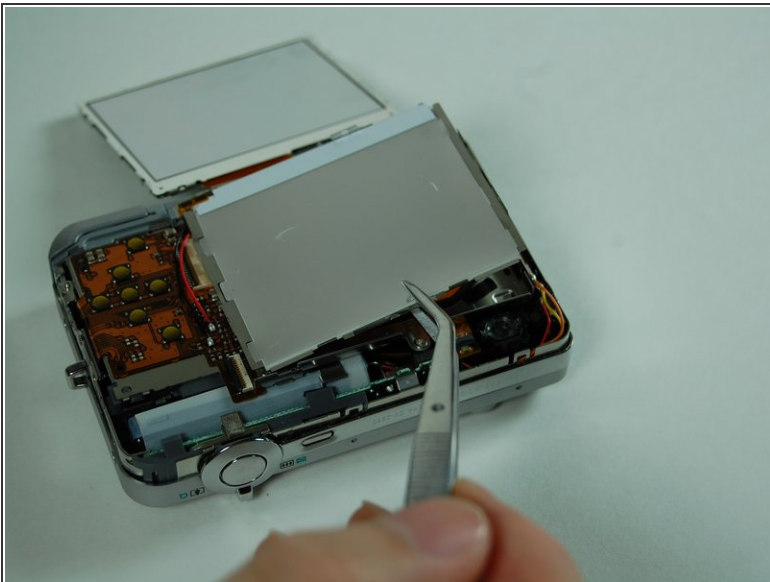
 **Note:** The bottom of the LCD screen is attached to the frame by a few pieces of black tape.

Step 7



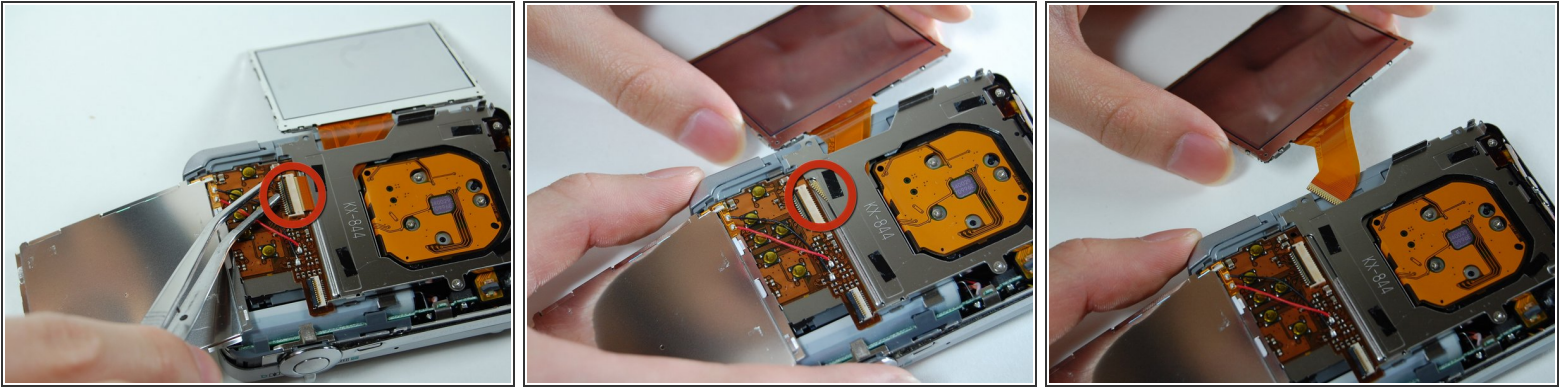
- Lift up the LCD screen, slowly move it to the other side.

Step 8



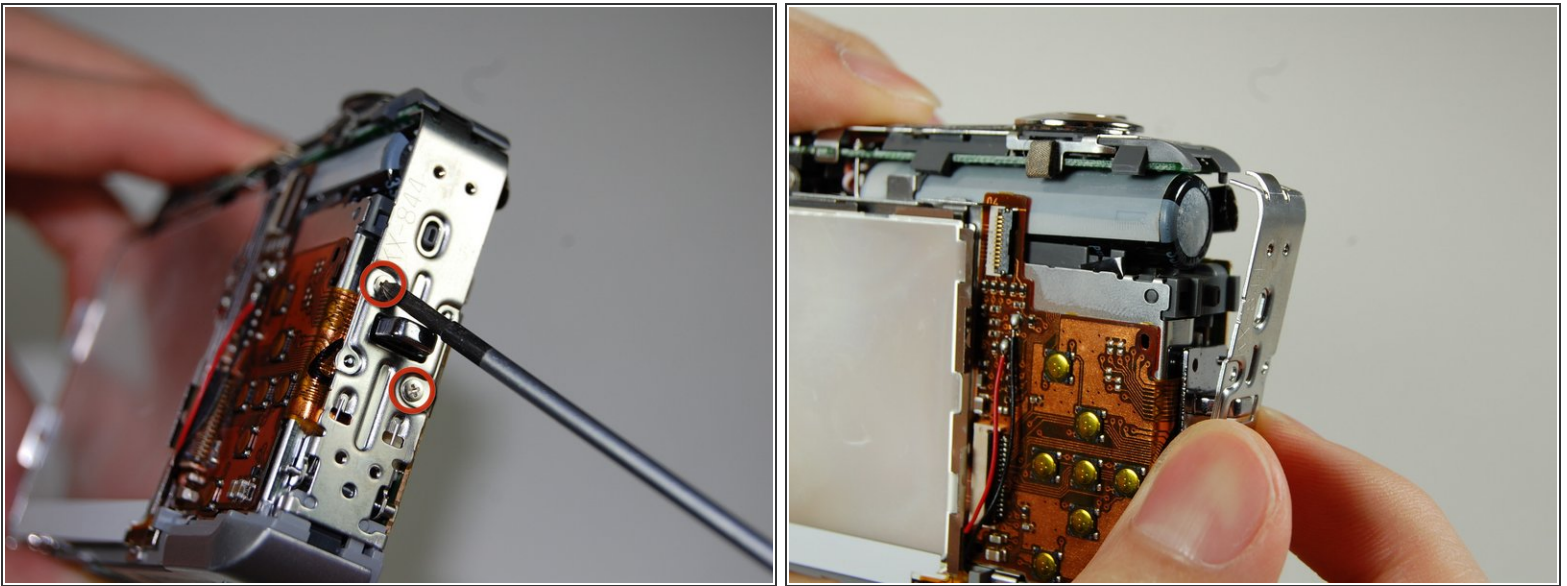
- Pry off the LCD casing.

Step 9



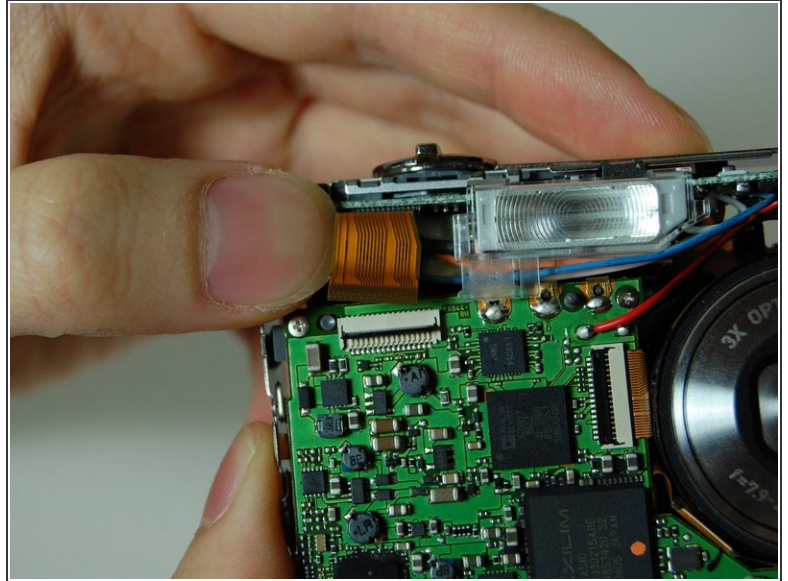
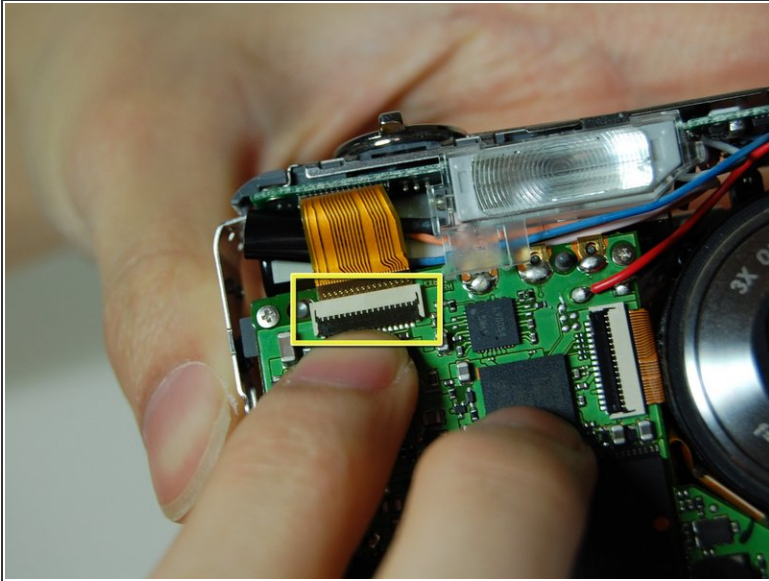
- Flip open the connector holding the ribbon.
- Pull out the LCD screen with the ribbon from the camera.

Step 10



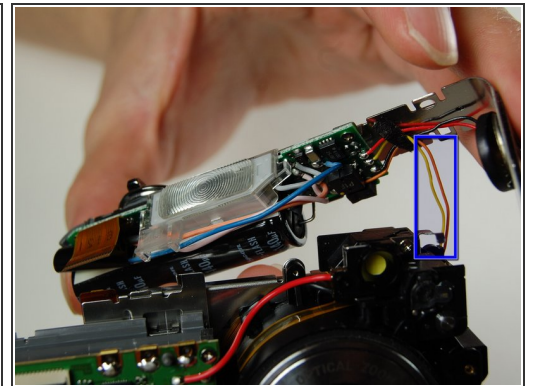
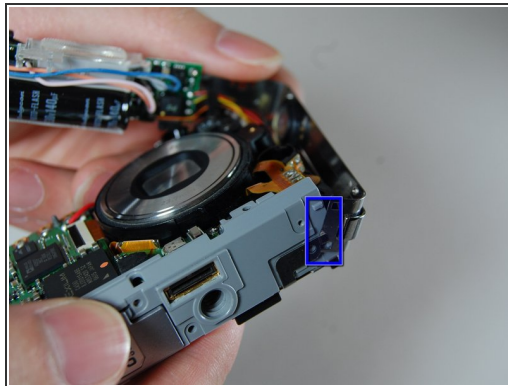
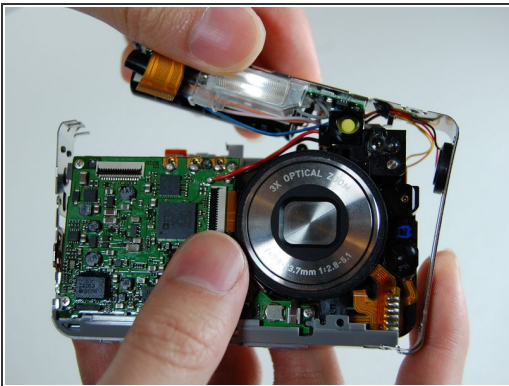
- Remove two screws on the side where the battery is located.
- Remove the lanyard loop after the screws come off.
- Slowly pull the side casing so it becomes dislocated from the top of the camera frame.

Step 11



- On the front of the camera near the flash flip the connector holding the ribbon.
- Remove the ribbon from the connector.

Step 12

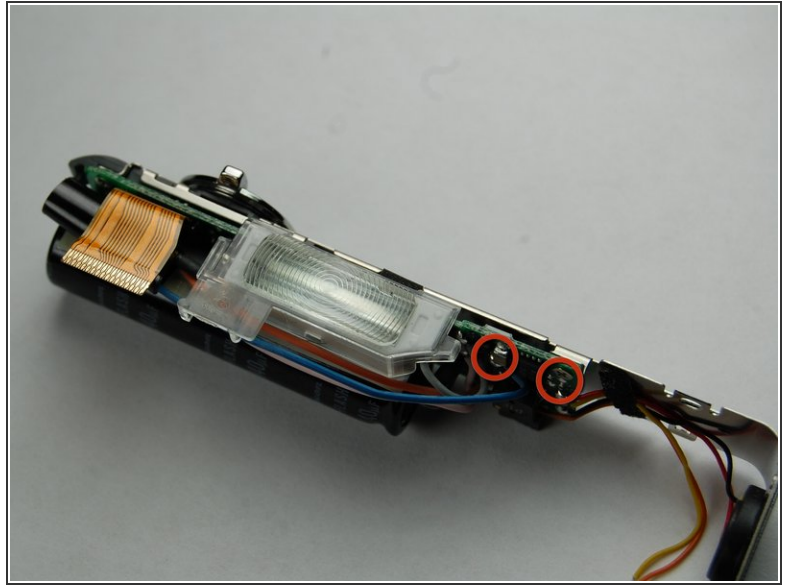
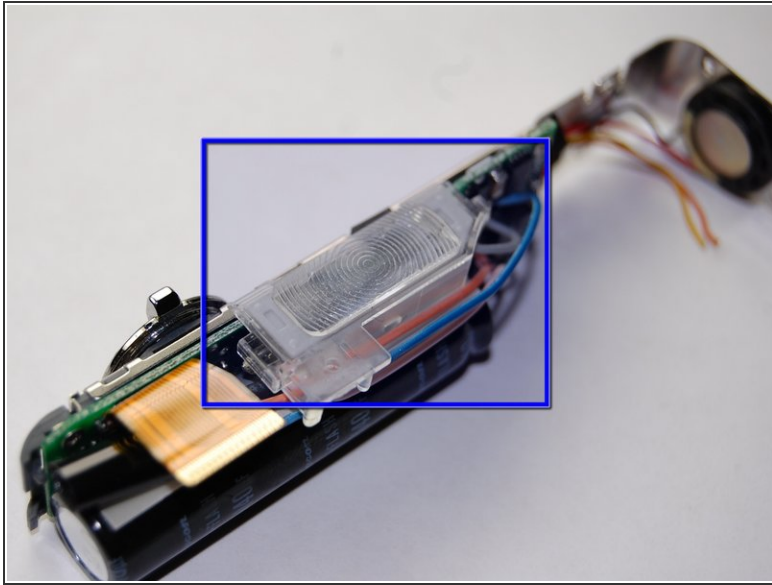


- Carefully remove the L shaped frame from the camera.
- At the bottom of the camera the L shaped frame is being held in by two plastic bumps and a metal tab.
- Pop the frame off the bumps and tabs.



Note: There is a yellow and orange wire soldered onto the camera. Be careful not to pull them off.

Step 13



- This is the flash assembly.
- It needs to be removed with soldering points circled.

To reassemble your device, follow these instructions in reverse order.