



# Casio Exilim EX-Z850 Motherboard Replacement

This repair guide will cover how to replace the motherboard.

Written By: Jennifer Roth





## TOOLS:

- [Phillips #00 Screwdriver](#) (1)
  - [Tweezers](#) (1)
-

## Step 1 — Motherboard



- Remove the four screws on the side with the speaker.

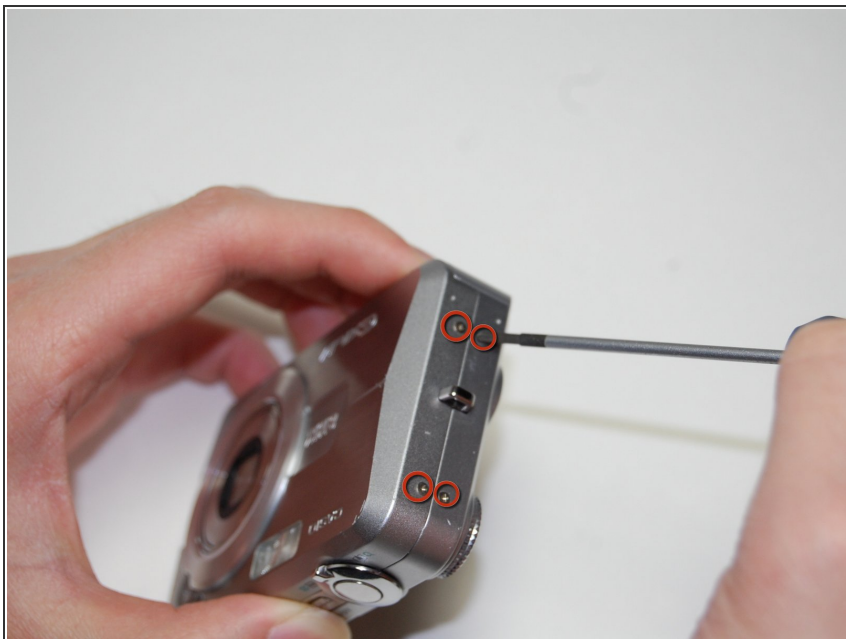
## Step 2



- Remove the four back screws on the bottom of the camera.

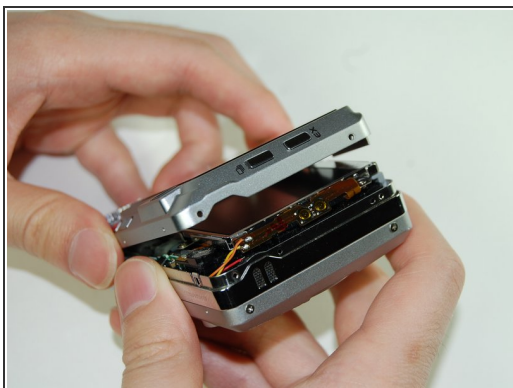
⚠ Note: Bottom screws are longer than the top ones, so label accordingly for easy reassembly.

### Step 3



- Remove the four screws on the side opposite of the speaker.

### Step 4



- Once all screws have been removed, gently pry open bottom casing.
- With tweezers, carefully remove ribbon from LCD screen.
- Set bottom casing aside.

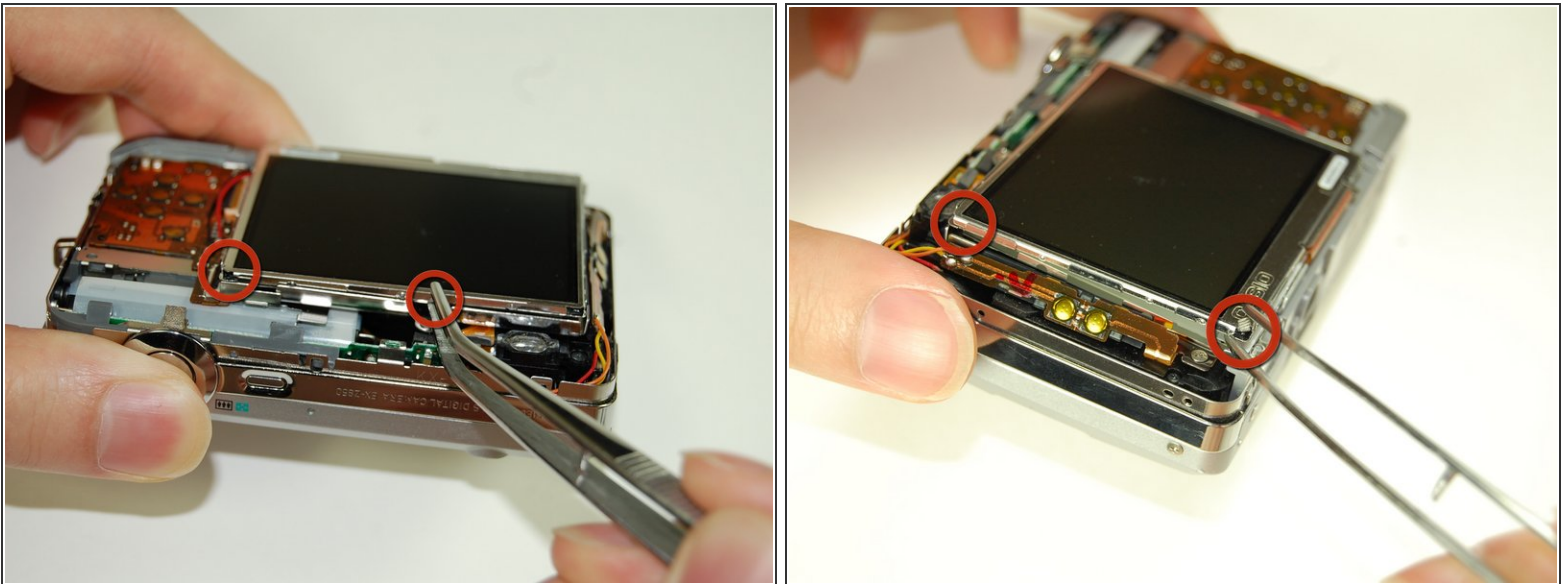
## Step 5



- Pry apart the top casing using tweezers.
- Set the top casing aside.

⚠ Note: Bottom left screw on board is orange and the longest.

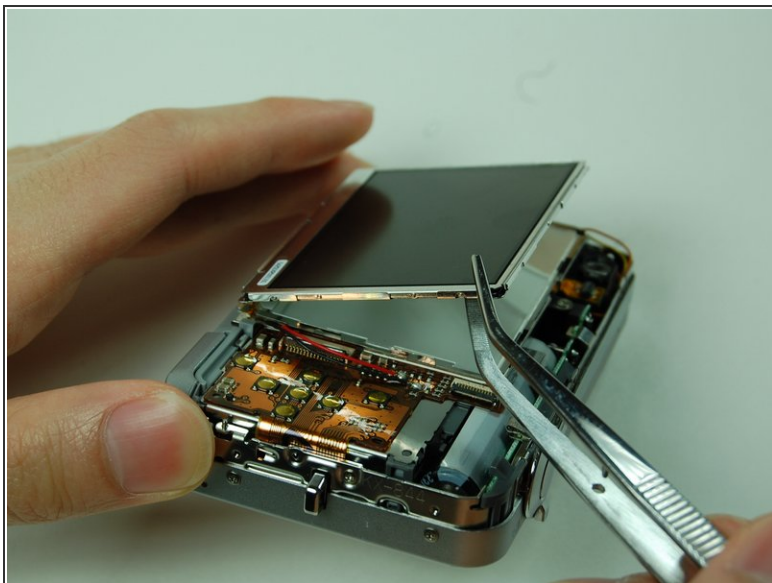
## Step 6



- Use tweezers or prongs to pry the LCD screen off from the opening.

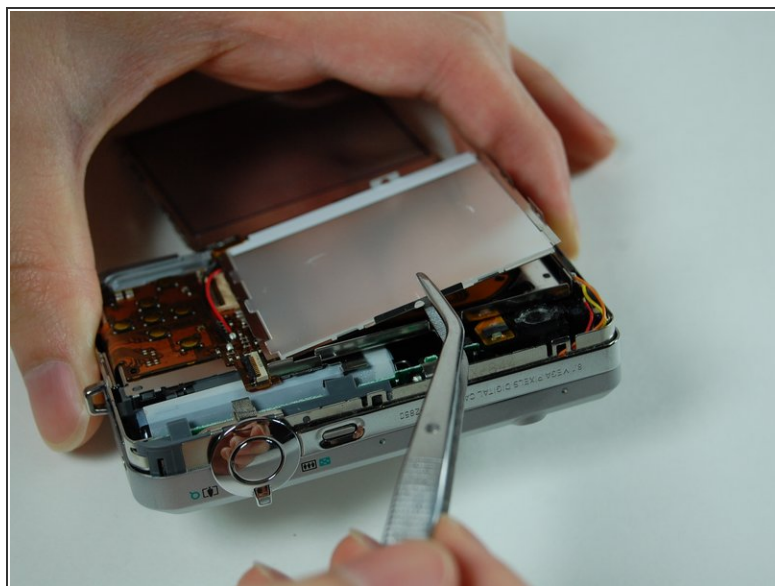
⚠ Note: The bottom of the LCD screen is attached to the frame by a few pieces of black tape.

## Step 7



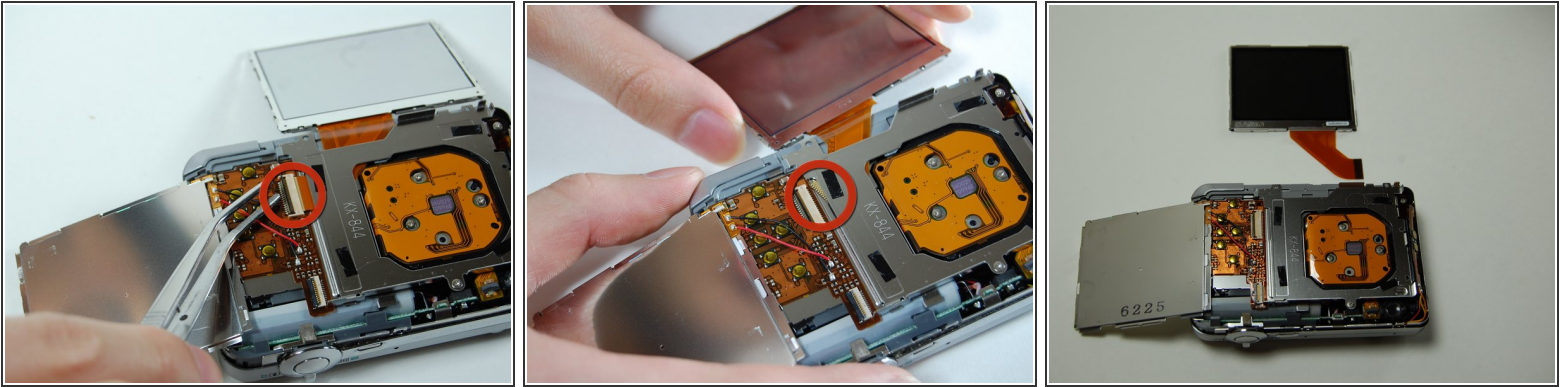
- Lift up the LCD screen, slowly move it to the other side.

## Step 8



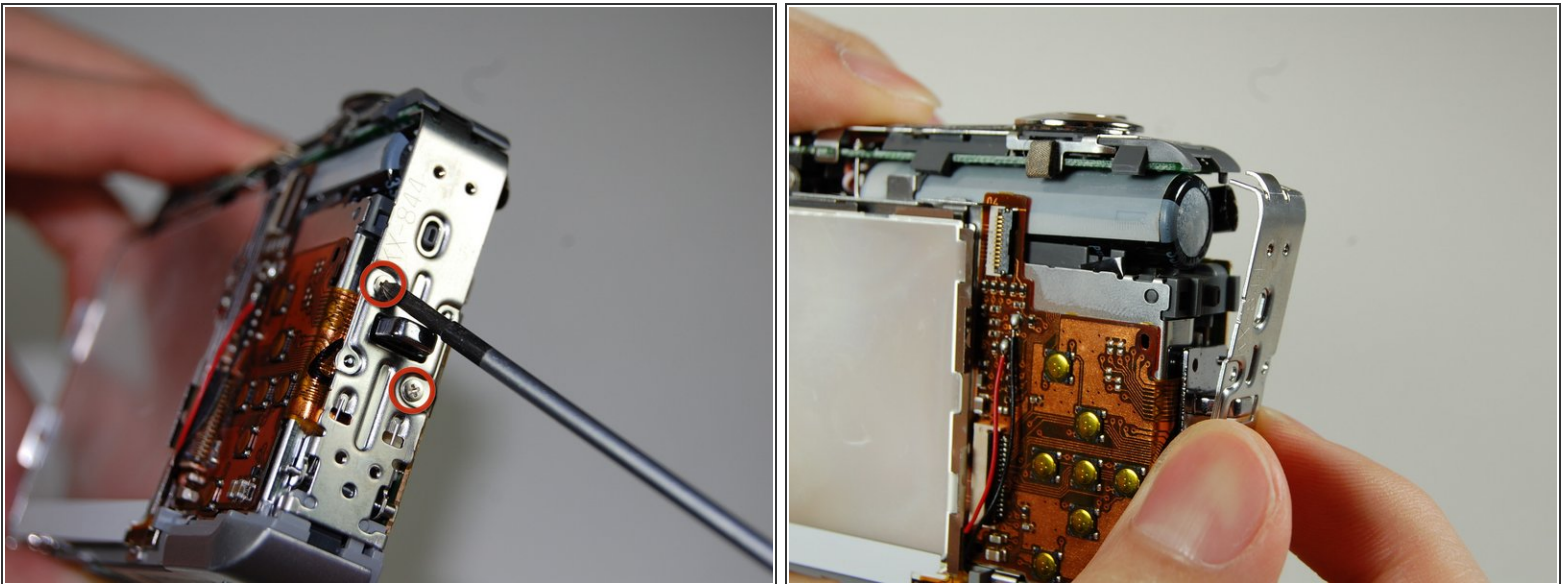
- Pry off the LCD casing.

## Step 9



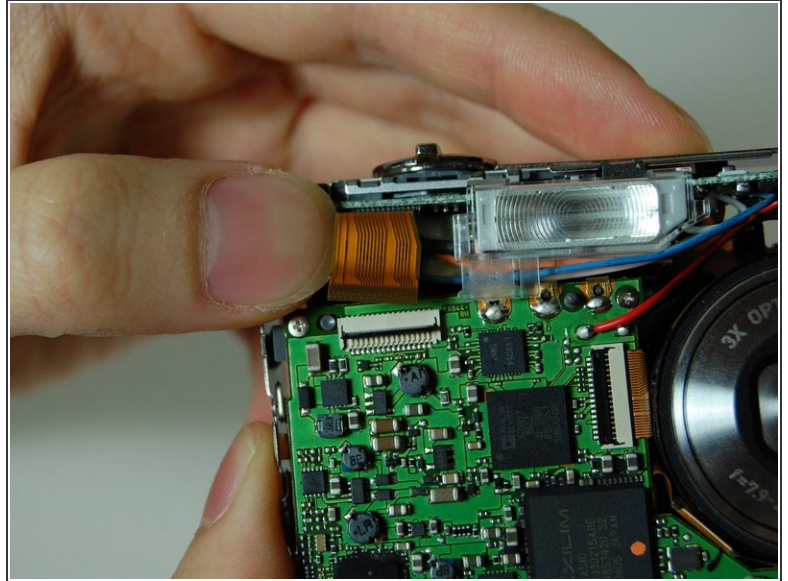
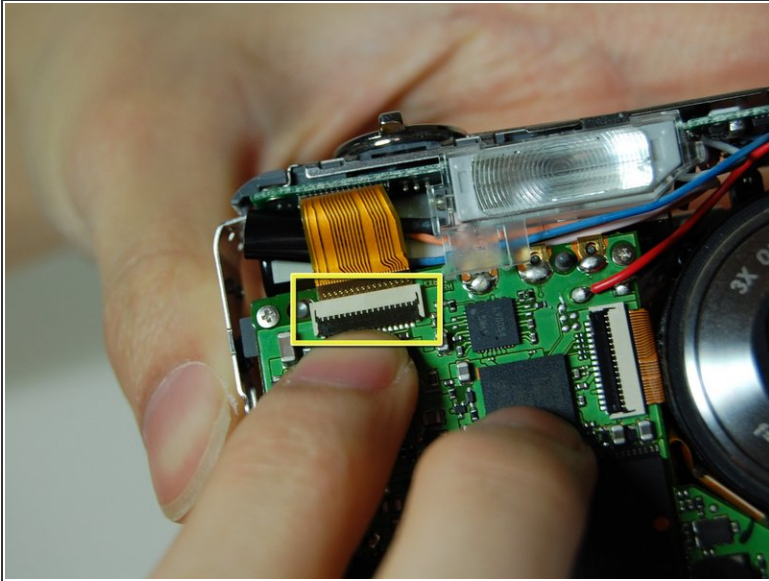
- Flip open the connector holding the ribbon.
- Pull out the LCD screen with the ribbon from the camera.

## Step 10



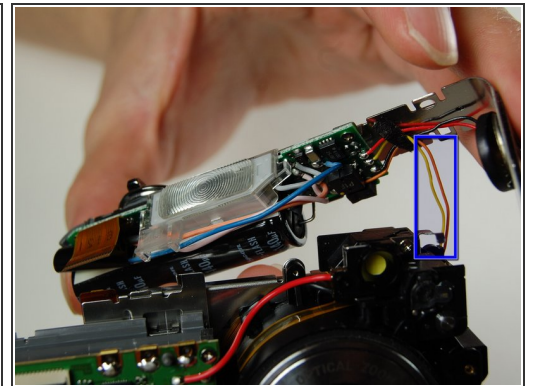
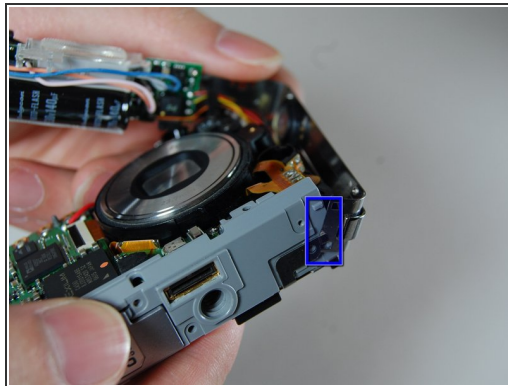
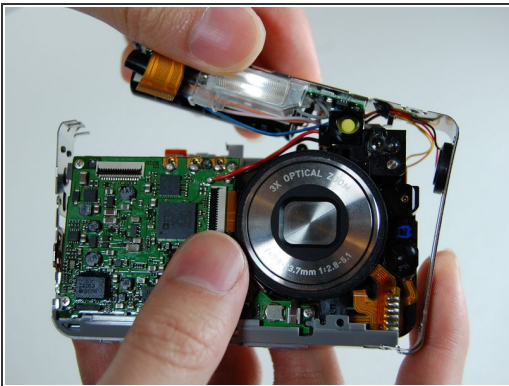
- Remove two screws on the side where the battery is located.
- Remove the lanyard loop after the screws come off.
- Slowly pull the side casing so it becomes dislocated from the top of the camera frame.

## Step 11



- On the front of the camera near the flash flip the connector holding the ribbon.
- Remove the ribbon from the connector.

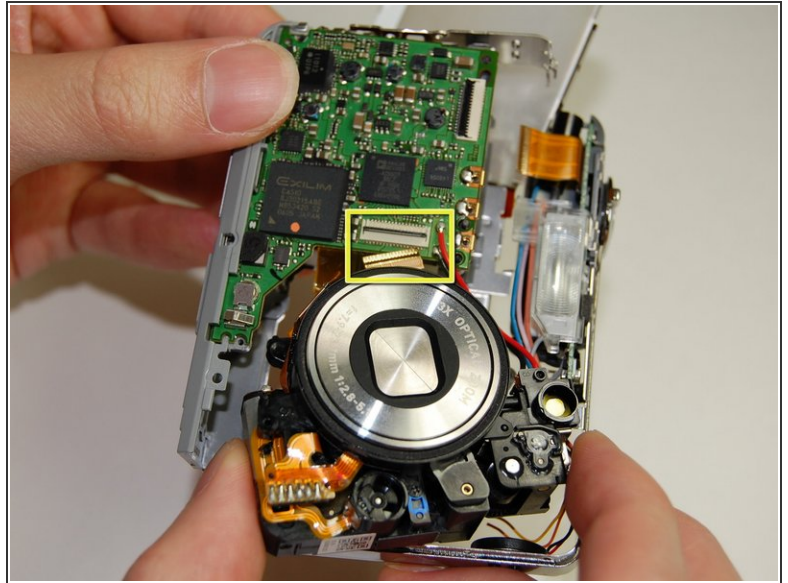
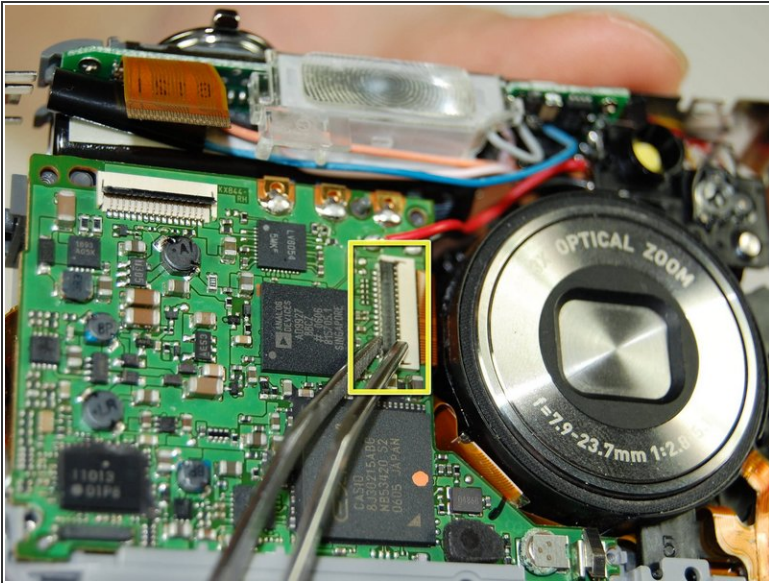
## Step 12



- Carefully remove the L shaped frame from the camera.
- At the bottom of the camera the L shaped frame is being held in by two plastic bumps and a metal tab.
- Pop the frame off the bumps and tabs.

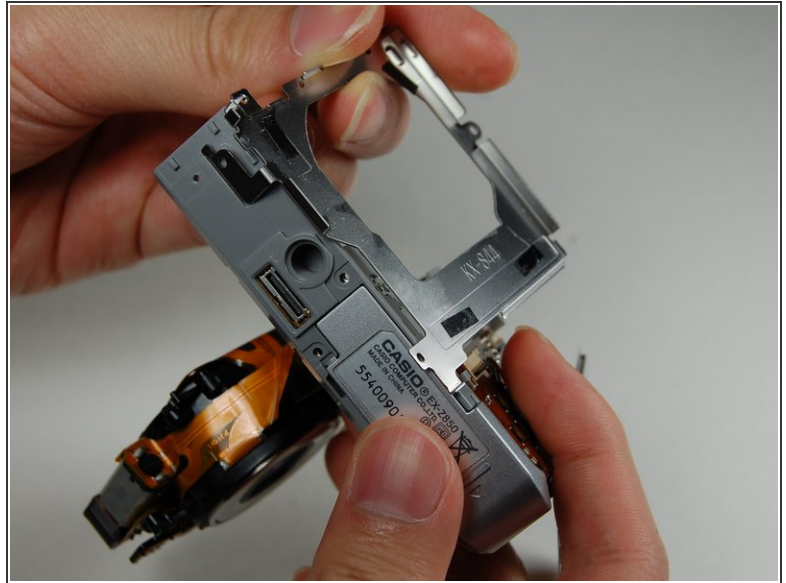
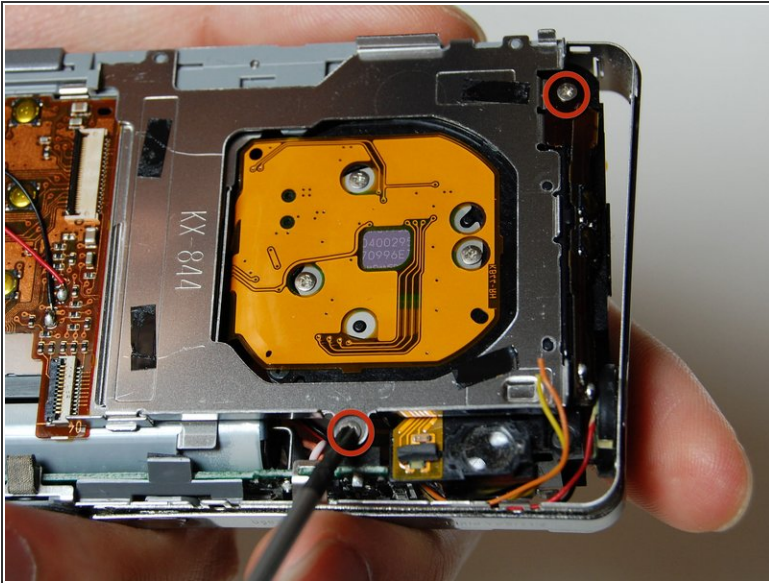
**⚠ Note:** There is a yellow and orange wire soldered onto the camera. Be careful not to pull them off.

## Step 13



- On the logic board next to the lens is a connector with a ribbon.
- Flip the connector and remove the ribbon.

## Step 14



- Remove the frame on the back side of the camera where the LCD screen was.
- Remove the two screws connecting the frame with the camera.
- Slowly pry off the frame from the camera.
- After removing the frame a plastic piece with two yellow button connections should fall off.

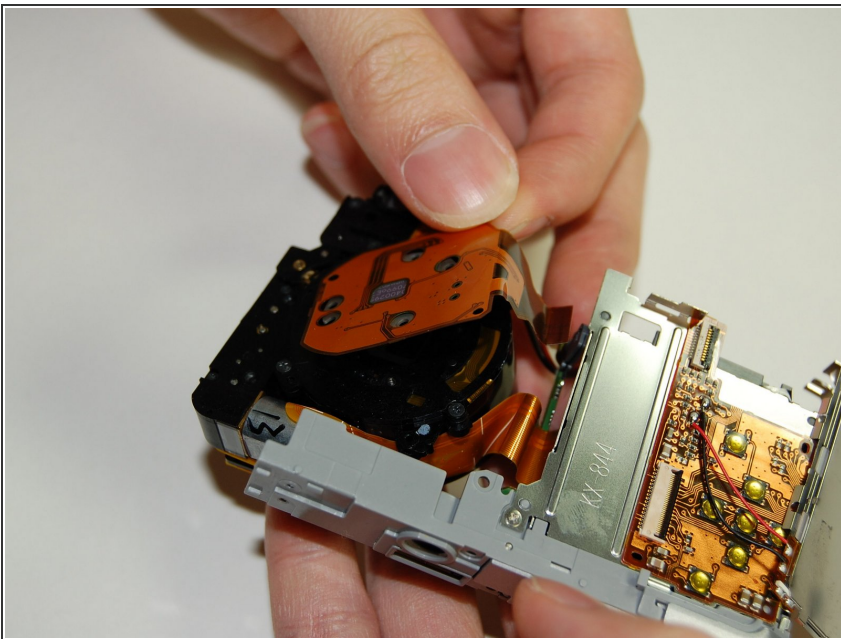
⚠ Note: This plastic piece is soldered to two wires a yellow and orange one.

## Step 15



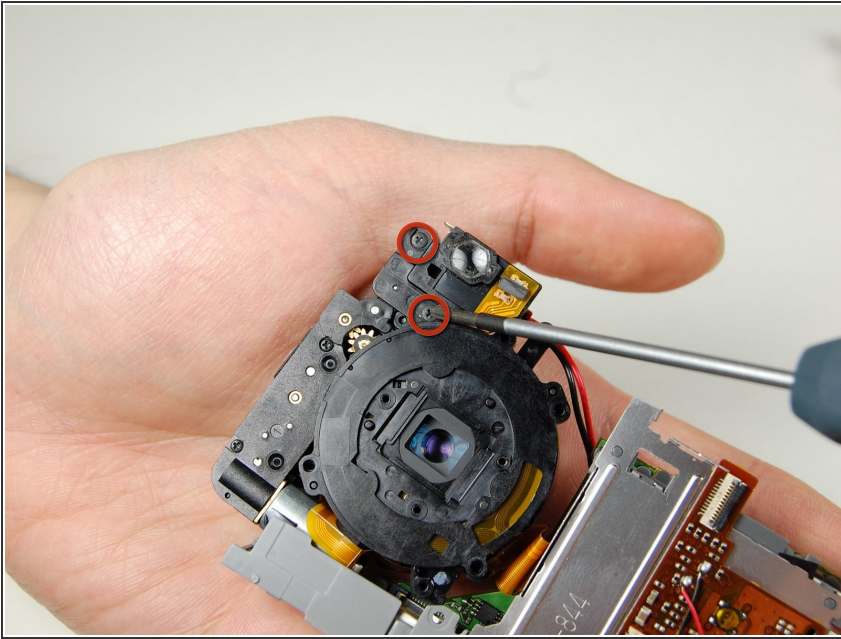
- On the back of the camera where the LCD screen was, remove 3 screws located behind the lens.

## Step 16



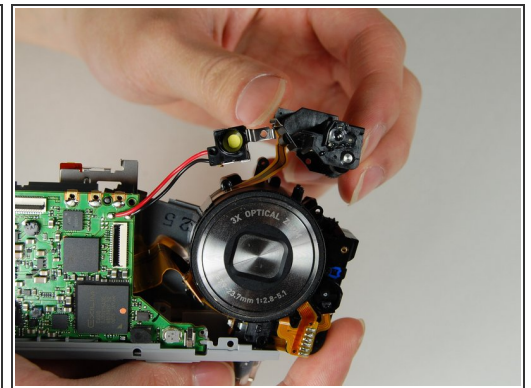
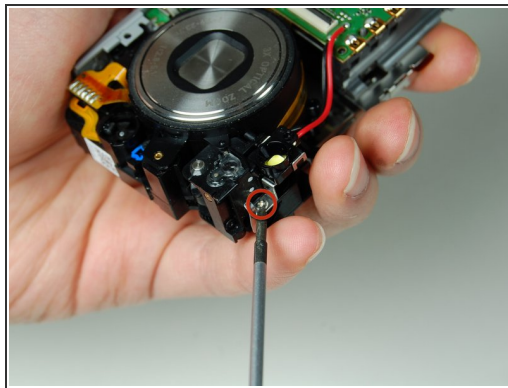
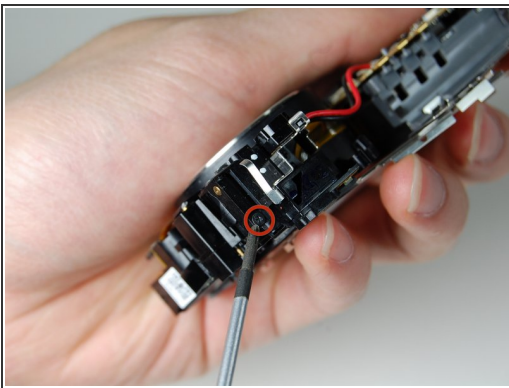
- Remove the large orange ribbon previously held in by screws from the camera.

## Step 17



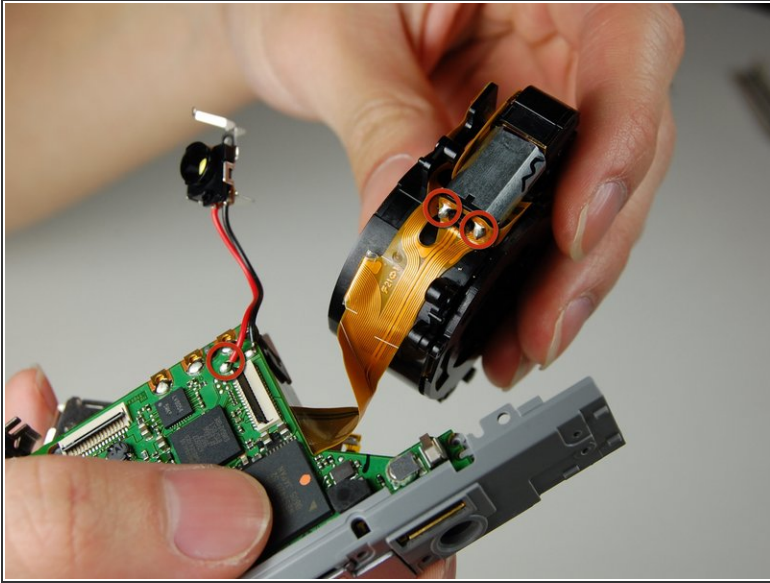
- On the backside of the camera where the indicator lamp is located remove the two screws.

## Step 18



- On the side of the indicator lamp remove a screw.
- On the front side of the indicator lamp remove the a screw.
- This should remove the indicator lamp from the lens.

## Step 19



- Desolder the lens from the logic board.
- Desolder the wire from the logic board.
- The logic board is now detached from the rest of the camera.

To reassemble your device, follow these instructions in reverse order.