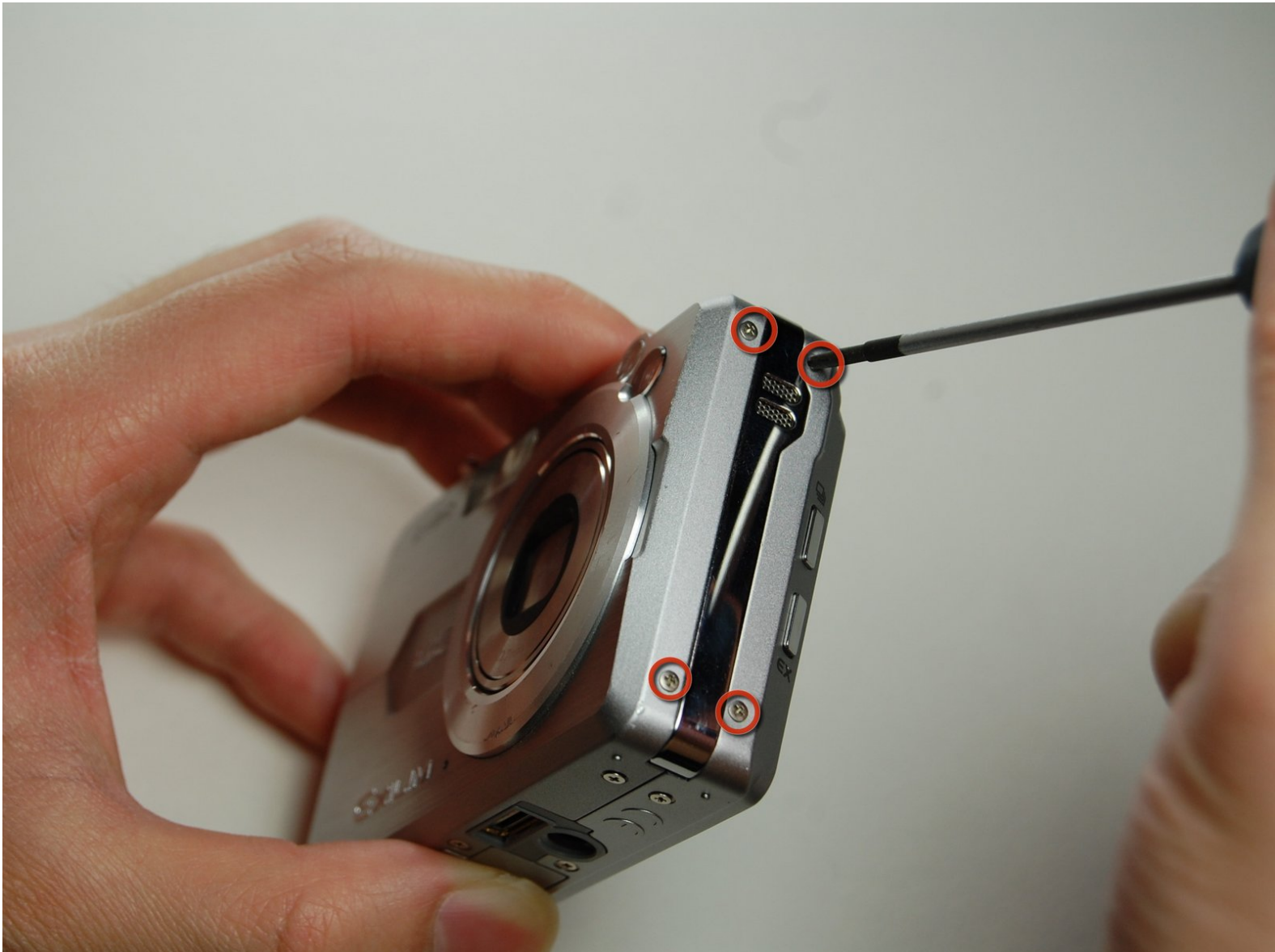




# Casio Exilim EX-Z850 lens assembly replacement

Removing the zoom lens

Written By: Ray



---

## INTRODUCTION

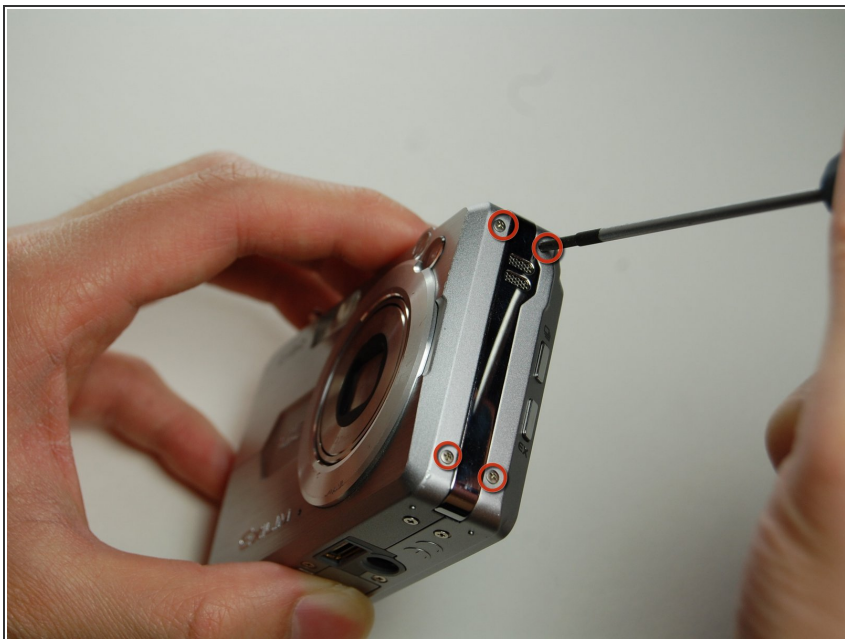
This guide shows you how to remove the zoom lens from the camera.

---

### TOOLS:

- [Phillips #00 Screwdriver](#) (1)
  - [Tweezers](#) (1)
  - [Magnetic Project Mat](#) (1)
-

## Step 1 — Zoom Lens



- Remove the four screws on the side with the speaker

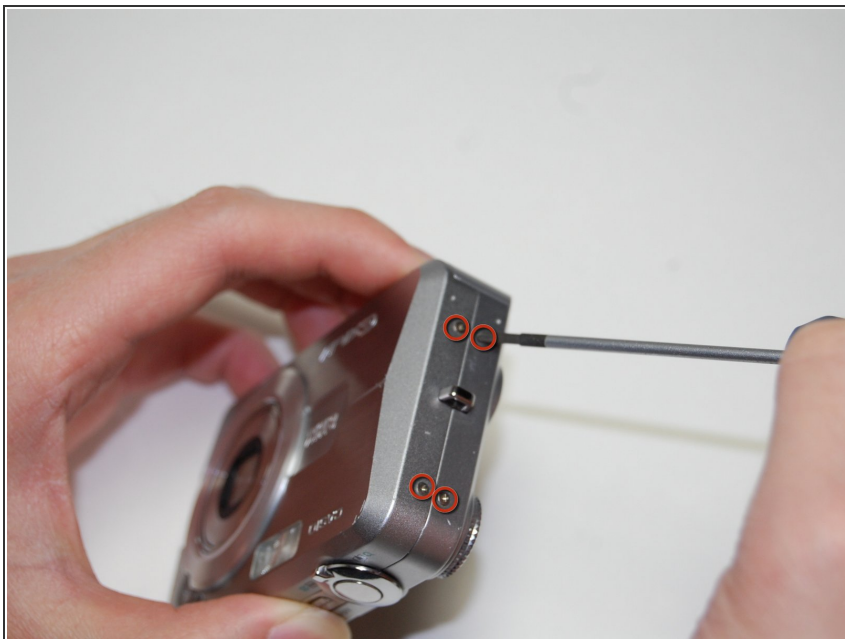
## Step 2



- Remove the four screws from the bottom of the camera.

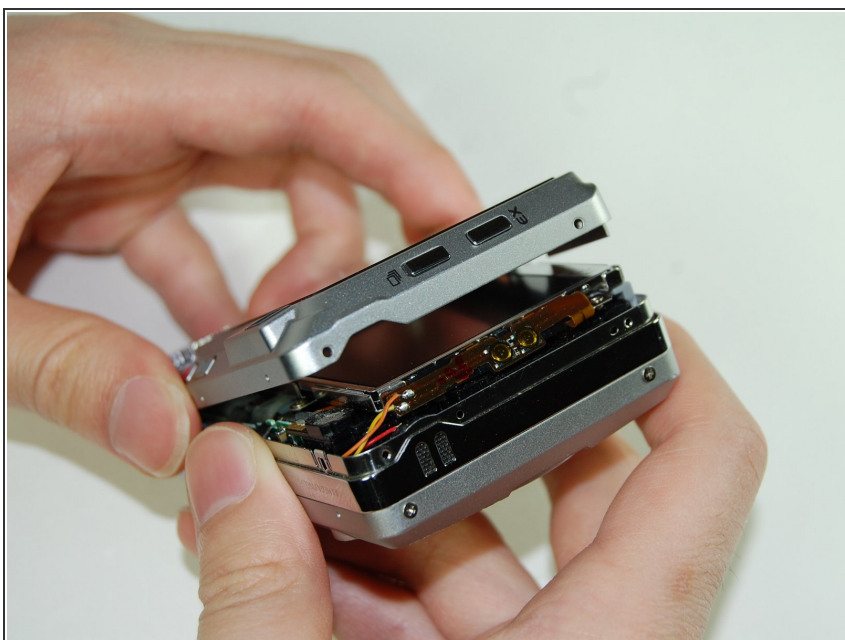
⚠ Note: Bottom screws are longer than the top ones, so label accordingly for easy reassembly

### Step 3



- Remove the four screws on the side opposite of the speaker.

### Step 4



- Once all screws have been removed, gently pry open bottom casing.
- With tweezers, carefully remove ribbon from LCD screen.
- Set bottom casing aside.

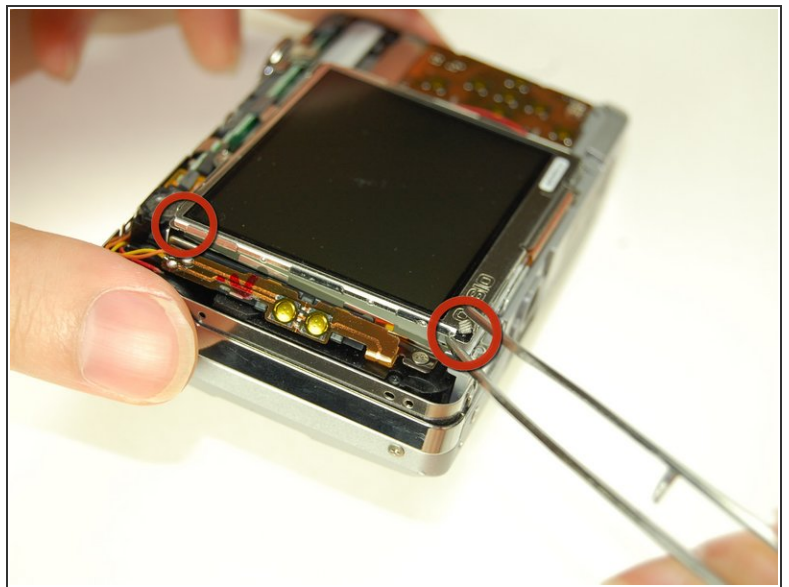
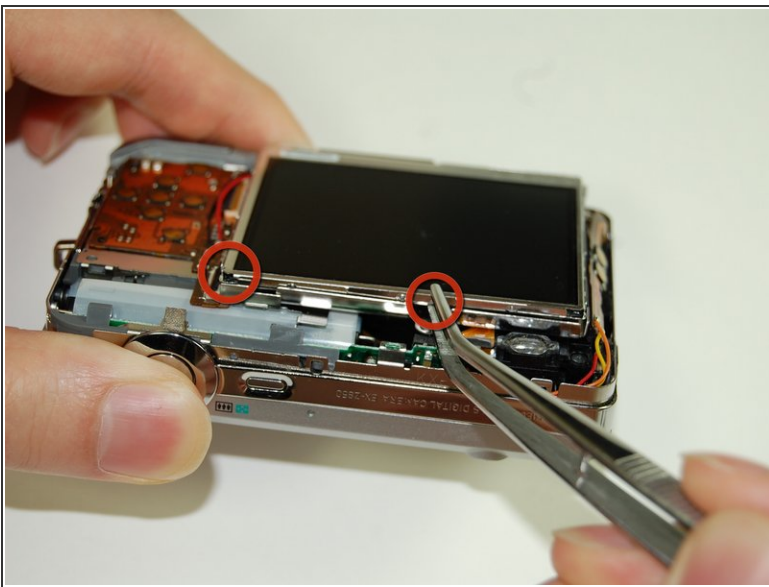


## Step 5



- Remove ribbon from the rear casing.
- Set aside rear casing.

## Step 6

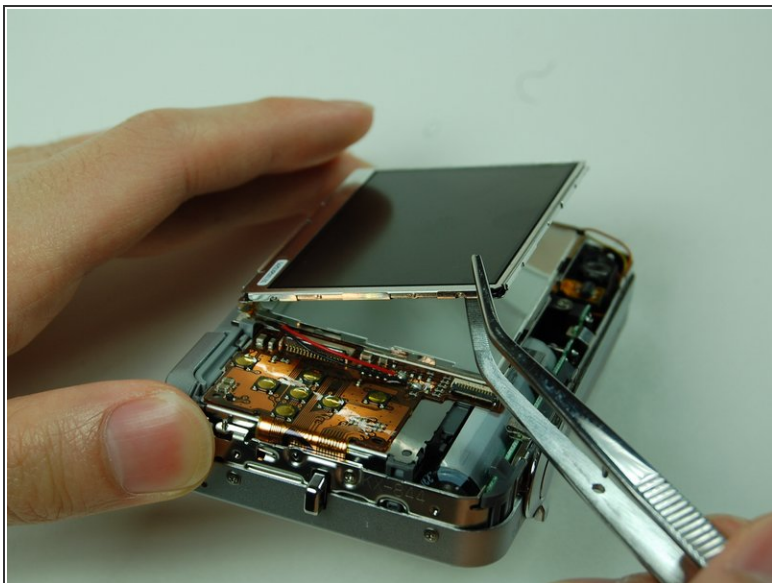


- Use tweezers or prongs to pry the LCD screen off from the opening.



Note: the bottom of the LCD screen is attached to the frame by a few pieces of black tape.

## Step 7



- Lift up the LCD screen, slowly move it to the other side.

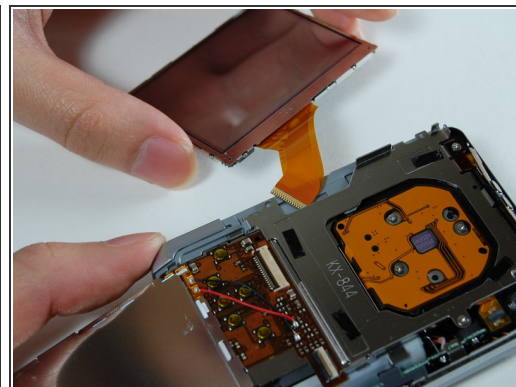
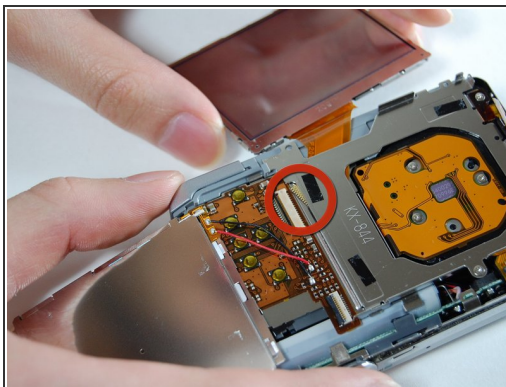
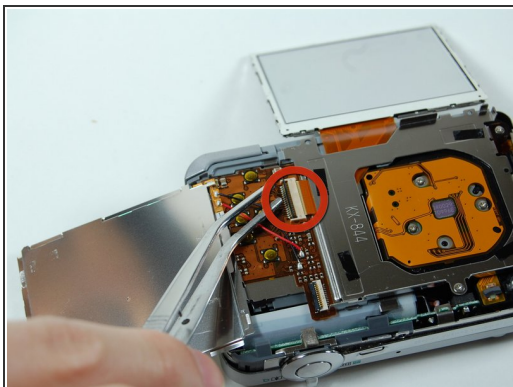
## Step 8



- Pry off the LCD casing which is taped on to the frame.

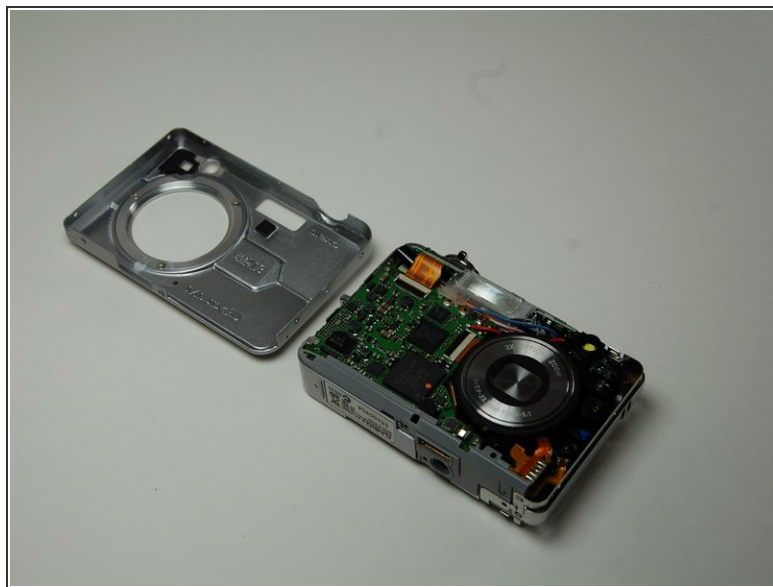
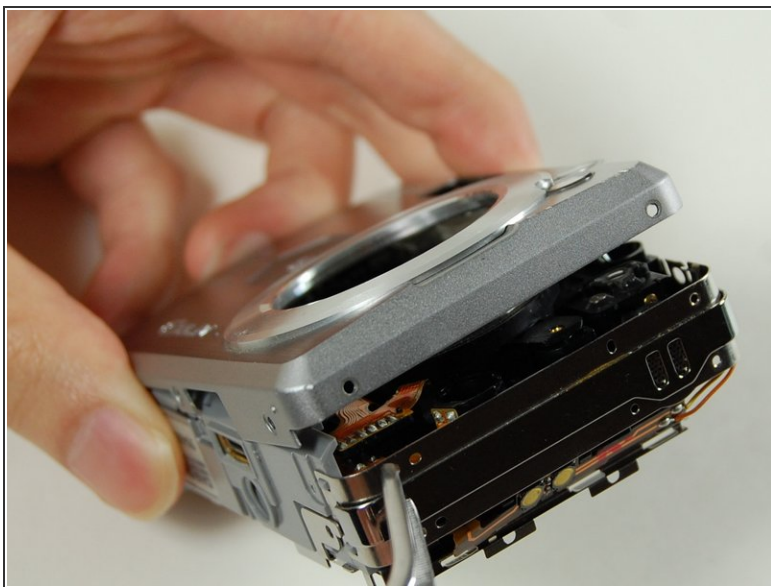


## Step 9



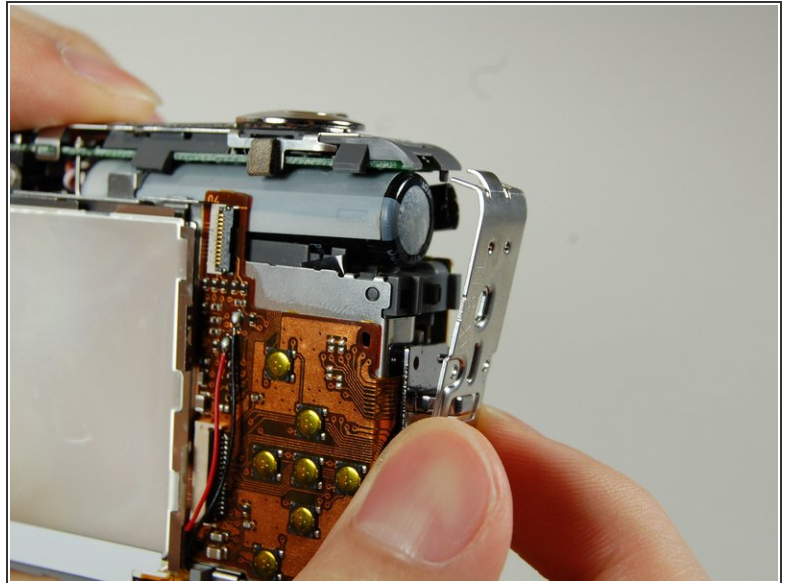
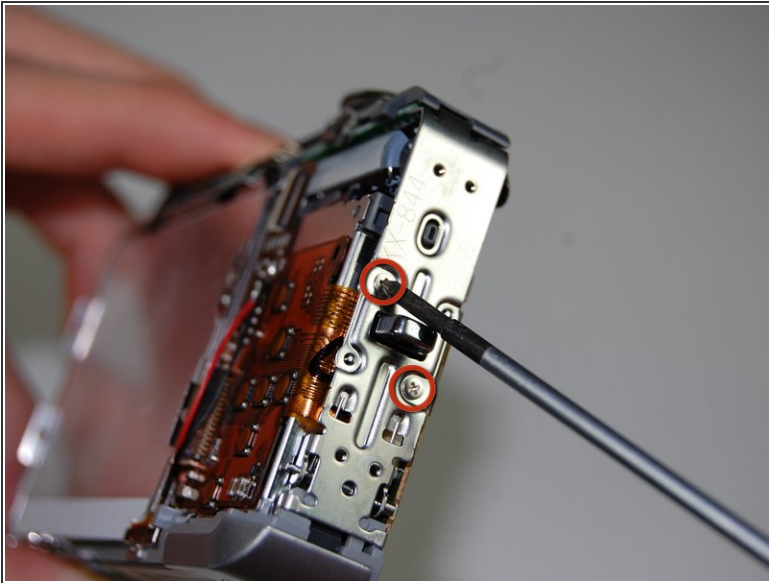
- Flip open the connector holding the ribbon.
- Pull out the LCD screen with the ribbon from the camera.

## Step 10



- Pull apart the front casing.

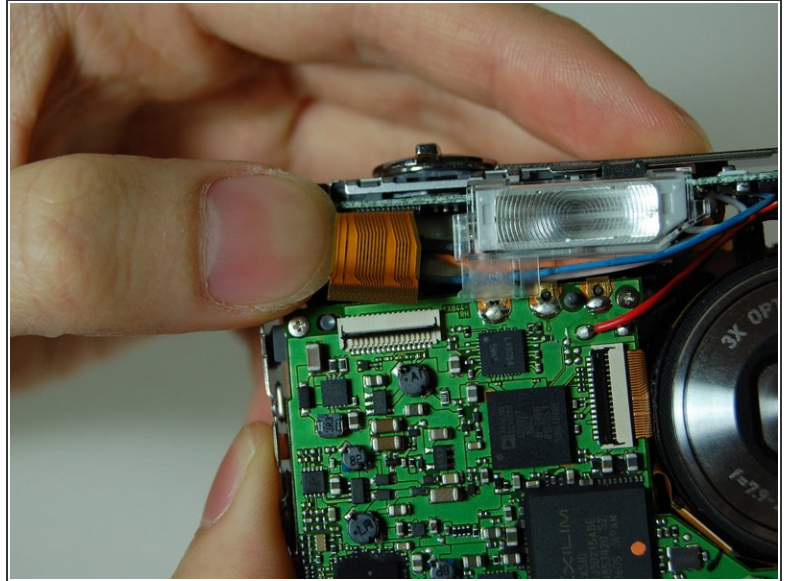
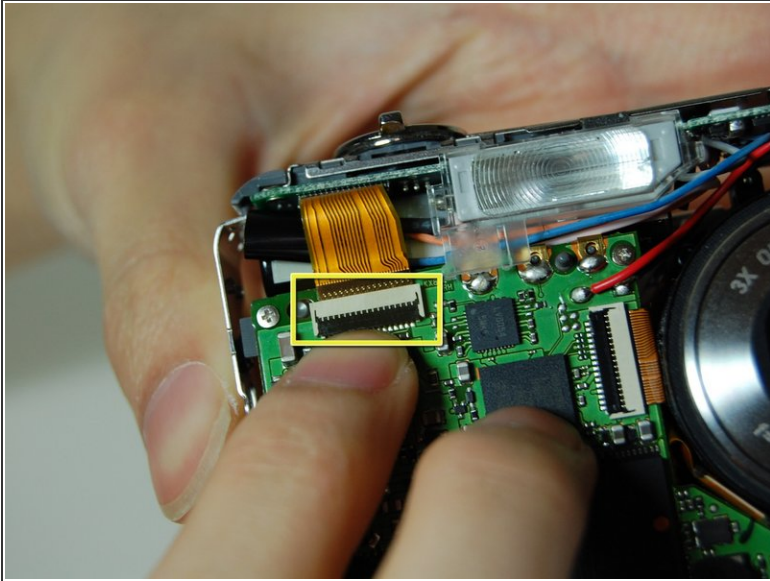
## Step 11



- Remove two screws on the side where the battery is located.
- Remove the lanyard loop after the screws come off.
- Slowly pull the side casing so it becomes dislocated from the top of the camera frame.

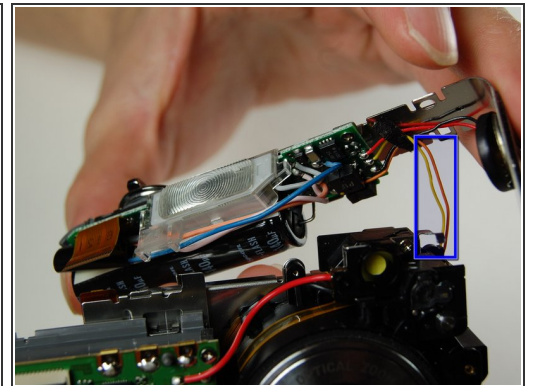
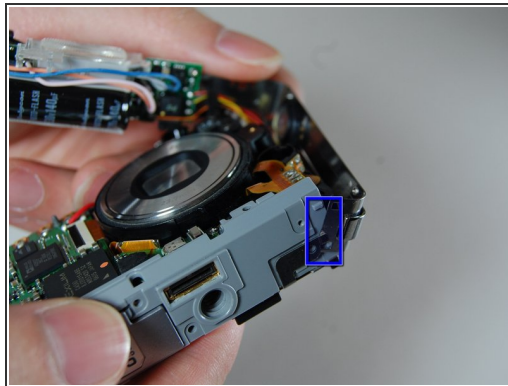
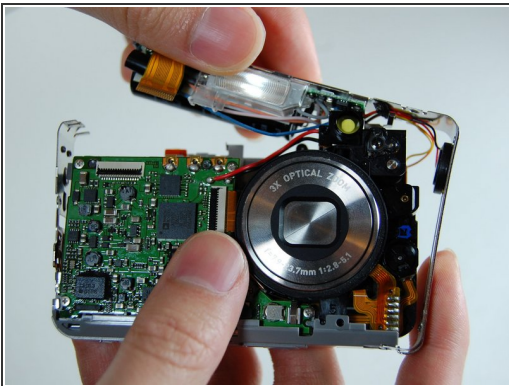


## Step 12



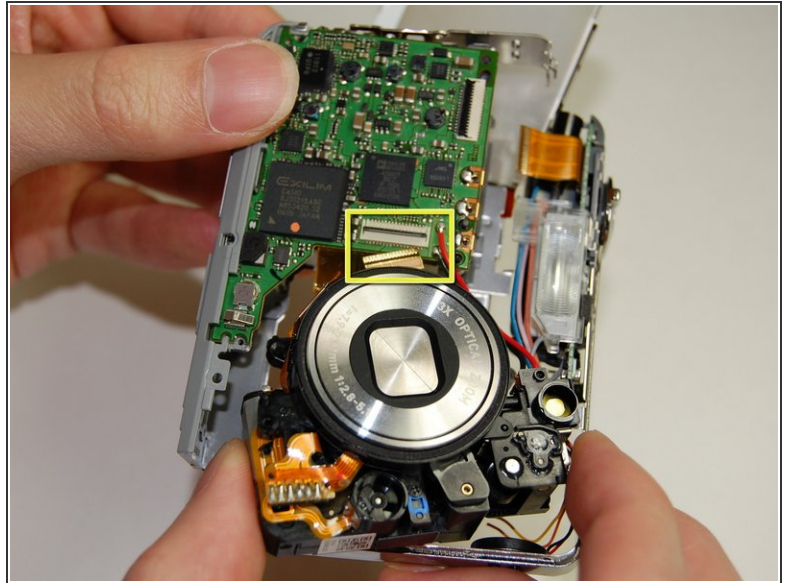
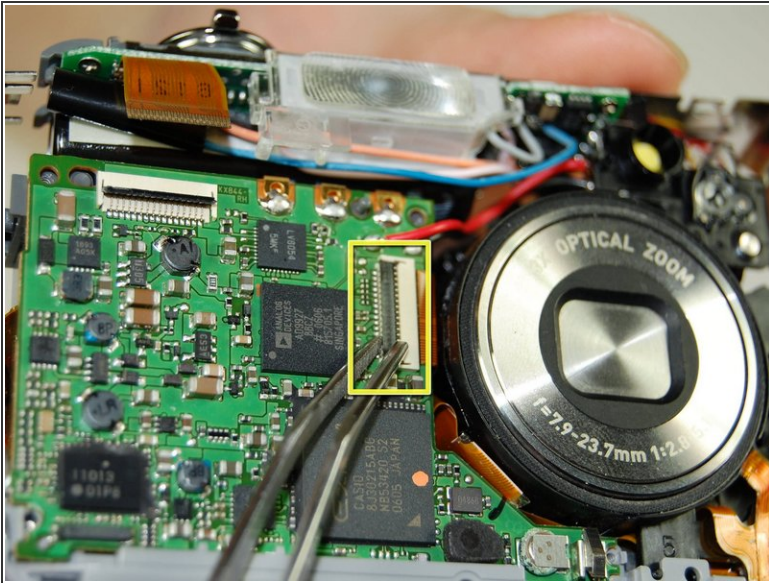
- On the front of the camera near the flash flip the connector holding the ribbon.
- Remove the ribbon from the connector.

## Step 13



- Carefully remove the L shaped frame from the camera.
  - At the bottom of the camera the L shaped frame is being held in by two plastic bumps and a metal tab. Pop the frame off the bumps and tabs.
- ⚠ Note: There is a yellow and orange wire soldered onto the camera. Be careful not to pull them off.
- The blue box is the speaker box.

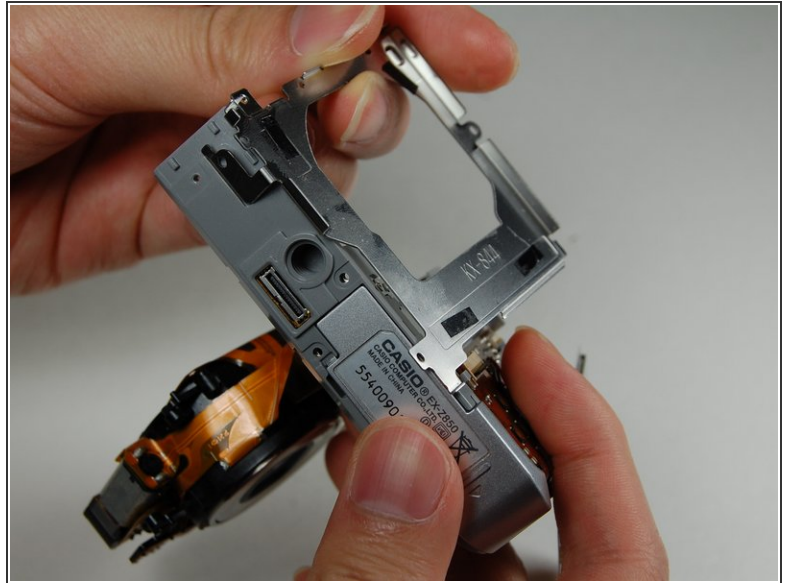
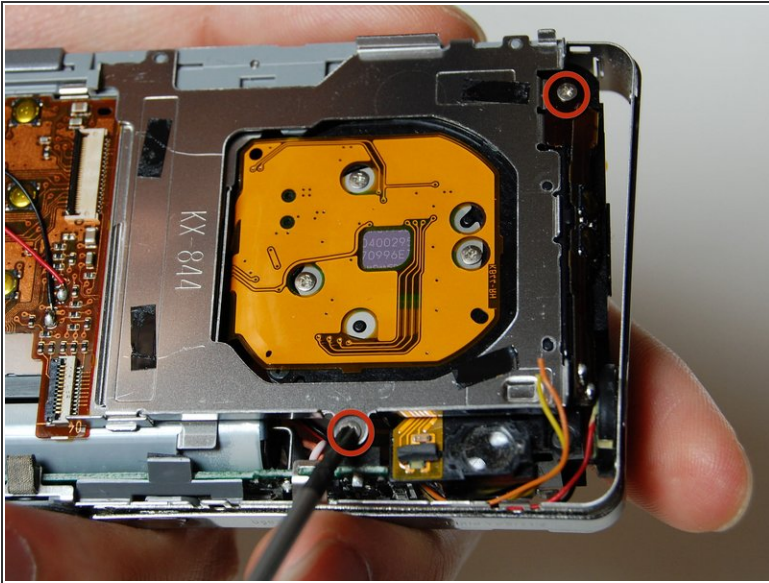
## Step 14



- On the logic board next to the lens is a connector with a ribbon.
- Flip the connector and remove the ribbon



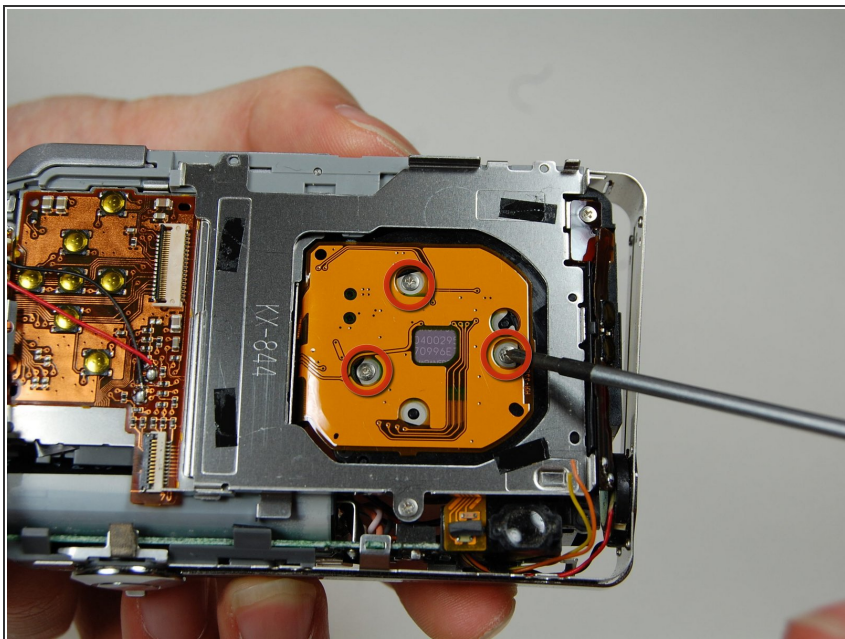
## Step 15



- Remove the frame on the back side of the camera where the LCD screen was.
- Remove the two screws connecting the frame with the camera
- Slowly pry off the frame from the camera
- After removing the frame a plastic piece with two yellow button connections should fall off.
- Note: This plastic piece is soldered to two wires a yellow and orange one.

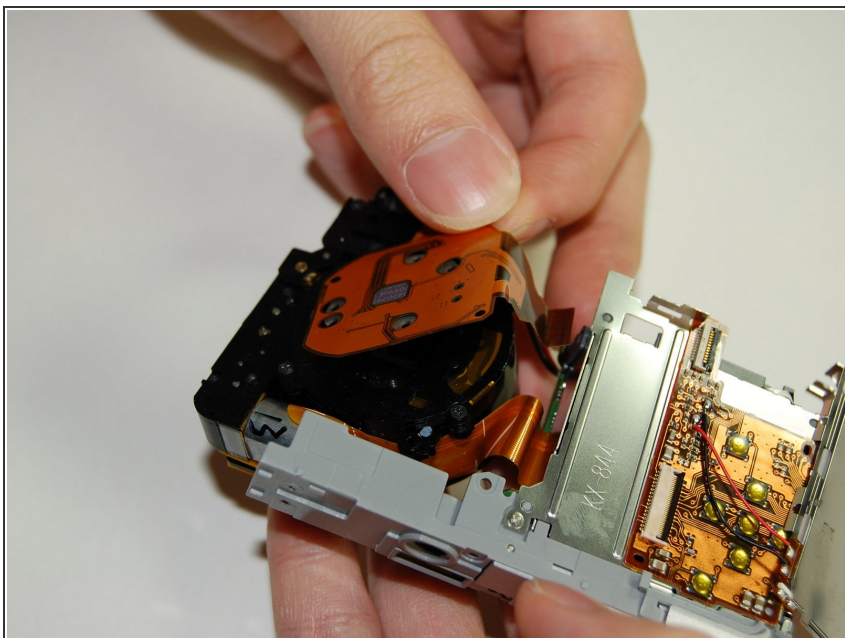


## Step 16



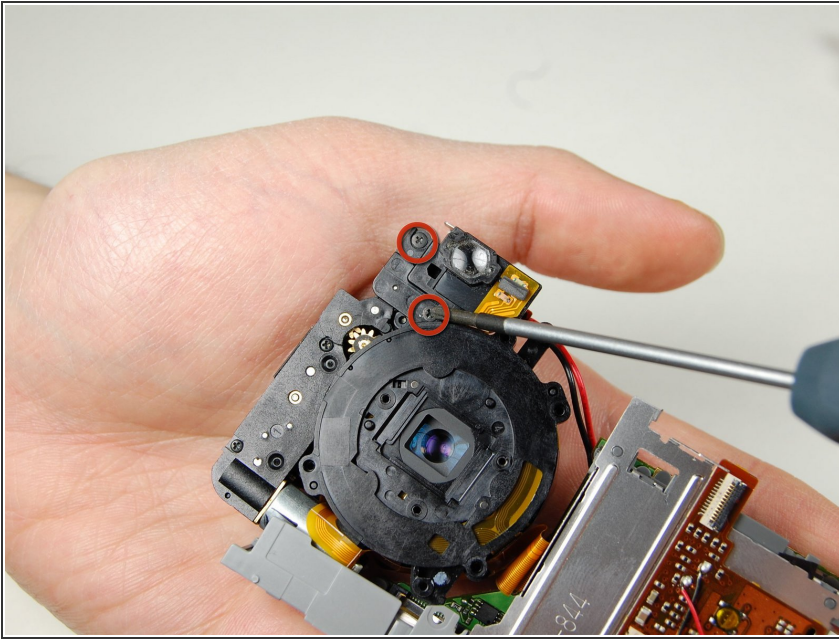
- On the back of the camera where the LCD screen was, remove 3 screws located behind the lens.

## Step 17



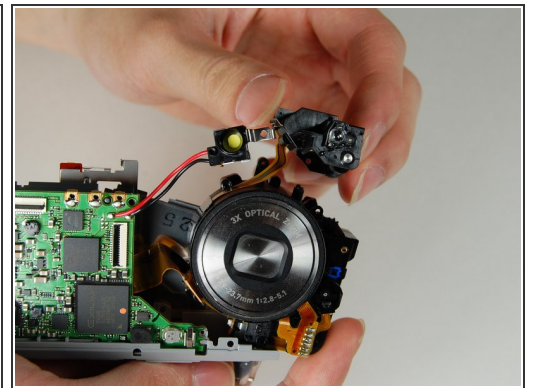
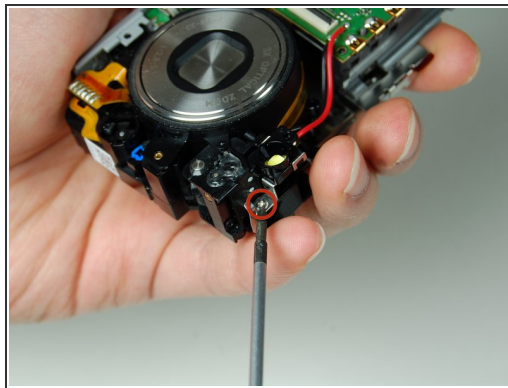
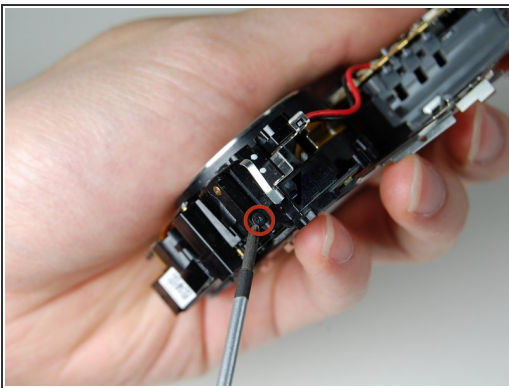
- Remove the large orange ribbon previously held in by screws from the camera.

## Step 18



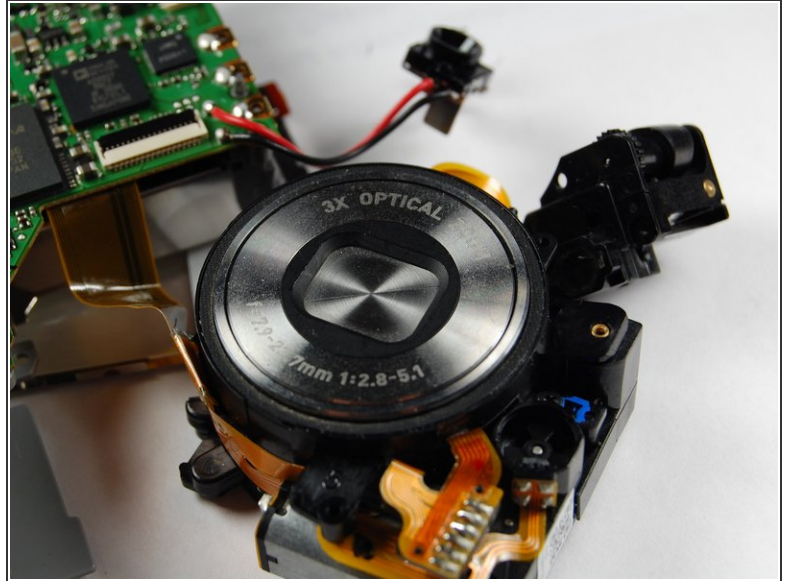
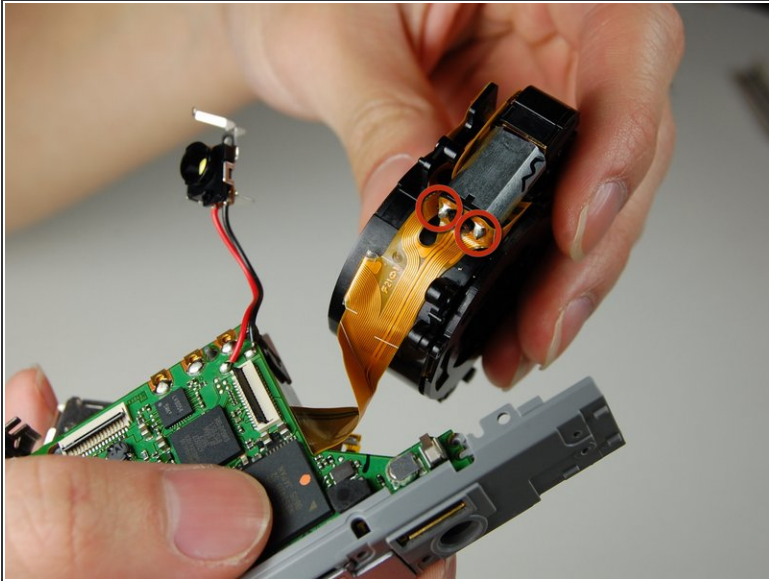
- On the backside of the camera where the indicator lamp is located remove the two screws.

## Step 19



- On the side of the indicator lamp remove a screw.
- On the front side of the indicator lamp remove the a screw.
- This should remove the indicator lamp from the lens.

## Step 20



- The lens is now detached from the camera except for the ribbon soldered onto the logic board.

To reassemble your device, follow these instructions in reverse order.