



Cassida Counterfeit Detector Disassembly

We will be showing you how to break down the device to the basic parts.

Written By: TREVOR j NELMS

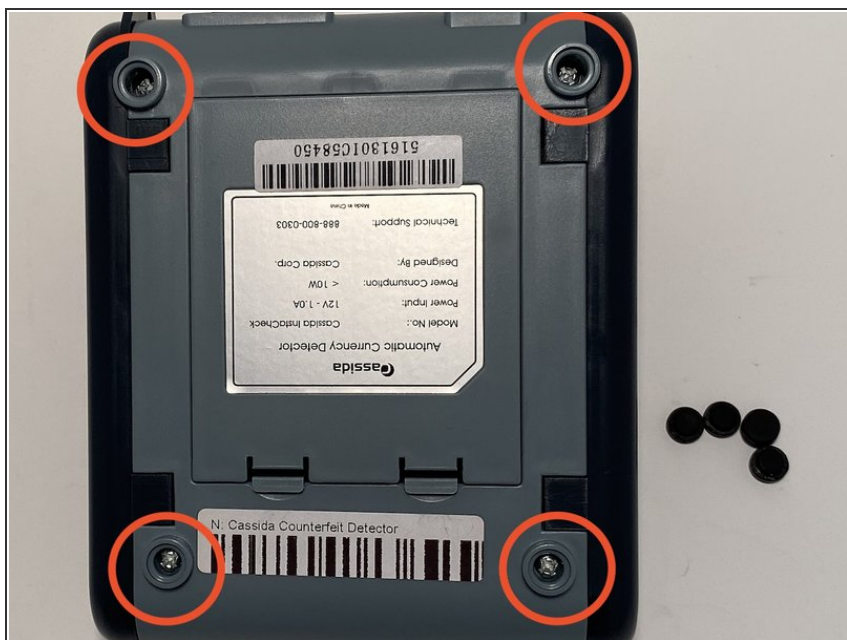




TOOLS:

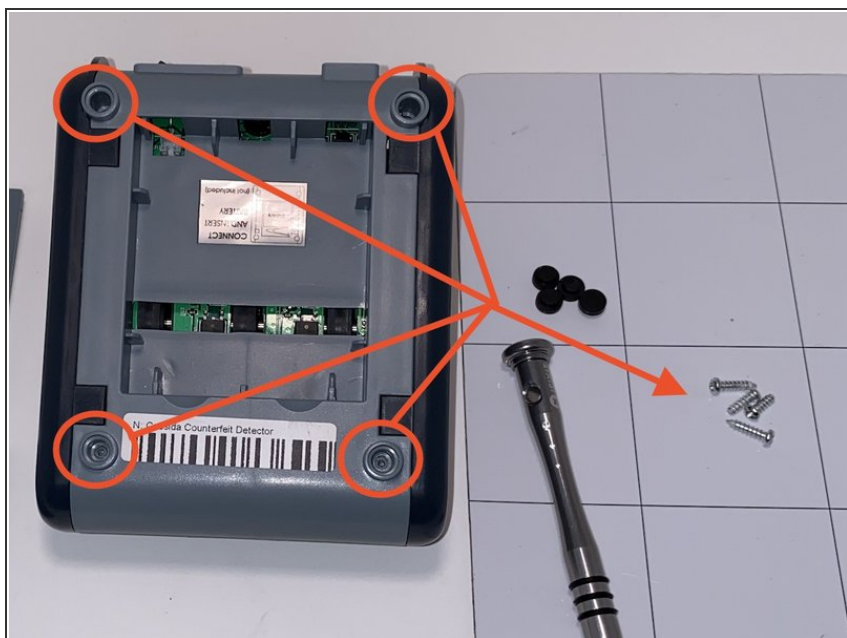
- [Phillips #1 Screwdriver](#) (1)
 - [Metal Spudger](#) (1)
-

Step 1 — Cassida Counterfeit Detector Disassembly



- Remove the rubber legs.

Step 2



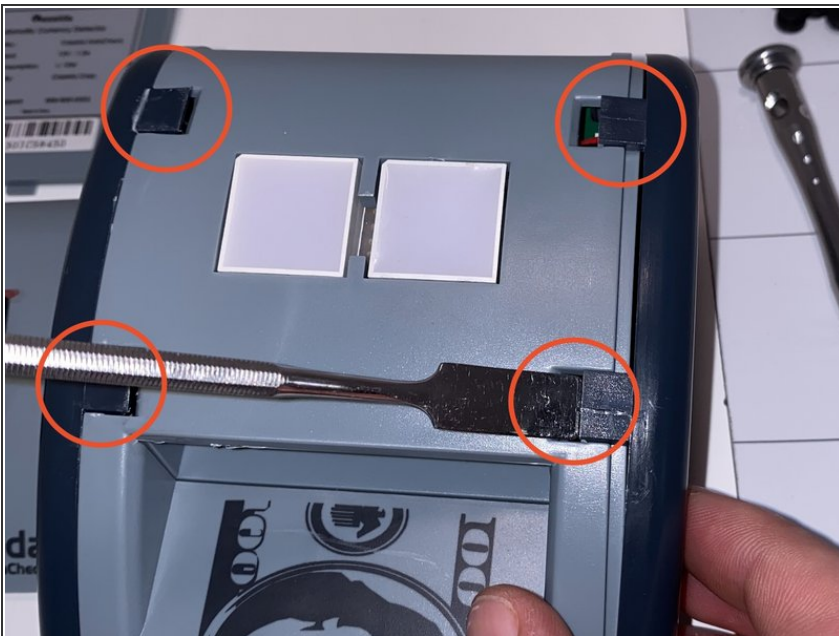
- Using a Phillips #1 bit, remove the circled screws.

Step 3



- Pry the top cover off, starting from the side with the switch, with a metal spudger.

Step 4



- Pop the 4 tabs on the top of the machine up with a metal spudger and then remove the 2 side panels.

Step 5



- Disconnect the wires circled and then remove the top section from the bottom section just by pulling the top section straight up and holding onto the bottom.

Step 6



- All the parts disassembled.

To reassemble your device, follow these instructions in reverse order.