



# Cassida Counterfeit Detector LCD Display Replacement

Removal and replacement of LCD display.

Written By: TREVOR j NELMS





## TOOLS:

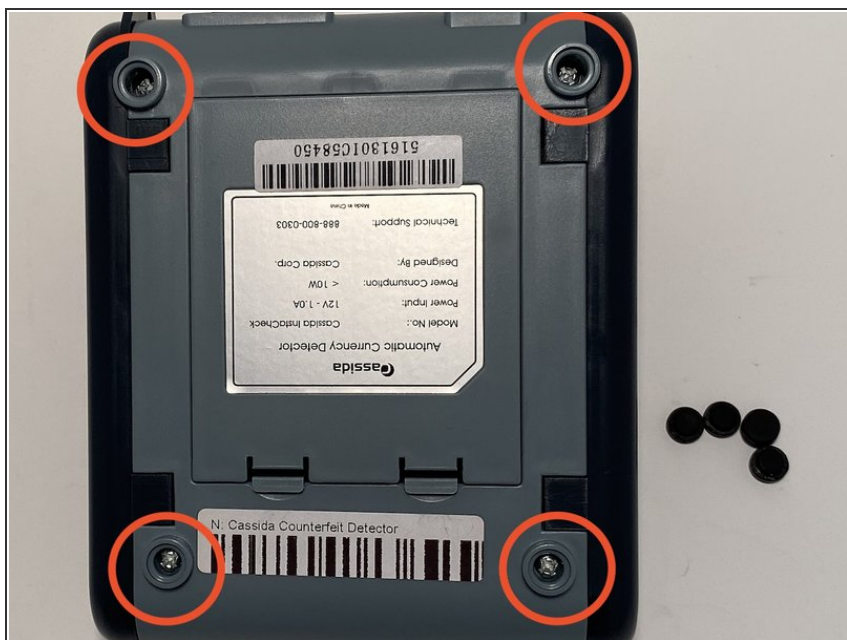
- [Phillips #1 Screwdriver](#) (1)
- [Metal Spudger](#) (1)



## PARTS:

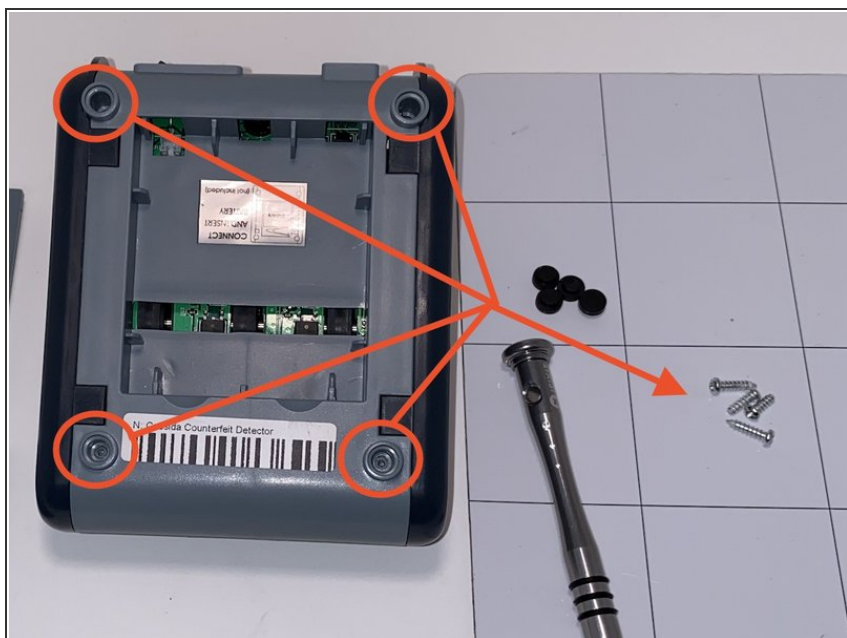
- [LCD display for Cassida Counterfeit Detector](#) (1)

## Step 1 — Cassida Counterfeit Detector Disassembly



- Remove the rubber legs.

## Step 2



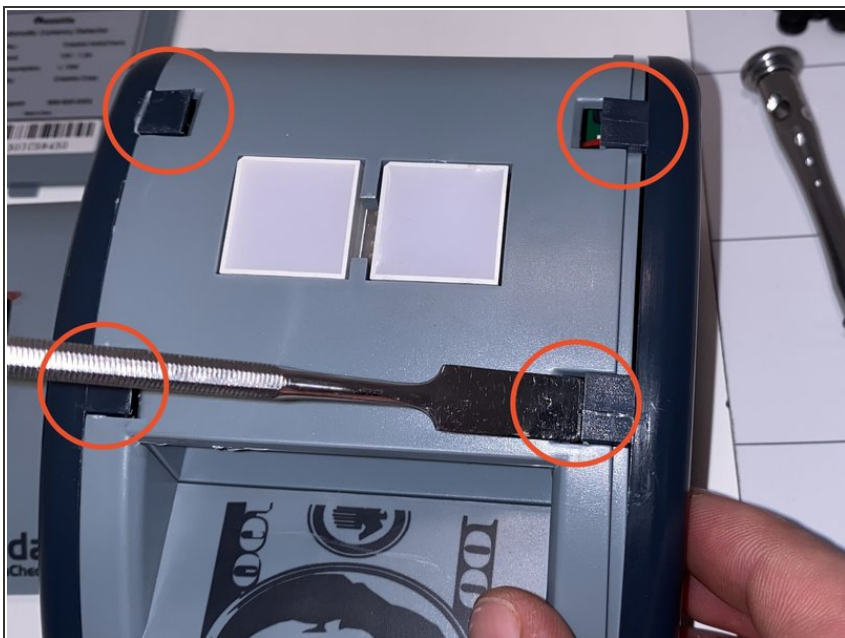
- Using a Phillips #1 bit, remove the circled screws.

### Step 3



- Pry the top cover off, starting from the side with the switch, with a metal spudger.

### Step 4



- Pop the 4 tabs on the top of the machine up with a metal spudger and then remove the 2 side panels.



## Step 5



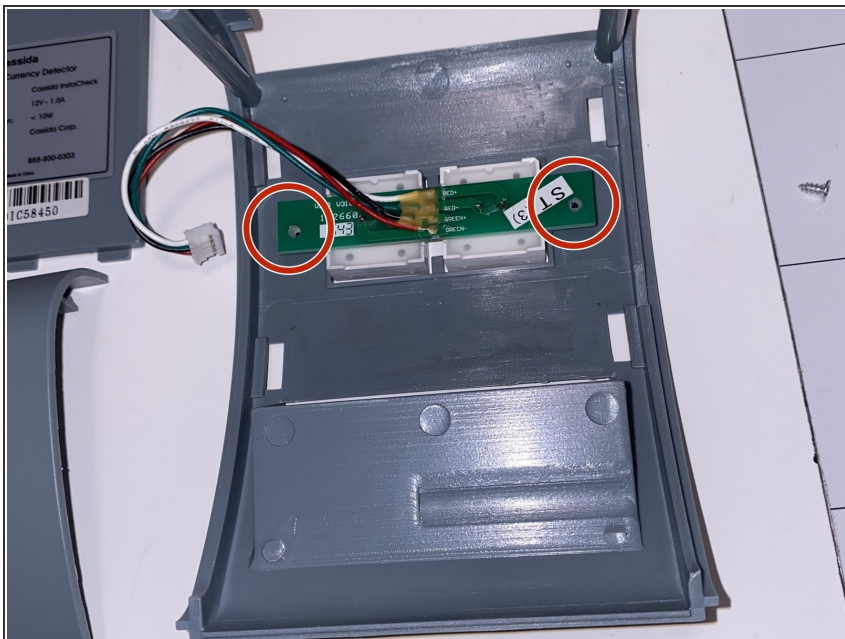
- Disconnect the wires circled and then remove the top section from the bottom section just by pulling the top section straight up and holding onto the bottom.

## Step 6



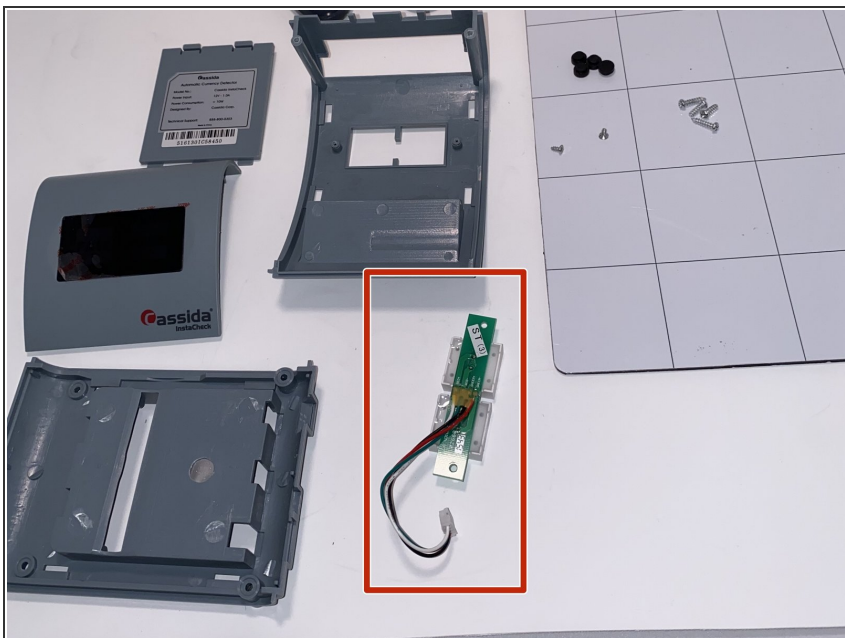
- All the parts disassembled.

## Step 7 — The LCD Display



- Remove the two screws on the underside of the top case with a Phillips #1 screwdriver.

## Step 8



- This is the LCD detached. Install your new LCD display with the two screws and then plug the connector back into the motherboard.

To reassemble your device, follow these instructions in reverse order.