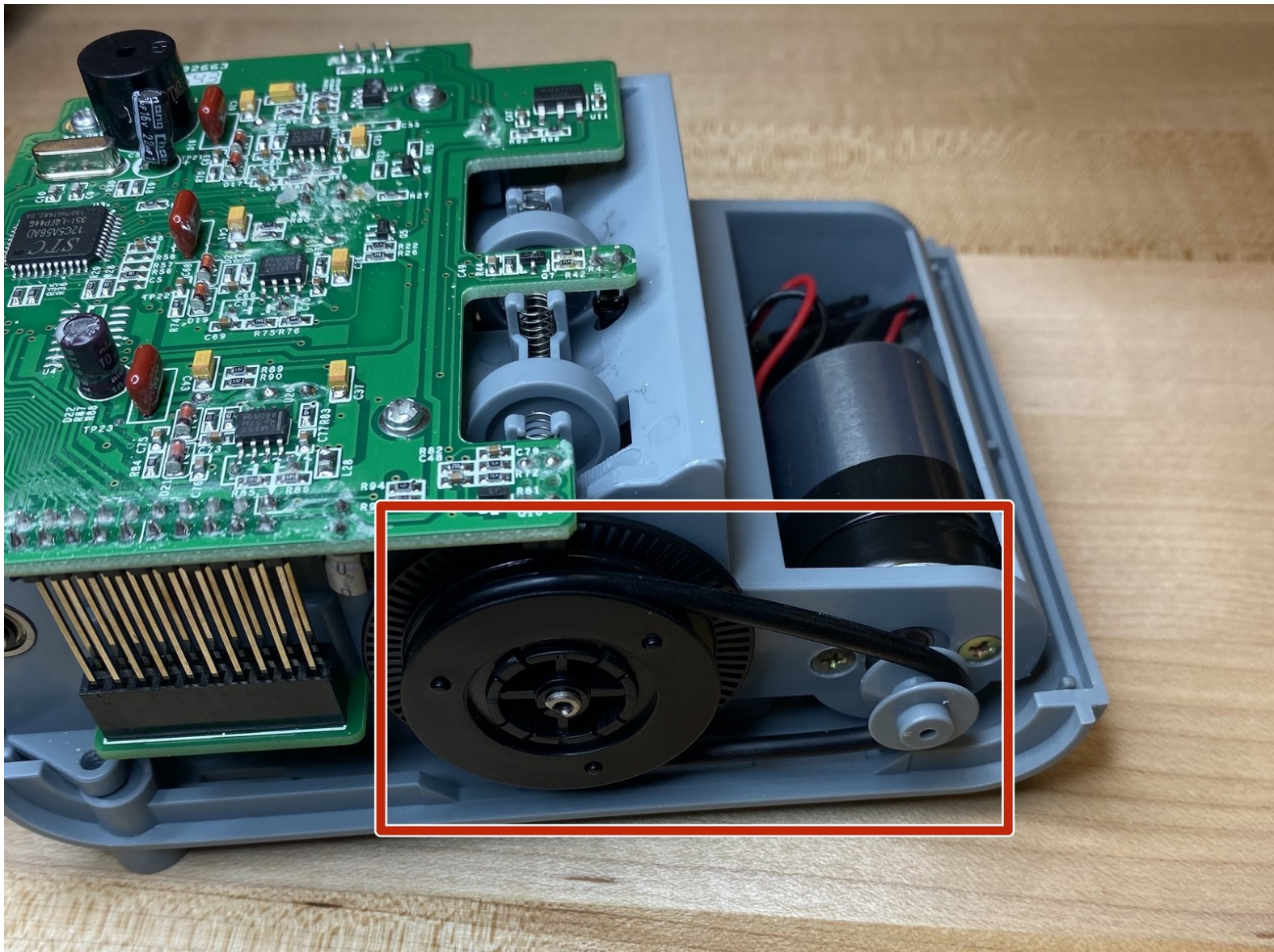




# Cassida Counterfeit Detector Motor Band Replacement

Show where the motor band is within the device in case it breaks and needs replacement.

Written By: TREVOR j NELMS





## TOOLS:

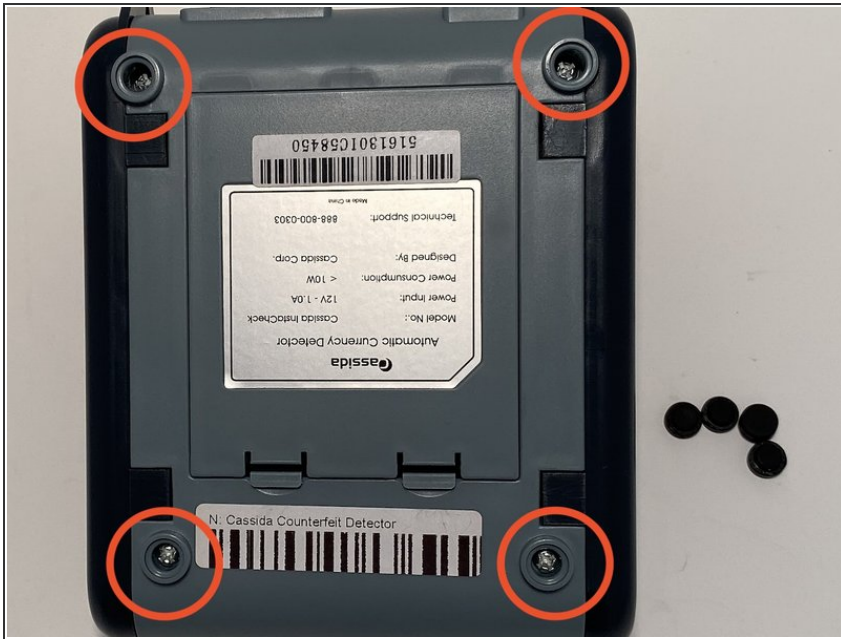
- [Phillips #1 Screwdriver](#) (1)
- [Metal Spudger](#) (1)



## PARTS:

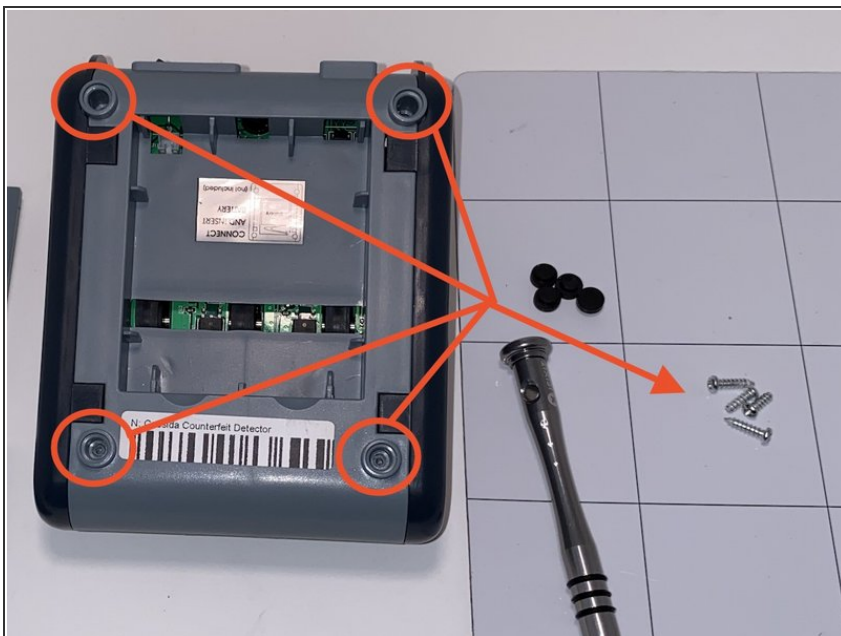
- [Black rubber band belt](#) (1)

## Step 1 — Cassida Counterfeit Detector Disassembly



- Remove the rubber legs.

## Step 2



- Using a Phillips #1 bit, remove the circled screws.

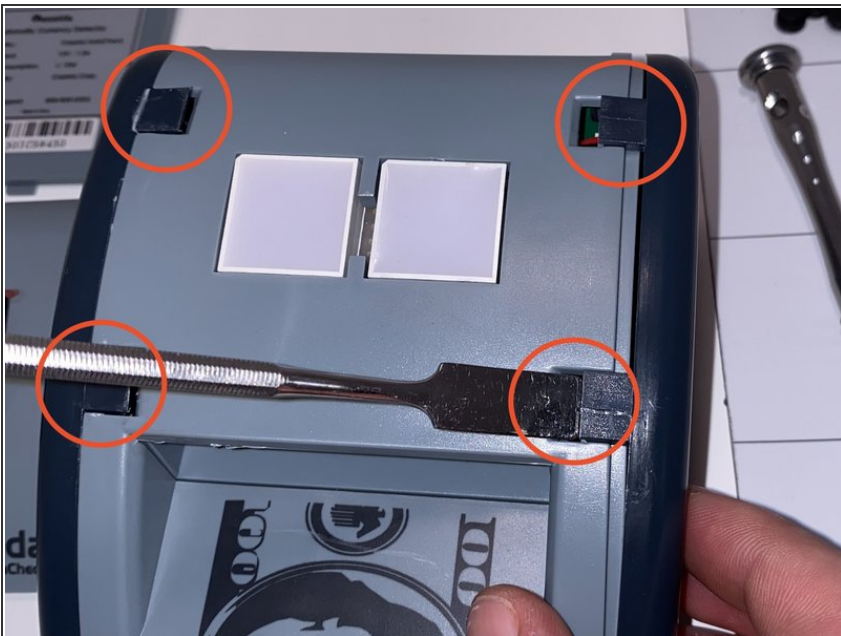


### Step 3



- Pry the top cover off, starting from the side with the switch, with a metal spudger.

### Step 4



- Pop the 4 tabs on the top of the machine up with a metal spudger and then remove the 2 side panels.

## Step 5



- Disconnect the wires circled and then remove the top section from the bottom section just by pulling the top section straight up and holding onto the bottom.

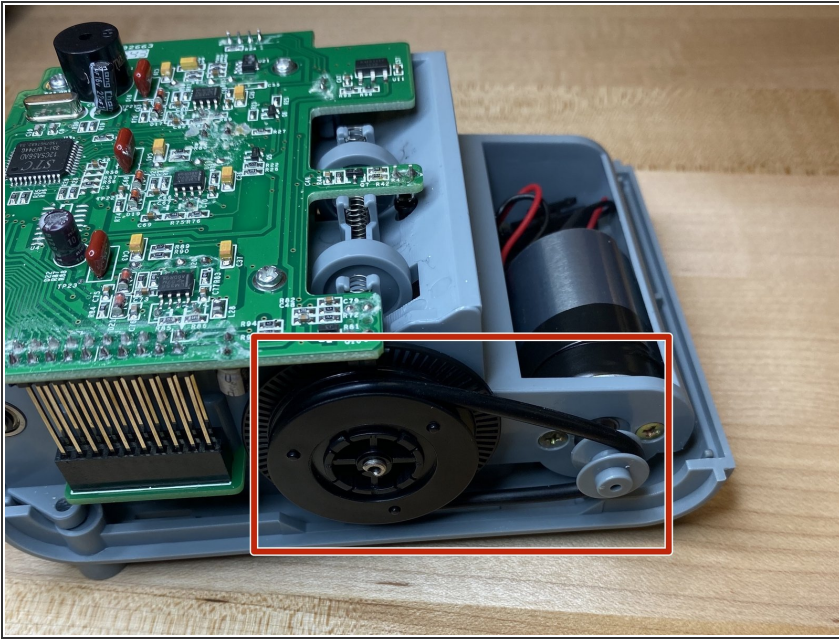
## Step 6



- All the parts disassembled.

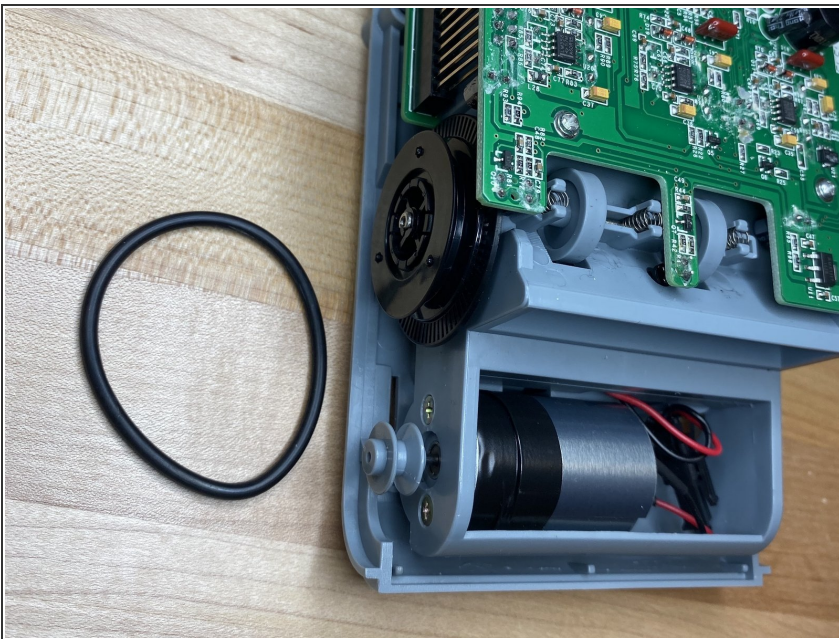


## Step 7 — Motor Band



- This is the band you will be replacing. If it is broken or loose, remove from the device completely.

## Step 8



- Install new band by placing it around the small grey pulley and then working it around the larger black pulley.

To reassemble your device, follow these instructions in reverse order.