



# Ceiling Fan Light Fixture Replacement

This guide will show users how to replace the lighting fixture that sits below most ceiling fans.

Written By: Garrett Janetzky



---

## INTRODUCTION

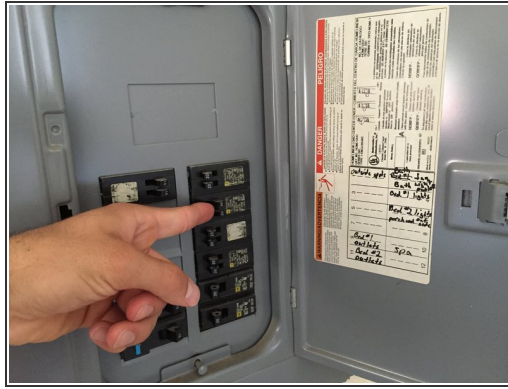
More than just a busted light bulb below your ceiling fan? Use this guide to replace the lighting fixture and restore the visual brilliance of your room.

---

### TOOLS:

- [Phillips #1 Screwdriver](#) (1)
  - [Adjustable Wrench](#) (1)
-

## Step 1 — Light Fixture



 Working with electrical wires could lead to electrocution.

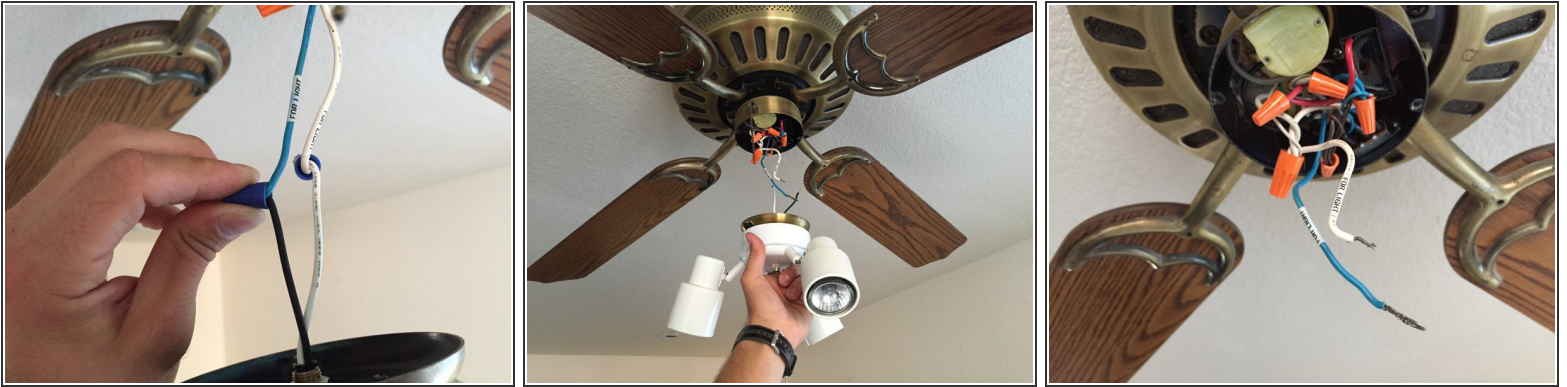
- Find your circuit breaker panel and turn off the breaker that corresponds to your ceiling lights.
  - Do this by pushing it to the right.
- Also flip your light switch to off.

## Step 2



- Remove the two 1.4 mm Phillips head screws that hold the fixture to the fan itself.
- Once loose, pull down to expose the two connecting wires.

### Step 3



- Disconnect these wires by twisting the caps in a counter-clockwise direction.
- You only need to disconnect the wires coming from the lighting fixture.
- Once both caps are removed, simply pull the wires apart to remove the fixture.

### Step 4



- Loosen the nut holding the ceiling fan piece to the lighting fixture.
- This step may require a crescent wrench if finger force is not enough.

## Step 5



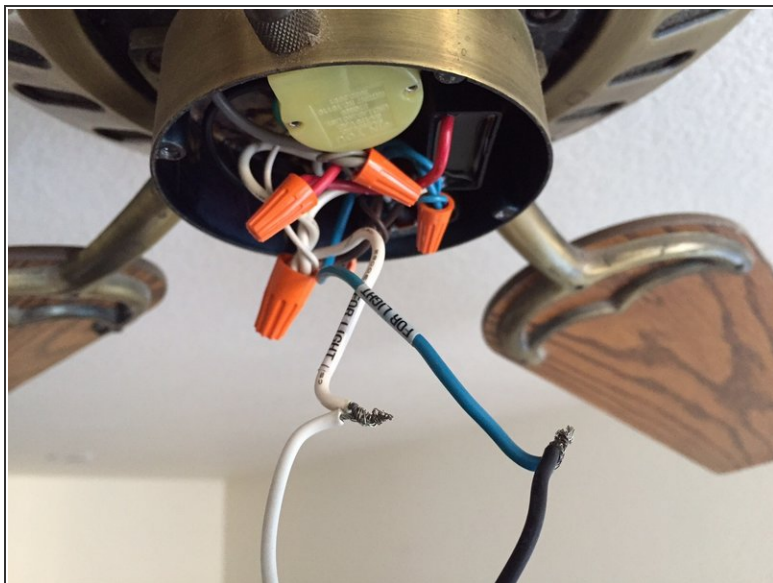
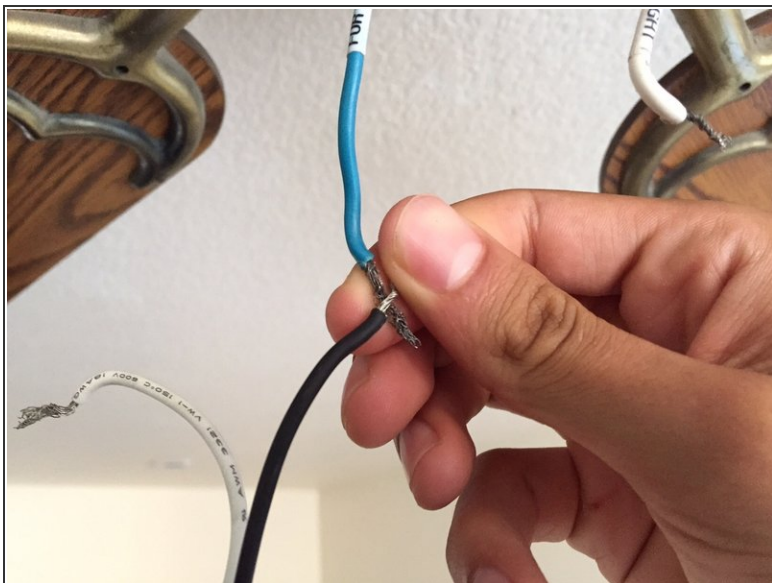
- Pull upwards to remove the fan piece that holds the light fixture.
- Your model may require you to twist this piece in a counter-clockwise motion to remove.

## Step 6



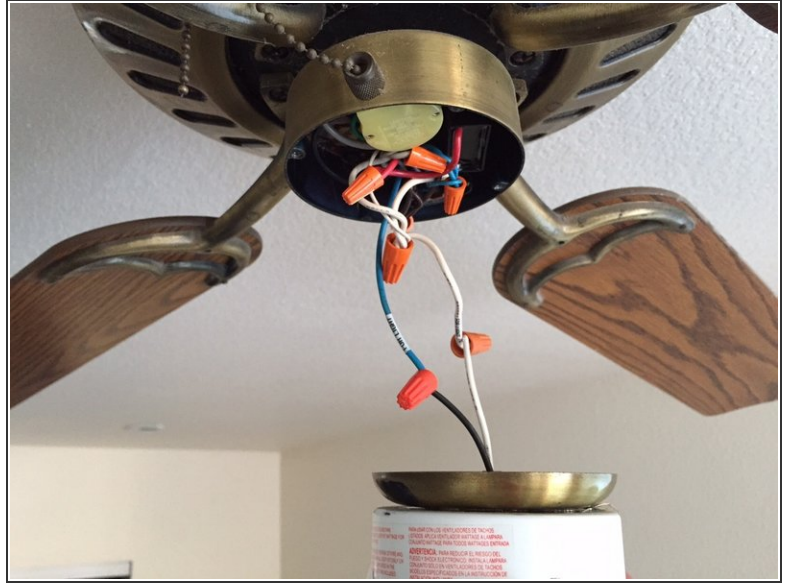
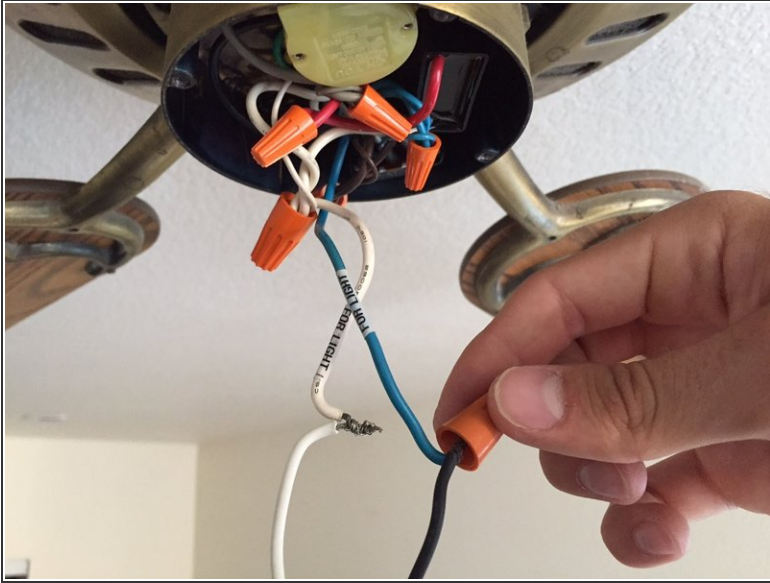
- Switch out the old fixture with your new fixture by doing the last two steps in reverse order.

## Step 7



- To connect your new fixture, locate the black wire from your light and the colored wire from the fan.
  - ☒ Be sure to attached the colored wires to each other, and white wires to each other. (Positive-Positive, Negative-Negative)
- Twist these together. Do the same with the two white wires.

## Step 8



- Your new light fixture should come with replacement caps. Twist these in a clockwise motion over your wire ends to ensure connection.
- ☑ The old caps work just as well for this if you were not given new ones.

## Step 9



- Be sure to neatly tuck in all wires when re-attaching the fixture.
- ☑ Failure to do this will result in not being able to correctly close the gap and put in the screws.

## Step 10



- Flip your breaker back on, turn on your light switch, and enjoy your new lights!

To reassemble your device, follow these instructions in reverse order.