



# Ceiva LF2003 Internal Plastic Screen Frame Replacement

This is a guide to replace the internal plastic frame surrounding the display.

Written By: Casey Glasgow



---

## INTRODUCTION

Replacing the internal frame on this device is very simple and requires minimal disassembly.

---



### TOOLS:

- [T6 Torx Screwdriver](#) (1)
  - [Plastic Opening Tools \(optional\)](#) (1)
-

## Step 1 — Exterior Frame and Matting



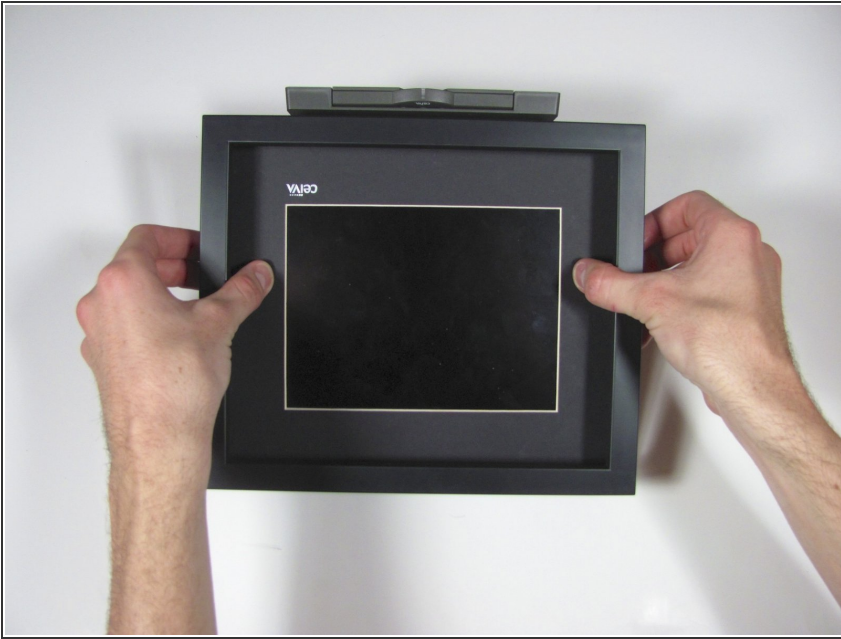
- Lay the device on its back, and rotate so the base is facing away from you.

## Step 2



- Grip the frame with your fingers under the edge of the frame, and thumbs pushing down on the front of the device.

### Step 3



- Lift up the frame with your fingers and push down the rest of the device with your thumbs.

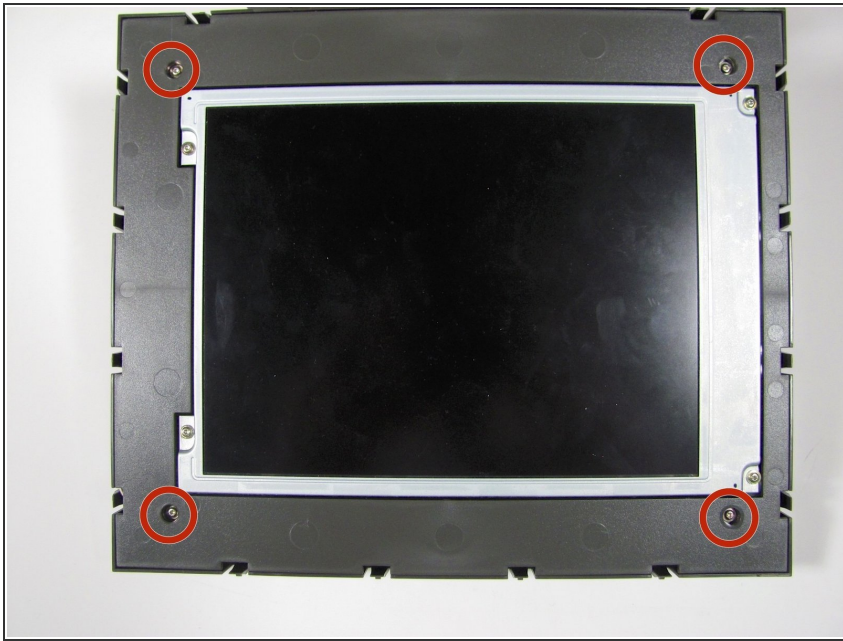
### Step 4



- Remove the frame and matte from the device.

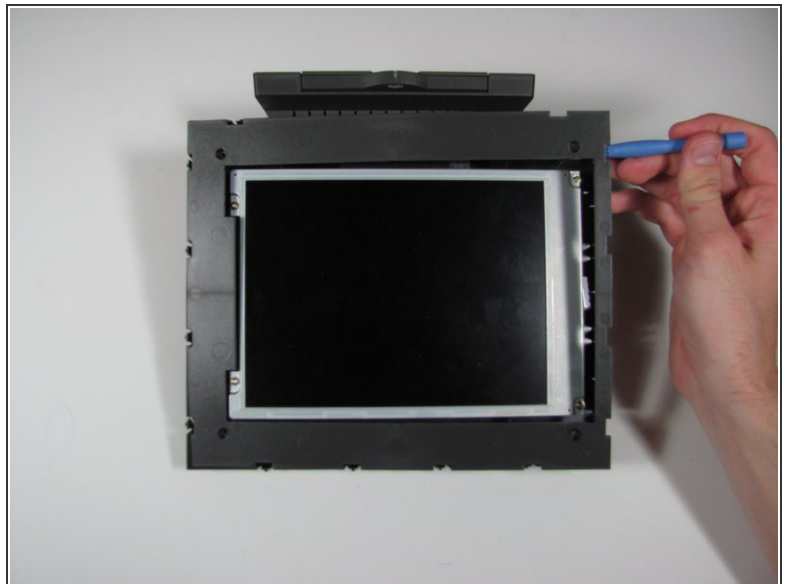
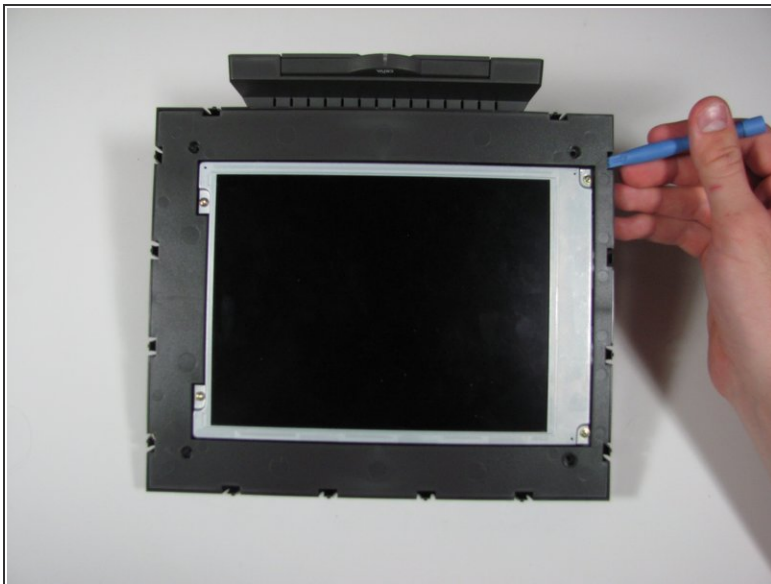


## Step 5 — Internal Plastic Screen Frame



- Remove the four 7mm Torx T6 screws.

## Step 6



- Using the plastic opening tool or your fingers, lift up the frame from any edge.
- Remove the frame from the device.

To reassemble your device, follow these instructions in reverse order.