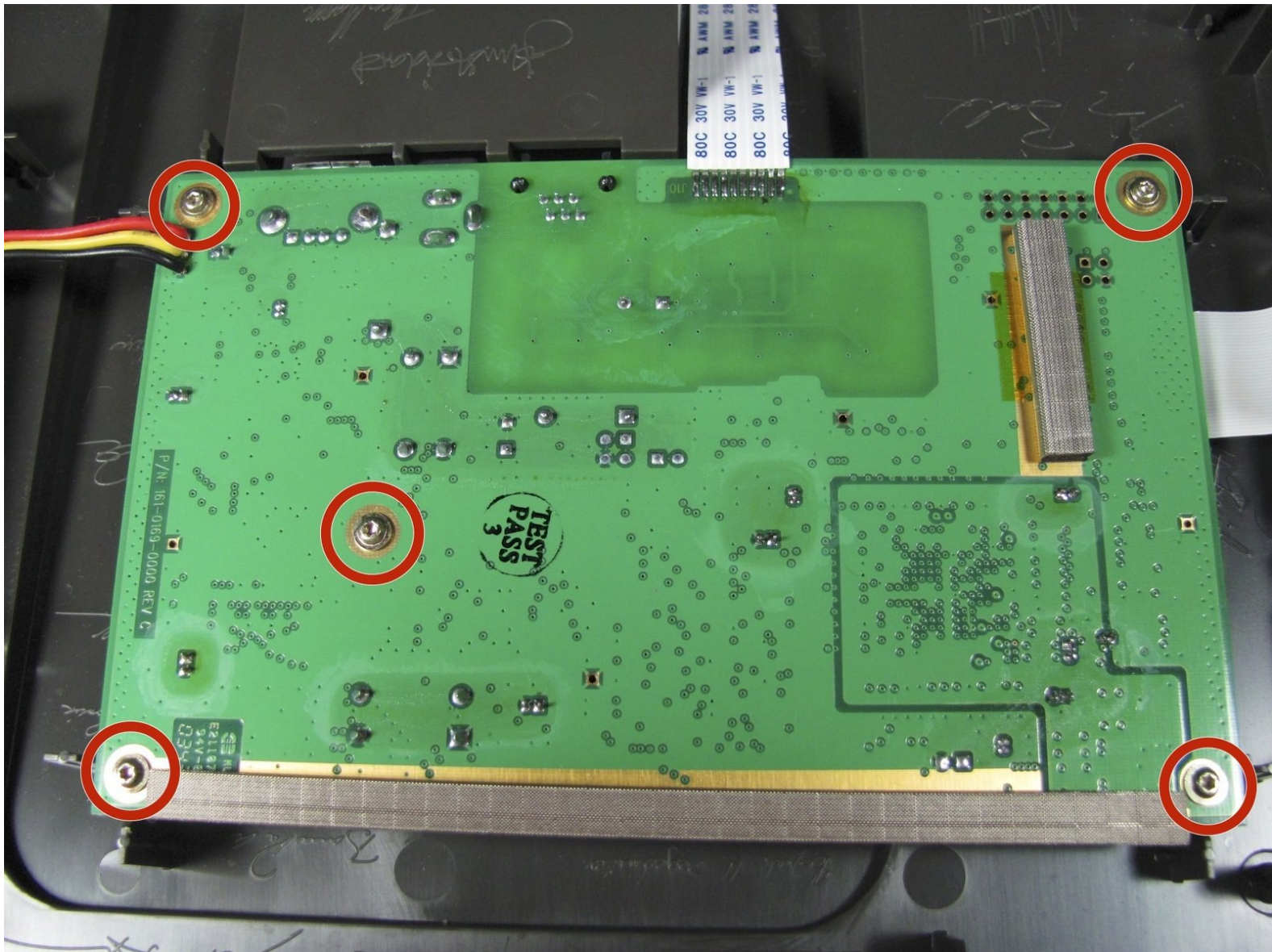




Ceiva LF2003 Main Circuit Board Replacement

Replace the main circuit board of the Ceiva LF2003.

Written By: Casey Glasgow



INTRODUCTION

Use this guide to replace the main circuit board of the device. This requires detaching all other components, including those that are soldered to the board.



TOOLS:

- [iFixit Opening Tools](#) (1)
 - [T6 Torx Screwdriver](#) (1)
 - [Spudger](#) (1)
 - [Soldering Workstation](#) (1)
-

Step 1 — Exterior Frame and Matting



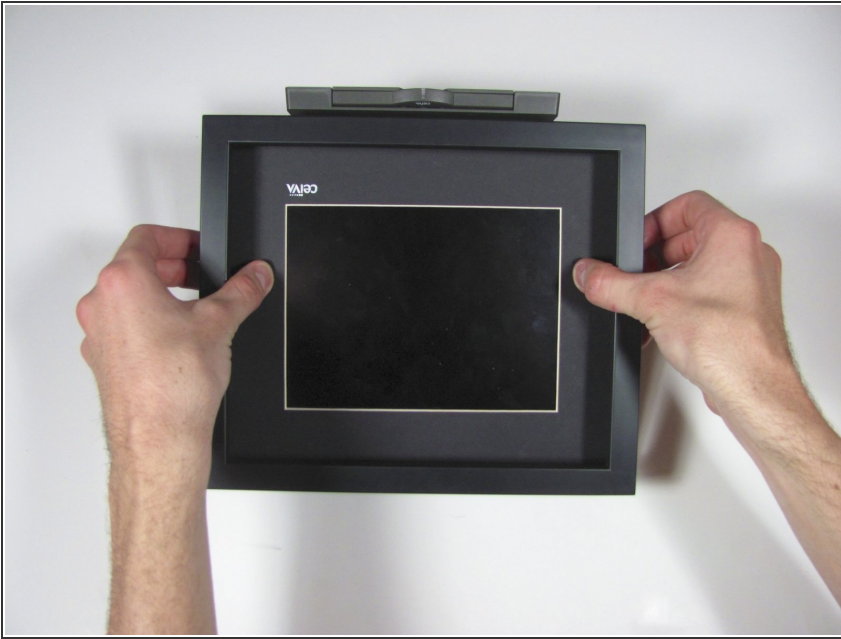
- Lay the device on its back, and rotate so the base is facing away from you.

Step 2



- Grip the frame with your fingers under the edge of the frame, and thumbs pushing down on the front of the device.

Step 3



- Lift up the frame with your fingers and push down the rest of the device with your thumbs.

Step 4



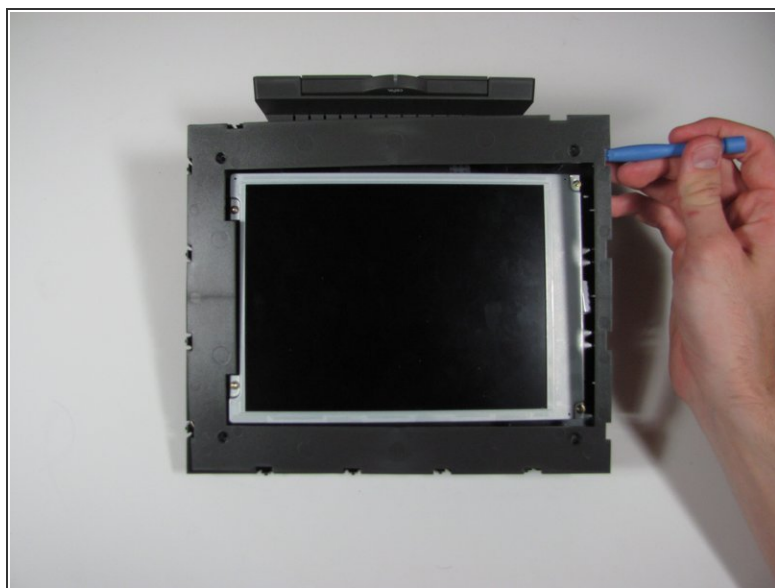
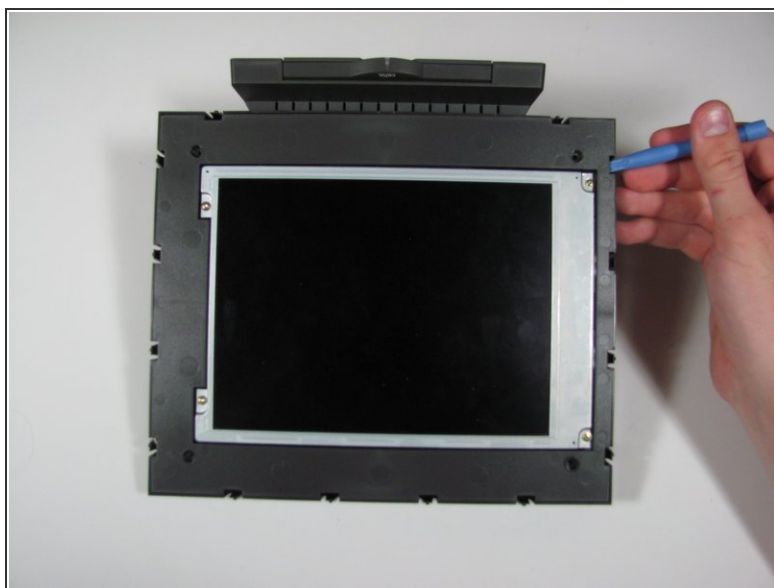
- Remove the frame and matte from the device.

Step 5 — Internal Plastic Screen Frame



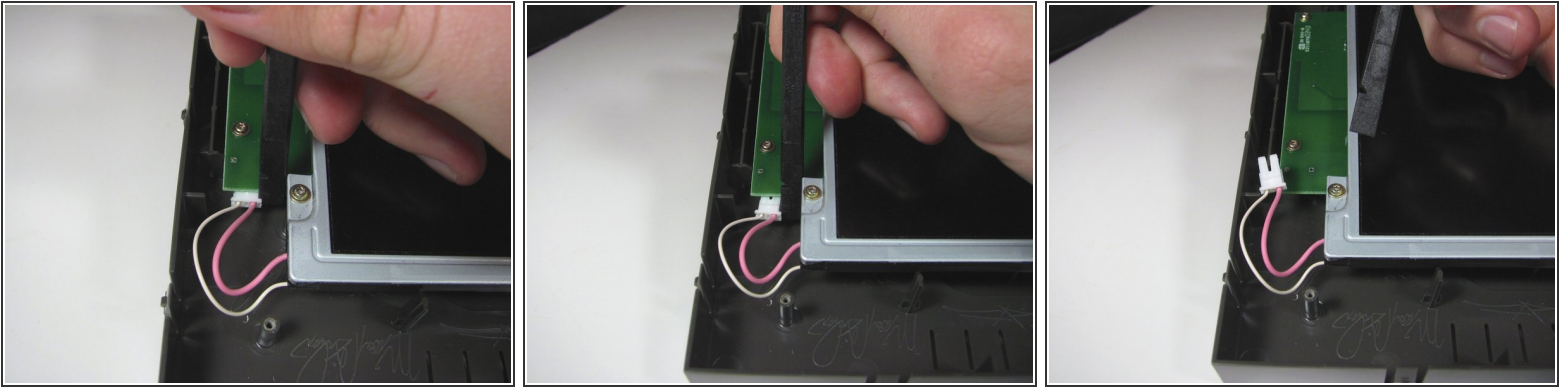
- Remove the four 7mm Torx T6 screws.

Step 6



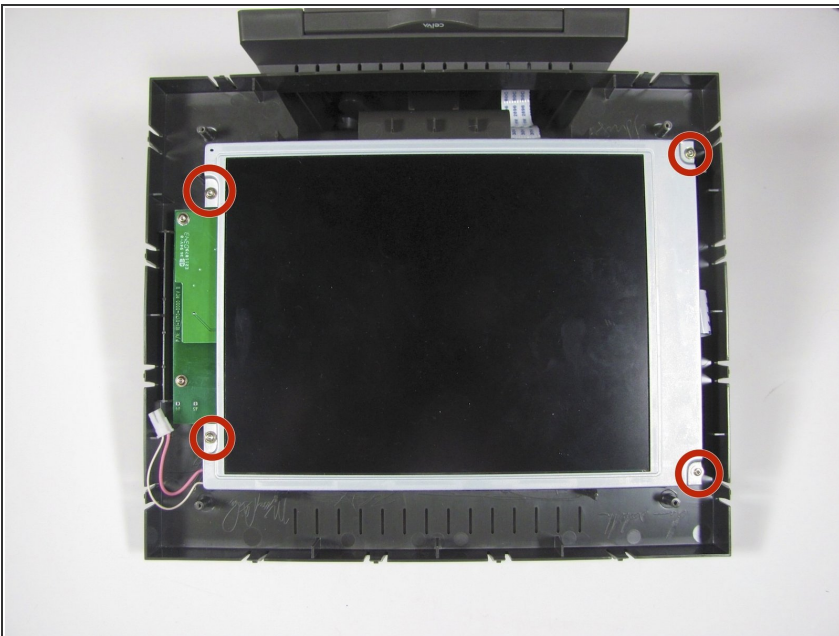
- Using the plastic opening tool or your fingers, lift up the frame from any edge.
- Remove the frame from the device.

Step 7 — Display



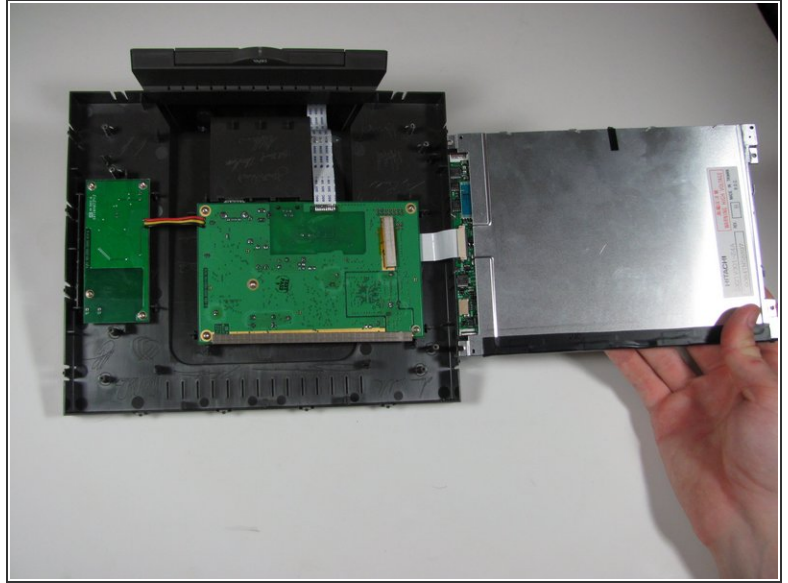
- Unplug the cable connecting the display to the power supply using the flat end of the spudger to pry the connector away from the circuit board.
- ⓘ Alternate applying pressure to the left and right side of the connector to ensure that it does not break.

Step 8



- Remove the four 7mm Torx T6 screws.

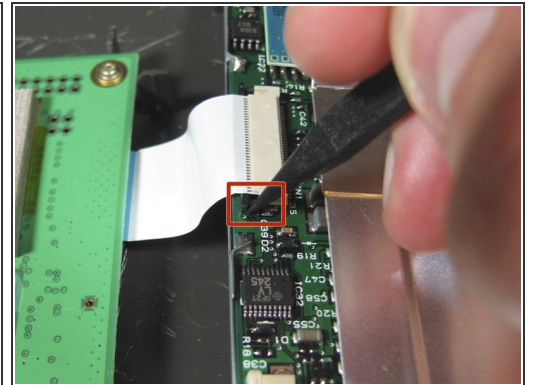
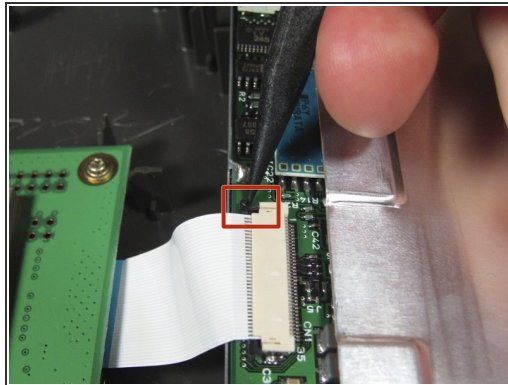
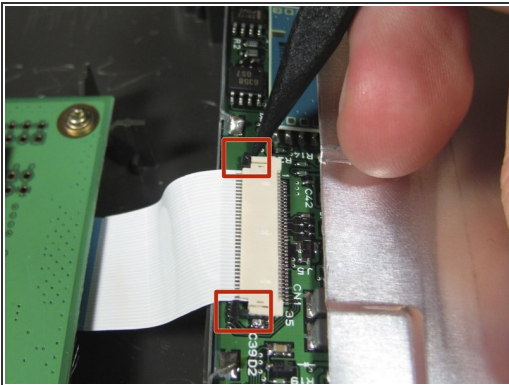
Step 9



- Lift up the display from the left edge and flip display over.

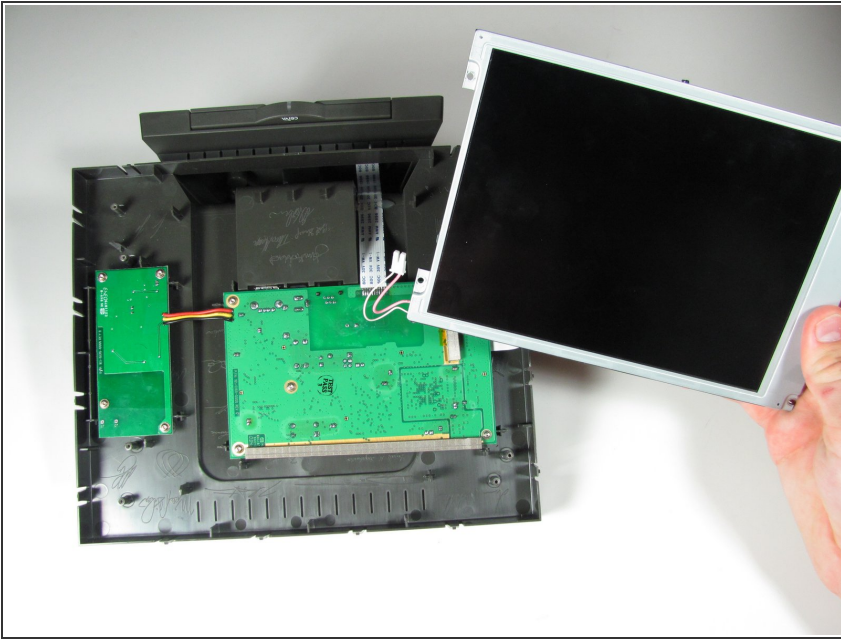
⚠ Do not lift the display too quickly, as the display is still connected to the main circuit board on the right.

Step 10



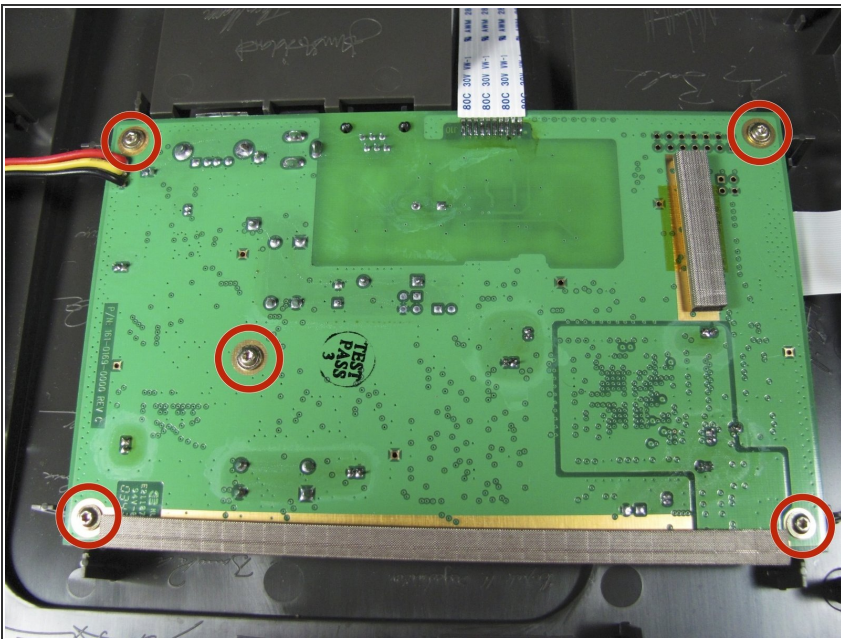
- Use the spudger to disconnect the ribbon cable from the display by the black pins away from the connector. There is a pin on either side of the connector.
- Once both pins are released, the ribbon cable should slide easily out.
- ⓘ It may be easier if someone else holds the display so the cable does not get ripped out.

Step 11



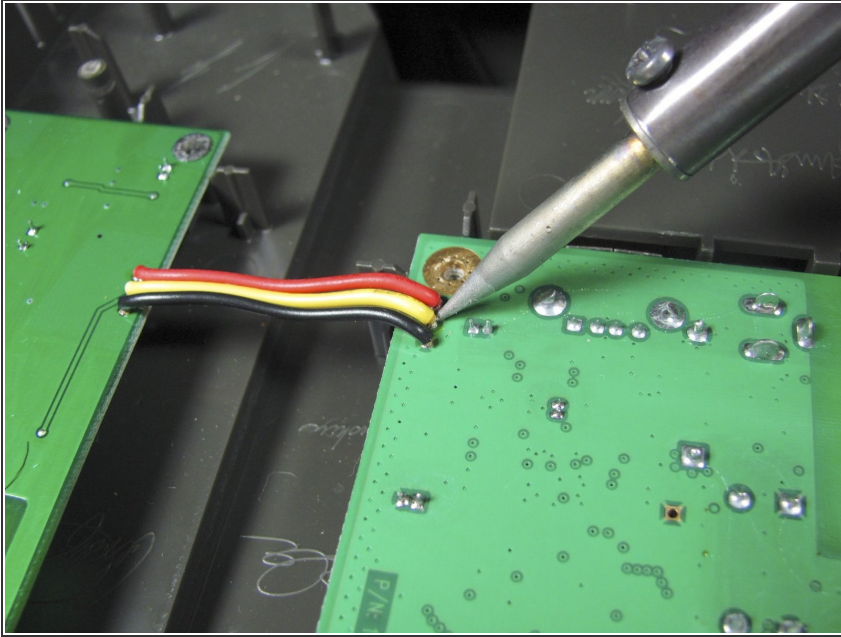
- Remove the display assembly from the device.

Step 12 — Main Circuit Board



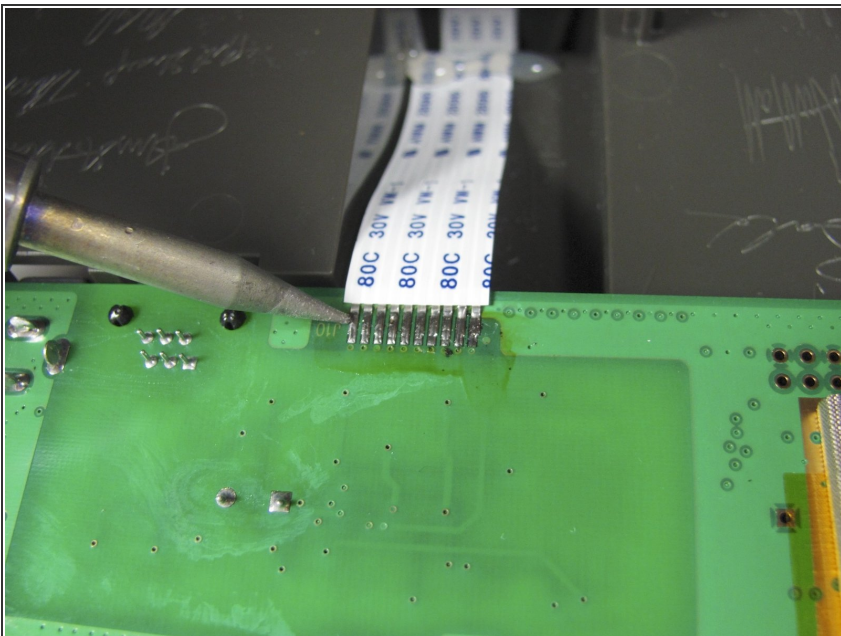
- Remove the five 7mm Torx T6 screws.

Step 13



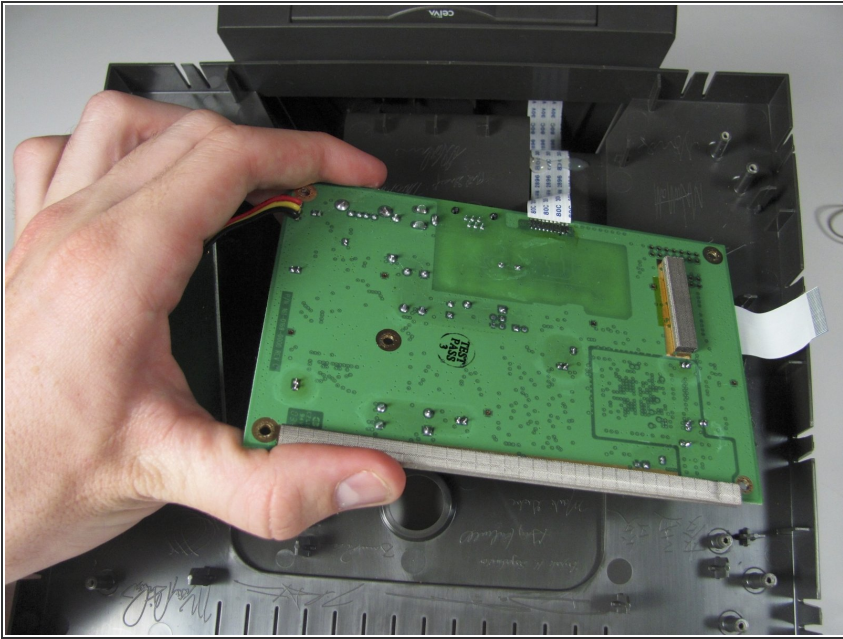
- Desolder the three wires attaching the board to the power supply.
- ⓘ In the pictures, the wires are not actually desoldered.

Step 14



- Desolder all the ribbon cable attachments from the board.
- ⓘ In the pictures, the wires are not actually desoldered.

Step 15



- Remove the circuit board from the device.
- ⓘ The picture shows the board still attached to the wires, but after desoldering, the board will be completely free from the device.

To reassemble your device, follow these instructions in reverse order.