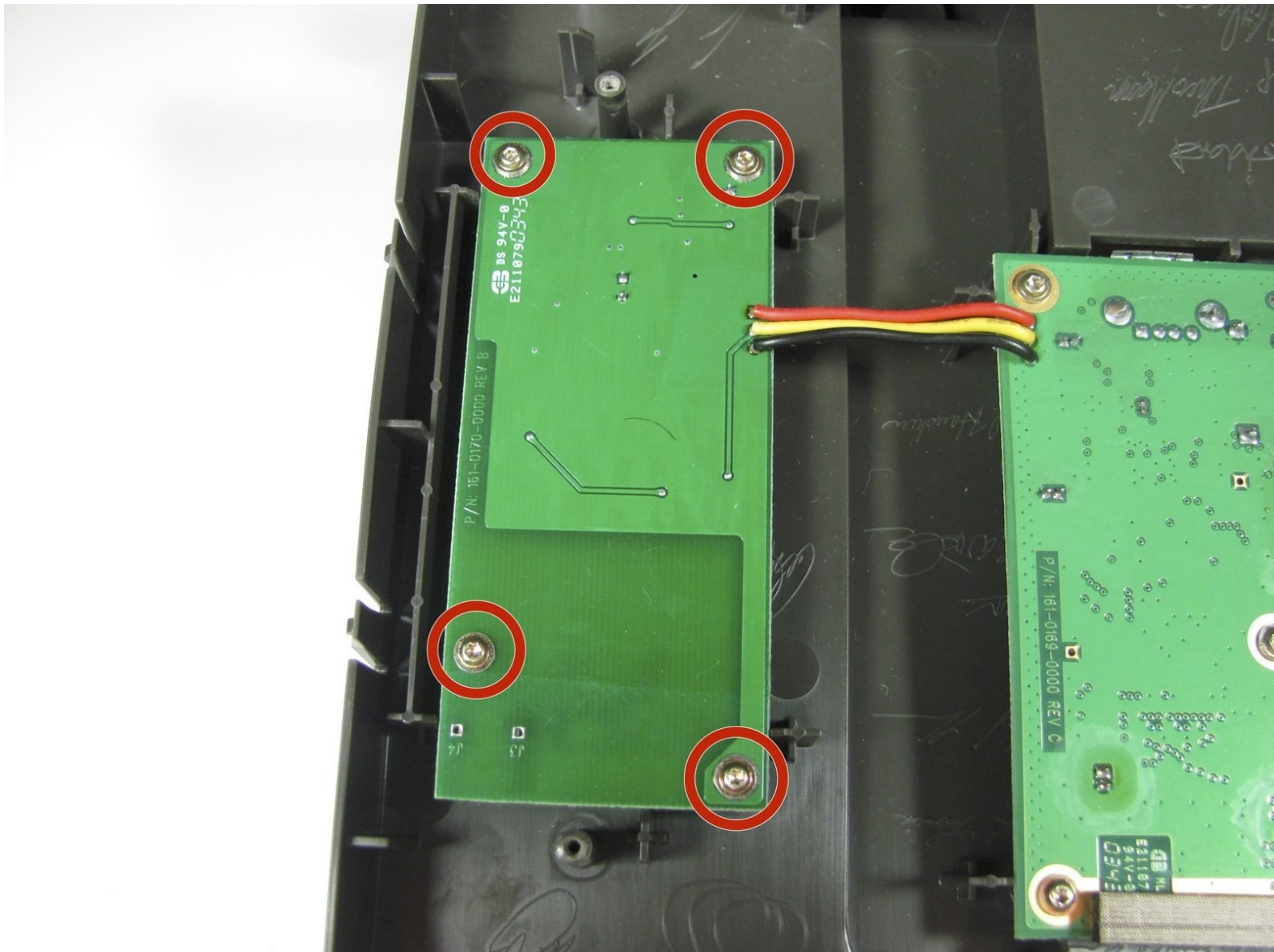




Ceiva LF2003 Power Supply Board Replacement

Replace the power supply board of your Ceiva LF2003.

Written By: Casey Glasgow



INTRODUCTION

Use this guide to replace the power supply board of the device. This includes detaching the power cables connected to the logic board, which requires desoldering.

TOOLS:

- [iFixit Opening Tools](#) (1)
 - [T6 Torx Screwdriver](#) (1)
 - [Spudger](#) (1)
 - [Soldering Workstation](#) (1)
-

Step 1 — Exterior Frame and Matting



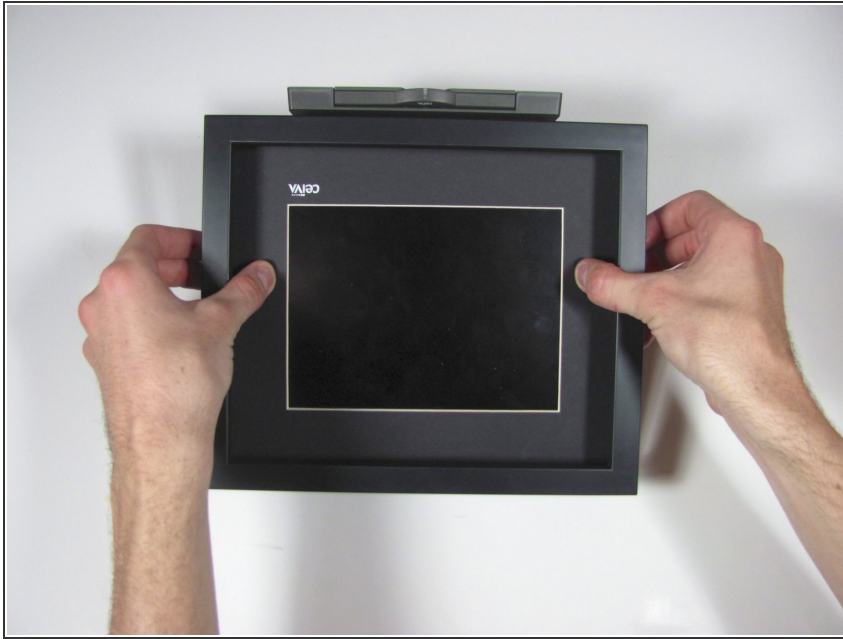
- Lay the device on its back, and rotate so the base is facing away from you.

Step 2



- Grip the frame with your fingers under the edge of the frame, and thumbs pushing down on the front of the device.

Step 3



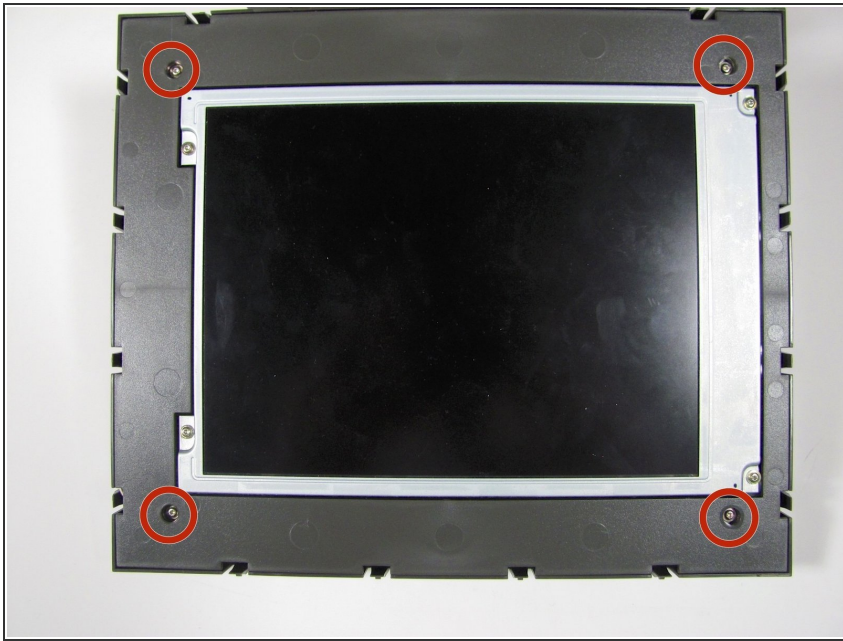
- Lift up the frame with your fingers and push down the rest of the device with your thumbs.

Step 4



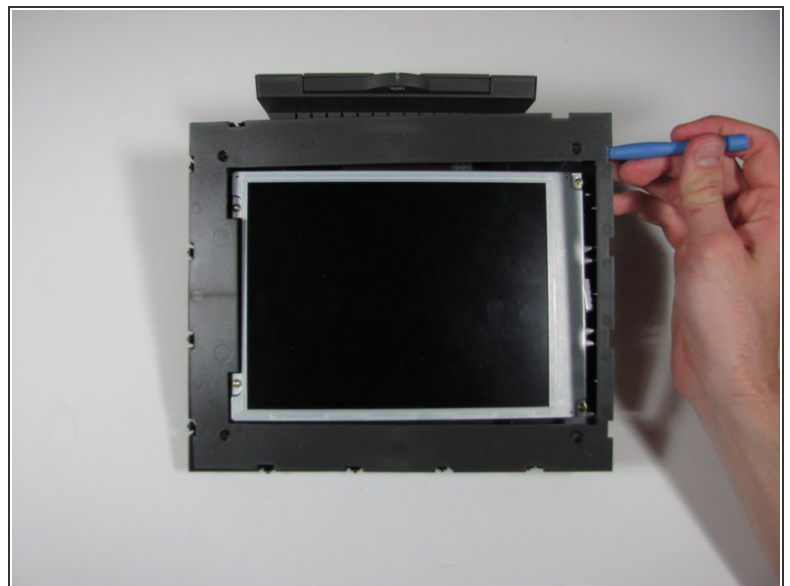
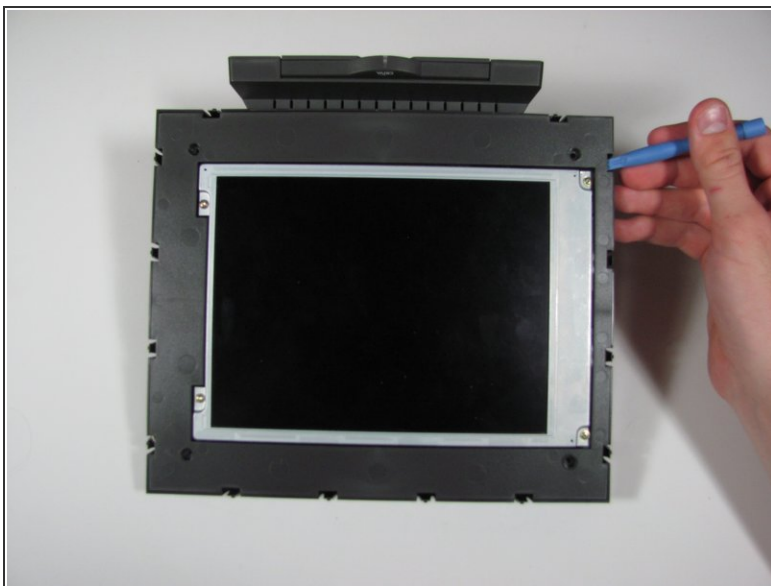
- Remove the frame and matte from the device.

Step 5 — Internal Plastic Screen Frame



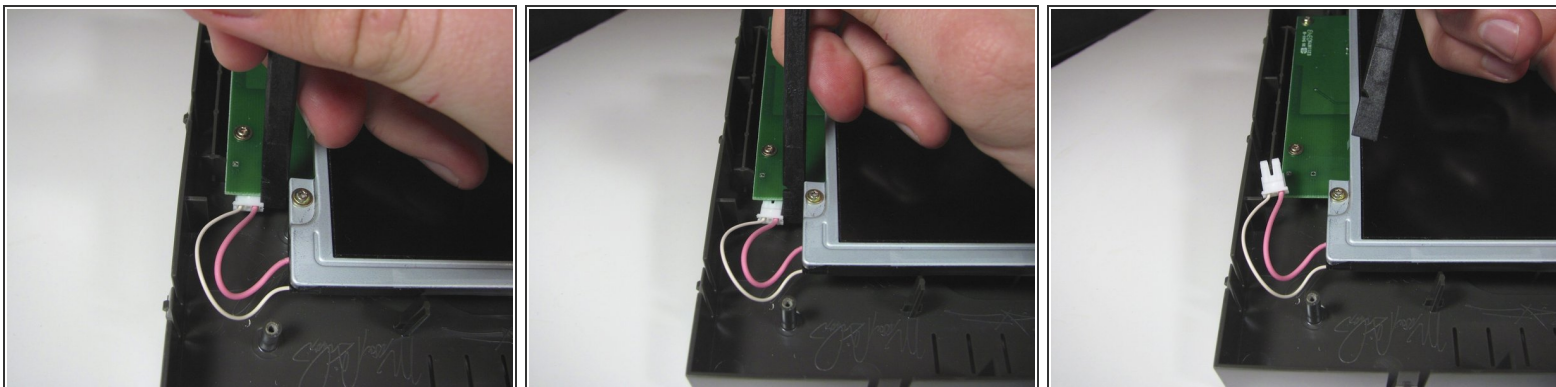
- Remove the four 7mm Torx T6 screws.

Step 6



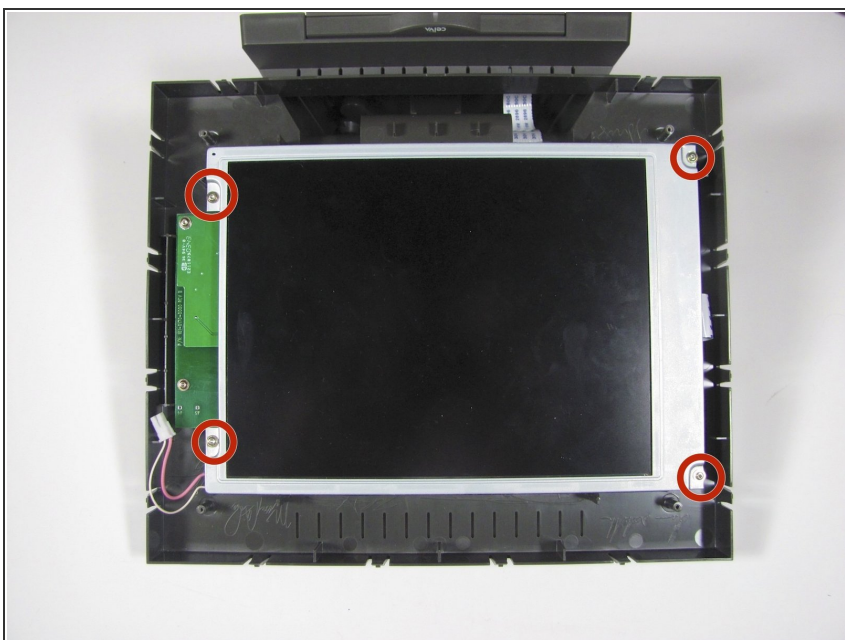
- Using the plastic opening tool or your fingers, lift up the frame from any edge.
- Remove the frame from the device.

Step 7 — Display



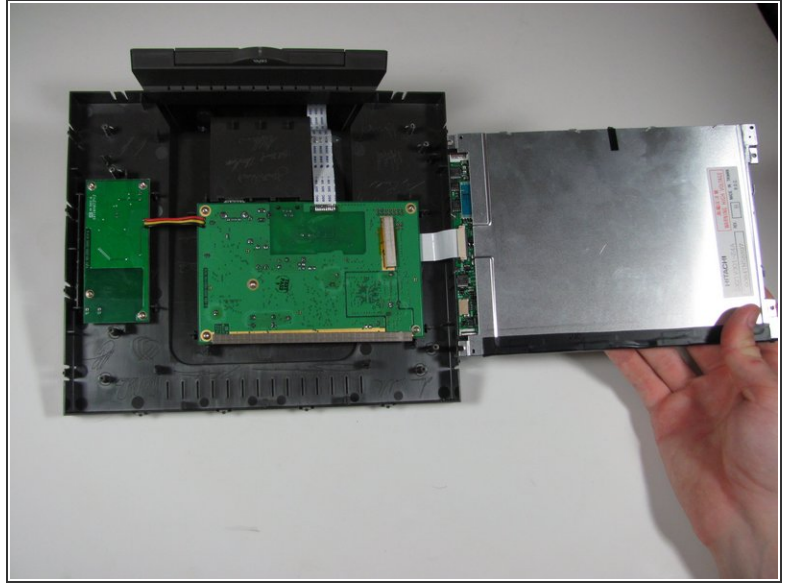
- Unplug the cable connecting the display to the power supply using the flat end of the spudger to pry the connector away from the circuit board.
- ⓘ Alternate applying pressure to the left and right side of the connector to ensure that it does not break.

Step 8



- Remove the four 7mm Torx T6 screws.

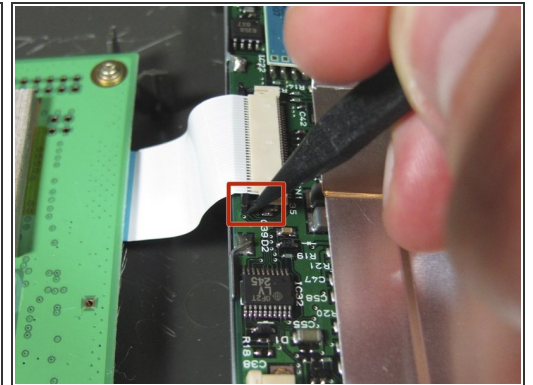
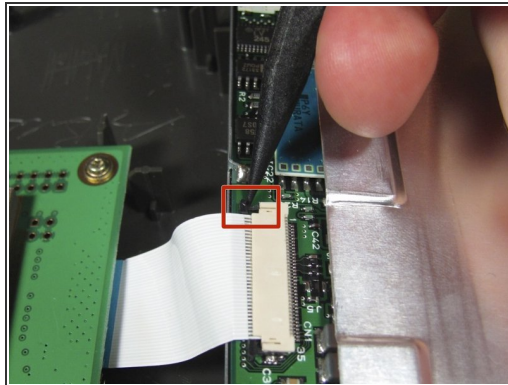
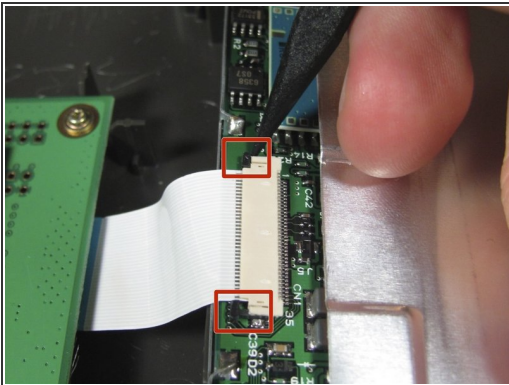
Step 9



- Lift up the display from the left edge and flip display over.

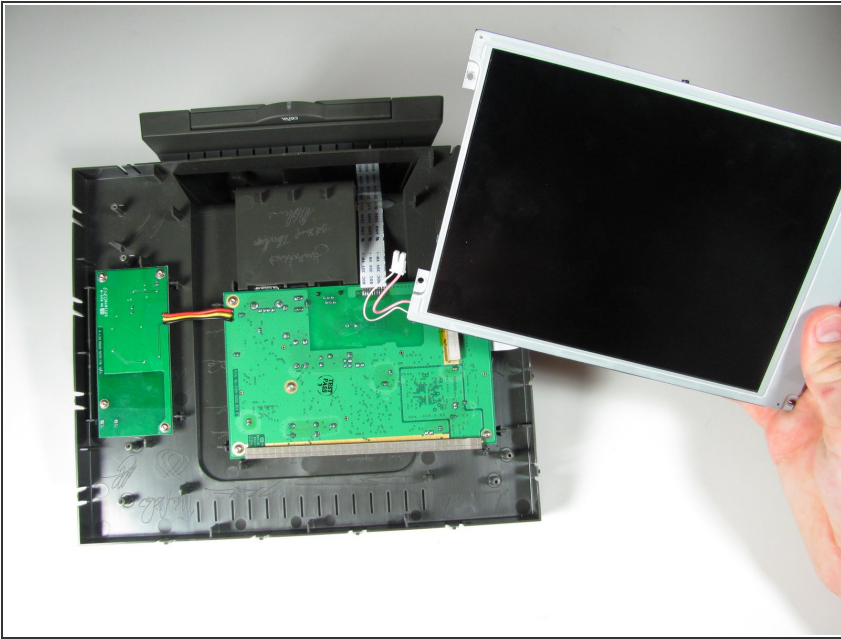
⚠ Do not lift the display too quickly, as the display is still connected to the main circuit board on the right.

Step 10



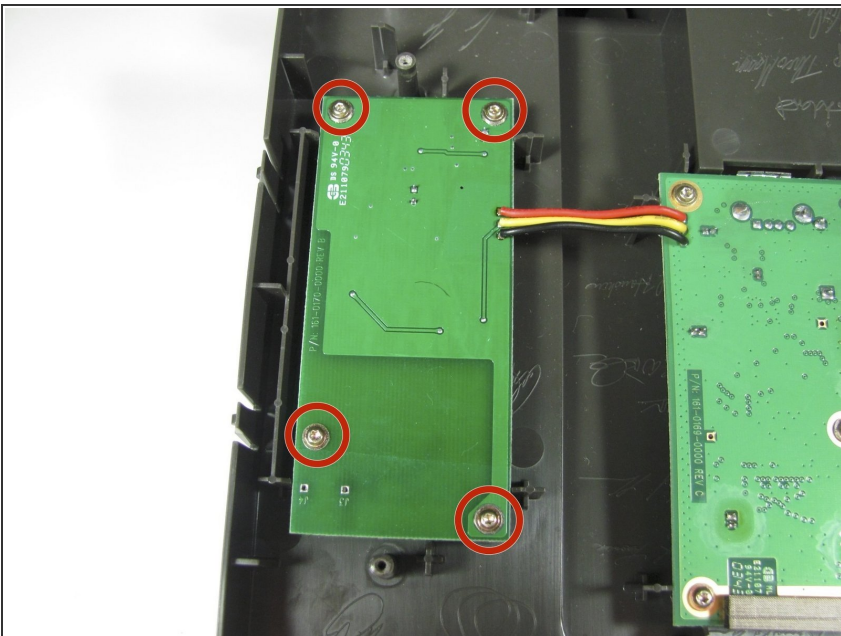
- Use the spudger to disconnect the ribbon cable from the display by the black pins away from the connector. There is a pin on either side of the connector.
 - Once both pins are released, the ribbon cable should slide easily out.
- i* It may be easier if someone else holds the display so the cable does not get ripped out.

Step 11



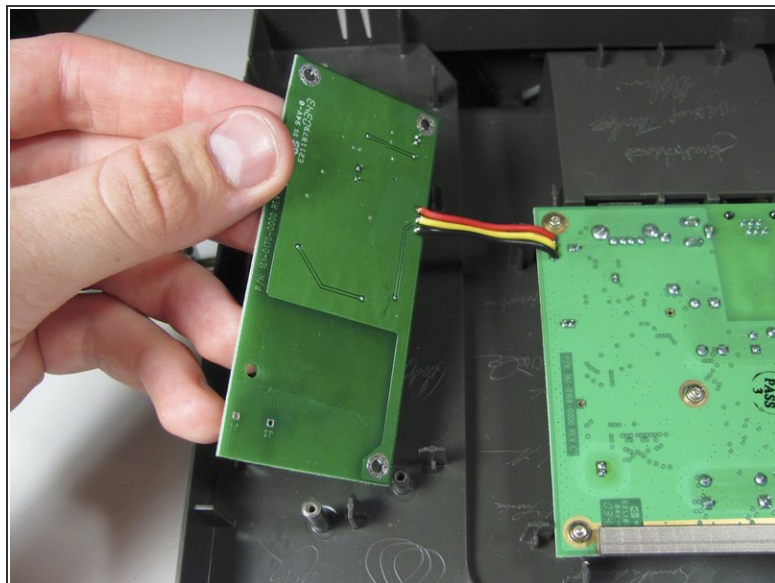
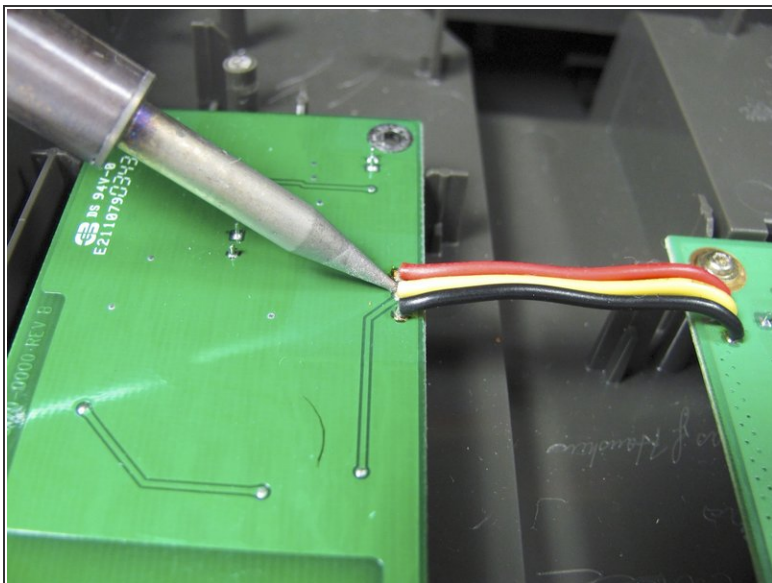
- Remove the display assembly from the device.

Step 12 — Power Supply Board



- Remove the four 7mm Torx T6 screws.

Step 13



- Desolder the 3 wires attached to the board.
- Remove the power supply board from the device.
- ⓘ The wires shown were not actually desoldered, but the board will now be separated from the rest of the device.

To reassemble your device, follow these instructions in reverse order.