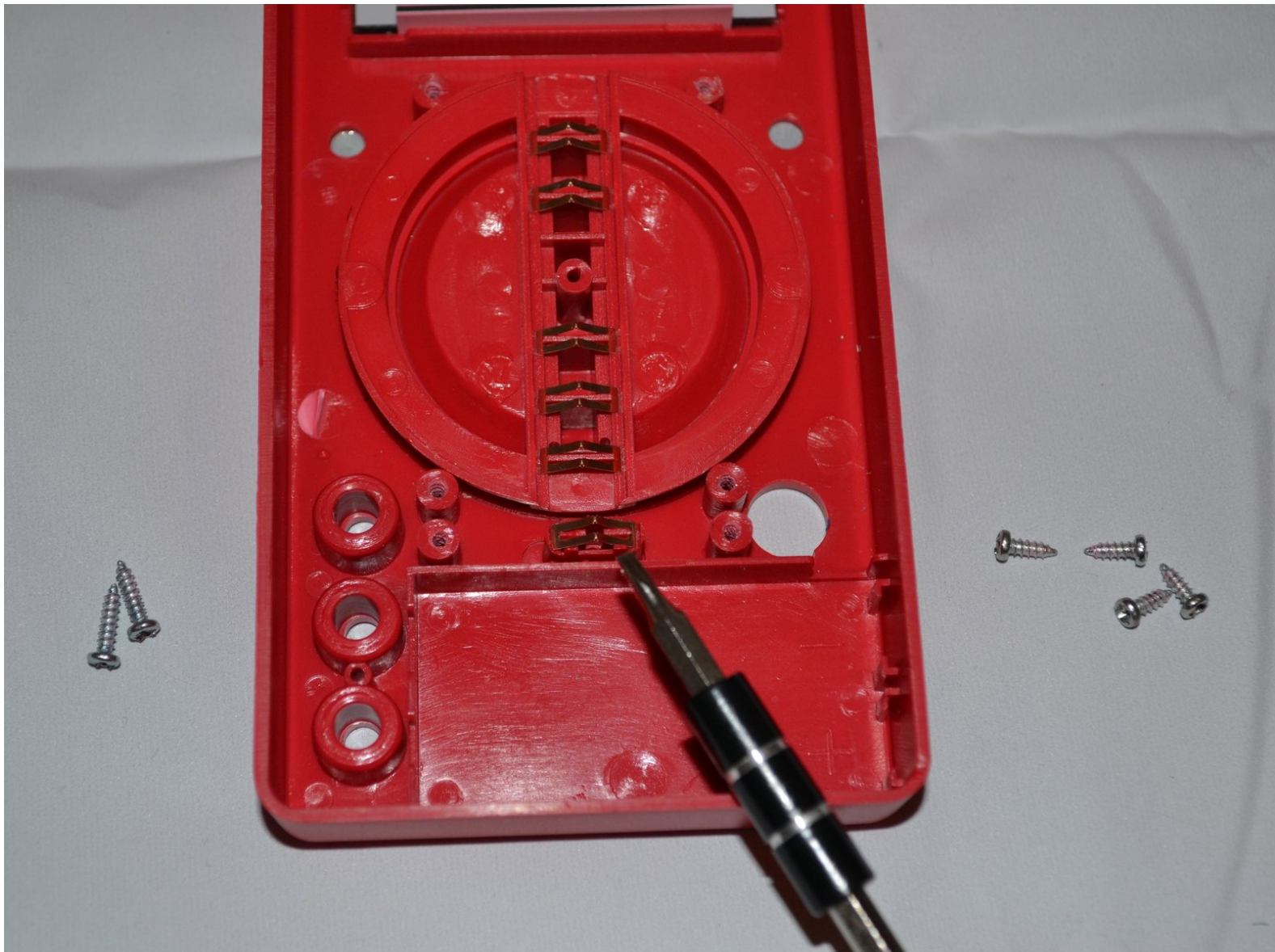




# Cen-Tech Seven Function Digital Multimeter 'On'/'Off' Switch Replacement

This guide will show how to replace the 'on'/'off' switch if it is not functional.

Written By: Rebekah Allison



---

## INTRODUCTION

If the 'on'/'off' switch of the device is stuck in the 'off' position, the device will not turn on. This guide will show how to access and replace the switch from within.



### TOOLS:

- [Phillips #0 Screwdriver](#) (1)
-

## Step 1 — Position Device



- Place the meter face down, and the back panel and screws can be seen.

## Step 2 — Remove Back Panel Screws



- Unscrew the two 9mm screws on the back panel using a #0 Phillips screwdriver.



### Step 3 — Remove Back Panel



- Remove the back panel of the device by lifting upward.
- Remove the battery from the meter before continuing.

### Step 4 — Unscrew Motherboard



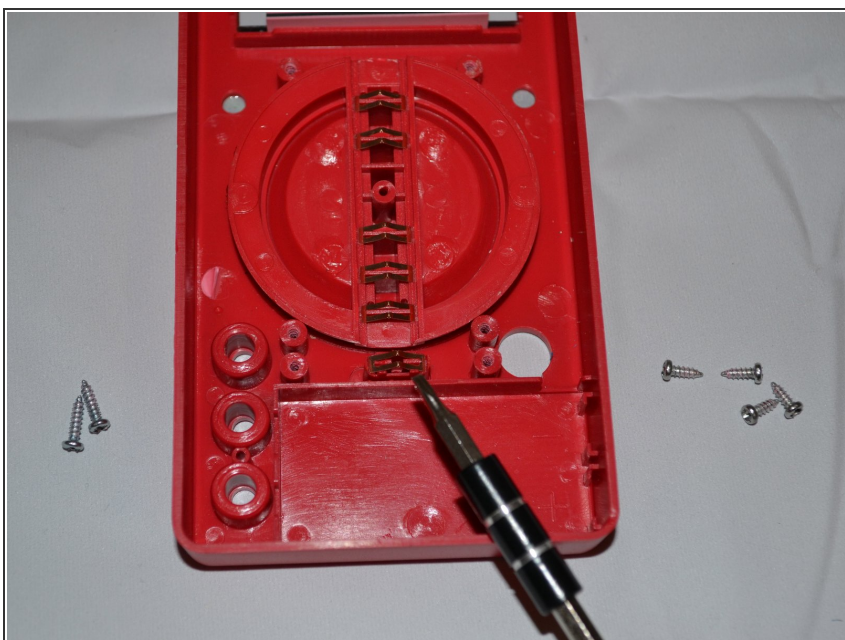
- Remove the four 7mm Phillips screws holding the circuit board in place.

## Step 5 — Remove Motherboard



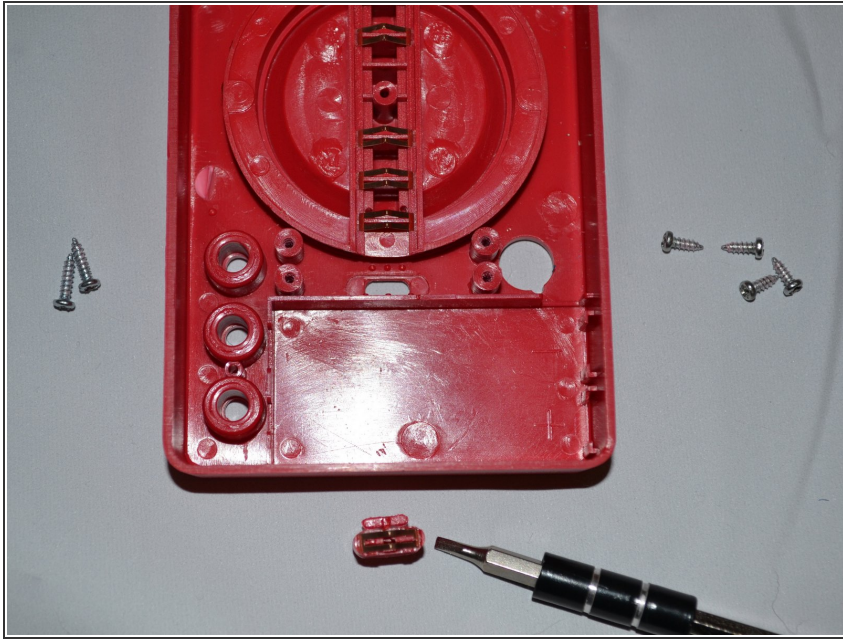
- Gently lift the circuit board away from the device casing.
- ⓘ Remove the battery after removing the back cover to reduce the chances of short-circuiting the circuit board.

## Step 6 — Locate 'On'/'Off' Switch



- The 'on'/'off' switch is located directly beneath the dial.

## Step 7 — Remove 'On'/'Off' Switch



- Gently remove switch from device by lifting upward.
- Either clean or replace switch.

To reassemble your device, follow these instructions in reverse order.