



# Cervantes Touch Light Bq ereader Screen Replacement

Substitution of the Ebook Reader Cervantes touch light screen .

Written By: Jesus Alfonso



## INTRODUCTION

Substitution of a broken Screen model ED060XG1 (LF) T1-11

I've found it for 23€ at <https://es.aliexpress.com/item/Nuevo-E-t...>



### TOOLS:

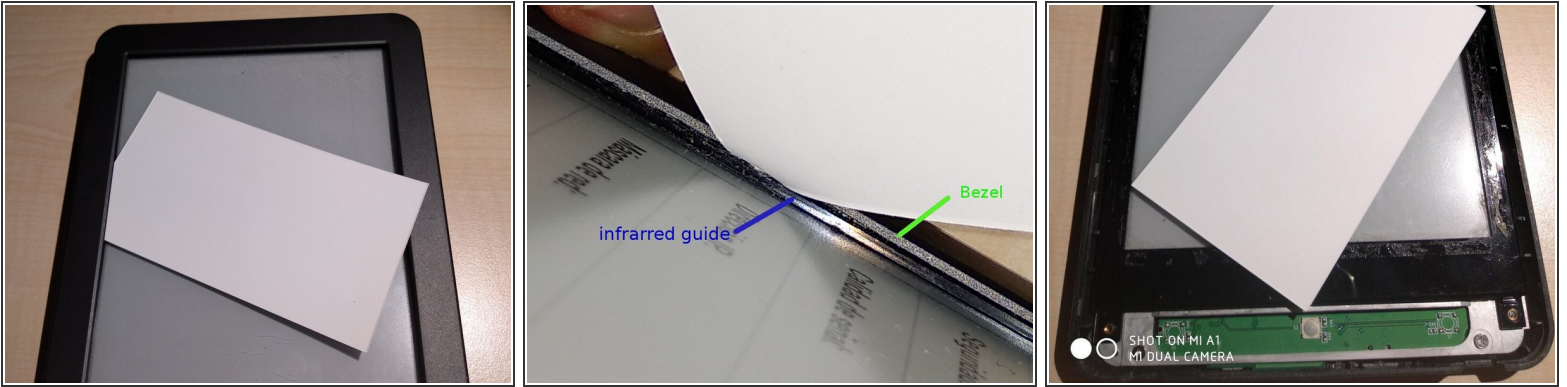
- [Destornillador estrella pequeño](#) (1)
- [New Item](#) (1)
- [Metal Spudger](#) (1)
- [New Item](#) (1)



### PARTS:

- [New screen](https://nl.aliexpress.com/store/product/Original-E-Ink-ED060XG1-LF-T1-11-ED060XG1-T1-11-768-1024-HD-XGA-Pearl-Screen/3523010_32862424281.html?spm=a2g0z.search0104.3.123.2230779amAuiyZ&ws_ab_test=searchweb0_0,searchweb201602_3_10065_5910015_100)  
([https://nl.aliexpress.com/store/product/Original-E-Ink-ED060XG1-LF-T1-11-ED060XG1-T1-11-768-1024-HD-XGA-Pearl-Screen/3523010\\_32862424281.html?spm=a2g0z.search0104.3.123.2230779amAuiyZ&ws\\_ab\\_test=searchweb0\\_0,searchweb201602\\_3\\_10065\\_5910015\\_100](https://nl.aliexpress.com/store/product/Original-E-Ink-ED060XG1-LF-T1-11-ED060XG1-T1-11-768-1024-HD-XGA-Pearl-Screen/3523010_32862424281.html?spm=a2g0z.search0104.3.123.2230779amAuiyZ&ws_ab_test=searchweb0_0,searchweb201602_3_10065_5910015_100)) (1)

## Step 1 — Take off the frame



- This operation has to be made really carefully not to break the infrared guide located underneath the top cover
- The guide is a plastic frame. It's used to direct the IR beams that detect the position of the fingers. If it breaks it's possible that the touch of the display stops working
- The IR guide it's located between the frame and the display and it's glued with double sided tape. View picture
- To detach the frame you have to introduce a thin business card in between really carefully
- Go all around the sides, being extra cautious with the bottom side not to go all the way to the central button

## Step 2 — Take off The Cover



- Take off the cover

### Step 3 — Remove the screws of the bottom cover



- Unscrew the 4 screws shown in the picture

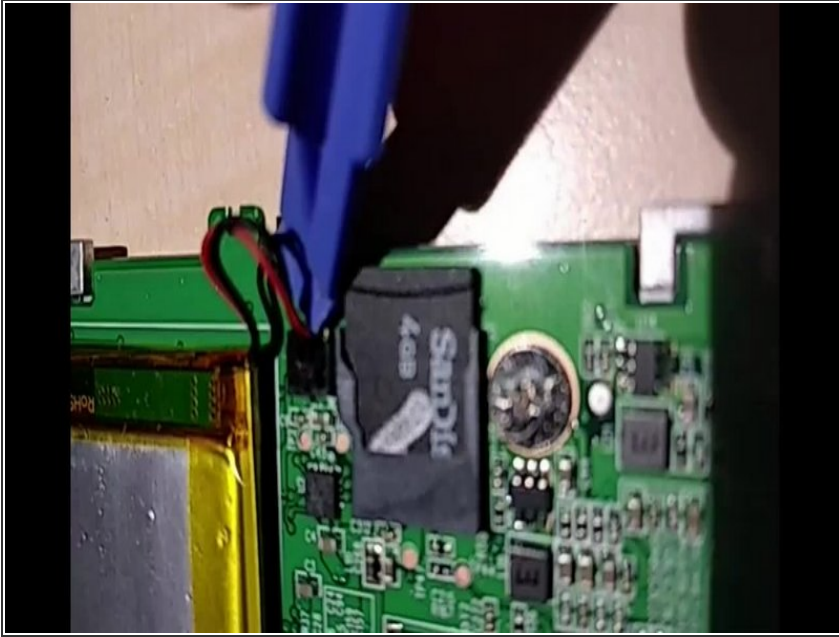
### Step 4 — Detach the IR guide from the screen



- Unscrew the screws shown in the picture
- Slide a business card between the guide and the Screen to separate the double sided tape

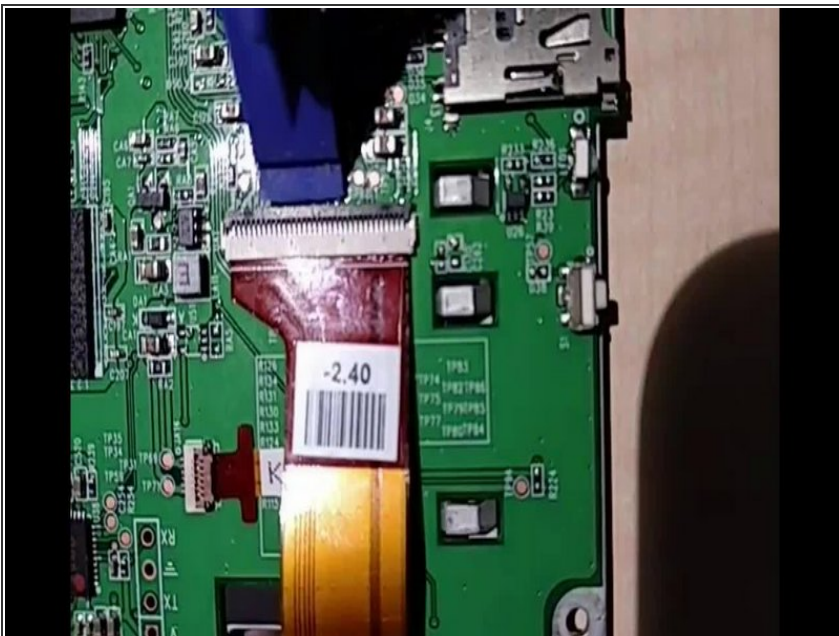


## Step 5 — Disconnect the battery



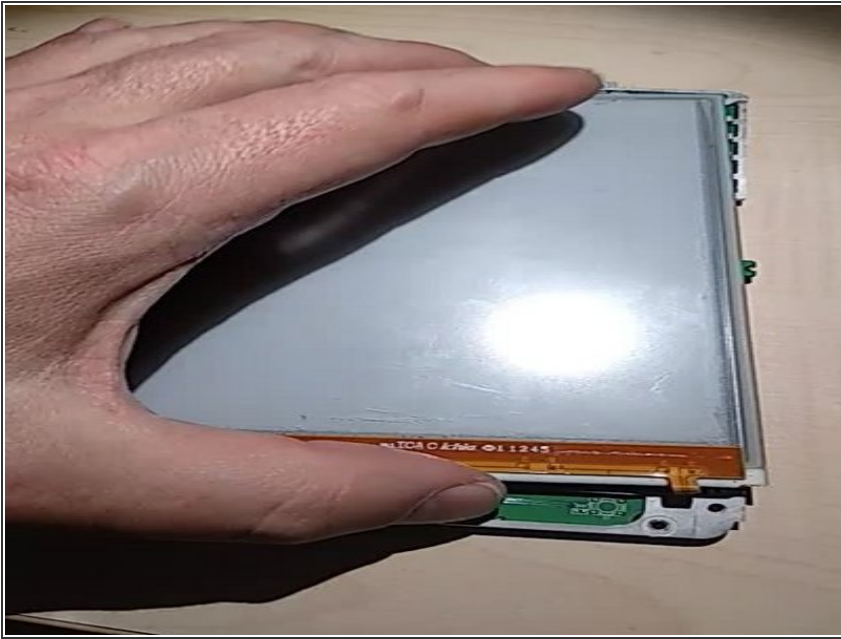
- Disconnect the battery first. You have to push the connector up as shown in the video

## Step 6 — Disconnect the screen



- To loosen the screen, you have to lift the latch of the connectors as shown in the video

## Step 7 — Unstick the screen from the metal plate



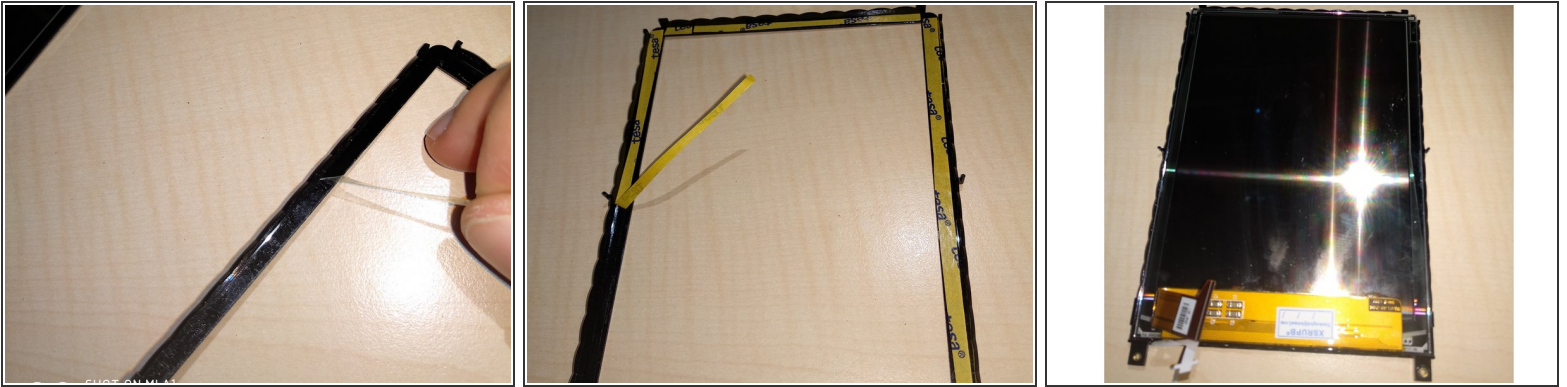
- The screen is glued with double sided tape to the metal plate
- Use the business card bellow the screen to unstick it from the double sided tape

## Step 8 — Everything is disassembled!



- Here you can se, from left to right: Frame, Bottom Cover, IR Guide, Main Board and Screen.

## Step 9 — Stick the IR Guide to the new screen



- It's important to stick the IR Guide to the new Screen before sticking it to the metal plate, the IR guide it's useful to center the screen
- Due to the position of the IR Guide it's critical, I replace the double sided tape that sticks together the screen and the IR Guide for a new strip of double sided tape
- Next, I stick the IR Guide to the screen

To reassemble the device, follow this instructions in the reverse order.