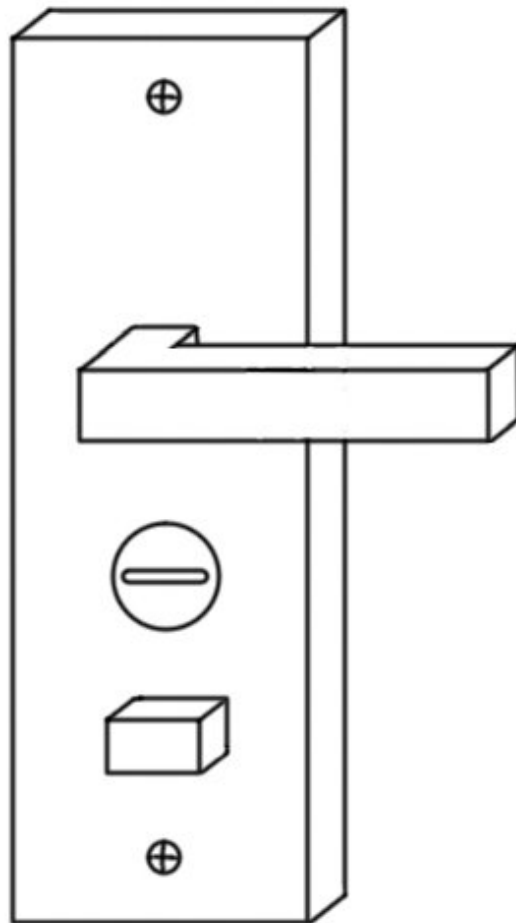




Change the security door cylinder

A few simple replacement home security door cylinder.

Written By: Z.Heng



By Z.Heng

INTRODUCTION

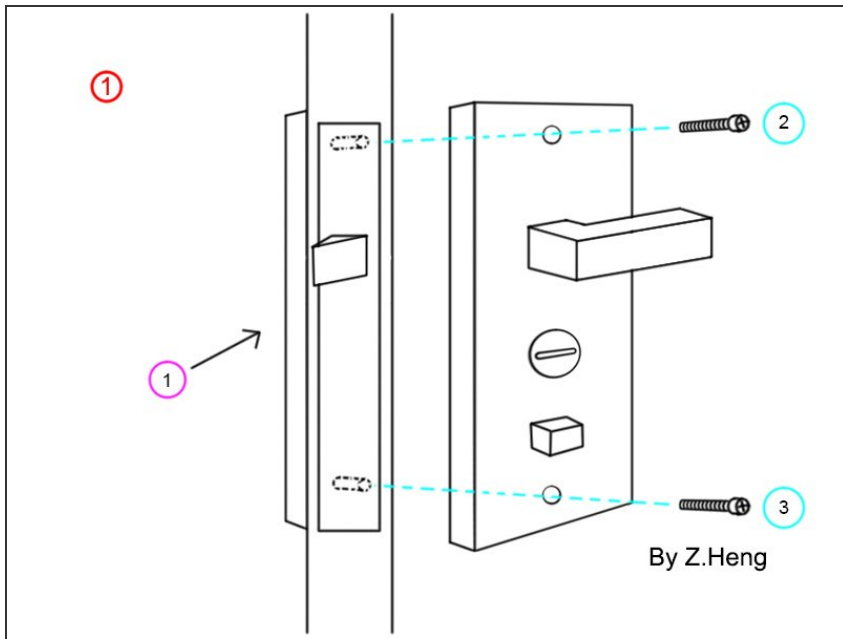
According to this guide can easily replace the home security door cylinder.



TOOLS:

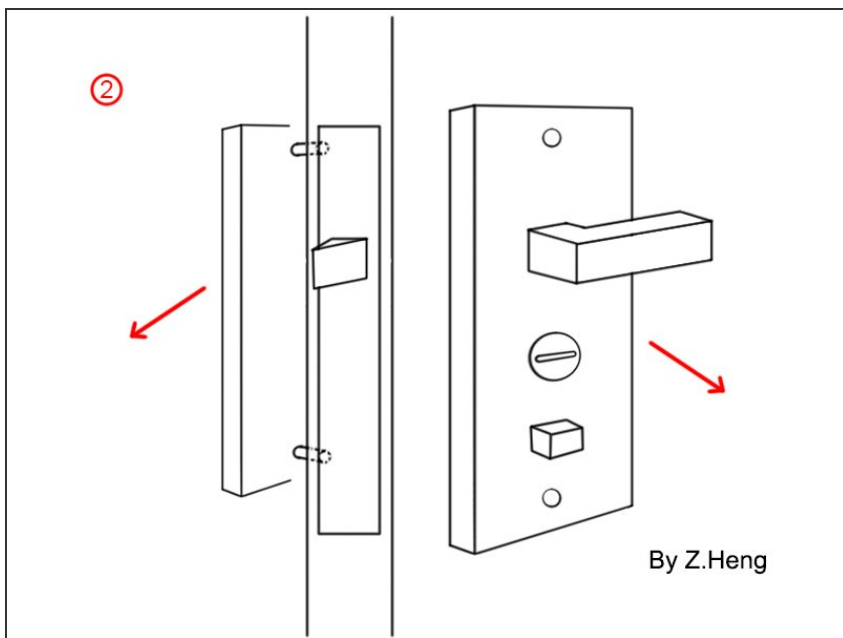
- [New Item](#) (1)
 - [New Item](#) (1)
-

Step 1 — Remove the screw holding the handle



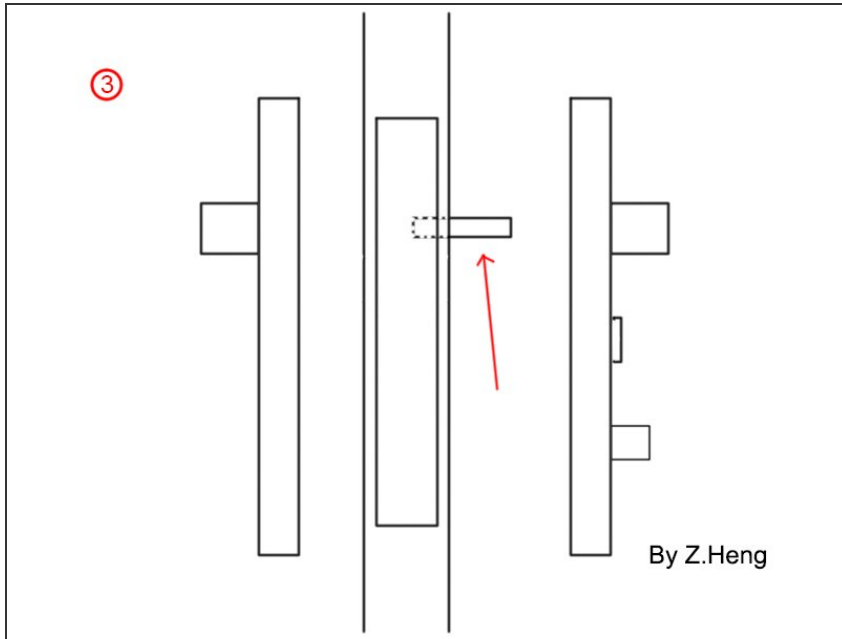
- It is advisable to work with two people, one holding the outer handle on the outside and the other unloading the screw on the other side.
- Remove the two screws.

Step 2 — Remove the handle



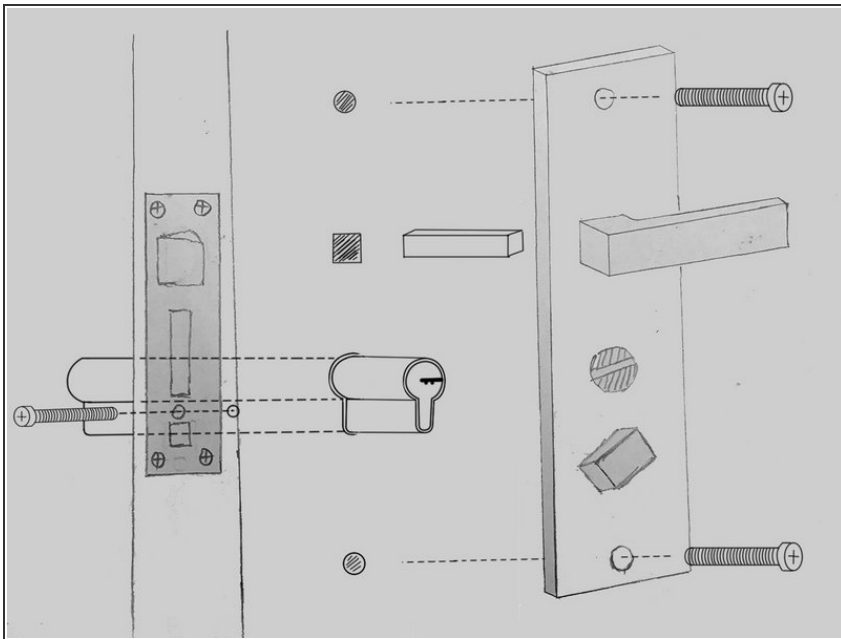
- Use pry bar carefully pry around, you can remove both sides of the door handle.
- ⚠ There is usually a plastic washer between the handle and the door, taking care not to damage it.
- ⚠ There will be a metal square shaft connected between the handle. Be careful not to lose it when removing the inside handle because the shaft is inside and outside.

Step 3 — Pay attention to the square shaft



- !** Pay attention to the installation direction of this square shaft. Do not knock it off when removing the handle.

Step 4 — Remove the lock cylinder



- Remove the lock cylinder lock screw.
- Push the lock cylinder to one side of the door, which side is easy to push.

- !** Note that the lock cylinder has different types and installation directions. If you want to change the lock cylinder, observe your lock cylinder side, there is a black lever, some in the middle of the cylinder, some in the side position.

Please re-install in the reverse order of this guide.