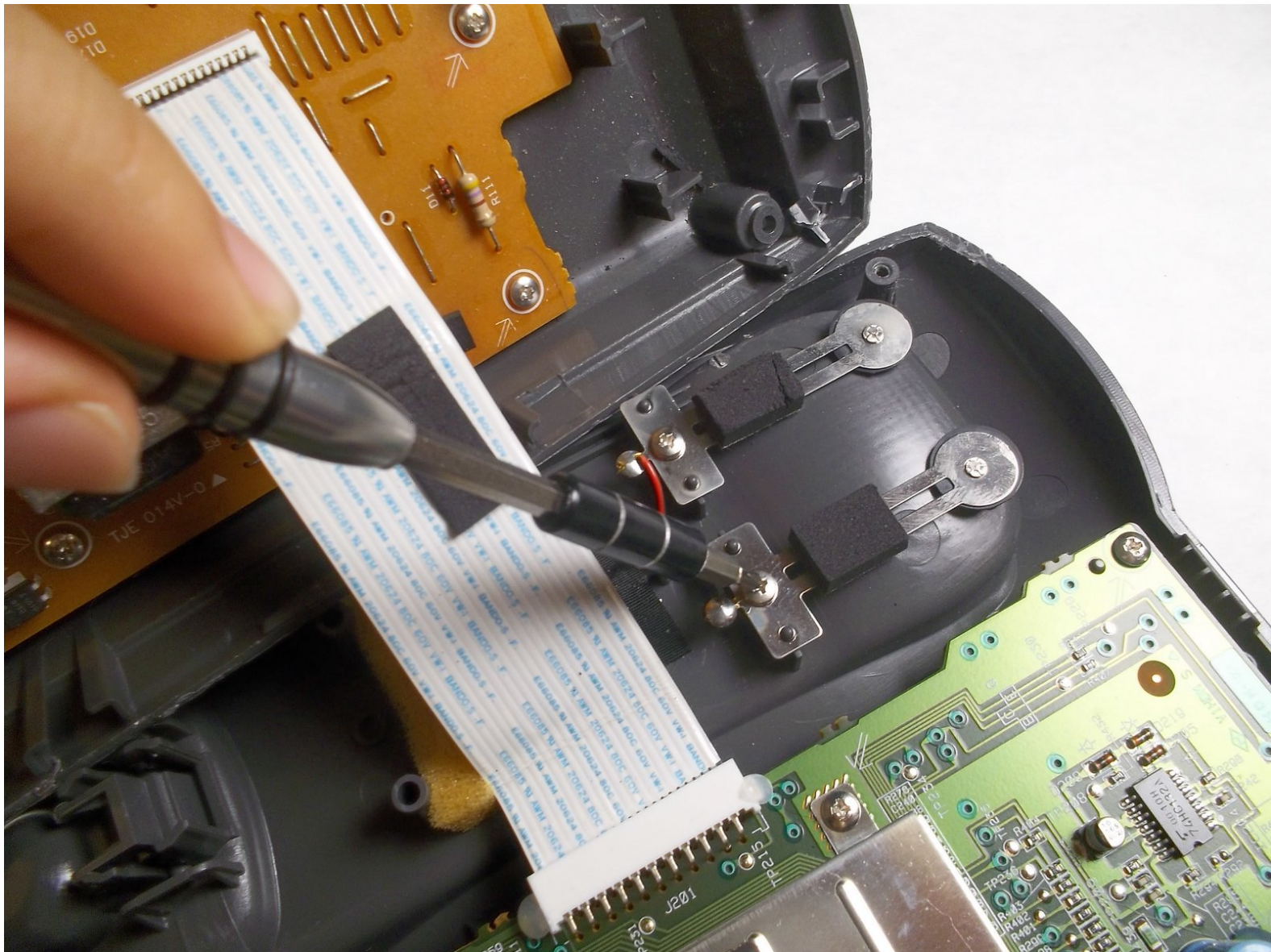




Charging Component on the Base Replacement

This guide will take you through how to replace the charging component on the base.

Written By: Han Shih



INTRODUCTION

Having suspicion that your handset is not charging well due to bad contact? You've come to the right guide!



TOOLS:

- [Spudger](#) (1)
 - [Phillips #0 Screwdriver](#) (1)
 - [Soldering Iron](#) (1)
-

Step 1 — Base



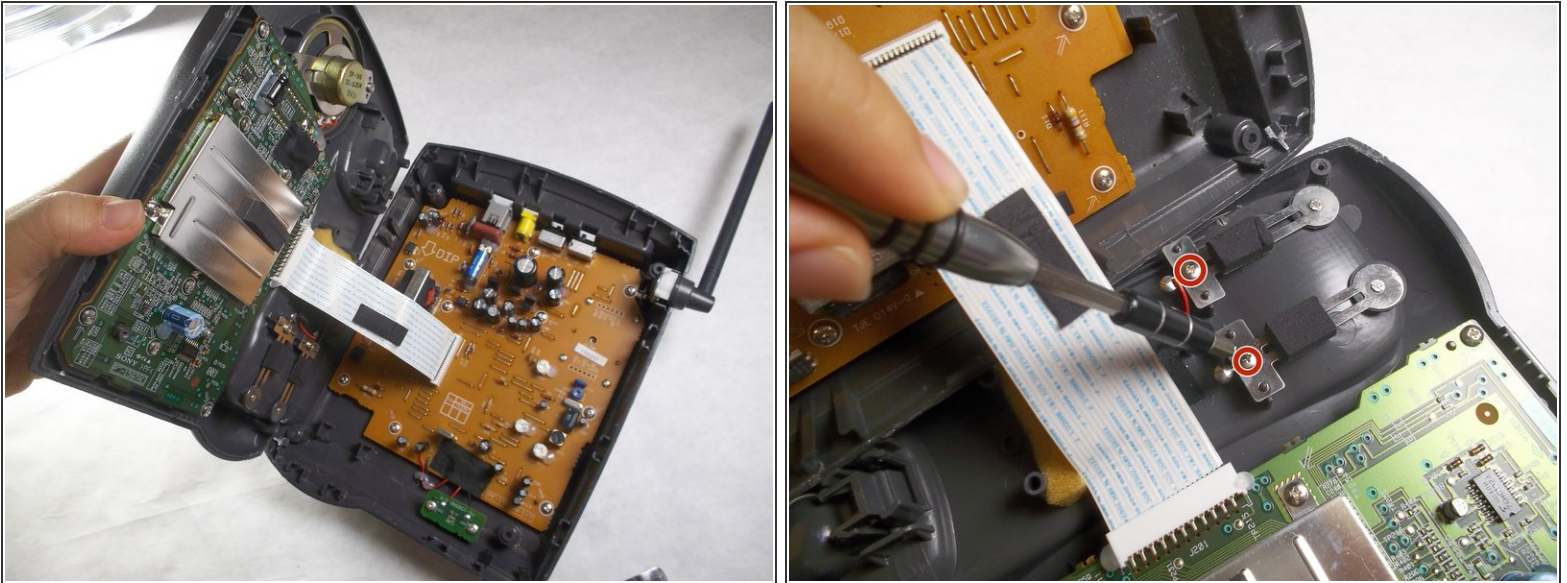
- Turn the base over. You will see four 11mm Phillips #0 screws, one in each corner.
- Use a screwdriver to remove all four 11mm Phillips #0 screws.

Step 2



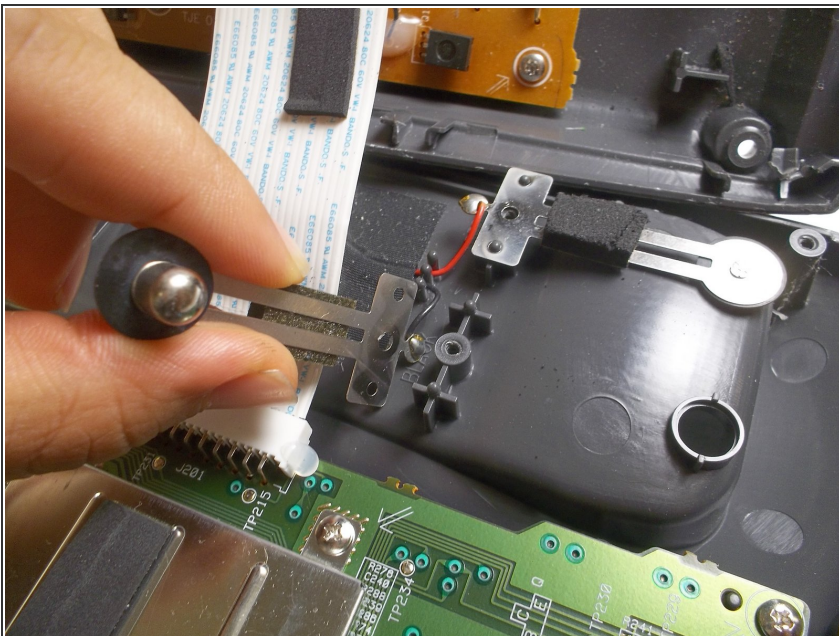
- Locate an easy seam for entry and insert the metal spudger to separate the plastic. Use the spudger in multiple places if necessary.
- ⚠ Opening the base may require exerting significant force as it is bound together tightly. This step can be dangerous.
- ℹ The spudger is designed to make this step easier.

Step 3 — Charging Component on the Base



- Locate the charging component towards the bottom of the grey, plastic, phone-shaped extrusion. It is composed of two metal pieces; each is fastened by a 5mm Phillips #0 screw.
- Remove both 5mm Phillips #0 screws to release the metal pieces.

Step 4



- Cut the black and red wires to finish removal, and then solder your new replacement component.
- For more help on soldering, please refer to the [iFixit Solder and Desolder Guide](#).

To reassemble your device, follow these instructions in reverse order.