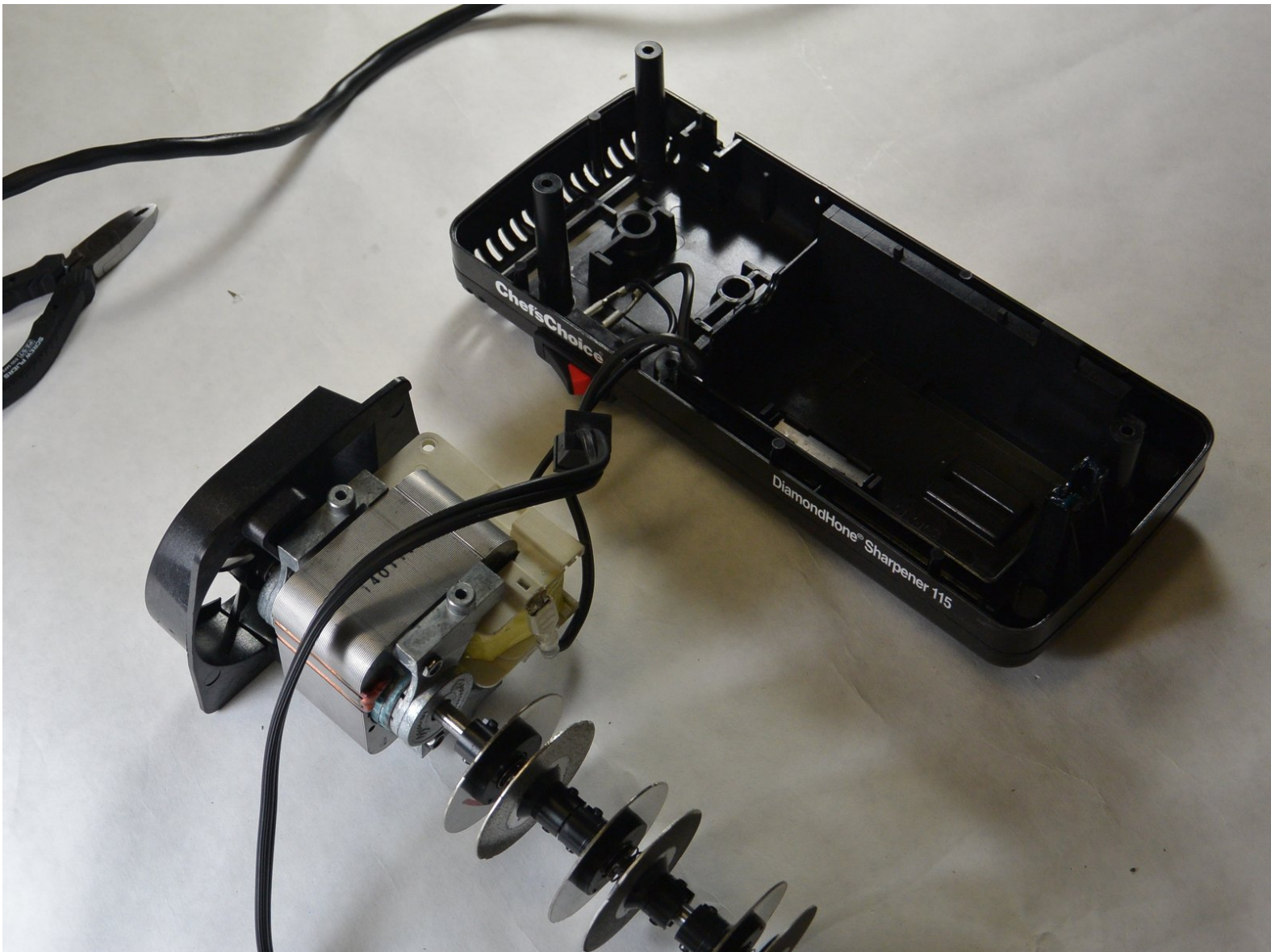




Chef's Choice M115 Motor Assembly Replacement

As a last resort, sometimes the motor assembly will need to be replaced. Due to the design of the assembly, it is not possible to replace just one part.

Written By: Zachary Grounds



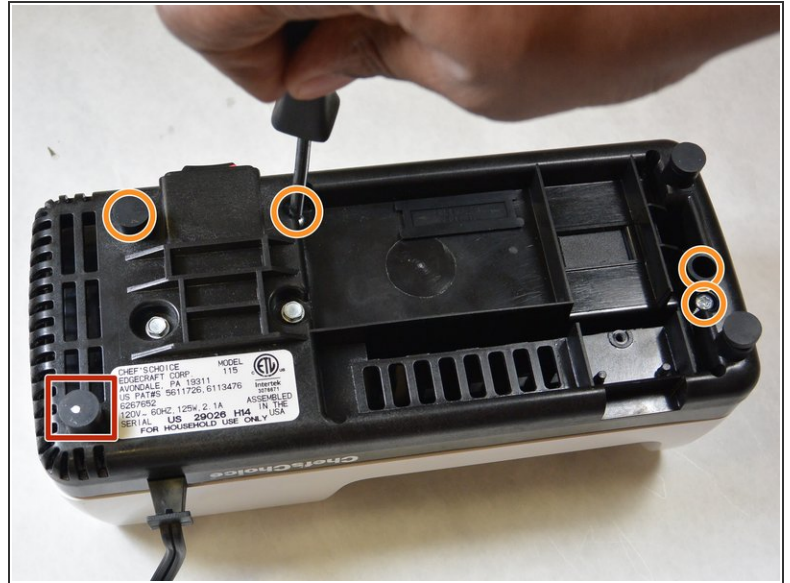
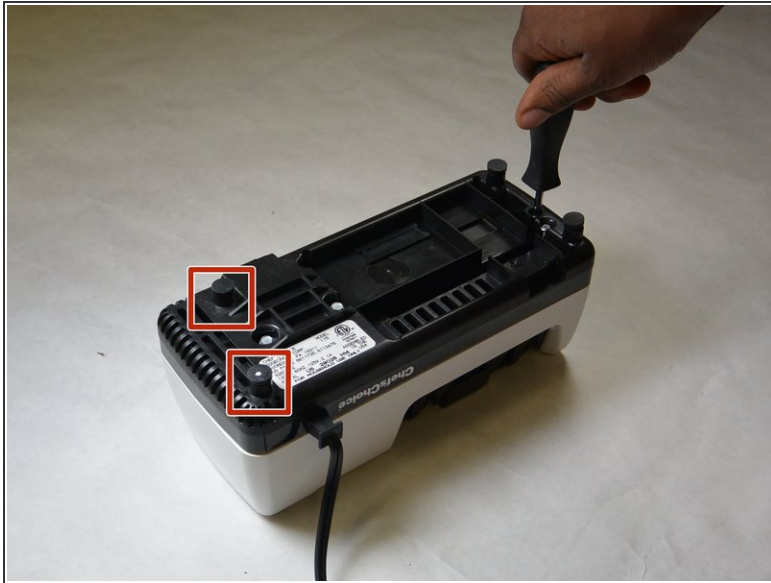
INTRODUCTION

This guide is to demonstrate how to replace the motor assembly of the Chef's Choice M115. Because of the design, the entire assembly must be replaced if the motor malfunctions or burns out.

TOOLS:

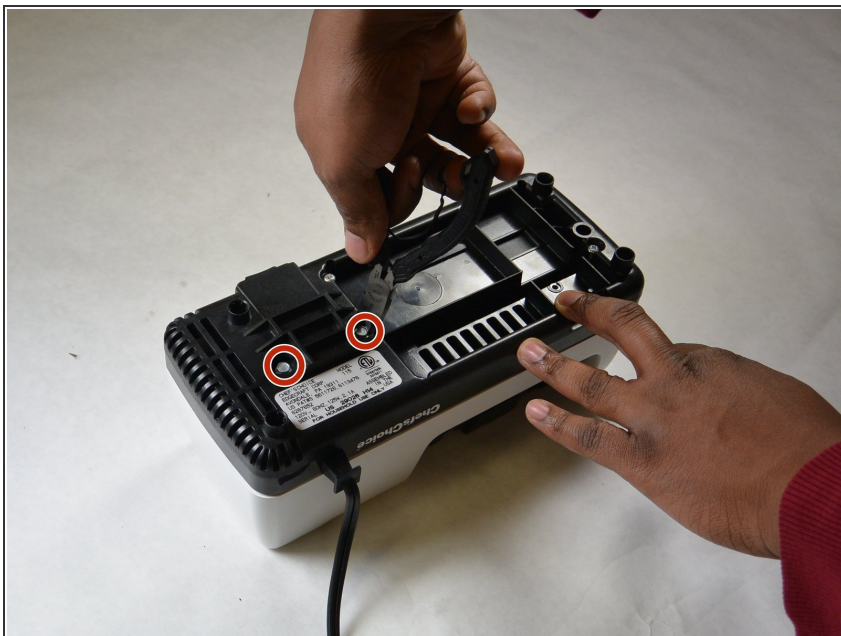
- [Slip Joint Pliers](#) (1)
 - [Phillips #2 Screwdriver](#) (1)
 - [Magnetic Project Mat](#) (1)
-

Step 1 — Case



- Remove the two rubber feet on the motor side of the device.
- Remove the five Phillips screws from the bottom of the case.
- ⓘ These screws are recessed deep in the device, so a long, thin screwdriver is required.

Step 2



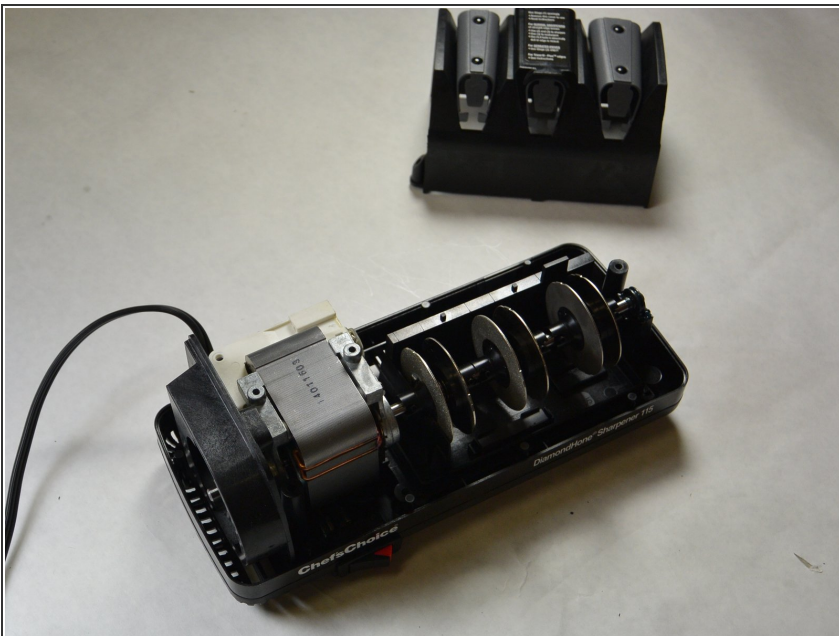
- Remove the two hex-cap screws on the bottom using a pair of pliers.

Step 3



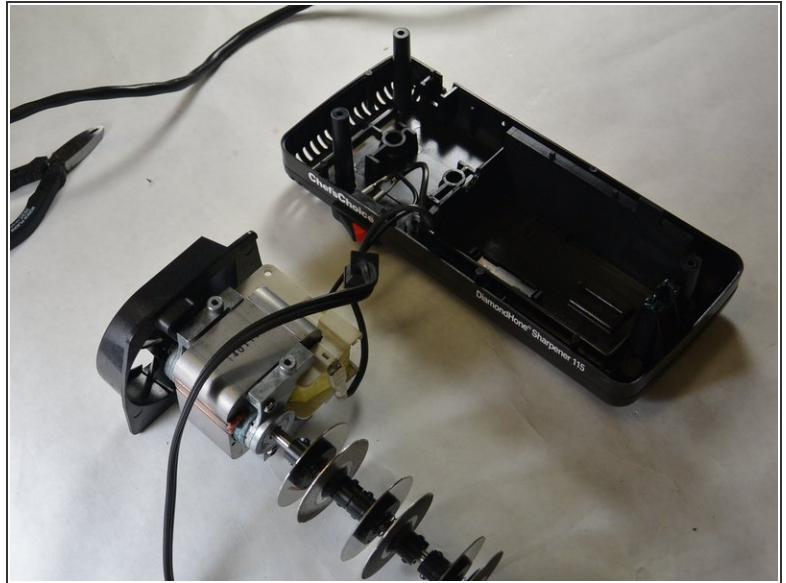
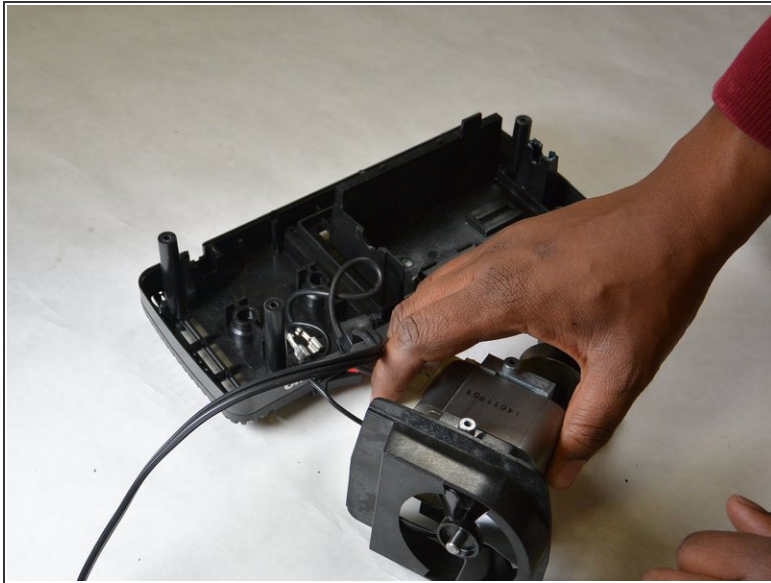
- Carefully flip the device right-side-up while grasping the top and bottom pieces.
- ⓘ The white cover should lift off with no resistance. If it does not, ensure all screws were removed in previous step.

Step 4



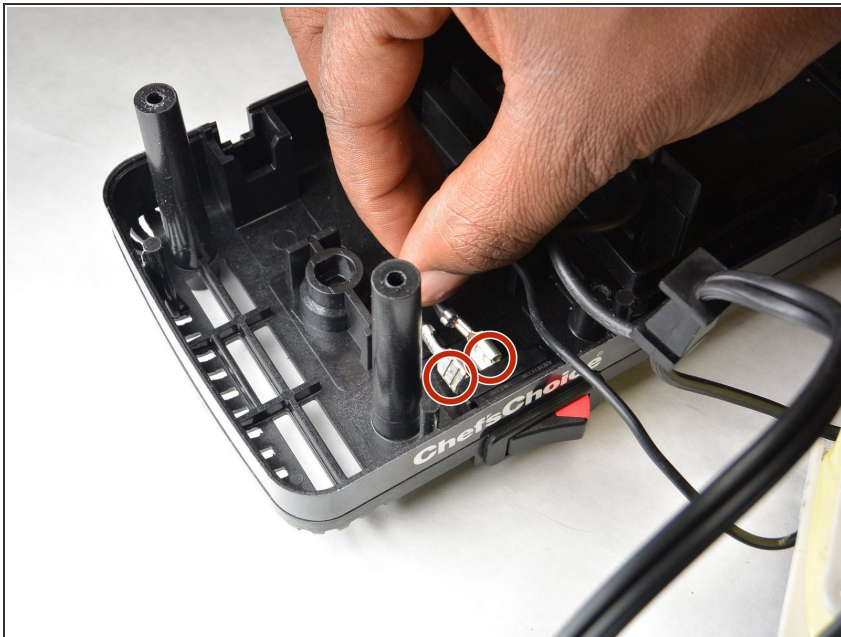
- Remove the sharpener guard by gently pulling up on it.
- ⓘ If the sharpener guard does not come off easily, ensure all screws were removed in step 1.

Step 5 — Power Cord



- Carefully lift the entire motor assembly out of the case.

Step 6



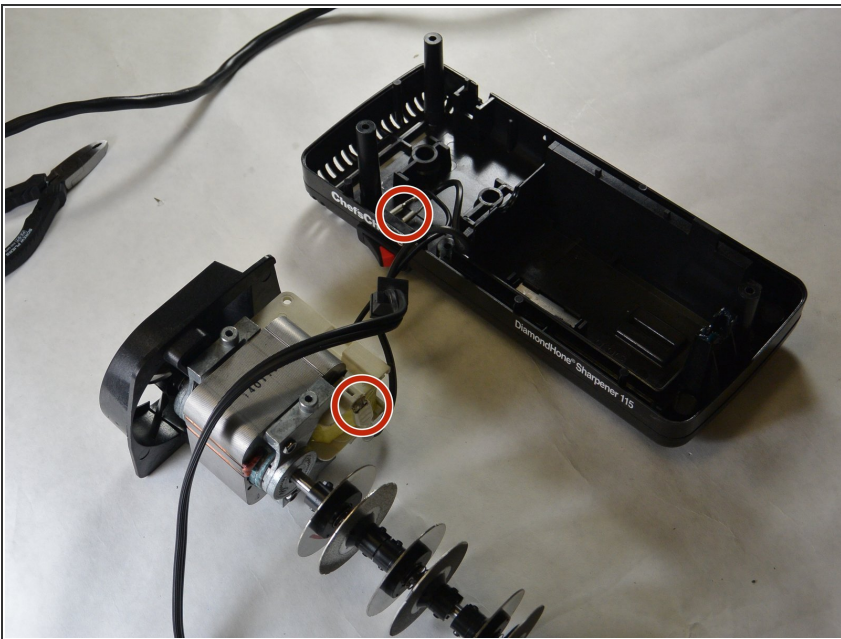
- Remove the spade connectors from the switch by pulling only on the connector, not the wire.
- ⓘ These should come off without tools, but will require a fair bit of force. Mark each wire with tape if you are unsure of the wiring layout of the device.

Step 7



- Disconnect the spade connector on the motor by pulling only on the connector, not the cord.

Step 8 — Motor Assembly



- Reconnect the wires of the new motor assembly with the power cord and reassemble the device.
- ❗ If your replacement motor assembly does not come with grinding discs or linkage pins, refer to our guides below:
 - [Grinding Discs Guide](#)
 - [Linkage Pins Guide](#)

To reassemble your device, follow these instructions in reverse order.