



Chef's Choice M115 Power Switch Replacement

This guide will instruct you on how to replace a damaged or non-functional power switch.

Written By: Hatontola malawo



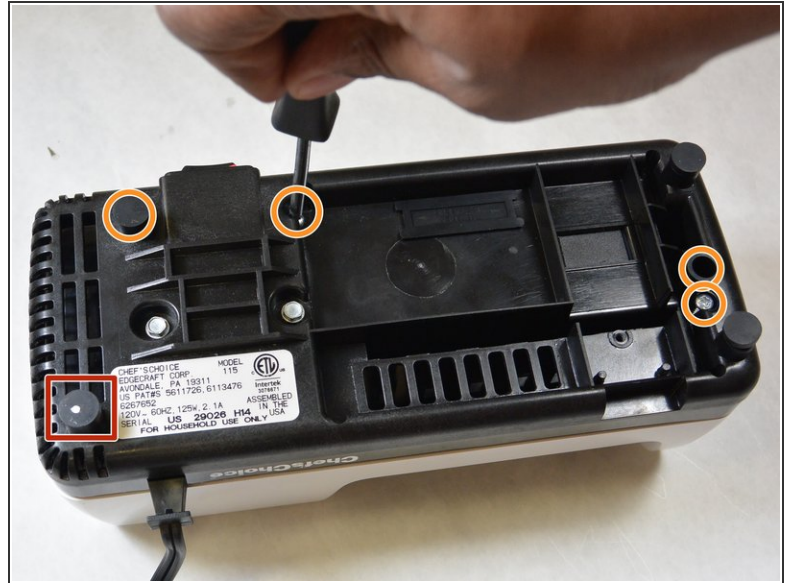
INTRODUCTION

A loose or faulty power switch should be replaced immediately. This can be a fire hazard due to an electrical short or choking hazard if it got loose and fell into the hands of an infant. This guide will show you how to prevent this from happening.

TOOLS:

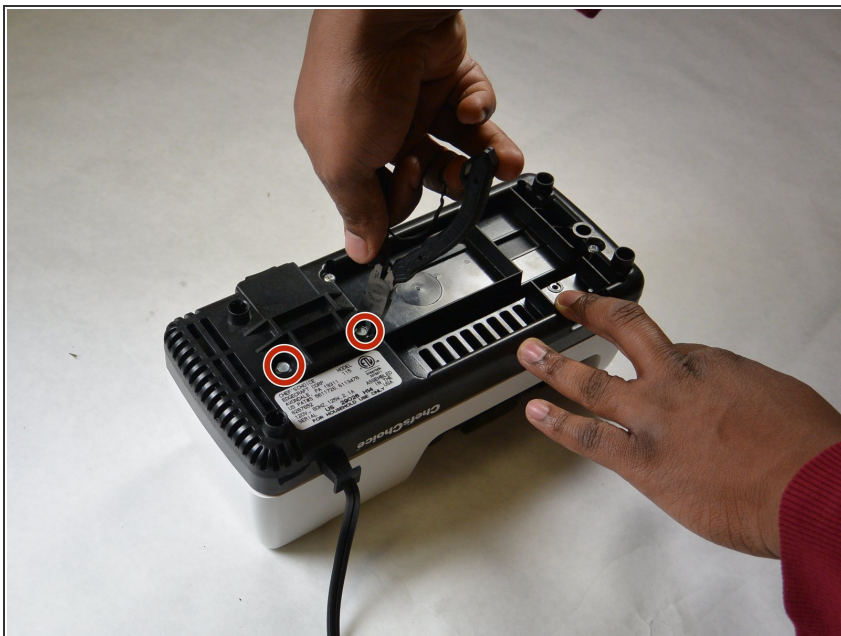
- [Slip Joint Pliers](#) (1)
 - [Phillips #2 Screwdriver](#) (1)
 - [Magnetic Project Mat](#) (1)
-

Step 1 — Case



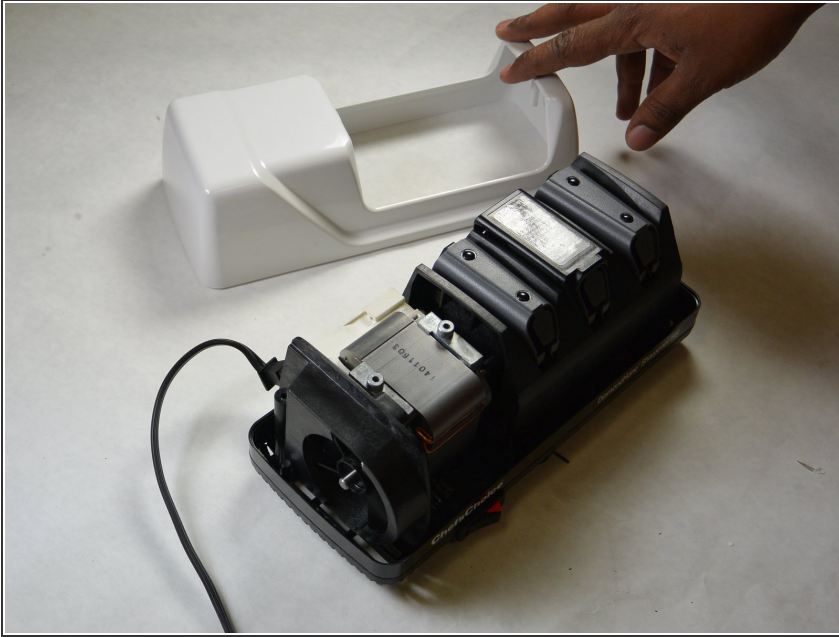
- Remove the two rubber feet on the motor side of the device.
- Remove the five Phillips screws from the bottom of the case.
- ⓘ These screws are recessed deep in the device, so a long, thin screwdriver is required.

Step 2



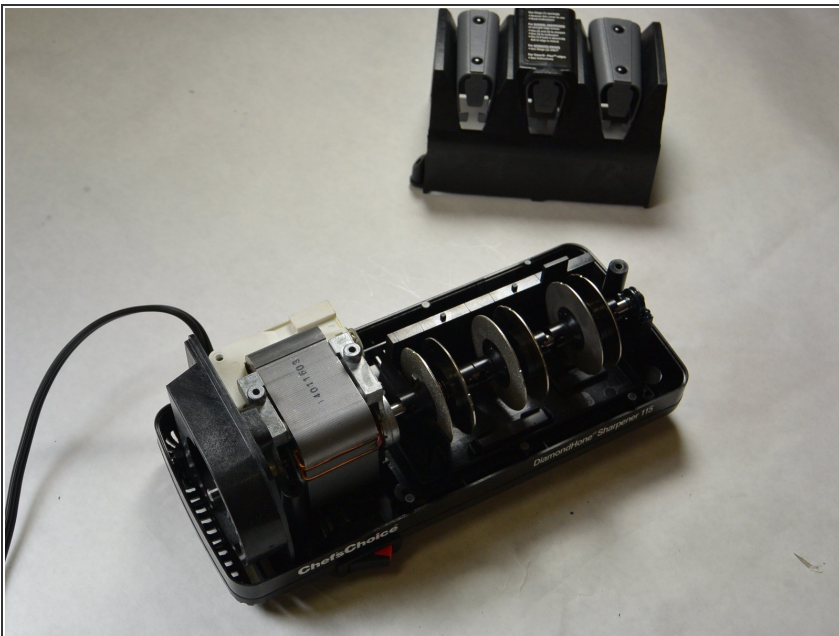
- Remove the two hex-cap screws on the bottom using a pair of pliers.

Step 3



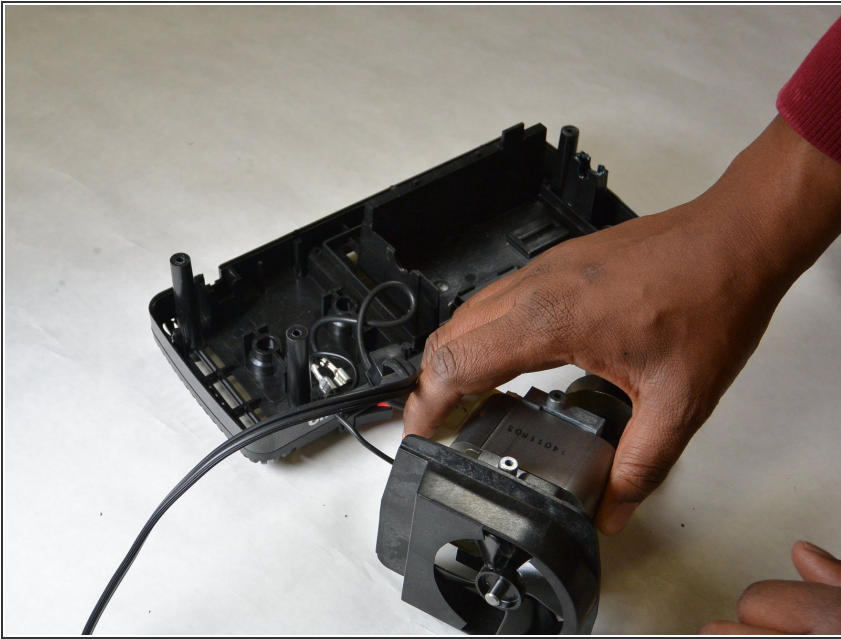
- Carefully flip the device right-side-up while grasping the top and bottom pieces.
- ⓘ The white cover should lift off with no resistance. If it does not, ensure all screws were removed in previous step.

Step 4



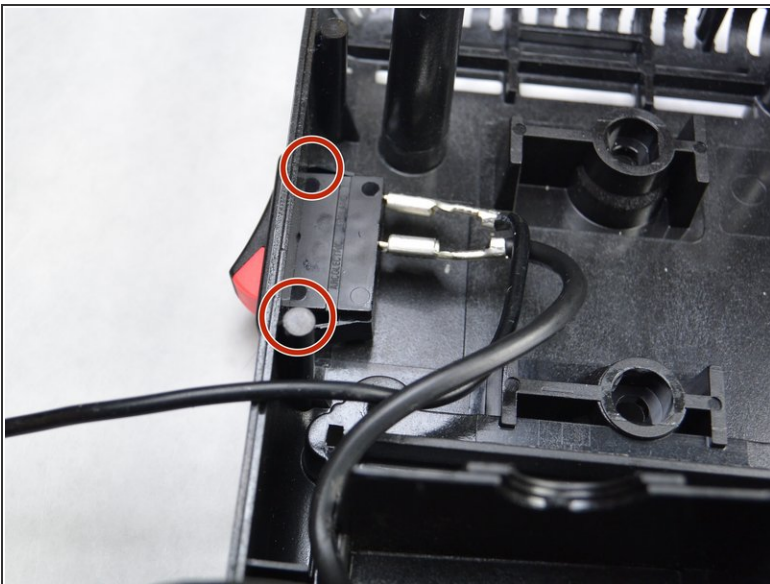
- Remove the sharpener guard by gently pulling up on it.
- ⓘ If the sharpener guard does not come off easily, ensure all screws were removed in step 1.

Step 5 — Power Switch



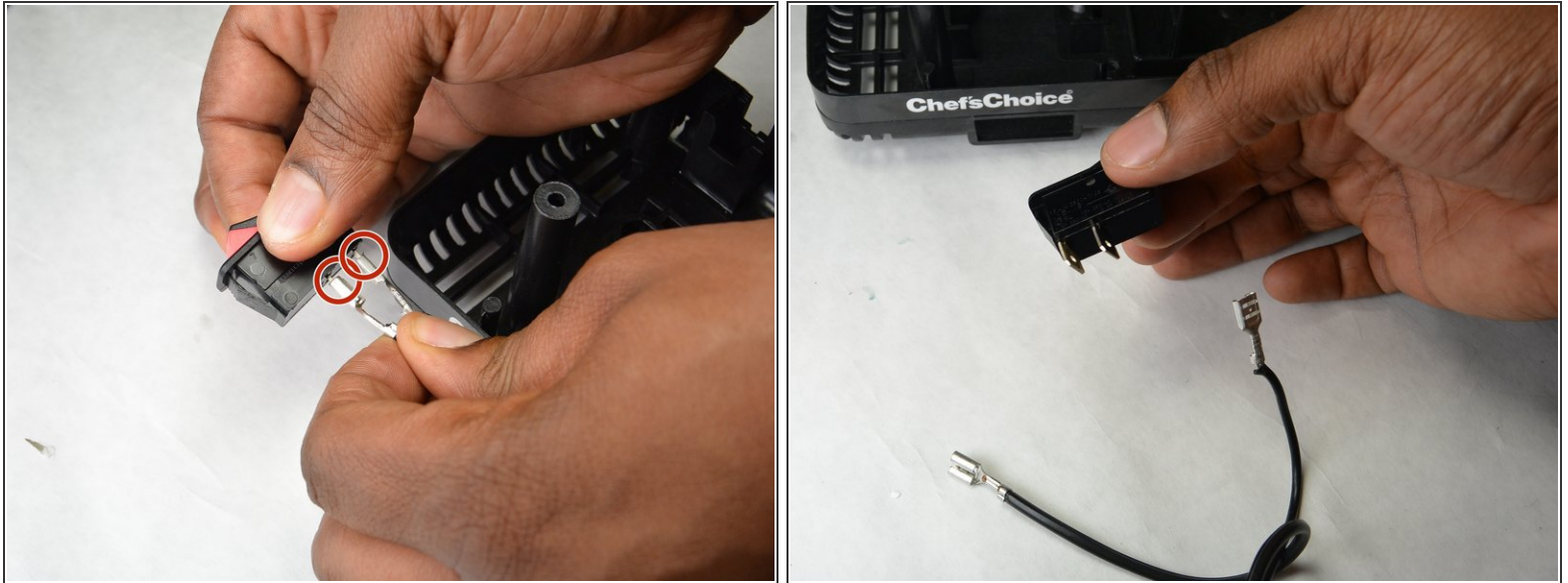
- Carefully lift the entire motor assembly out of the case.

Step 6



- Using a screw driver, unclip the edges of the switch by pushing them inwards and nudging the switch out of the plastic casing. You will hear a click when the edges unhook from the casing.

Step 7



- Remove the spade connectors from the switch by pulling only on the connector, not the wire.

⚠ This may require a fair bit of force. Use caution to not damage the device, yourself, or your surroundings.

To reassemble your device, follow these instructions in reverse order.