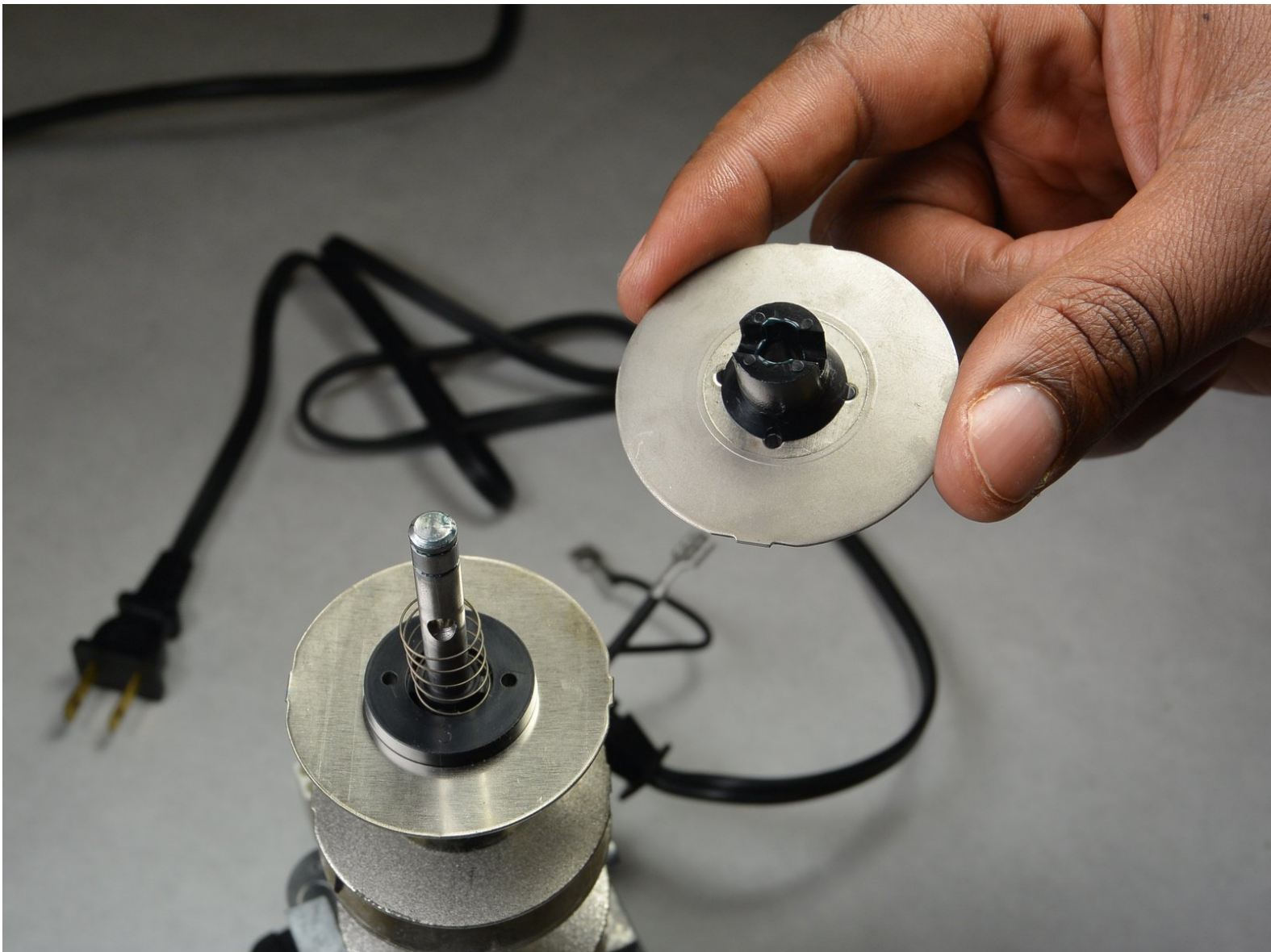




Chef's Choice M115 Sharpening Stones Replacement

This guide will assist in the teardown and replacement of sharpening stones. There are six total stones; however usually only one or two will need to be replaced at a time.

Written By: Zachary Nagel



INTRODUCTION

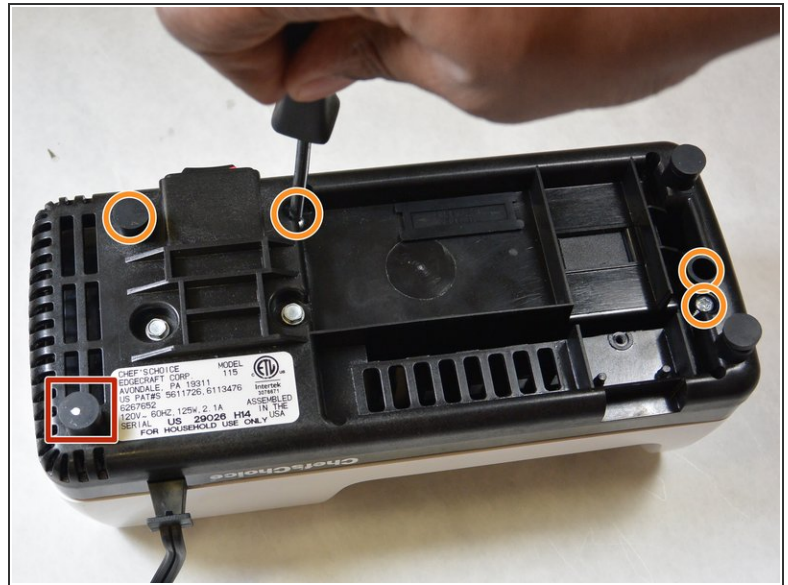
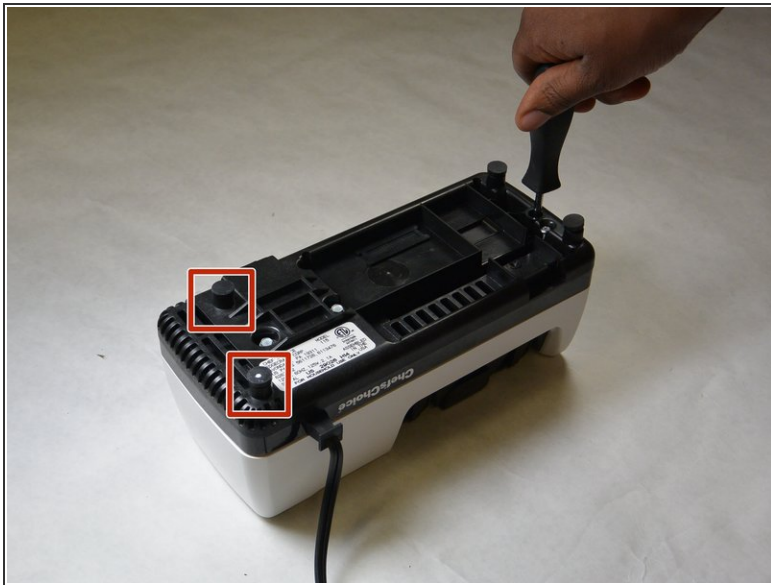
Sharpening is essentially what the chef's choice is about. This is achieved by the sharpening stones and will frequently need to be replaced. Extra caution to be taken on the removal of the c-clips as they can easily spring out and get lost.



TOOLS:

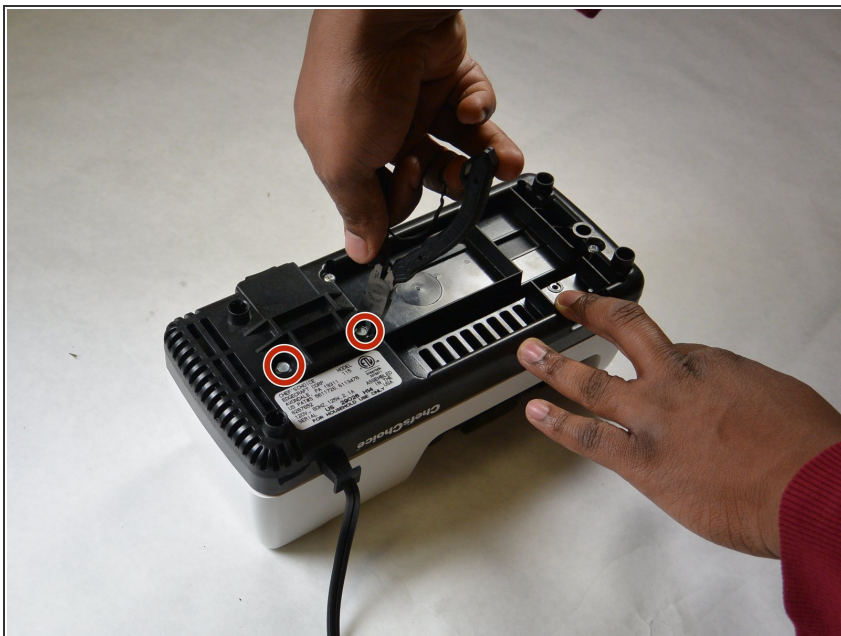
- [Slip Joint Pliers](#) (1)
 - [Phillips #2 Screwdriver](#) (1)
 - [Magnetic Project Mat](#) (1)
-

Step 1 — Case



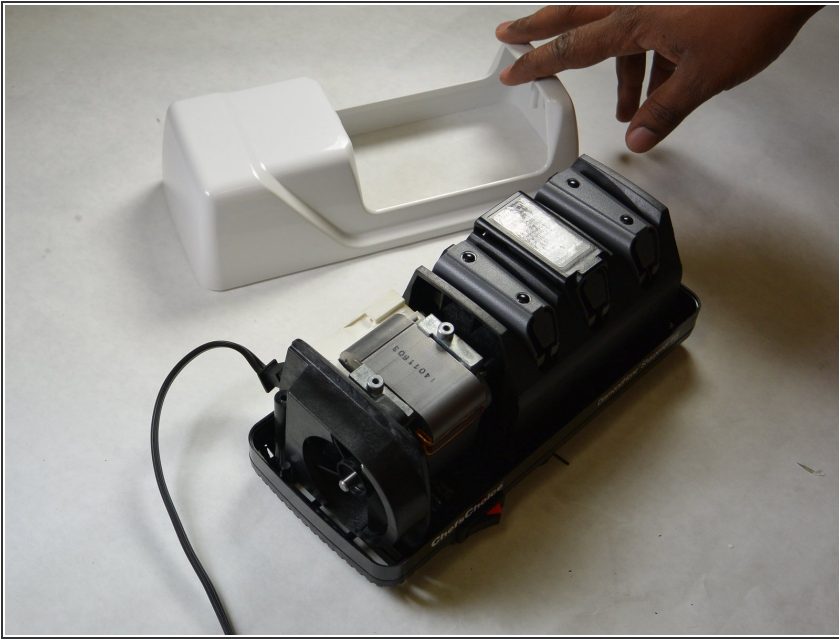
- Remove the two rubber feet on the motor side of the device.
- Remove the five Phillips screws from the bottom of the case.
- ⓘ These screws are recessed deep in the device, so a long, thin screwdriver is required.

Step 2



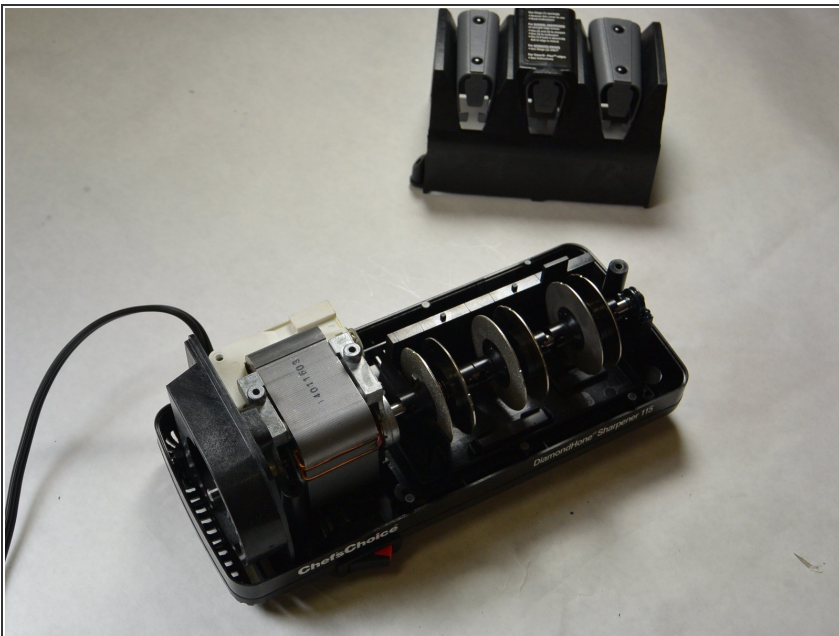
- Remove the two hex-cap screws on the bottom using a pair of pliers.

Step 3



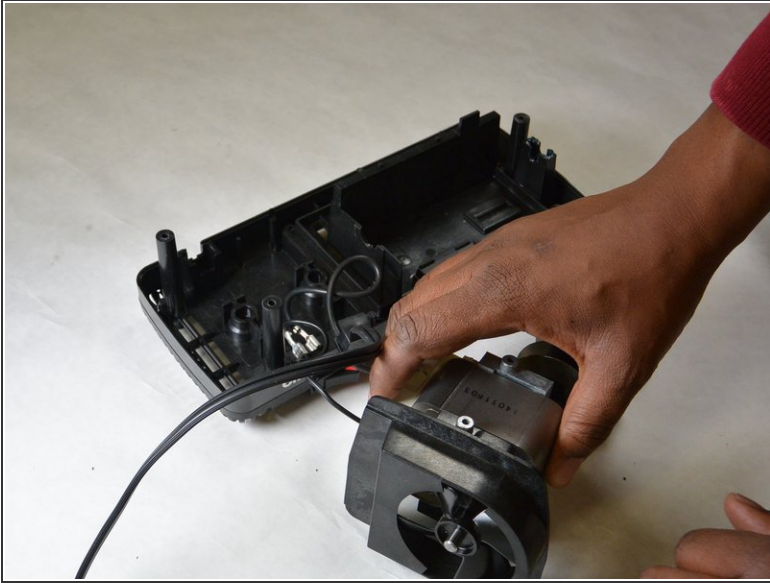
- Carefully flip the device right-side-up while grasping the top and bottom pieces.
- ⓘ The white cover should lift off with no resistance. If it does not, ensure all screws were removed in previous step.

Step 4



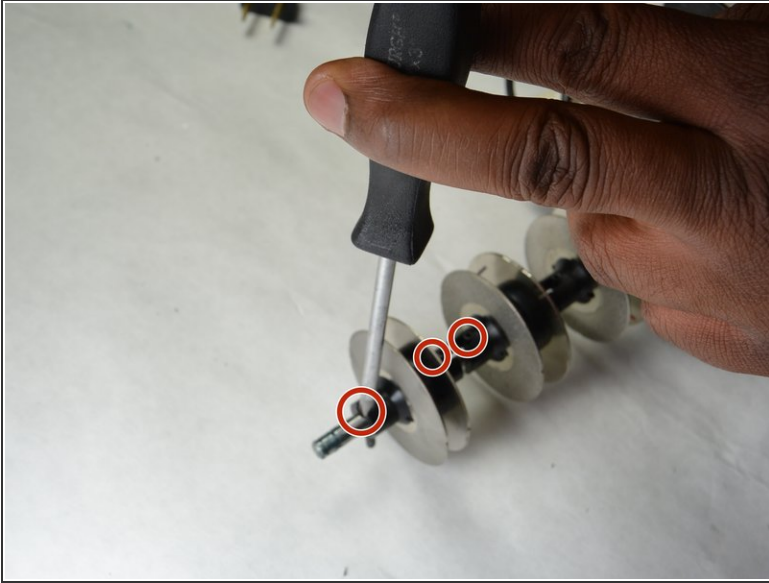
- Remove the sharpener guard by gently pulling up on it.
- ⓘ If the sharpener guard does not come off easily, ensure all screws were removed in step 1.

Step 5 — Sharpening Stones



- With the outer case removed, firmly grasp the motor-axle attachment and remove it from the base. It should come right off of the assembly.

Step 6



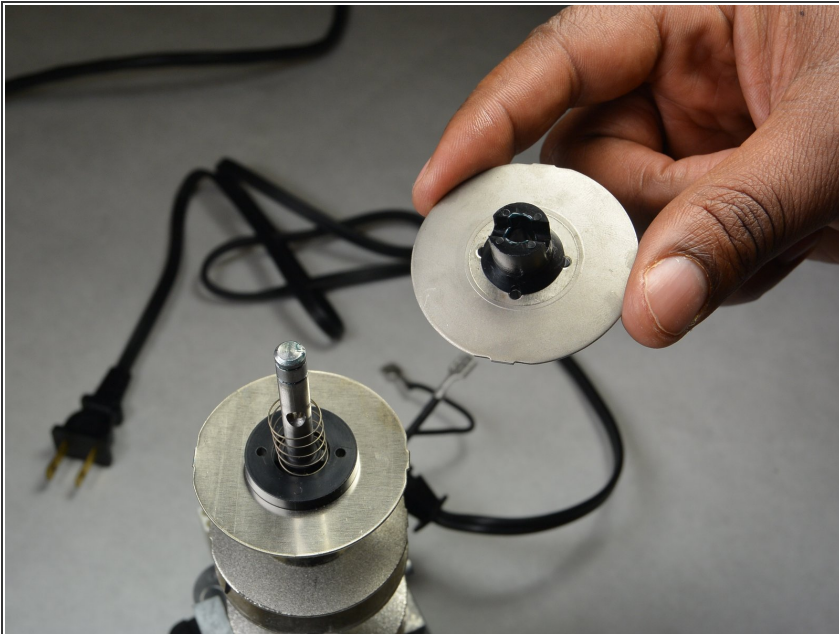
- Use a screwdriver to push the linkage pins out of the rod.
- Use pliers to pull the pins the rest of the way out.
- ⓘ Remove all the linkage pins necessary to slide desired sharpening stone off the end of the shaft.

Step 7



- ⓘ On the rotating apparatus, holding the sharpening stones in place, are two C-clamps that grip the axle.
- Remove the C-clamps by applying pressure to both sides of the "C" and pushing the clamp over and off of the axle.
- Pull the bearing off the shaft. It is in between the two C-clamps.
- ⓘ These clamps are very small; use caution to avoid dropping them on the ground or losing them.

Step 8



- Pull sharpening stones off the end of the shaft.
- ⓘ Be sure to remember the order and placement of each individual stone so you can reassemble them in the same order.

To reassemble your device, follow these instructions in reverse order.