



# Chefman RJ38-V2-35 Power Cord Replacement

How to replace the power cord of Chefman RJ38-V2-35 to restore power.

Written By: An L Duong



## INTRODUCTION

If the air fryer is not turning on after plugging into the power outlet, you've come to the right place. This guide will work you through how to replace your air fryer's power cord. It's simple, yet easy and you do not need any special tools.

---

### TOOLS:

- [Phillips #1 Screwdriver](#) (1)
  - [Utility Scissors](#) (1)
-

## Step 1 — Power Cord



- Please be sure that the device is unplugged and remove the frying basket from the device.
- Check the power cord for frays or cracks

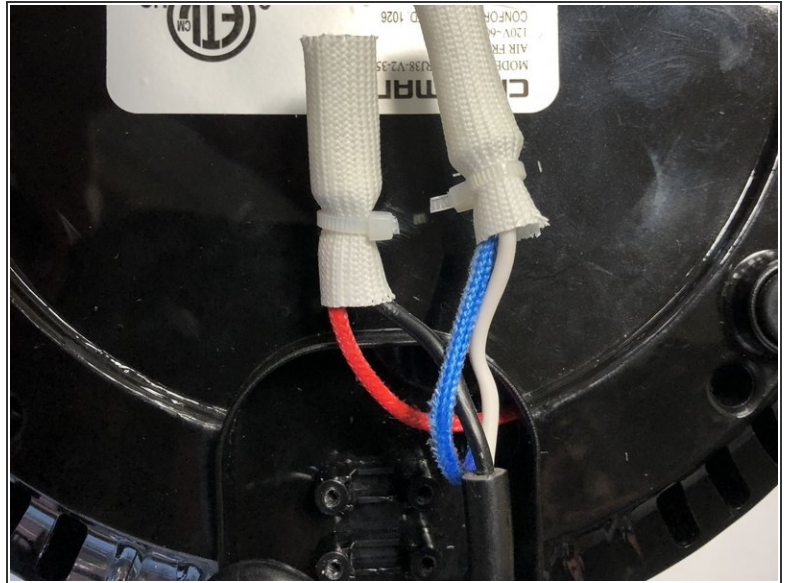
## Step 2



- If the cord appears to be fine, orient your device upside down so that the temperature knob is on the bottom and the power cord area is facing you.
- Place your hand firmly on the device to prevent slippage.
- Using the Phillips #1 screwdriver, remove the two 4 mm screws found at each corner of the bottom panel.

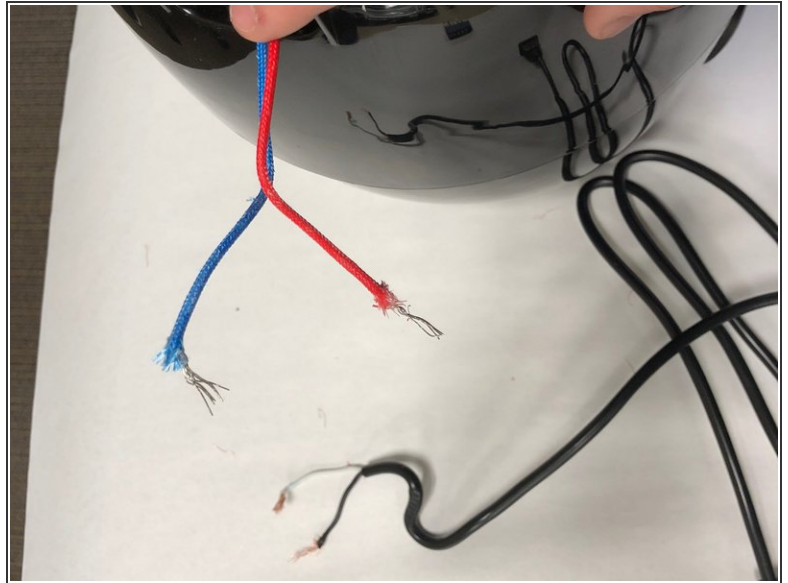
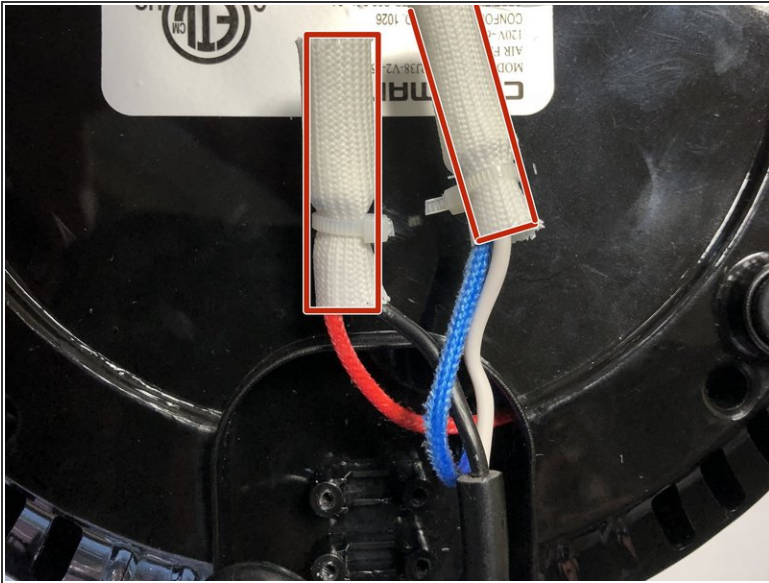


### Step 3



- After removing the two screws on the bottom, remove the four 6mm screws located on the white tabs that are securing the power cord.
- Once the white tabs come off, the power cord will be more visible, the white wire is connected with the blue wire, while the black wire is connected with the red wire.

## Step 4



- Use a pair of scissors, cut off any secure wire attachments, such as the white capsule.
- The wire will come apart and you can now separate the power cord from the device's wires.
- The red and blue wires of the device will show its aluminum strips, this is what connects to the replacement wire.

To reassemble your device, follow these instructions in reverse order.