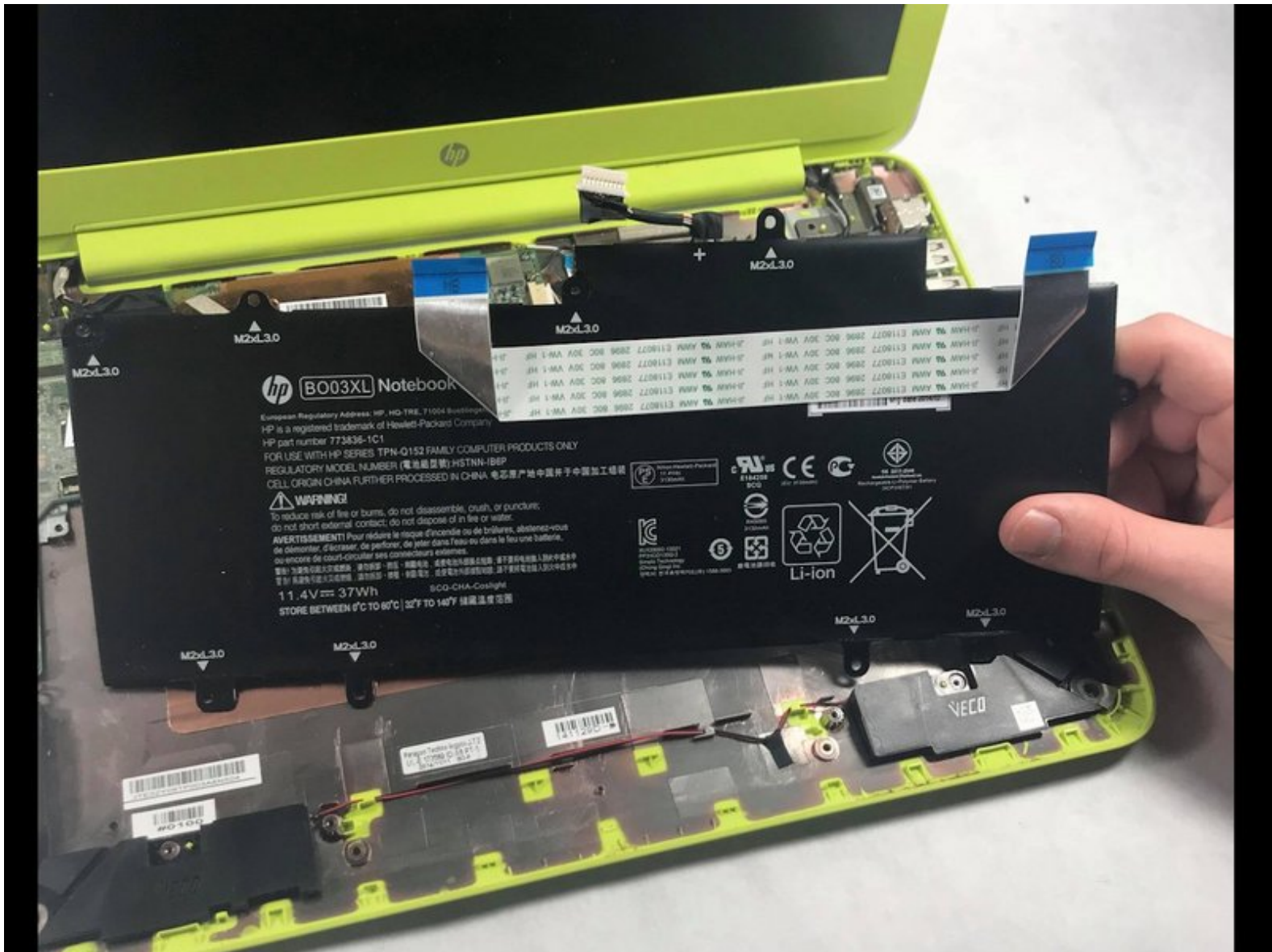




Chromebook 14-x015wm Battery Replacement

Here, I will be demonstrating how to properly open up the Chromebook and replace the battery.

Written By: Cameron Sinclair



INTRODUCTION

You are able to disassemble your laptop and, as a last result, purchase a new one, through a variety of different sellers. One of the most popular would be Amazon or HP themselves. The battery is an integrated 59Wh battery and it's expected use time. 5 hours



TOOLS:

- [Pro Tech Toolkit](#) (1)
-

Step 1 — Battery



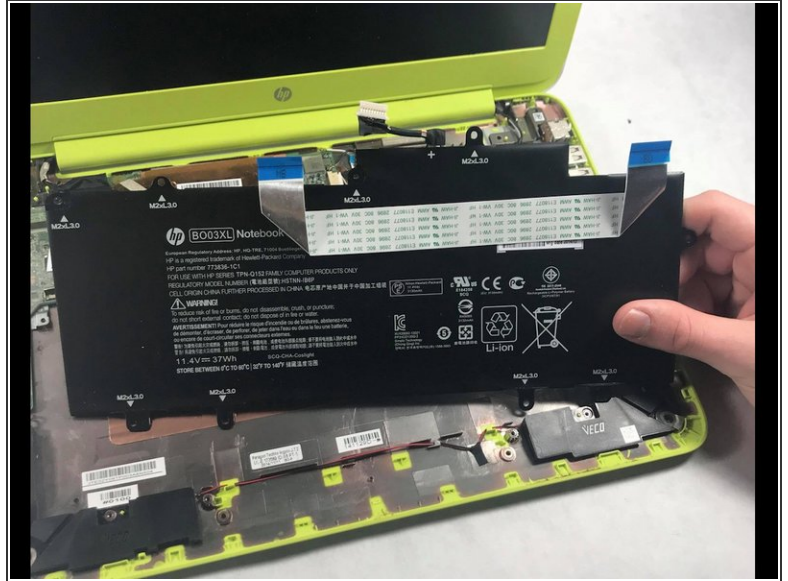
- Turn the Chromebook upside down so that the bottom is facing upwards. Make sure to remove the small rubber circles and all four corners, and additional three other small rubber covers and proceed to unscrew the screws.

Step 2



- Flip the laptop back over and open it so that the keyboard is revealed to you.
 - Use a plastic opening tool to pry off the keyboard. It's slightly difficult to get off, but evenly go around all four sides until it pops out.
- ⚠ Be careful of the ribbons underneath that connect the keyboard to the internal components.

Step 3



- The long, flat, black component that takes up the majority of the space is the battery. Surprise! There are more screws (make sure you keep track of what screws came from where). All you are required to do is unscrew these and then gently remove the battery from the Chromebook.

To reassemble your device, follow these instructions in reverse order.