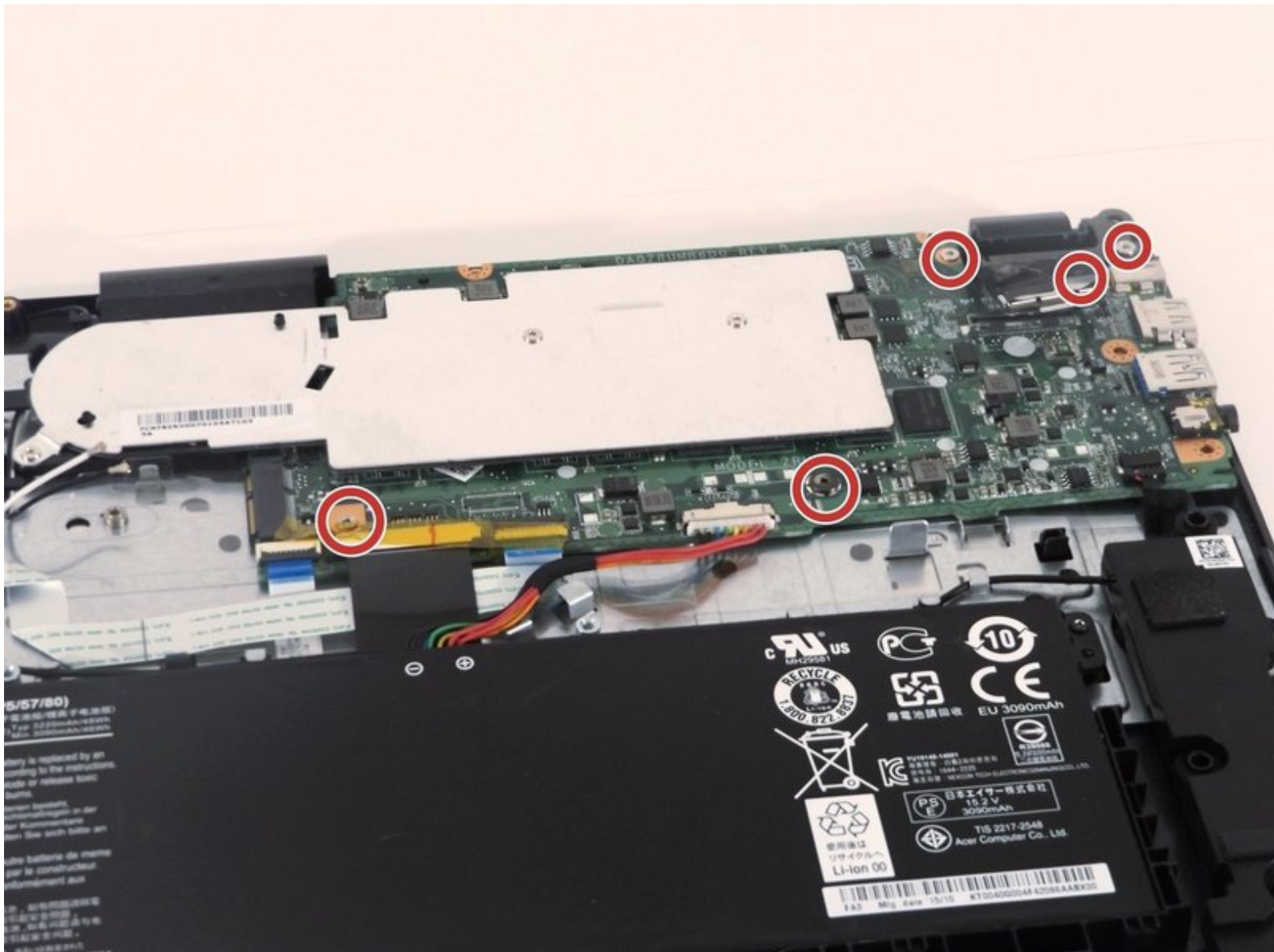




Chromebook 15 CB3-531-C4A5 Motherboard Replacement

This guide explains how to replace the motherboard in a Chromebook 15 CB3-531-C4A5.

Written By: Savannah Vining



INTRODUCTION

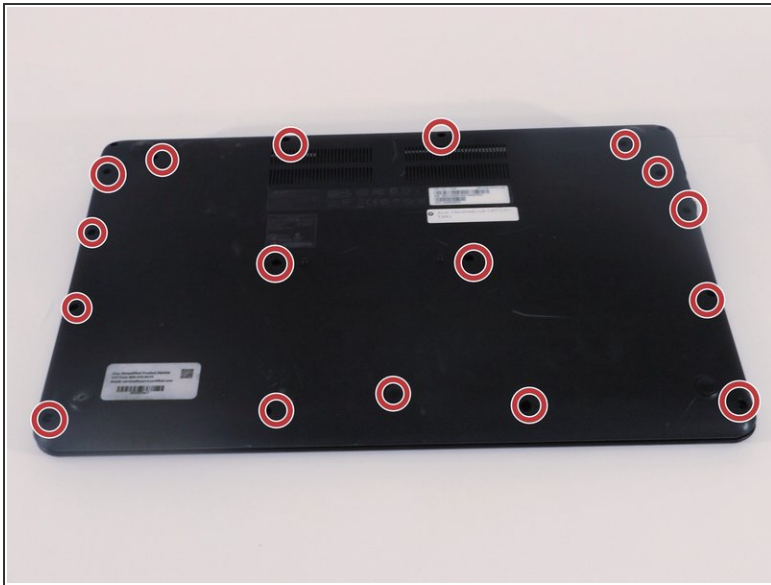
You will need to replace the motherboard of the computer if it is unresponsive.



TOOLS:

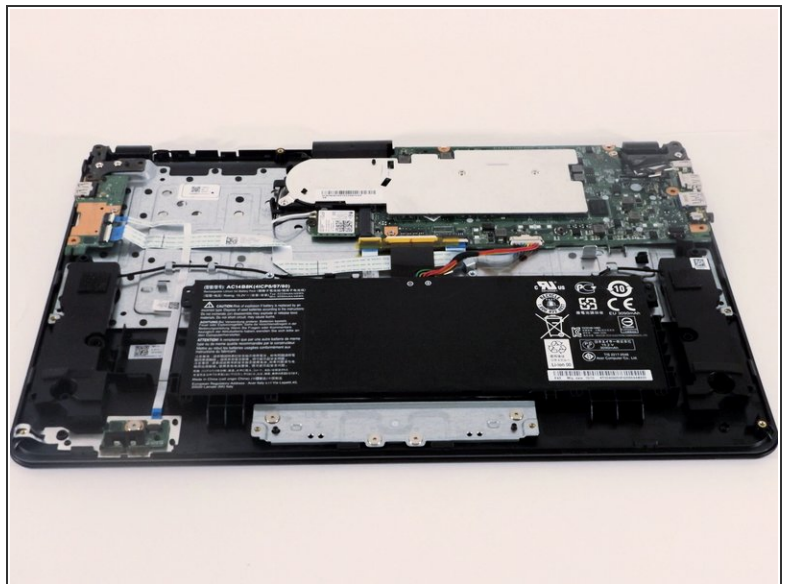
- [64 Bit Driver Kit](#) (1)
 - [Phillips #0 Screwdriver](#) (1)
 - [Spudger](#) (1)
-

Step 1 — Case



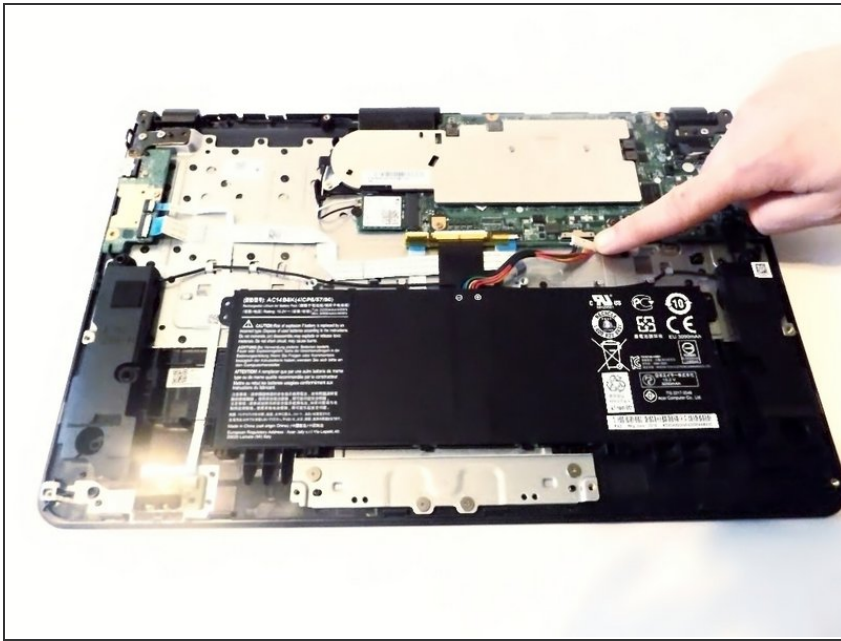
- Remove the 18 Phillips screws using a screwdriver with a PH0 bit.

Step 2



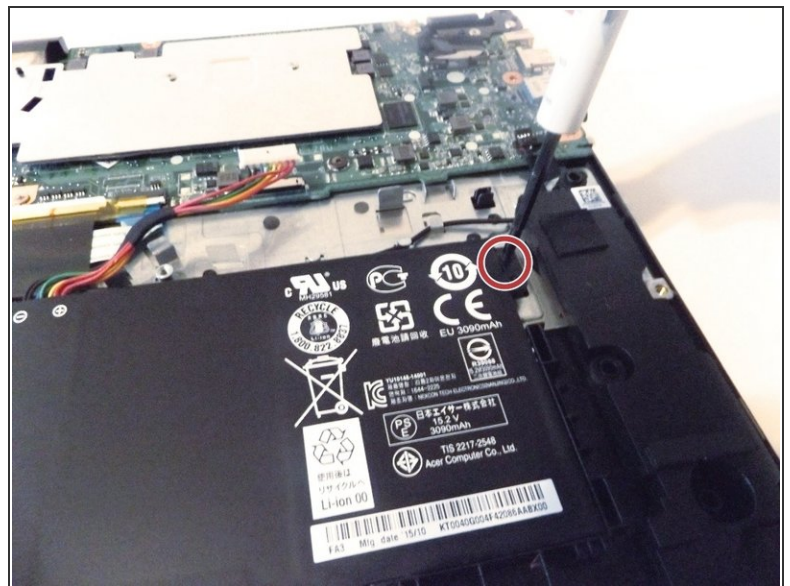
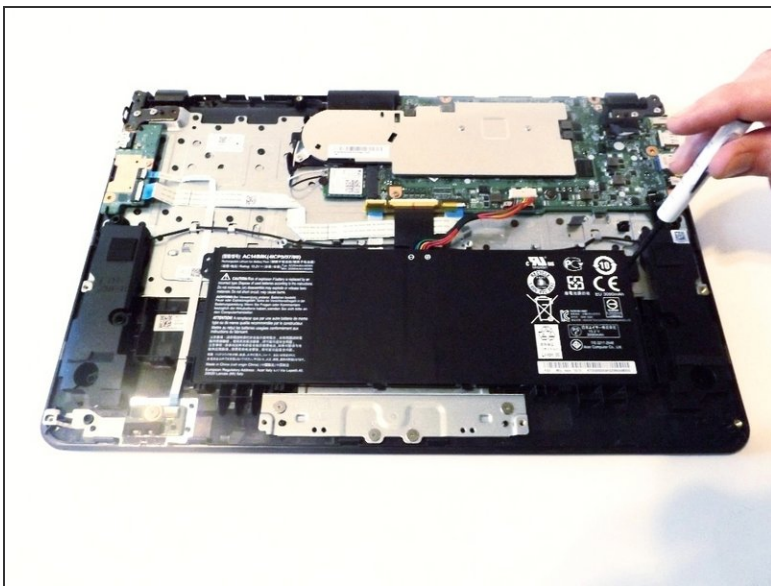
- Using a spudger, gently pry open the back from the top.

Step 3 — Battery



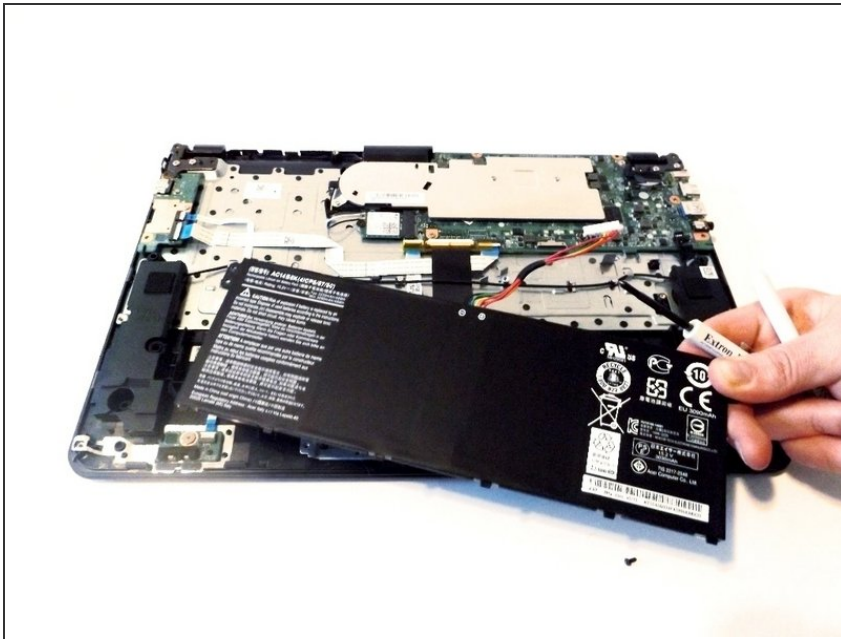
- Once it is opened up, locate the battery and the cable that is attached to it.

Step 4



- Next, unscrew the battery pack. The one screw should be located on the far right of it. This will ensure that the battery comes out easily and affectively.

Step 5



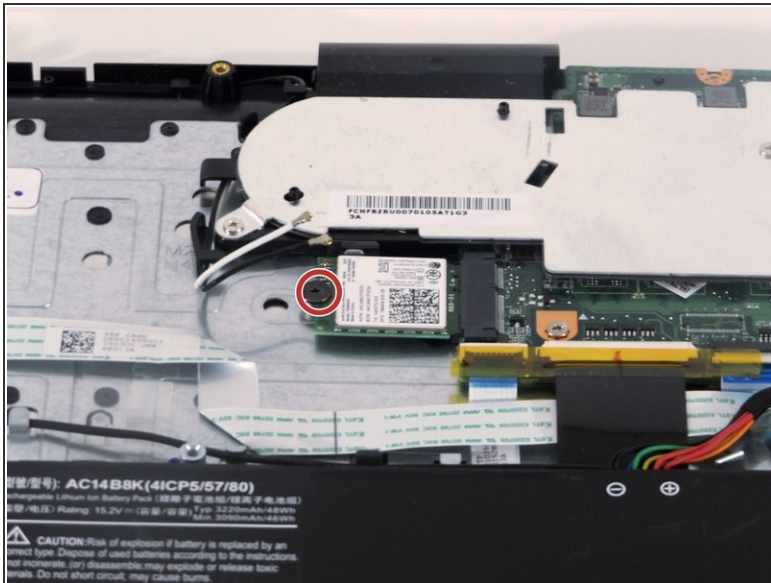
- Take the battery out easily for replacement.

Step 6 — Wireless Card



- Remove the two antenna cables that attach the wireless card to the motherboard. One will be black and the other will be white.

Step 7



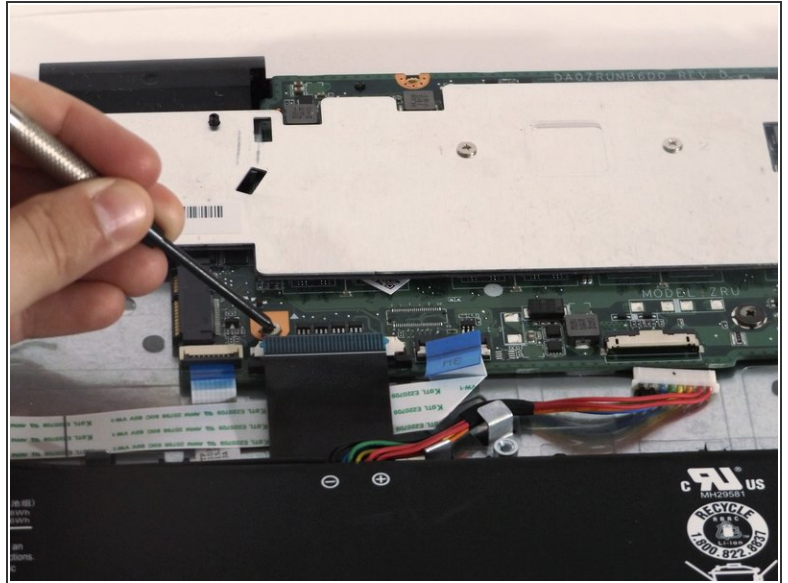
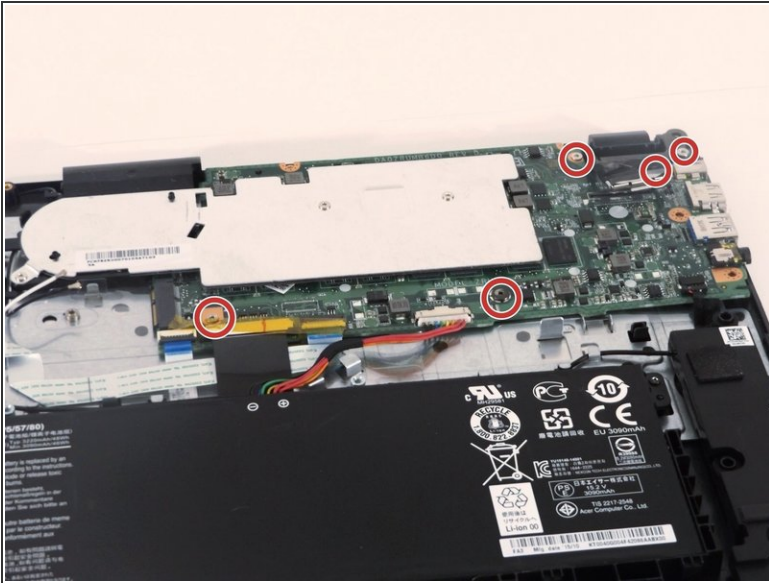
- Locate the screw that holds the wireless card in place and then remove it using a screwdriver with a PH0 bit.

Step 8



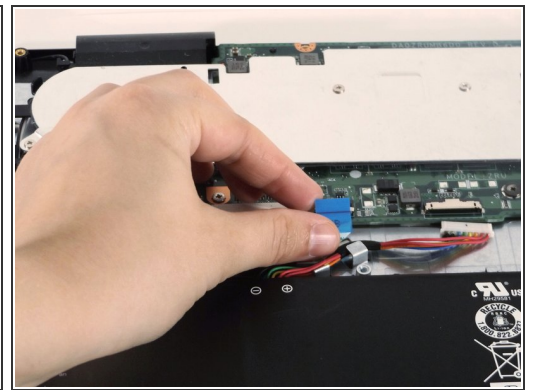
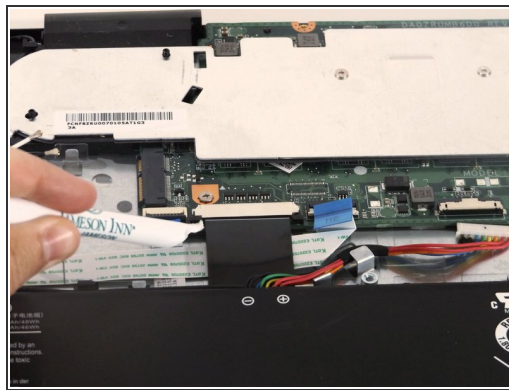
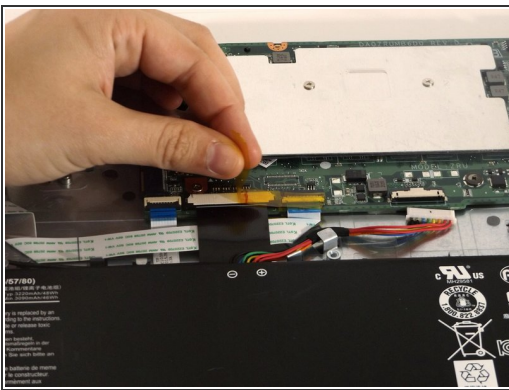
- Slide the Wireless card out gently with two fingers while being careful not to damage any surrounding parts.

Step 9 — Motherboard



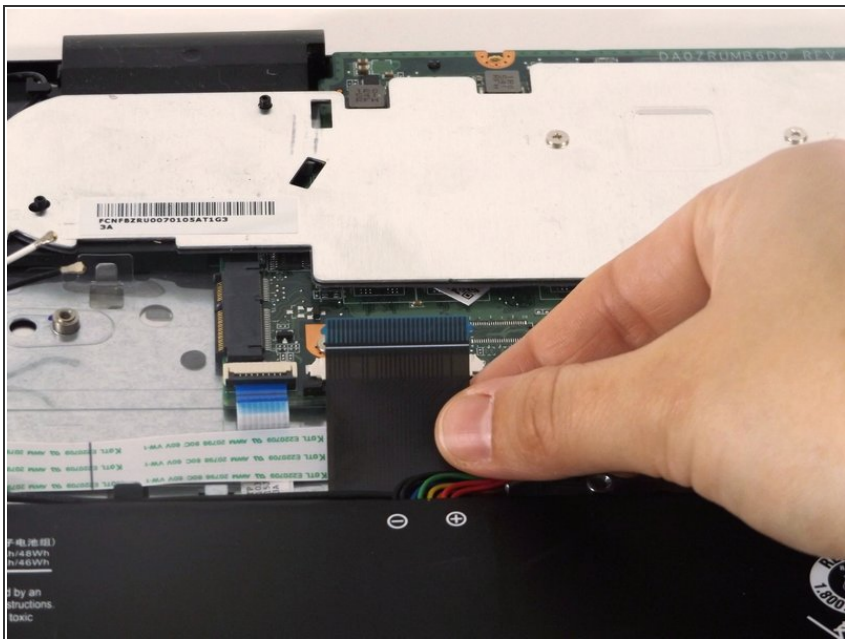
- Remove the four Phillips screws.

Step 10



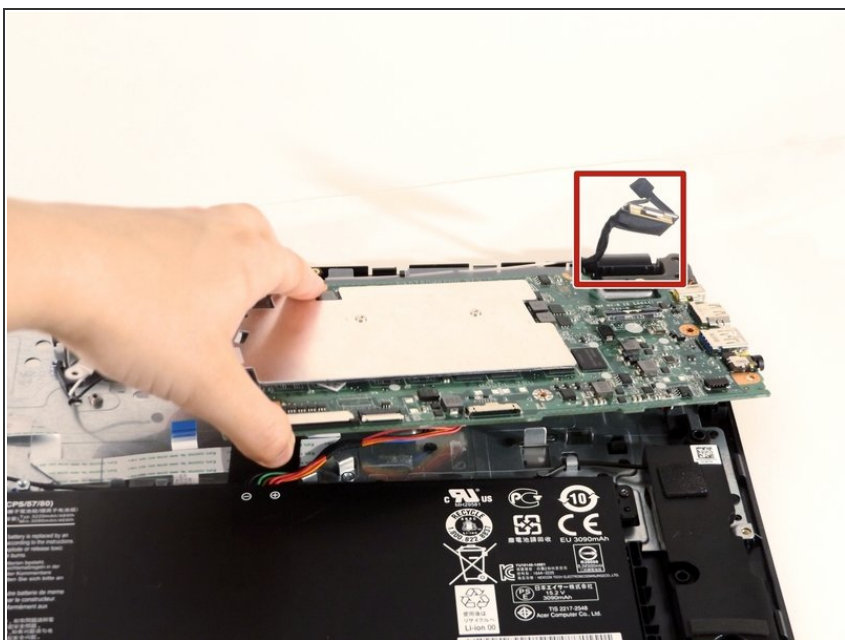
- Remove tape that secures the ribbon cables.
- Using the spudger, lift the latches to unlock each ribbon cable.
- Remove the cables.

Step 11



- Remove the large black cable between the two ribbon cables.

Step 12



- Remove the remaining cable.
- Remove the motherboard.

To reassemble your device, follow these instructions in reverse order.