



# Chromebook 15 CB3-531-C4A5 Wireless Card Replacement

This guide will elaborate on how to replace a wireless card in a Chromebook 15 CB3-531-C4A5.

Written By: Savannah Vining



## INTRODUCTION

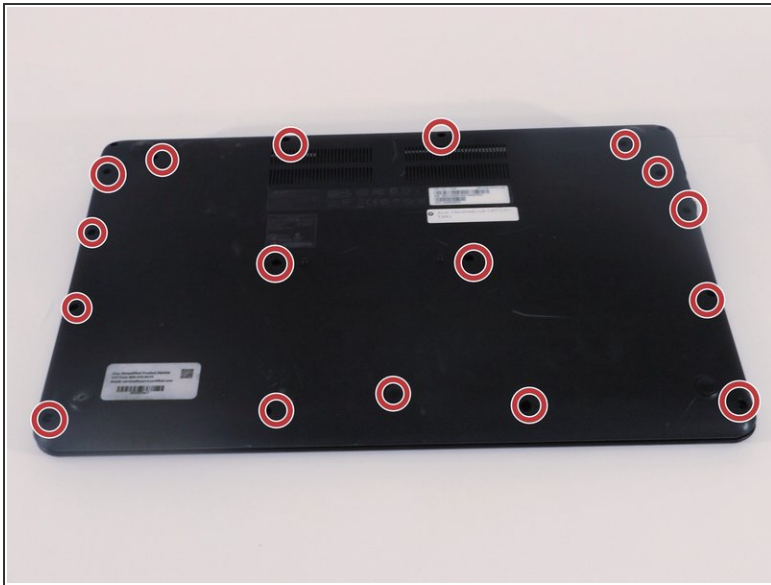
You may need to replace the wireless card if it is faulty or does not display wireless settings. It will require taking the back of the computer off and replace the wireless card internally. There are no hazards accompanied with this task as long as the Chromebook is not charging.



### TOOLS:

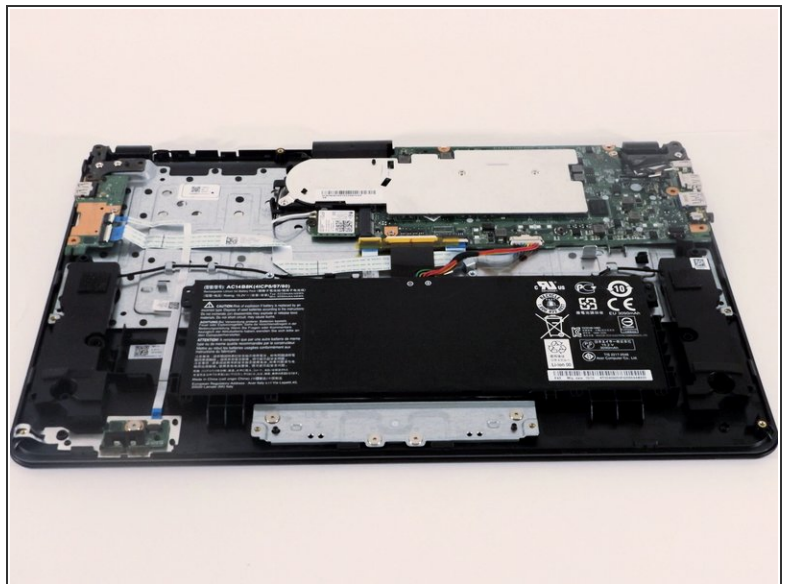
- [Spudger](#) (1)
  - [Phillips #0 Screwdriver](#) (1)
-

## Step 1 — Case



- Remove the 18 Phillips screws using a screwdriver with a PH0 bit.

## Step 2



- Using a spudger, gently pry open the back from the top.



## Step 3 — Wireless Card



- Remove the two antenna cables that attach the wireless card to the motherboard. One will be black and the other will be white.

## Step 4



- Locate the screw that holds the wireless card in place and then remove it using a screwdriver with a PH0 bit.

## Step 5



- Slide the Wireless card out gently with two fingers while being careful not to damage any surrounding parts.

To reassemble your device, follow these instructions in reverse order.